

7000 SF (aprox) Market Price

Position your business in the heart of Lakeland's active commercial corridor. This versatile $\pm 7,000$ SF property offers exceptional visibility and accessibility, ideal for a wide range of professional, retail, or service-based uses.



This strategic location places your business in one of Lakeland's most established commercial zones, offering visibility, convenience, and growth potential.

2015-2025 CRYSTAL WOOD DR.

Lakeland, FL 33801



MARKET VALUE



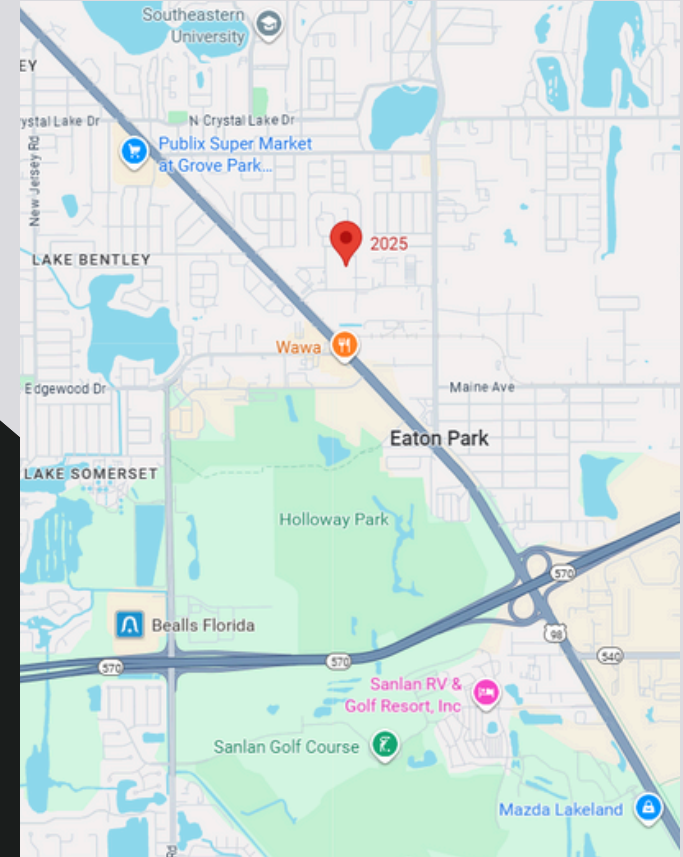
Property Highlights:

- Spacious ±7,000 SF layout suitable for multiple business types
- Excellent street visibility and easy access
- Ample parking to support high customer traffic
- Flexible configuration to accommodate your business needs

Location Advantages:

Situated just off E. Memorial Blvd and US-92, this location is surrounded by consistent commercial activity and strong traffic flow. Nearby businesses include national retailers, local service providers, restaurants, and industrial operations—creating a steady customer base and strong daytime population. Minutes from:

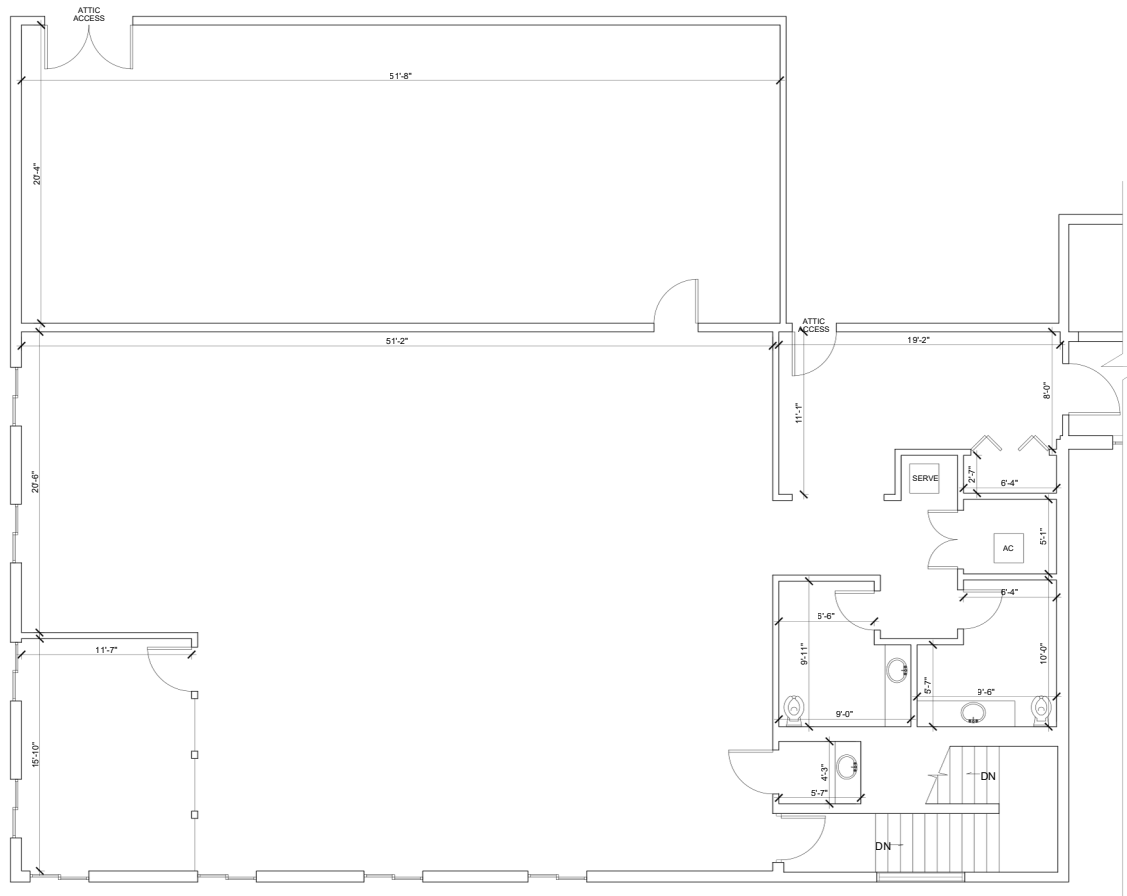
- US-92 / E Memorial Blvd – major commercial artery
- Lakeland Regional Health – strong employment hub
- Downtown Lakeland – shopping, entertainment & dining
- I-4 access – connecting Tampa & Orlando



Contact Us

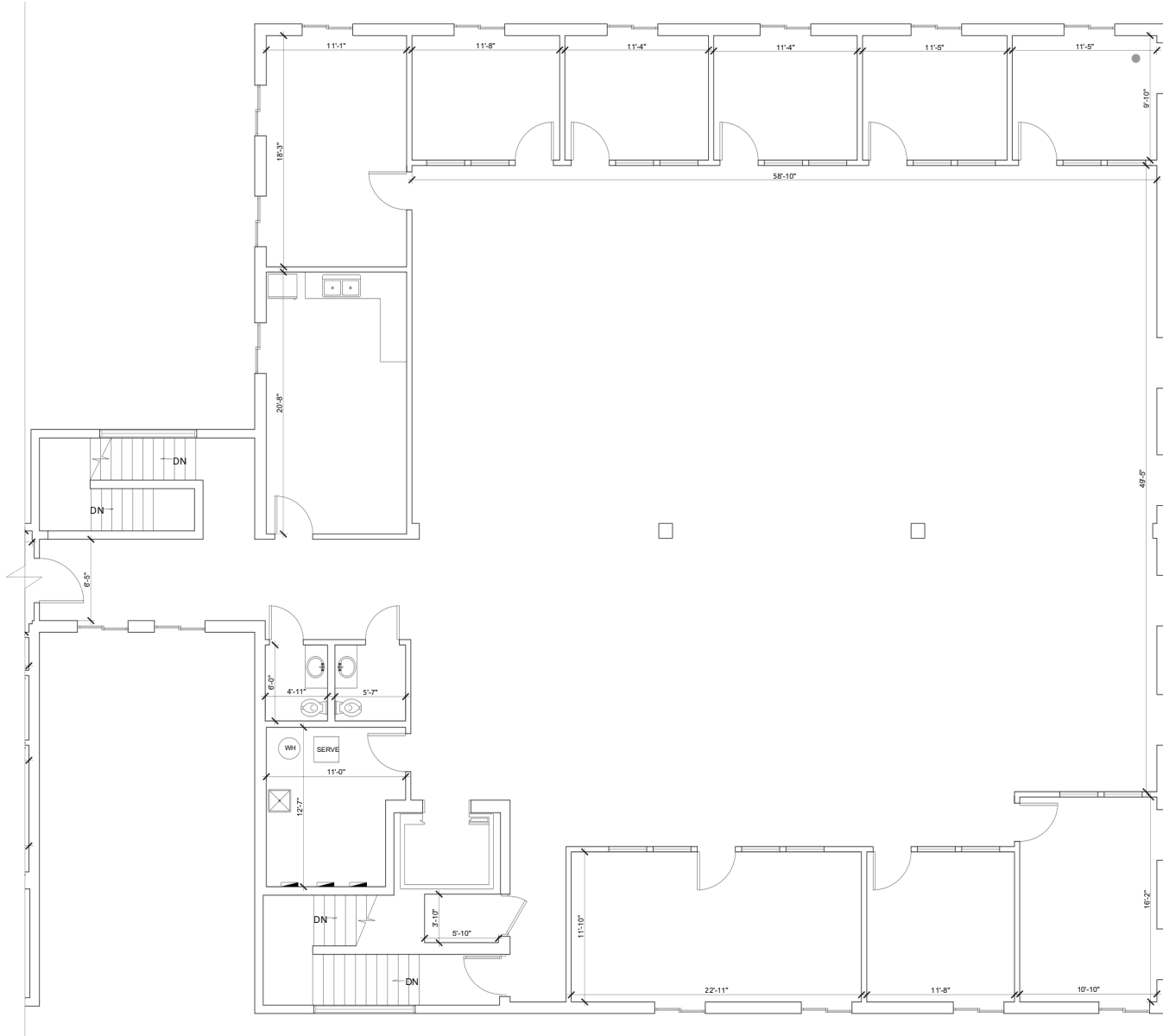
info@Lorio.com
+1 (863)-680-1628
www.lorio.com





2025 Second Floor Existing Plan
 Scale: 1/4" = 1'-0"

2025 CRYSTAL WOOD DRIVE
 LAKELAND, FLORIDA



2015 Second Floor Existing Plan
 Scale: 1/4" = 1'-0"