



# Retail that resonates



NewMark Merrill  
COMPANIES



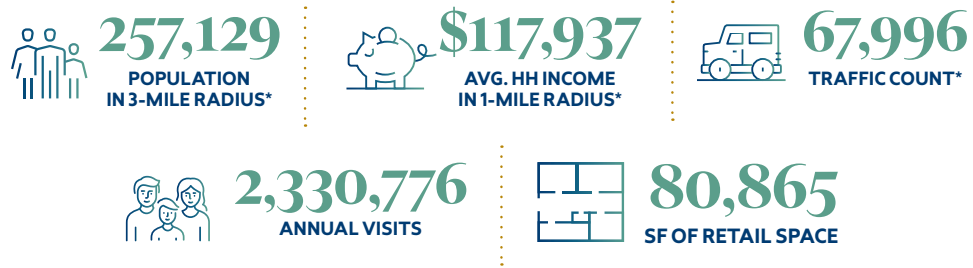
  
**Bristol  
Warner**  
VILLAGE

Located at the Southeast corner of Bristol St. & Warner Ave. • Santa Ana, CA  
[www.bristolwarnervillage.com](http://www.bristolwarnervillage.com)

# Prime Retail Space Available

at the SE corner of Bristol Ave. & Warner Ave.

Situated in the heart of Orange County's retail corridor, at the major intersections of Bristol Street and Warner Avenue in Santa Ana, Bristol Warner Village provides exposure to over 67,000 cars daily and over 257,000 people in a 3-mile radius.



\*Estimates are based on 2025 demographics for population and average income per household. The information contained herein is not guaranteed and should be independently verified.






WARNER AVE.



BRISTOL ST.



#	TENANT	SF
1200A	Taqueria Jalapeños	1,500
1200B	Boba Junkie	750
1200C	Tutti Frutti	750
1200E	Check Cashing	1,500
1200F	King Water & Juice Bar	750
2307A	Ducks Donuts	1,100
2307B	Metro PCS	3,500
2307C	Waba Grill	1,288
2311	La Villita Recycling	0
2315	Tony's Barber Shop	856
2321	Santa Buffet & Grill	8,819
2327	La Michoacana Premium	3,885
2335	Alitas Mexa Plus	644
2337A	T-Shirt Factory	5,639
2337B	La Carniceria Meat Market	2,004
2341	Dentistry 4 Kids	5,500
2343	Las Vegas Bar	2,700
2407B	IHOP	5,200
PAD1	Starbucks	2,015
PAD2	T-Mobile	1,775
99	Sprouts Farmers Market	27,285
99-A	AVAILABLE	5,500

For Leasing Information  
please contact:

Greg Giacopuzzi  
Vice President, Leasing & Development  
Tel: 818.710.6100 x5798  
ggjacopuzzi@newmarkmerrill.com

Darren Bovard  
Vice President - Leasing  
Tel: 818.710.6100 x5729  
dbovard@newmarkmerrill.com



NewMark Merrill  
COMPANIES

## When you love shopping centers, it shows.

24025 Park Sorrento, Ste. 300 • Calabasas CA 91302 • 818.710.6100 • www.newmarkmerrill.com

NOTE: This information is conceptual in nature and is subject to adjustments pending verification and Client, Tenant, and Government Agency approvals. No warranties or guaranties of any kind are given or implied by the Architect or Owner.