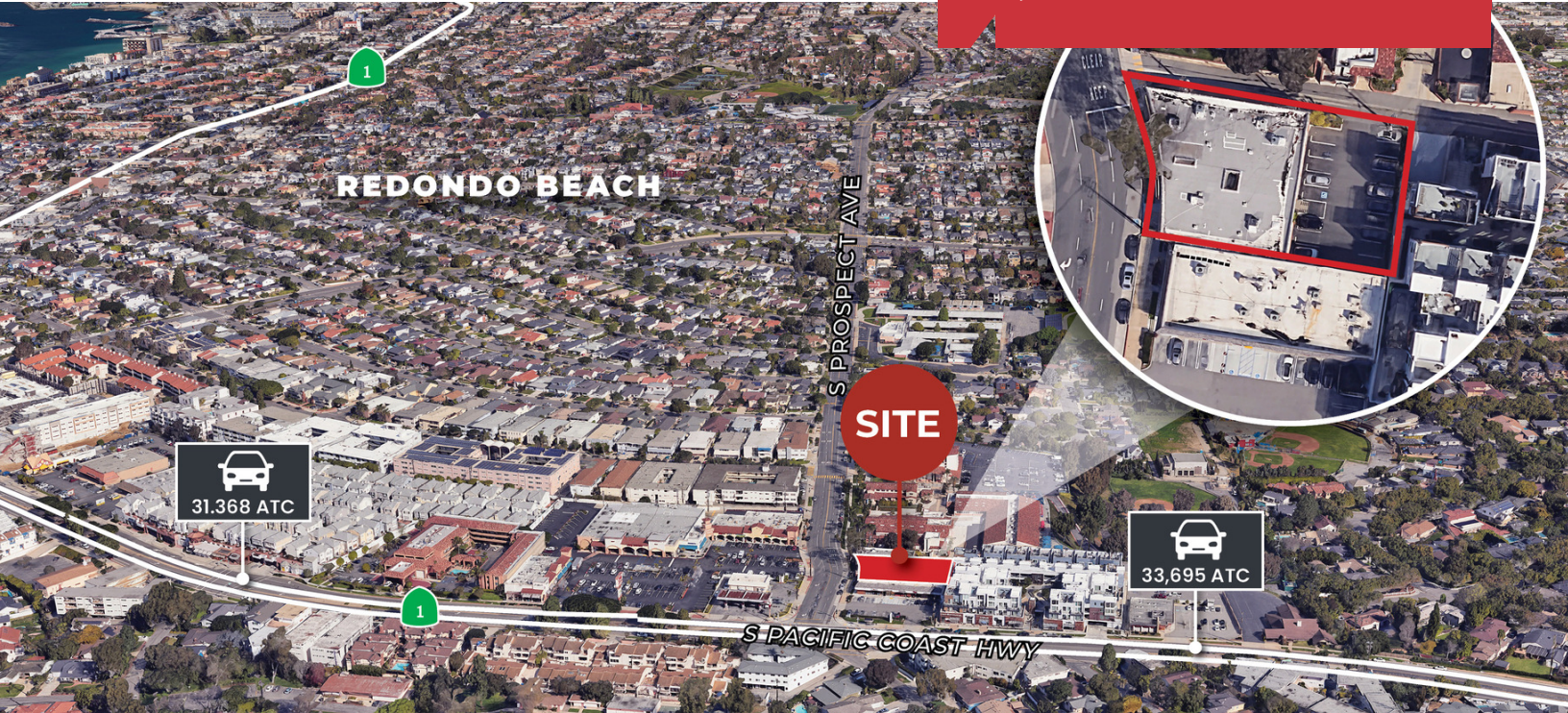


For Lease  
**Medical Office**  
1,400 SF



# 1970 S Prospect Ave

Redondo Beach, California 90277

## Lease Highlights

- 1,400 Square Foot Medical / Office Space
- Utilities Included in Rate
- Equipped with 5 Exam Rooms & sinks, Lobby, Reception, Two Restrooms
- Fresh Paint and Carpet Recently Completed
- Located on Pacific Coast Highway
- Excellent Visibility and Access from PCH and Prospect
- Located Across from Grocery Anchored Shopping Center

## Offering Summary

Available SF:	1,400 SF
Lease Rate:	\$3.50 SF/month (MG)

Demographics	0.3 Miles	0.5 Miles	1 Mile
Total Households	1,158	2,593	10,387
Total Population	2,751	6,228	24,112
Average HH Income	\$180,561	\$184,886	\$181,060

For more information

### Steve Liu

O: 949.468.2385  
sliu@naicapital.com | CalDRE #01323150

### Alex Tohidian

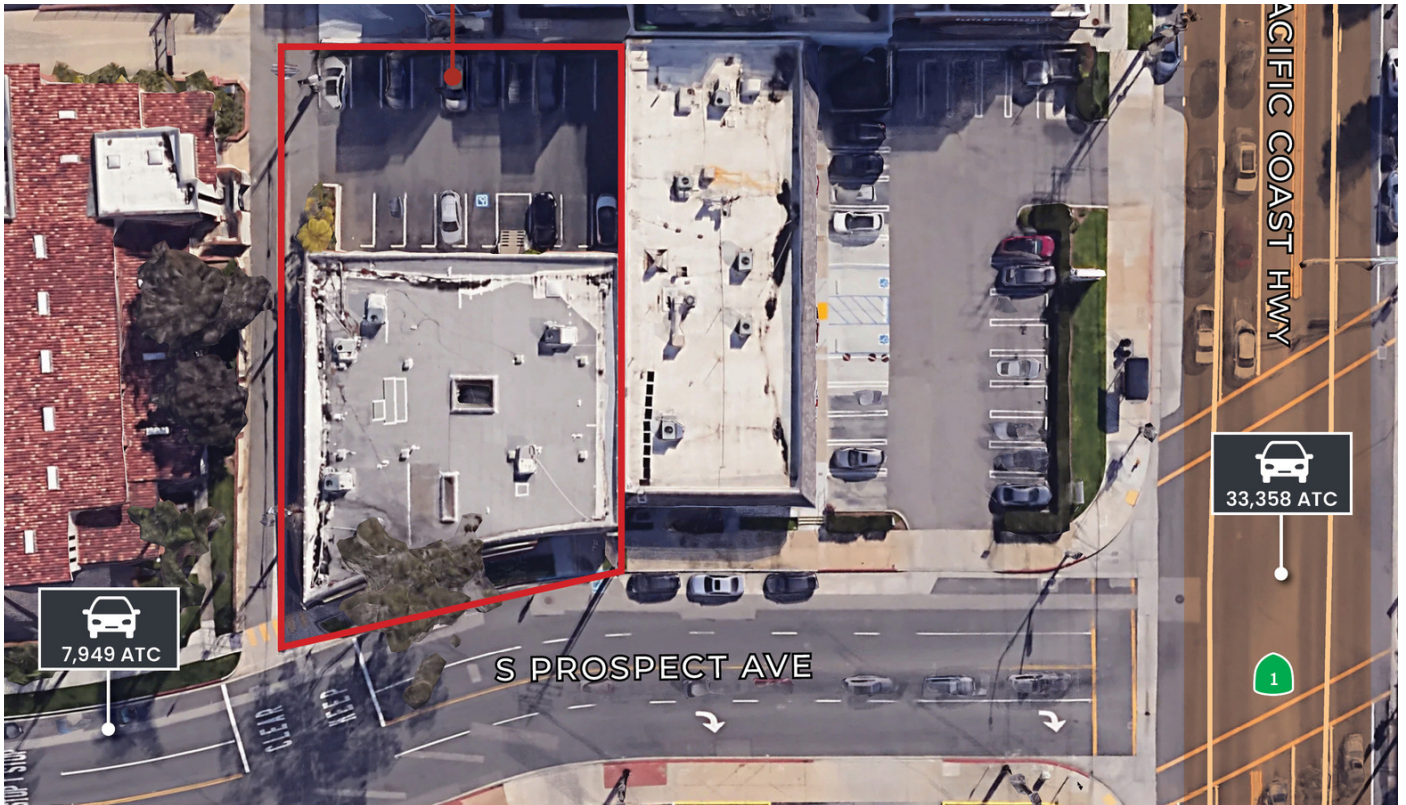
O: 949.355.1979  
atohidian@naicapital.com | CalDRE #02185779

### Nikki Liu

O: 949.468.2386  
nliu@naicapital.com | CalDRE #02038755

For Lease

# 1970 S Prospect Ave



**Steve Liu**

949.468.2385  
sliu@naicapital.com  
CalDRE #01323150

**Alex Tohidian**

949.355.1979  
atohidian@naicapital.com  
CalDRE #02185779

**Nikki Liu**

949.468.2386  
nliu@naicapital.com  
CalDRE #02038755

**NAI Capital**  
COMMERCIAL REAL ESTATE SERVICES, WORLDWIDE

For Lease

# 1970 S Prospect Ave



**Steve Liu**

949.468.2385  
sliu@naicapital.com  
CalDRE #01323150

**Alex Tohidian**

949.355.1979  
atohidian@naicapital.com  
CalDRE #02185779

**Nikki Liu**

949.468.2386  
nliu@naicapital.com  
CalDRE #02038755

**NAI**Capital  
COMMERCIAL REAL ESTATE SERVICES, WORLDWIDE

For Lease

# 1970 S Prospect Ave



**Steve Liu**

949.468.2385  
sliu@naicapital.com  
CalDRE #01323150

**Alex Tohidian**

949.355.1979  
atohidian@naicapital.com  
CalDRE #02185779

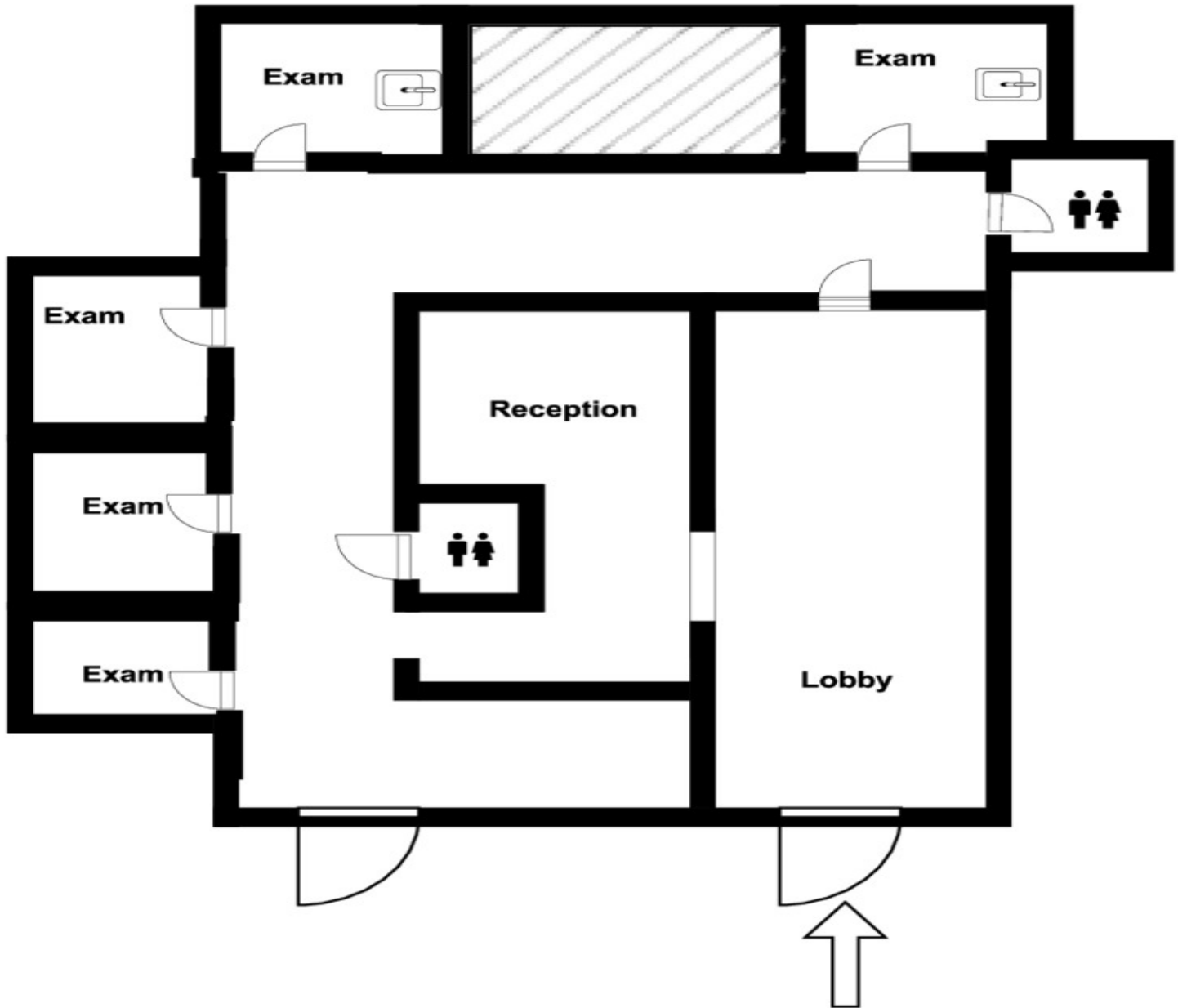
**Nikki Liu**

949.468.2386  
nliu@naicapital.com  
CalDRE #02038755

For Lease

# 1970 S Prospect Ave

## Suite #1



**Steve Liu**

949.468.2385  
sliu@naicapital.com  
CalDRE #01323150

**Alex Tohidian**

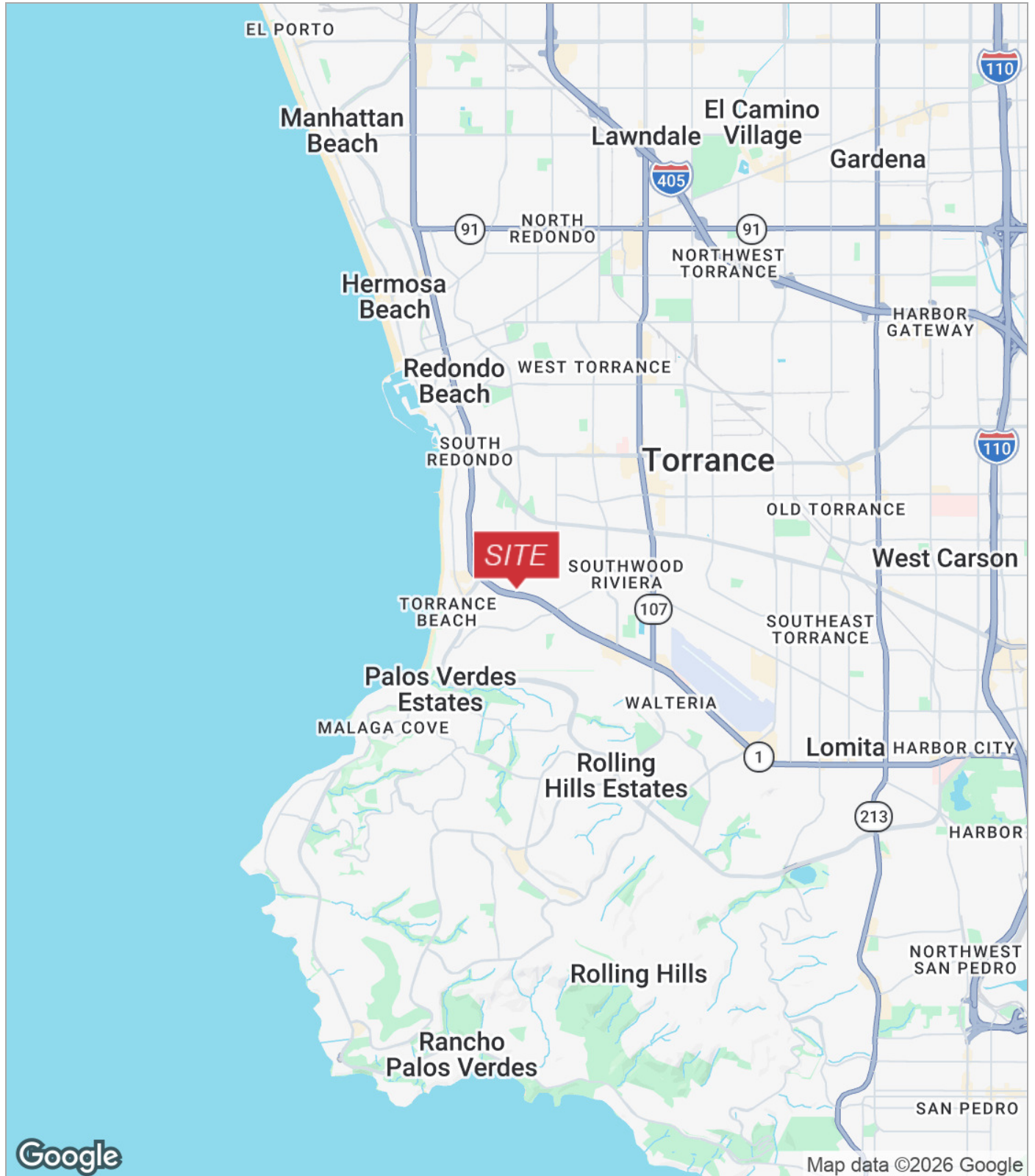
949.355.1979  
atohidian@naicapital.com  
CalDRE #02185779

**Nikki Liu**

949.468.2386  
nliu@naicapital.com  
CalDRE #02038755

For Lease

# 1970 S Prospect Ave



**Steve Liu**  
949.468.2385  
sliu@naicapital.com  
CalDRE #01323150

**Alex Tohidian**  
949.355.1979  
atohidian@naicapital.com  
CalDRE #02185779

**Nikki Liu**  
949.468.2386  
nliu@naicapital.com  
CalDRE #02038755