

R&D/Biotech High-End Lab Space +/- 1,150 - 10,681 sqft. Available for Lease

2201 JUNIPERO SERRA BLVD, DALY CITY, CALIFORNIA



MIKE PASSARELLI
DRE #01073382
650-670-6776
Mike@succession-re.com

KIRK MCKINNEY
DRE #01514824
415-254-2517
Kirk@succession-re.com

SUCCESSION REAL ESTATE
1010 B Street, Suite 200,
San Rafael, CA 94901

 **SUCCESSION**
REAL ESTATE

Located in the Bay Area Biotech Ecosystem

- Highly Improved Biotech Lab Space
 - » Demisable: +/-1,150 - 10,681 SQFT
- Suite E +/-9,531RSF; Second Floor – Highly Improved Veterinarian/Dental//Medical/Lab Space; \$2.75/SF/Mo/NNN
- Suite L +/-1,150RSF; Second Floor – Fully Built Out Diagnostics Lab Space; \$3.75/SF/ Mo NNN
- NNN's: \$1.08/RSF/Mo
- \$5M Recent Lab Space Buildout suitable for R&D, Biotech, Life Sciences including Medical, Dental and all Laboratory Uses.
- Epoxy Paint & Floor Coverings with Epoxy Cove Base
- Medical Grade Finishes
- Distributive Gas Lines & Upgraded HVAC
- Diagnostic Wet Lab
- Elevator Served
- 600 AMPS Dedicated Power
- New 80kW Generac SG080 Emergency Generator47
- Shared Surface Parking Spaces (1/300 SF)
- Hwy. 280 Visibility

[VIEW 3D MODEL](#)



Proposed Updated Interior Entryway

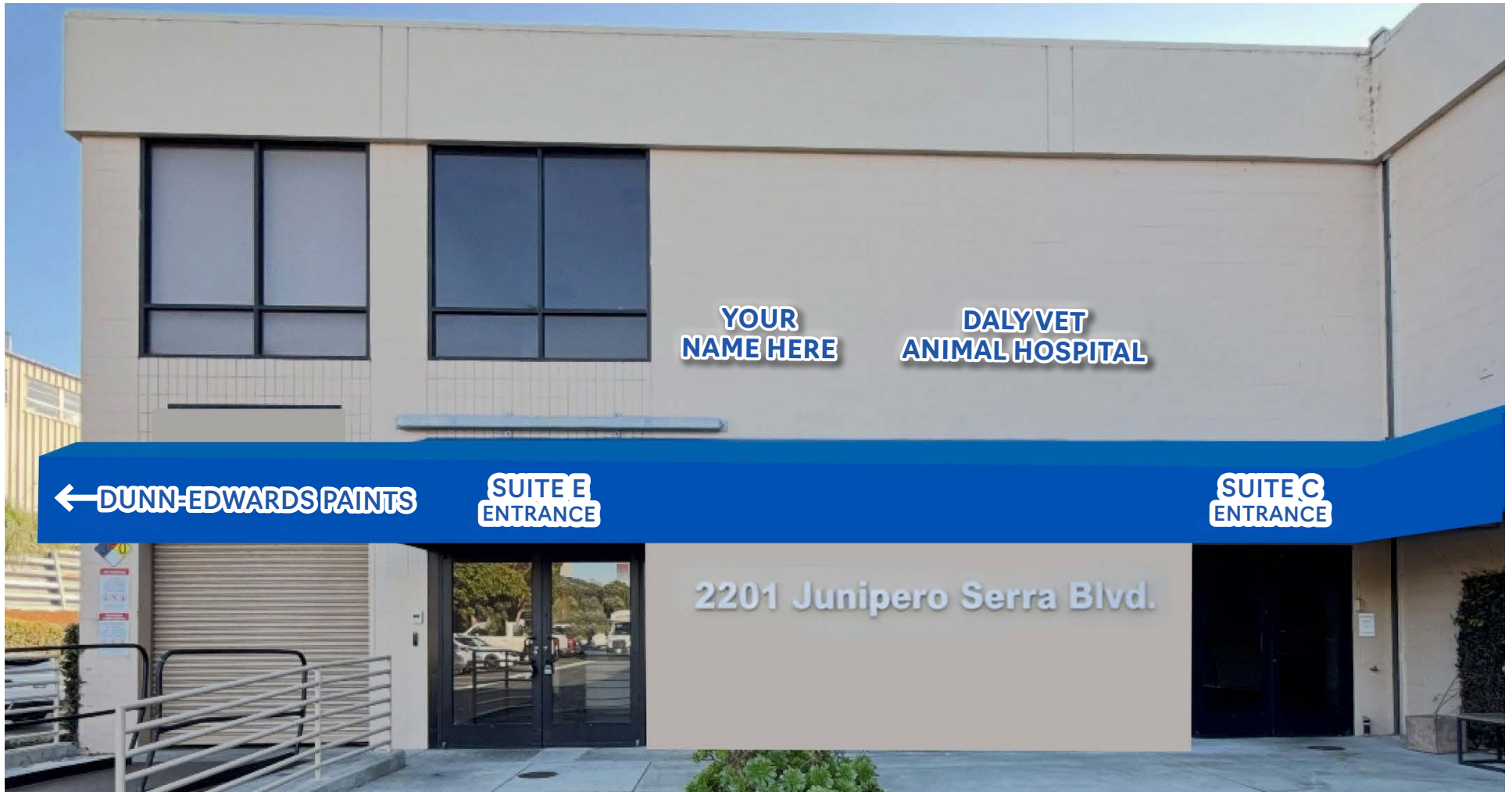


- » Modernized Entry Way with Natural Light
- » Aesthetically Appointed Surfaces
- » Medical Grade Quality
- » Elevator Served



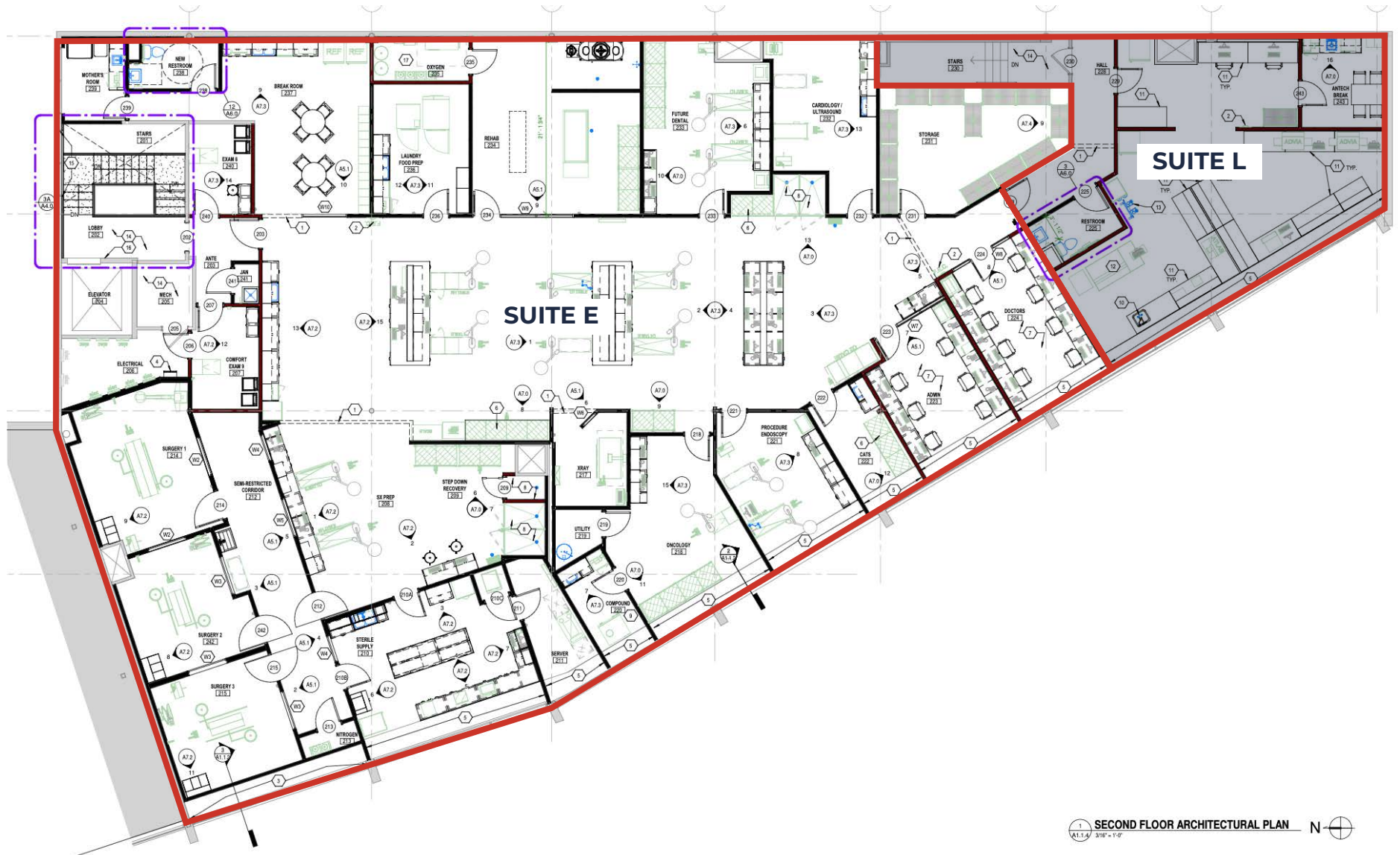
Proposed Updated Exterior Entryway

- » Planned Remodeled Professional Entrance
- » Updated Entry Way with Natural Light
- » Electrical Cabinets Covered w/ Bldg. Signage
- » Awnings Personalized w/ your Logo
- » Aesthetically Appointed Surfaces
- » Reserved Parking



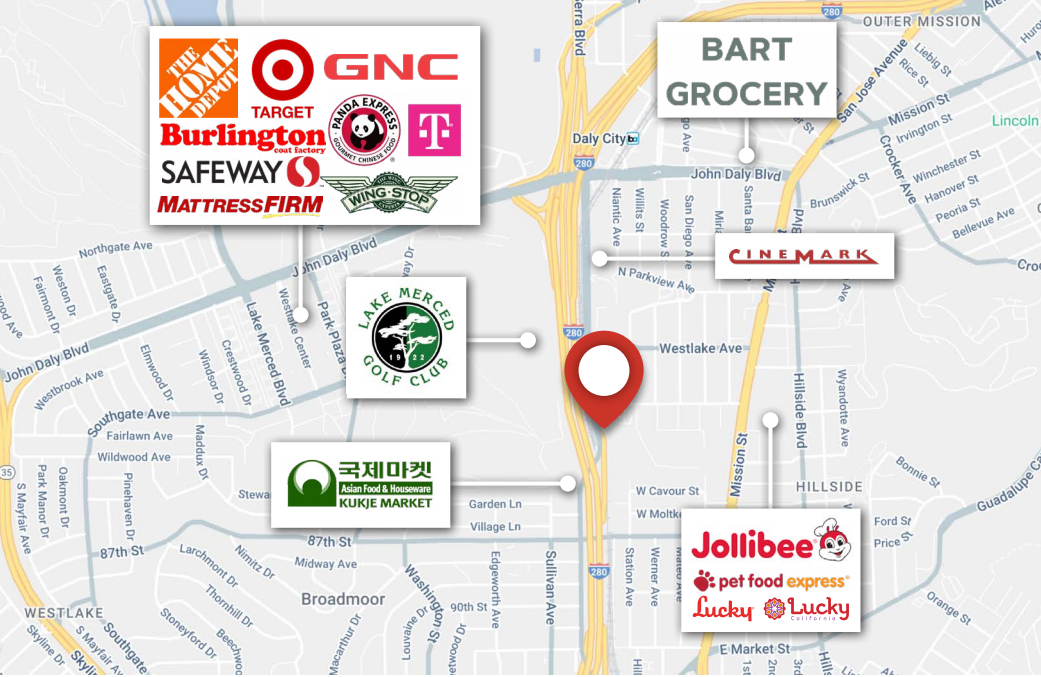
10,681 +/- RSF ~ HIGH END LAB SPACE

** DEMISABLE **

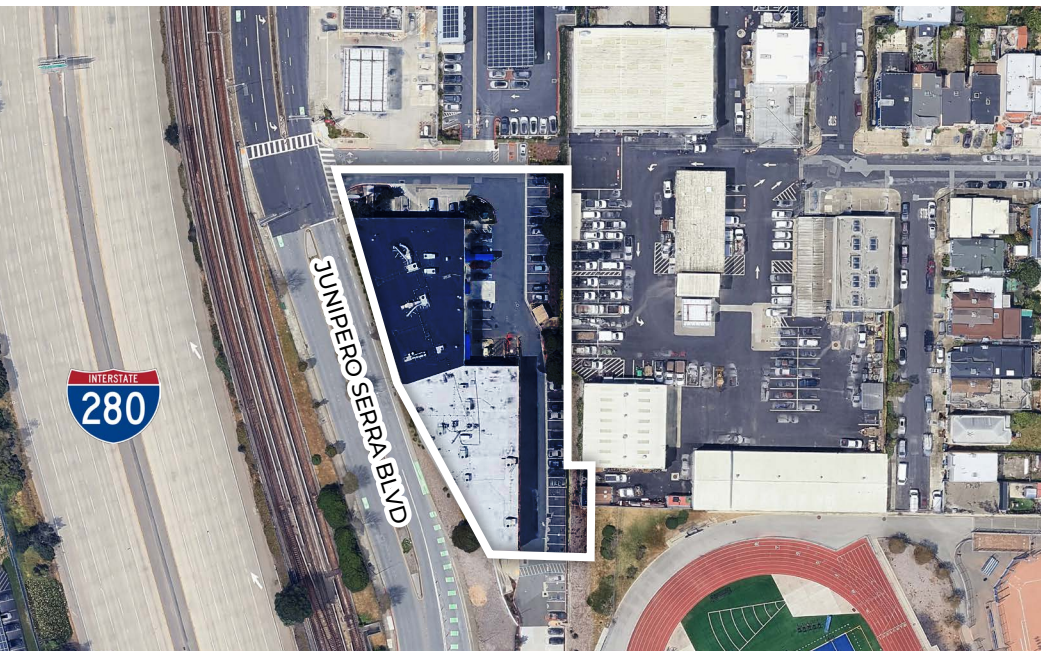


1 SECOND FLOOR ARCHITECTURAL PLAN N
A1.1.4 3/16" = 1'-0"

Location—Highly Visible, Easy Access



- Easy Access to HWY 280 With Visibility and Signage
- Near Amenities and Services
- Abundant Parking & Easy Walk to BART
- Gateway between San Francisco and San Mateo
- Zoned C-1, Light Commercial, Medical Use Permitted



R&D Biotech Life Sciences Lab Space in Like New Condition





WORK WITH SUCCESSION

Contact us.

MIKE PASSARELLI

DRE #01073382 | 650-670-6776

Mike@succession-re.com

KIRK MCKINNEY

DRE #01514824 | 415-254-2517

Kirk@succession-re.com

