

Compton

For Rent
**20-26 Brunswick Place
Old Street N1**



Self-contained HQ by Old Street
with private roof terrace. Fully
customisable to a bespoke tenant fit-
out.

For Rent

20-26 Brunswick Place
Old Street N1

Size

10,880 Ft²

Rent

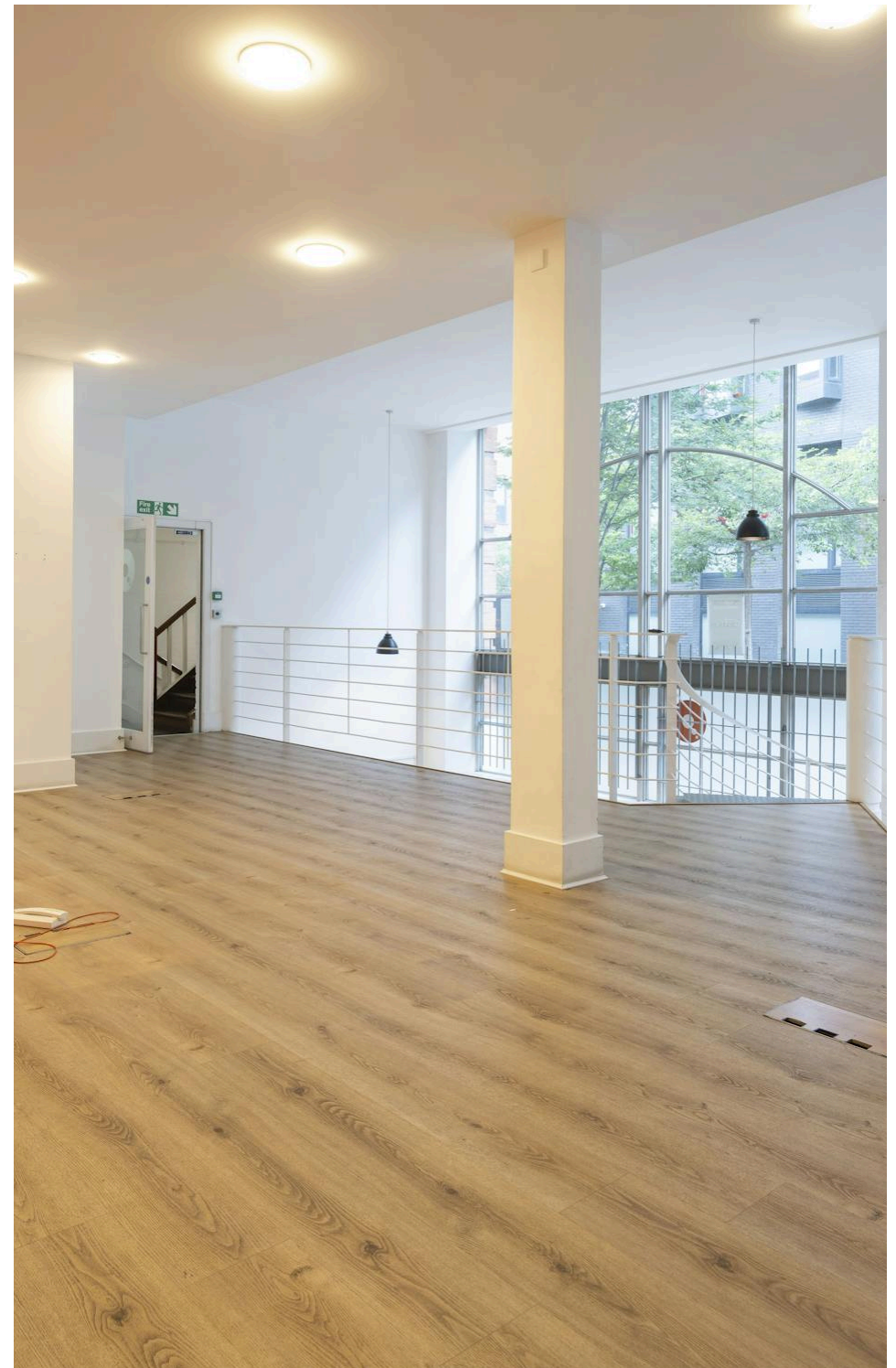
P.O.A.

Fitout

Not Fitted. Can be fitted, subject to terms.

Description

Located just moments from Old Street Roundabout, this self-contained HQ offers 10,800 sq ft of office and showroom space. The space can be tailored to suit a tenant's needs, whether delivered to a high-quality CAT A specification or with a bespoke full fit-out. Bright, open-plan floor plates with modern air conditioning provide a flexible working environment, while the ground and lower ground floors feature prominent showroom frontage and are connected by an internal staircase. Tenants will also benefit from access to a private roof terrace which is ideal for informal meetings or downtime with stunning views. Surrounded by a vibrant mix of tech, creative, and professional occupiers, this is a rare opportunity in one of London's best-connected commercial hubs.



Compton

For Rent

20-26 Brunswick Place
Old Street N1

[Click to Play](#)



For Rent

20-26 Brunswick Place
Old Street N1

Office

Size

10,880 Ft²

Rent

P.O.A.

Fitout

Not Fitted. Can be fitted, subject to terms.



Compton

For Rent

20-26 Brunswick Place
Old Street N1

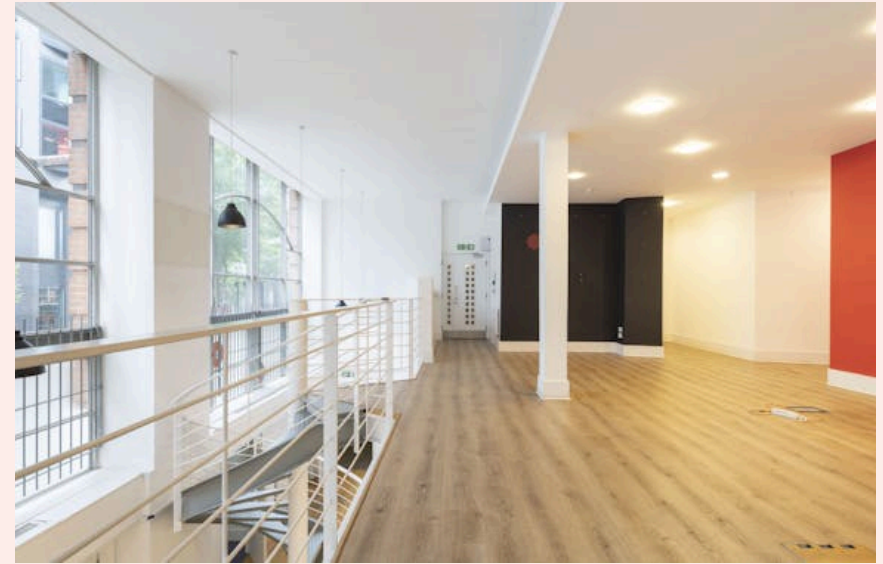
Office



For Rent

20-26 Brunswick Place
Old Street N1

Ground Floor



Office

For Rent

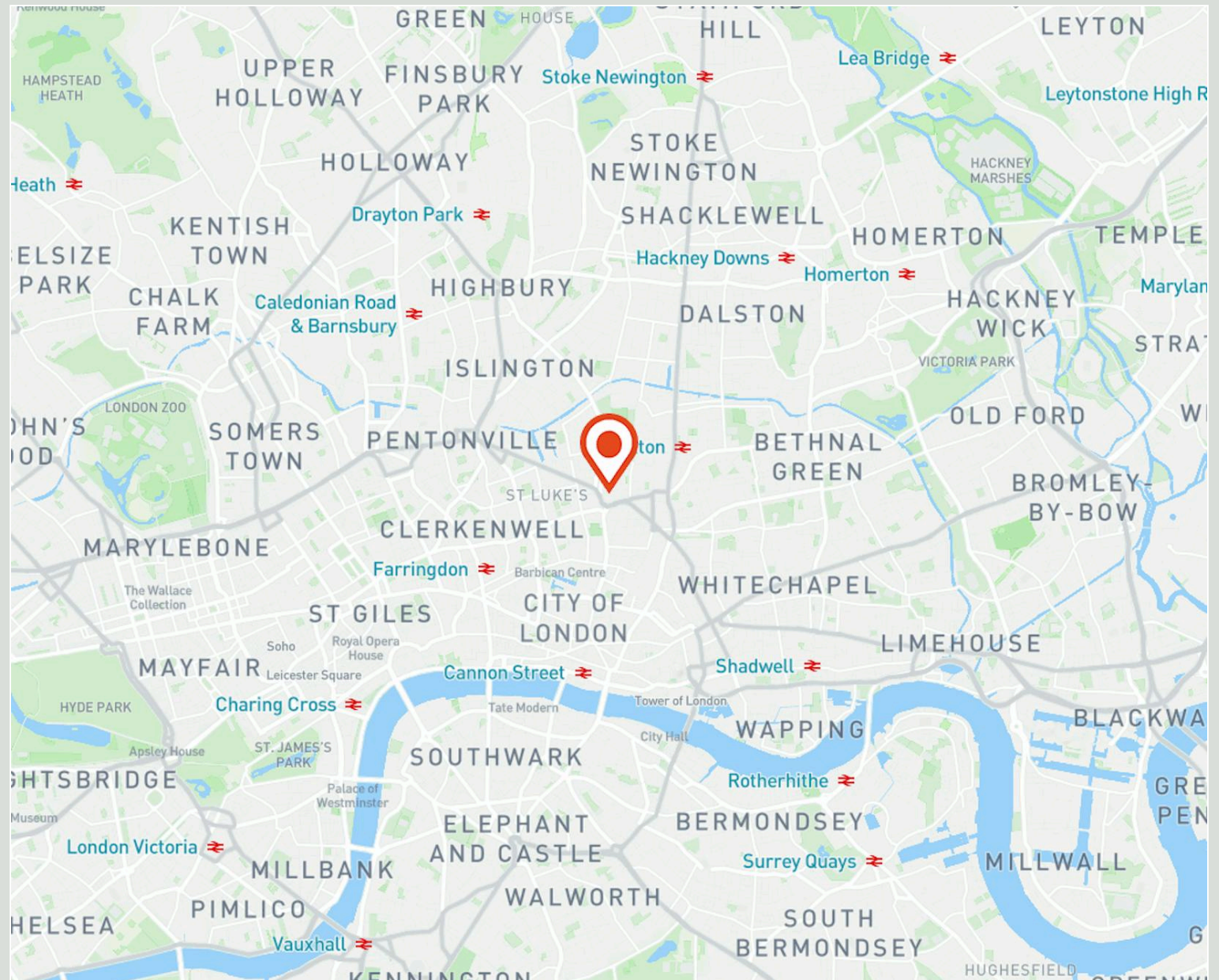
20-26 Brunswick Place
Old Street N1

Location

Located by the iconic Old Street Roundabout, this address offers outstanding connectivity in one of London's most vibrant business districts. Just moments from Old Street Station (Northern Line and National Rail), with easy access to Moorgate, Liverpool Street, and Shoreditch High Street, it's ideally positioned for both local and international travel.

Home to a dynamic mix of tech, creative, and professional businesses, the area is known for its energy and innovation. A wide range of independent cafes, restaurants, bars, and fitness studios are on your doorstep, offering a strong work-life balance. With Shoreditch, Hoxton, and the City all within walking distance, this is one of London's most exciting and well-connected office locations.

Compton



For Rent

20-26 Brunswick Place
Old Street N1

Roof Terrace

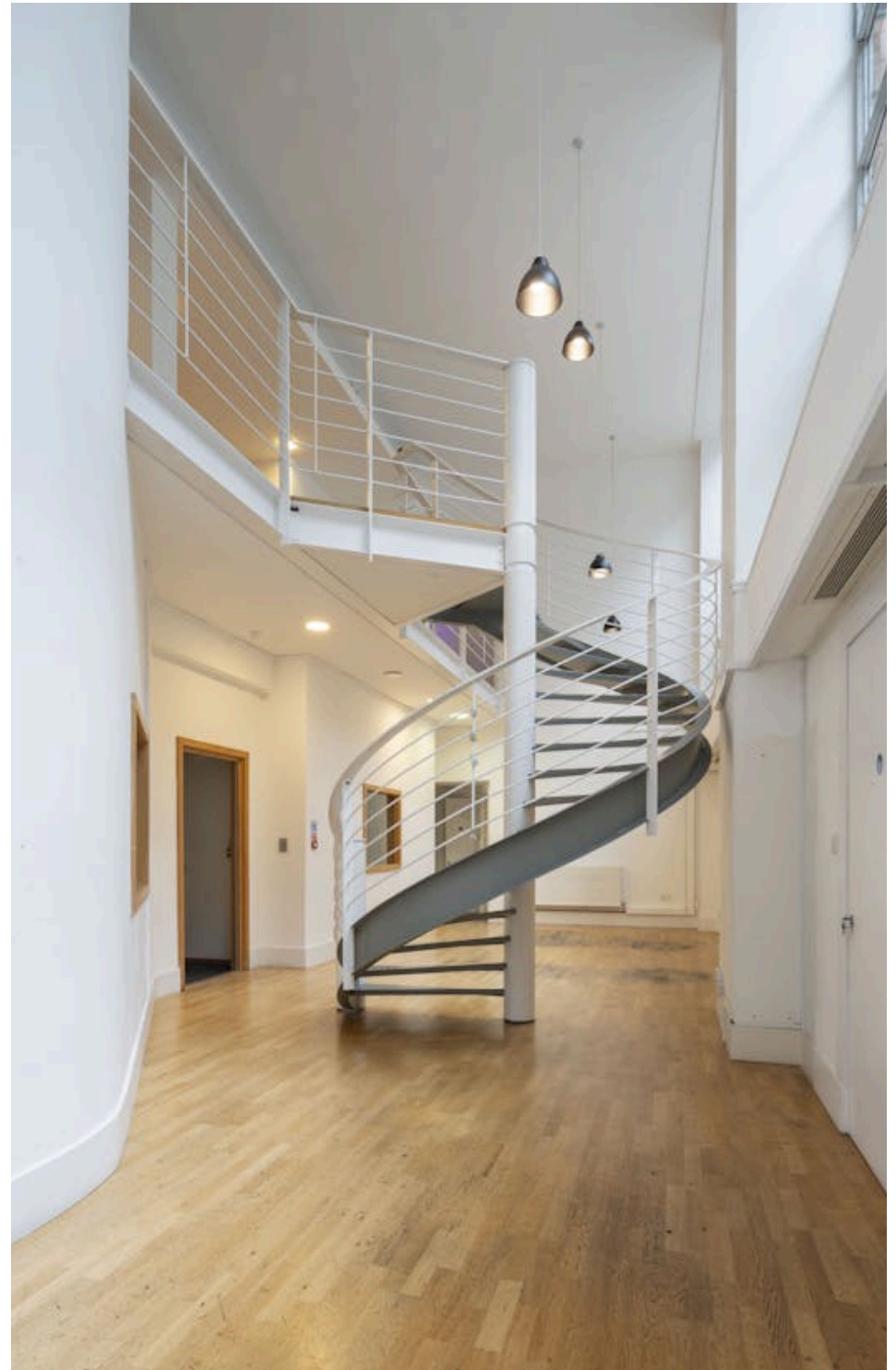


For Rent

20-26 Brunswick Place
Old Street N1

Amenities

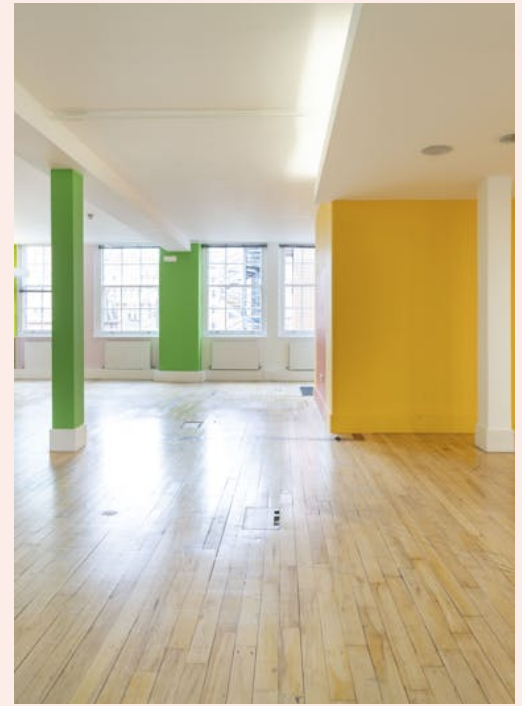
- Roof terrace offering panoramic views and outdoor breakout space
- Modern air conditioning systems providing comfort across all floors
- Brand new modern lighting
- Passenger lift
- End of journey shower facilities & secure cycle storage
- All floors can be delivered fully fitted, subject to terms



For Rent

20-26 Brunswick Place
Old Street N1

Office



Ground & Lower Ground Unit

Name	Sq Ft	Rent (Sq Ft)	Rates Payable (Sq Ft)	Service Charge (Sq Ft)	Total Month	Total Year	Availability
3rd	2,271	-	£13.07	£1	£2,662.75	£31,952.97	Available
2nd	2,271	-	£13.07	£1	£2,662.75	£31,952.97	Available
1st	2,271	-	£13.07	£1	£2,662.75	£31,952.97	Available
Ground - & Lower Ground	4,067	-	£13.07	£1	£4,768.56	£57,222.69	Available
Building - Entire Building	10,880	-	£13.07	£1	£12,756.80	£153,081.60	Available

For Rent

20-26 Brunswick Place
Old Street N1

Tenure

New Lease

Availability

Available Immediately

Compton Concierge

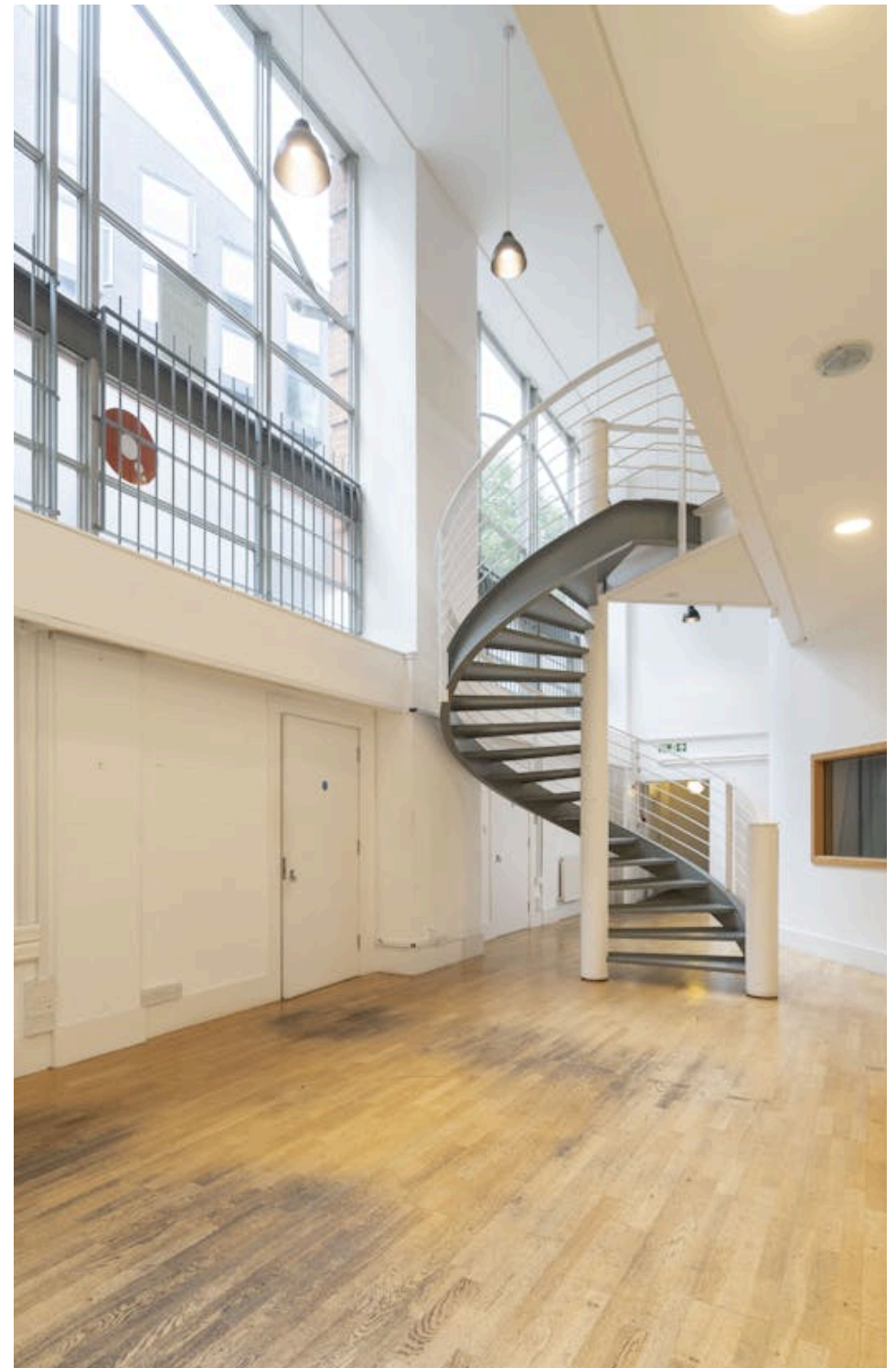
Want your workspace *managed*?

Find out more

compton.london/concierge

Content

Watch the Film
(click button)



Contact Us

compton.london

020 7101 2020

enquiries@compton.london

All appointments to view must be arranged via sole agents, Compton, through:



Alex Sugar

as@compton.london

0207 101 2020 | 07585 793 379



Emma Higgins

eh@compton.london

0207 101 2020 | 07769 605 295



Shaun Simons

ss@compton.london

0207 101 2020 | 07788 423131