



205
-215
LEXINGTON

NEWLY RENOVATED MEDICAL SPACE

205 LEXINGTON — ENTIRE 17TH FLOOR

TURNKEY MEDICAL SPACE WITH SWEEPING SKYLINE VIEWS

DISCOVER THIS NEWLY RENOVATED MEDICAL SUITE, FEATURING 6 EXAM ROOMS, 3 OFFICES, AND A PRIVATE TERRACE FILLED WITH NATURAL LIGHT AND CITY VIEWS—ALL WITHIN A LOBBY-ATTENDED, 24/7 BUILDING WITH SPACIOUS ELEVATORS.

SPACE
17TH FLOOR

SIZE
4,923 SQ FT

RENT
INQUIRE

POSSESSION
IMMEDIATE

TERM
NEGOTIABLE



205
-215
LEXINGTON

PHOTO GALLERY



FLOOR PLAN

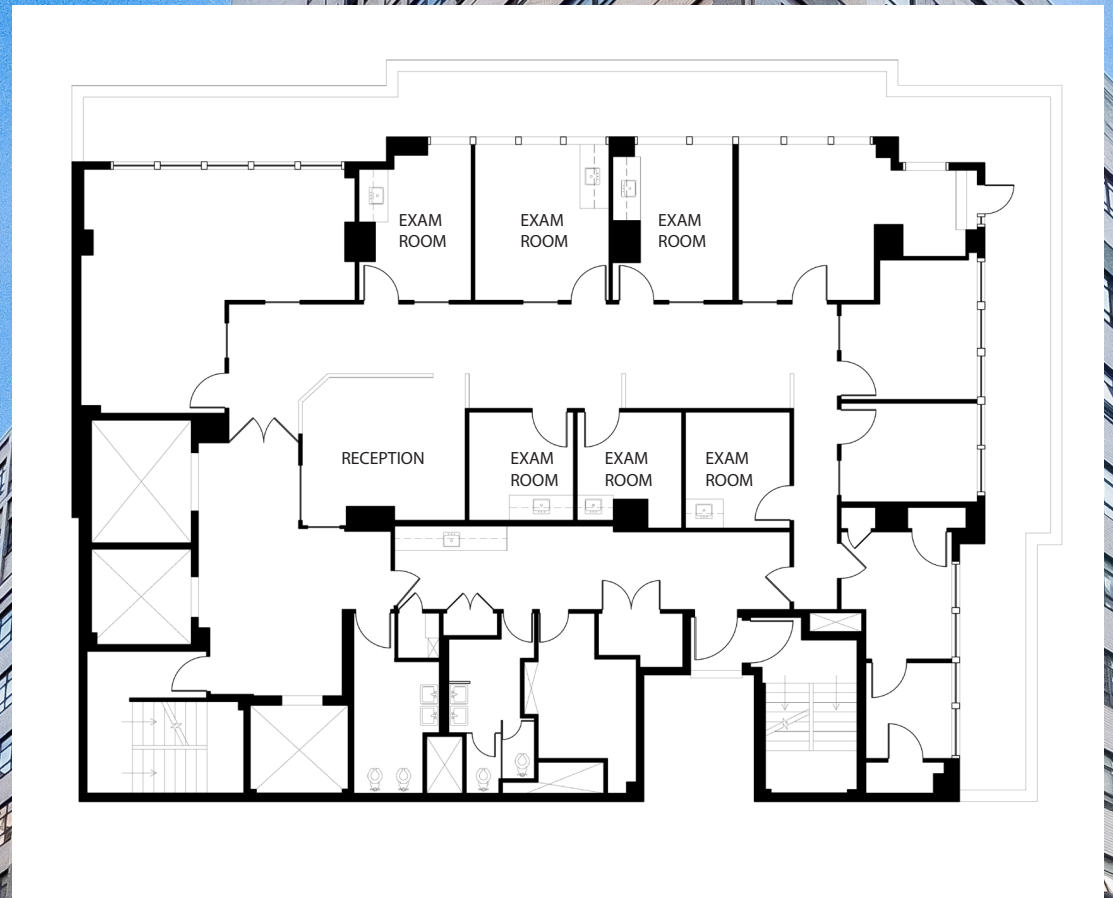
4,923 SQUARE FEET

6 MEDICAL EXAM ROOMS

3 LARGE OFFICE/ MEETING ROOMS

1 PRIVATE OUTDOOR TERRACE

1 RECEPTION & WAITING AREA



NEIGHBORHOOD & TRANSIT

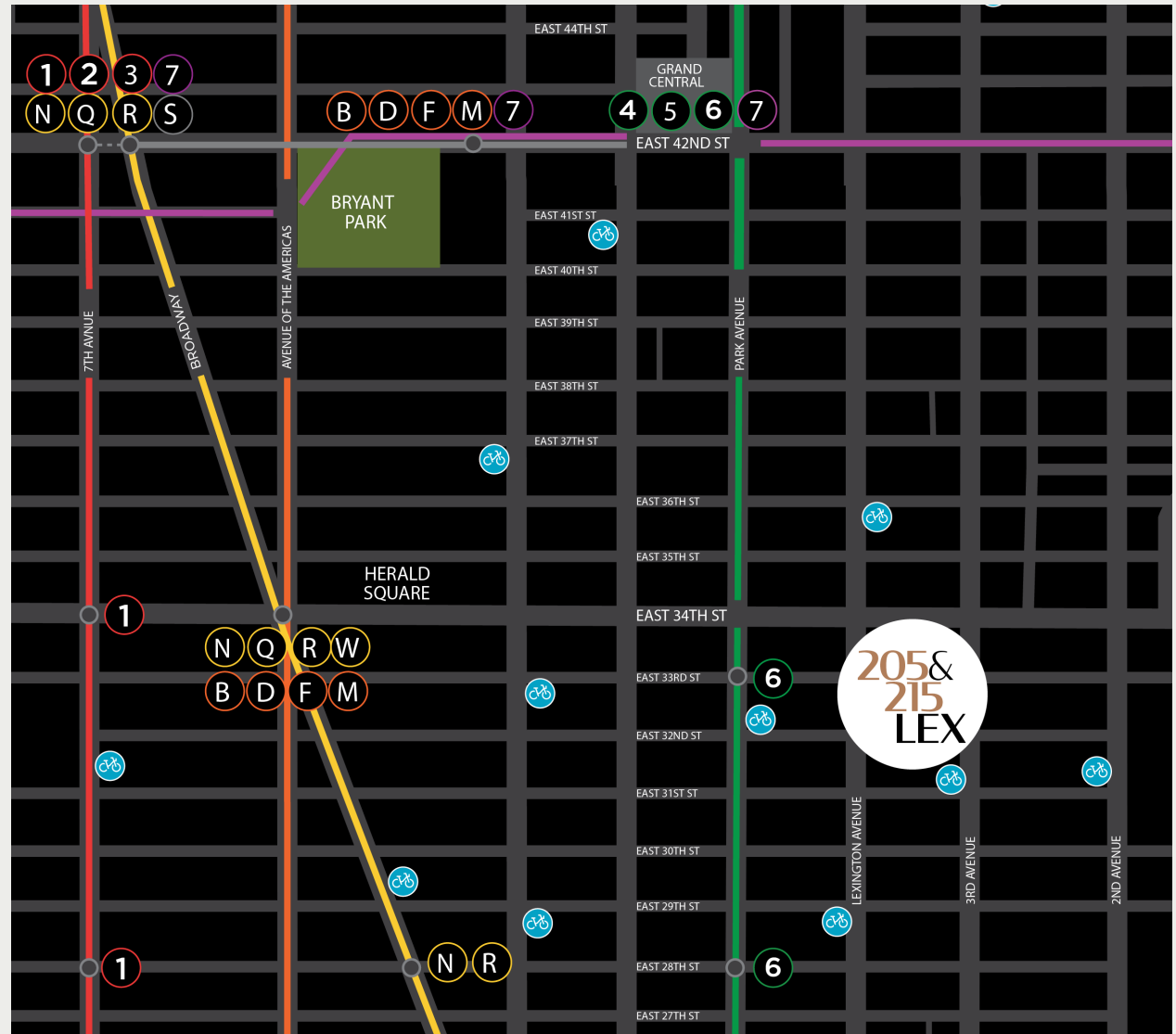
CLOSE TO MAJOR TRANSIT HUBS AND
SUBWAY CONNECTIONS. LESS THAN
15 MINUTES FROM METRO NORTH,
LIRR, PATH, NJ TRANSIT, AND AMTRAK.

1 STOP FROM
GRAND CENTRAL

2 MINUTE WALK TO
THE M34 SBS STOP

10 MINUTE WALK
TO PENN

8 MINUTE WALK
TO 33RD ST PATH



205
-215
LEXINGTON

LEASING CONTACT

JARED STERNBERG
KAUFMAN LEASING CO.
212.471.4352
JAREDS@KFMN.NYC



THE SOMERSET GROUP
INVESTMENT | DEVELOPMENT | MANAGEMENT