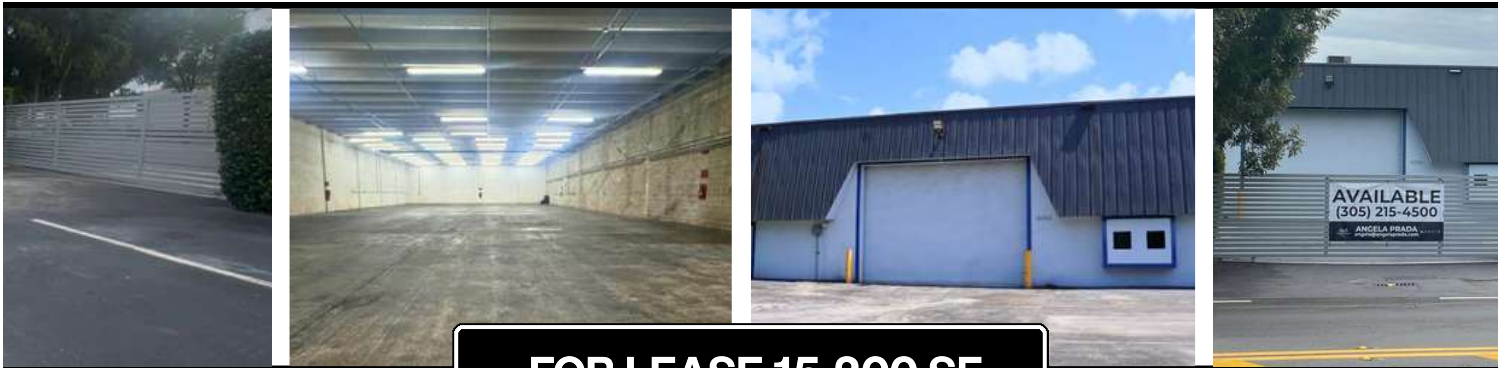




S M I T H
COMMERCIAL PROPERTY GROUP

FREE STANDING INDUSTRIAL

8080 Northwest 33rd Street, Doral, Florida 33122



FOR LEASE 15,200 SF

- PROPERTY HIGHLIGHTS -

**Building Size: 15,200 SF | Ceiling High: 20' | Parking spaces: 11 |
Year Built: 1980 | Land Use: Heavy Industrial**

Although all information provided regarding sale, lease, or financing is from sources deemed reliable, such information has not been verified, and no express or implied representation is made as to its accuracy. The information is subject to errors, omissions, changes in price, rent, or other conditions, prior sale, lease, or financing, or withdrawal without notice.

PROPERTY DESCRIPTION

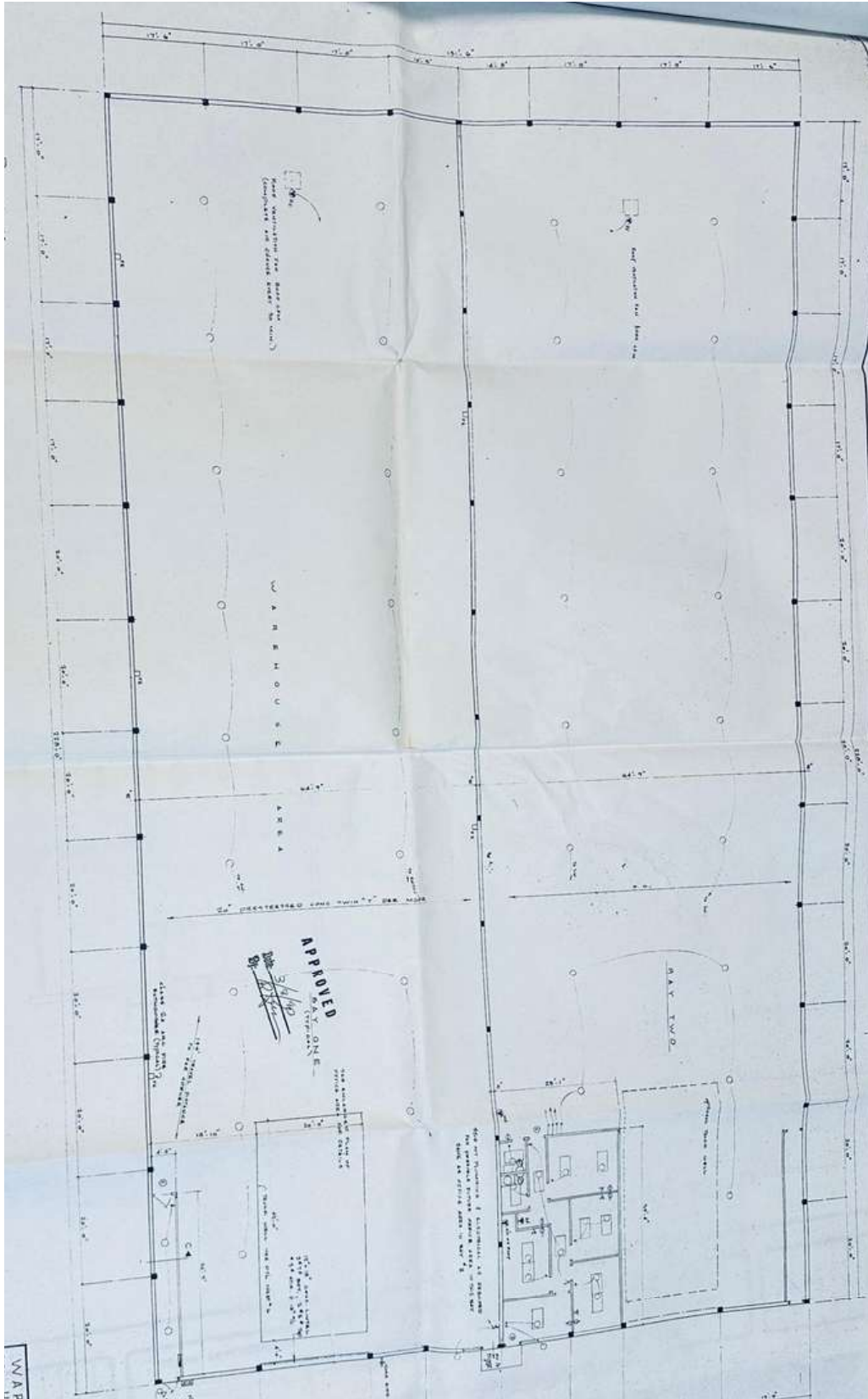
- **Property Address:** 8080 – NW 33rd ST, Doral, FL 33122
- **Property Type:** Industrial
- **Building size:** 15,200 SF
- **Warehouse Size:** +/- 13,400 SF – all under A/C
- **Office Size:** +/- 1,800 SF - brand new A/C and high impact carpets
- **Ceiling High:** 20'
- **File Cabinets included:** Rolling file storage system in place
- **Restrooms:** 2 with multiple stalls and 2 showers.
- **Kitchenette:** Yes
- **Loading Doors:** 1 – Double wide – Ground level.
- **Year Built:** 1980
- **Remodeled:** 2004
- **New Roof:** 2024
- **Land Use:** Heavy Industrial
- **Flood Zone:** No
- **Power:** 3-phase (225 amps)
- **Light fixtures:** LED
- **Sprinkles:** Yes, with extra sprinkle' lines
- **Columns:** None
- **Security:** Gated with alarm system. Armored Doors and windows throughout the building.
- **Parking:** Private parking, new pavement.
- **Parking spaces:** 11

- **Other features:** Office furniture included (if needed), beautiful landscaping.

Prime location in Doral near main **highways & MIA.**
Ideal for logistics, storage, or light manufacturing.

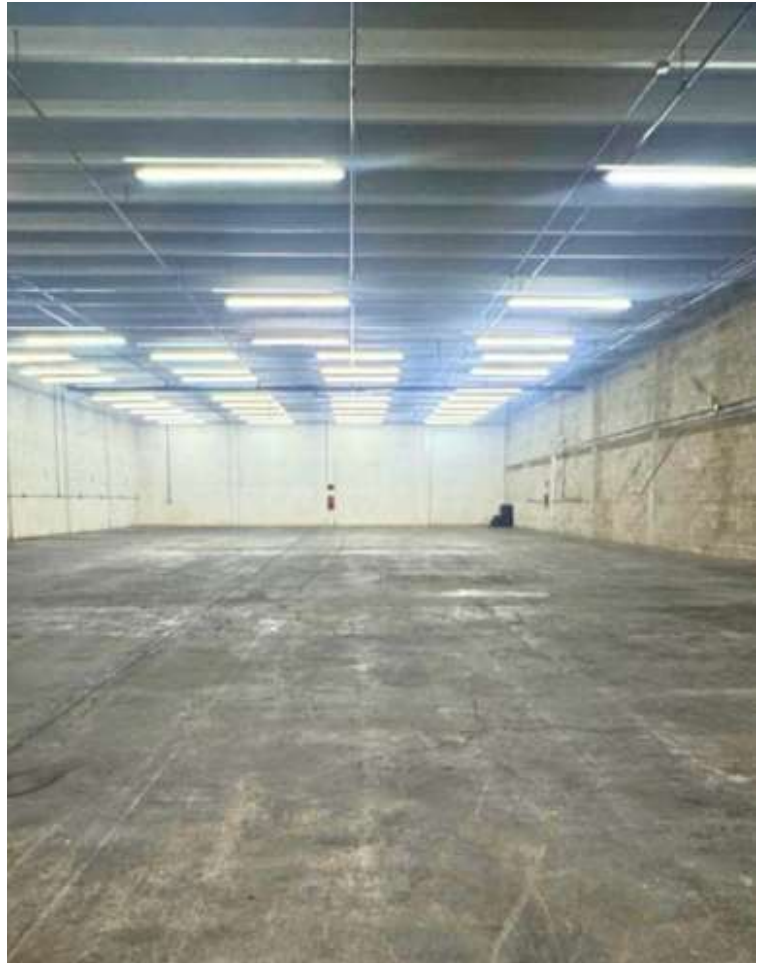
Although all information provided regarding sale, lease, or financing is from sources deemed reliable, such information has not been verified, and no express or implied representation is made as to its accuracy. The information is subject to errors, omissions, changes in price, rent, or other conditions, prior sale, lease, or financing, or withdrawal without notice.

FLOOR PLAN



Although all information provided regarding sale, lease, or financing is from sources deemed reliable, such information has not been verified, and no express or implied representation is made as to its accuracy. The information is subject to errors, omissions, changes in price, rent, or other conditions, prior sale, lease, or financing, or withdrawal without notice.

PROPERTY PHOTOS



Get in Touch

Angela Prada
Commercial Real Estate Advisor
305.215.4500
Angela@smith-cre.com