

# 12202-12212 Washington Blvd Culver City



KINYAN REALTY  
KEYVAN MORADIAN  
DRE:01926553

# Highlights

- 19,689 SF LOT
- 11,000 SF BUILDING
- BUILT 2001
- MEDICAL USE
- PRIME CULVER CITY
- FULLY BUILT-OUT AS STANDARD MEDICAL SPACE
- 3,000 - 11,000 SF AVAILABLE

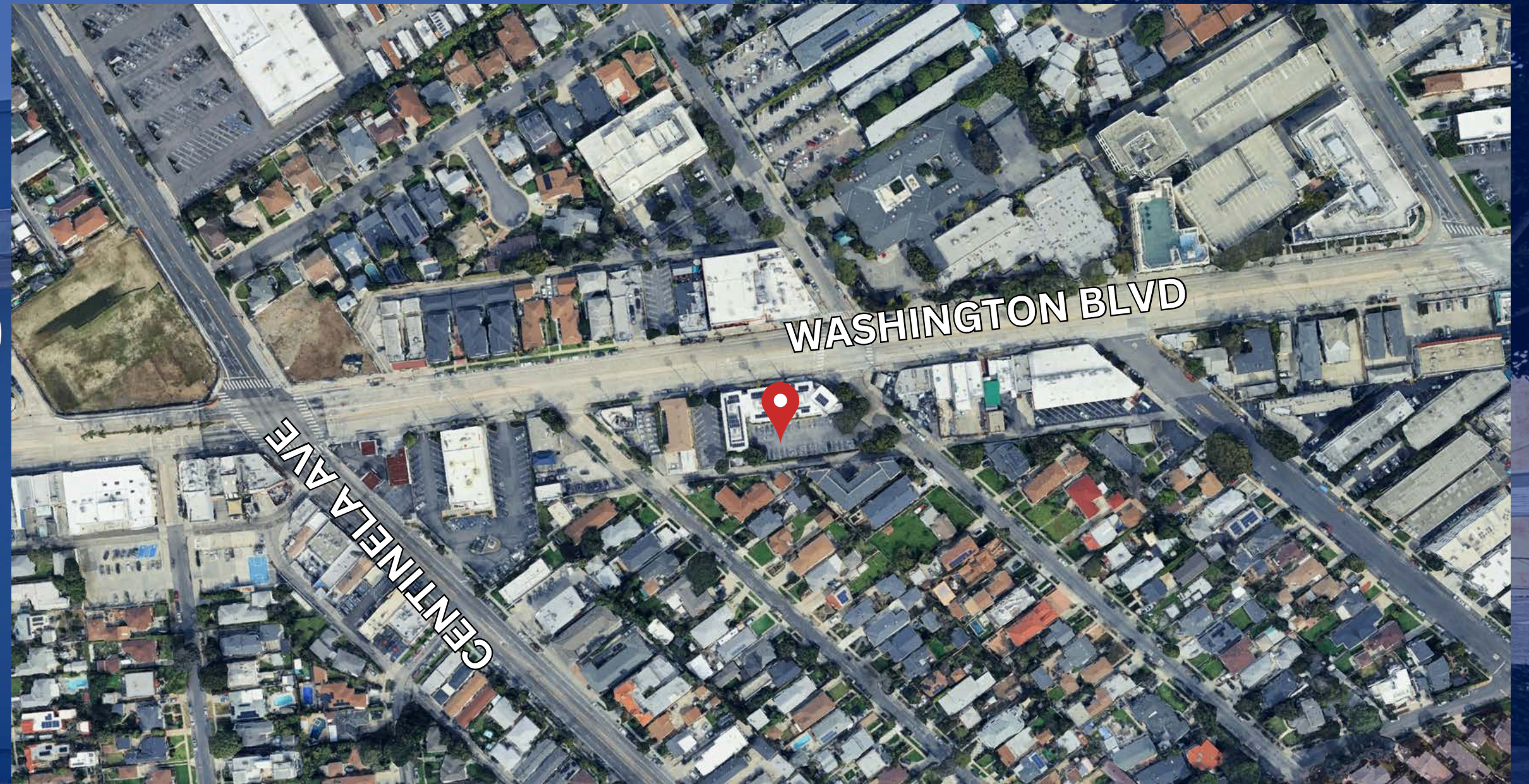
 PARKING  
IN REAR



SCHOOL  
SPEED  
LIMIT  
25  
WHEN  
CHILDREN  
PRESENT

# OVERHEAD SHOT

PARKING  
IN REAR





# INTERIOR PHOTOS





# CONTACT US

KEYVAN MORADIAN

DRE 01926553

(310)-467-6320

[KEYVAN@MORADIANENTERPRISES.COM](mailto:KEYVAN@MORADIANENTERPRISES.COM)