



IRON HILL CORPORATE CENTER

700, 750 & 800 PRIDES CROSSING
NEWARK, DELAWARE



BLUE WING - 800 PRIDES CROSSING



WHITE WING - 700 PRIDES CROSSING



RED WING - 750 PRIDES CROSSING



IRON HILL CORPORATE CENTER

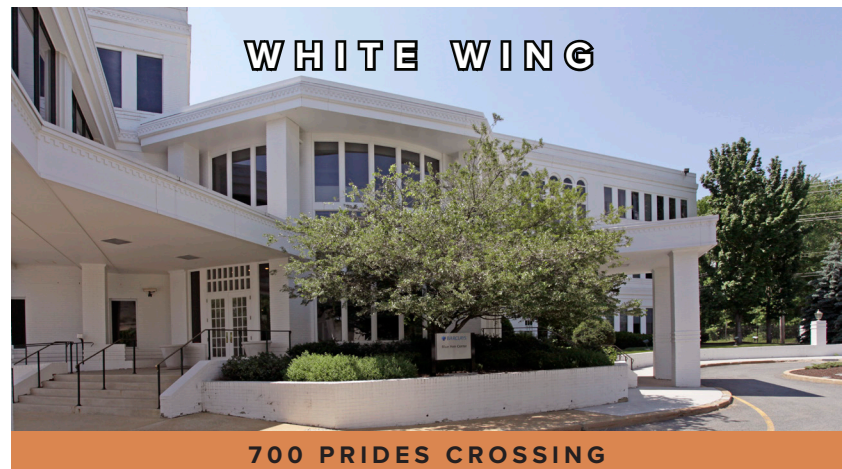
THE PARK

Iron Hill Corporate Center is a three building office complex totaling 275,234 rentable square feet. It is well located to I-95, Christiana Hospital and The University of Delaware.

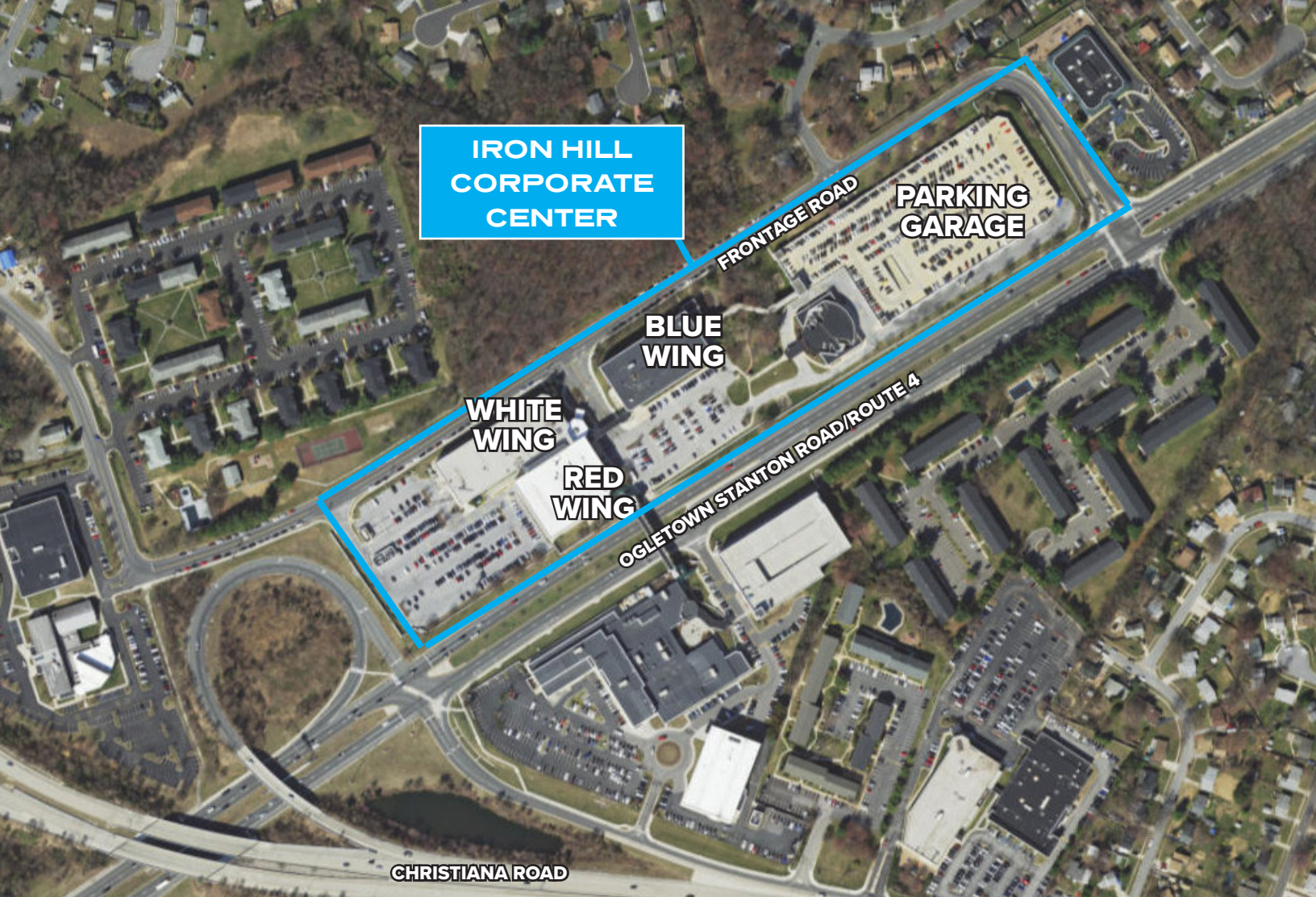
AMENITIES

Tenants at Iron Hill Corporate Center will enjoy the following amenities:

- Free on-site fitness center
- On-site cafe
- Numerous hotels, restaurants and shops within a 1 mile radius
- Ample on-site parking at 4.0 per 1,000 ratio
- Covered parking with 912 space garage
- Redundant dual power feeds service to the property
- Ceiling heights that are approximately 10'
- On-site property management
- Dart bus service with a stop at site
- Telecommunication vendors include:
Verizon, AT&T and Comcast
- Tenants in the park include:
Allied First Bank
CSOLS, Inc.
Centene Management Company
Computer Aid, Inc.
Delaware Imaging Partners
ENT & Allergy of Delaware
Master, Sidlow & Associates, P.A.
Rise Physical Therapy
Taghleef Industries



- Constructed in 1992
- 105,475 rentable SF
- Three (3) floors
- Zoned - CR
- Building currently includes:
 - Dual power feeds
 - HVAC via water source heat pumps
 - Two (2) 200 ton evaporative cooling towers for the cooling loop in the summer - a 435KW electric boiler maintains loop temperature in winter
- Three (3) hydraulic piston driven elevators
- Property includes a 1600 KW diesel with a 3,000 gallon skid-mounted fuel tank. 1 338KVA and 125KVA Liebert UPS system is also available



**IRON HILL
CORPORATE
CENTER**

**PARKING
GARAGE**

**BLUE
WING**

**WHITE
WING**

**RED
WING**

FRONTAGE ROAD

OGLETHORPE STANTON ROAD/ROUTE 4

CHRISTIANA ROAD



RED WING

750 PRIDES CROSSING

- Constructed in 1988
- 84,191 rentable SF
- Three (3) floors
- Zoned - CR
- Building currently includes:
 - Dual power feeds
 - HVAC via water source heat pumps with 200-ton evaporative cooling tower for the cooling loop in summer
 - Two (2) DX split systems are located on the roof
 - A 435KW electric boiler maintains loop temperature during the winter hydraulic piston driven elevators
- Two (2) hydraulic piston driven elevators
- Building includes a 200 amp transfer switch with emergency circuit



BLUE WING

800 PRIDES CROSSING

- Constructed in 1990
- 85,568 rentable SF
- Three (3) floors
- Zoned - CR
- Building currently includes:
 - Dual power feeds
 - HVAC via water source heat pumps
 - Two (2) 290-ton evaporative cooling towers for the cooling loop in the summer
 - 435KW electric boiler maintains loop temperature in the winter
- Three (3) hydraulic piston driven elevators
- Property includes a 1200 KV diesel with a 2,000 gallon skid-mounted fuel tank - one 125KVA Liebert UPS system is also available



IRON HILL CORPORATE CENTER

AMENITY SPACE - RED WING - 750 PRIDES CROSSING



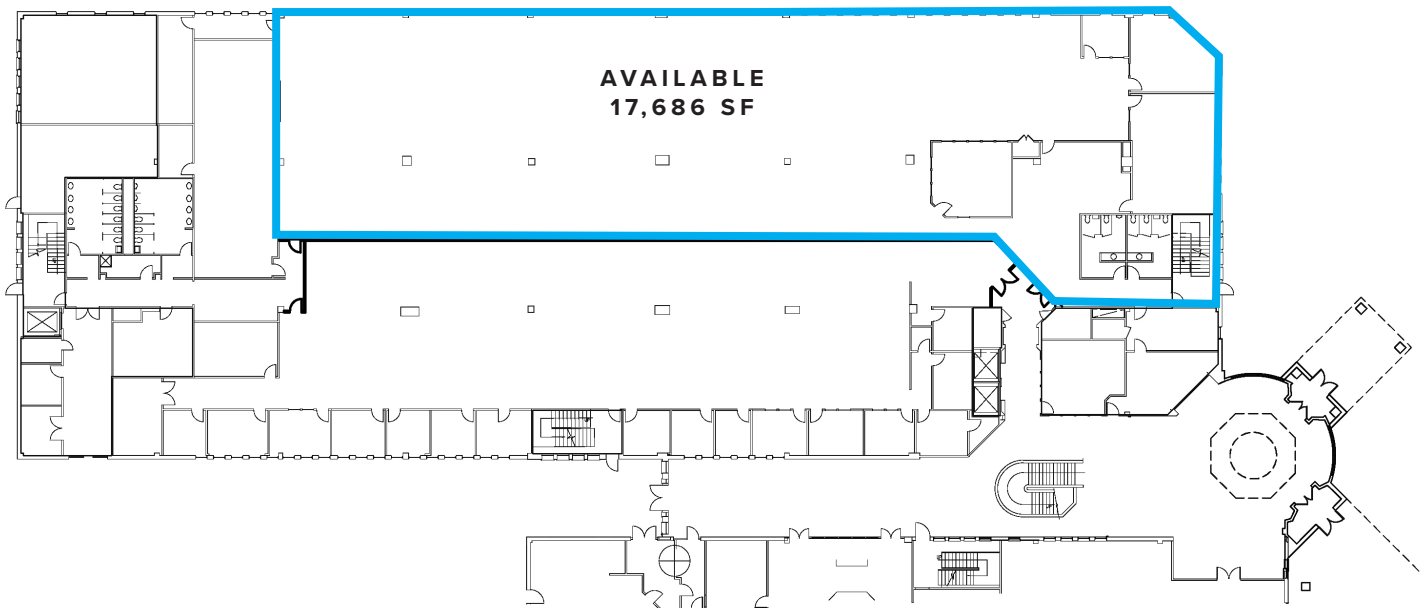
CAFE



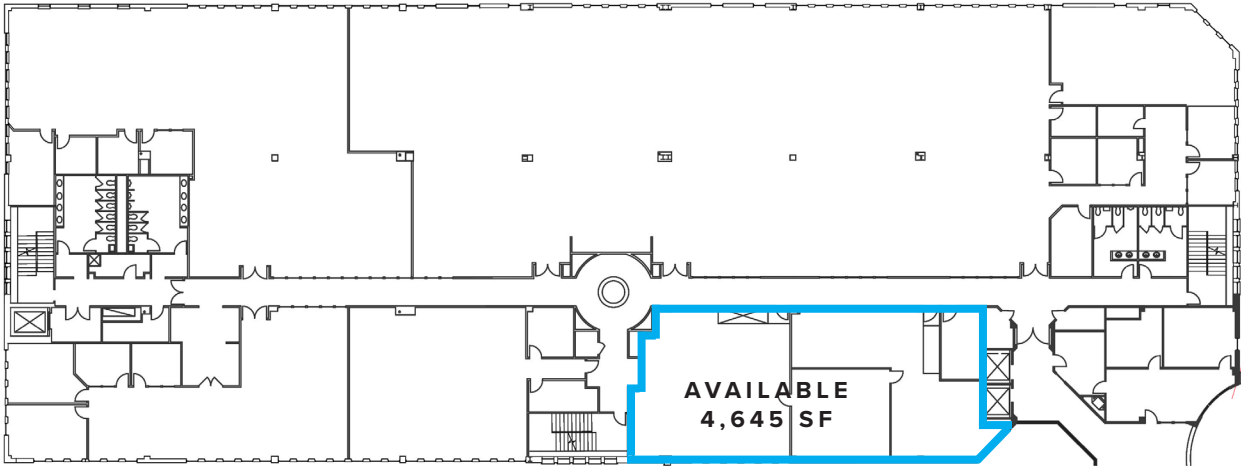
FITNESS CENTER

FLOOR PLANS - WHITE WING - 700 PRIDES CROSSING

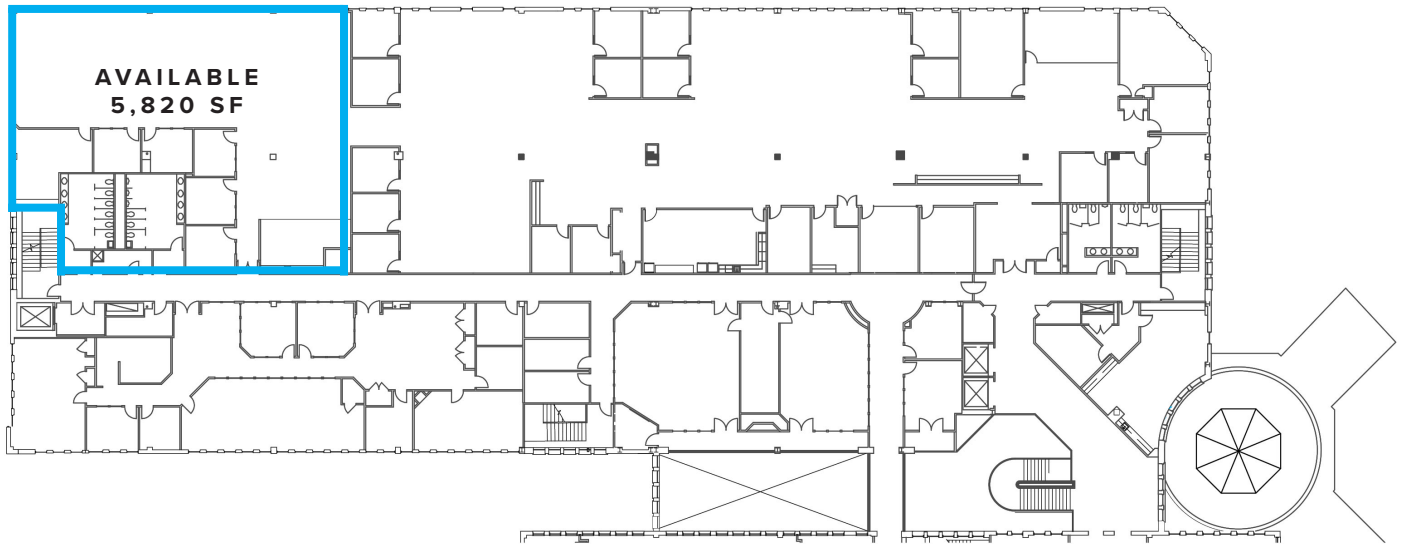
1ST FLOOR - 17,686 SF AVAILABLE



2ND FLOOR - 4,645 SF AVAILABLE



3RD FLOOR - 5,820 SF AVAILABLE

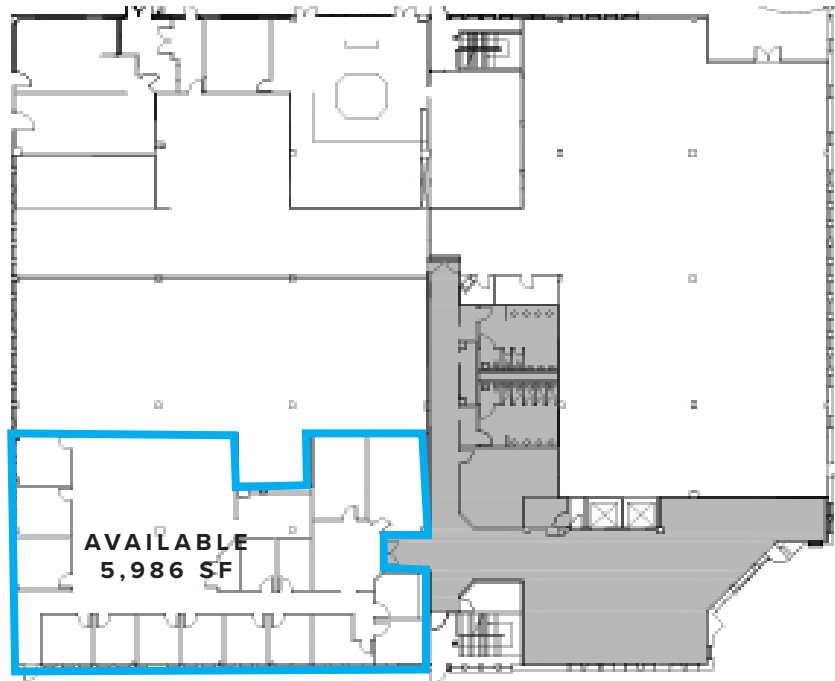




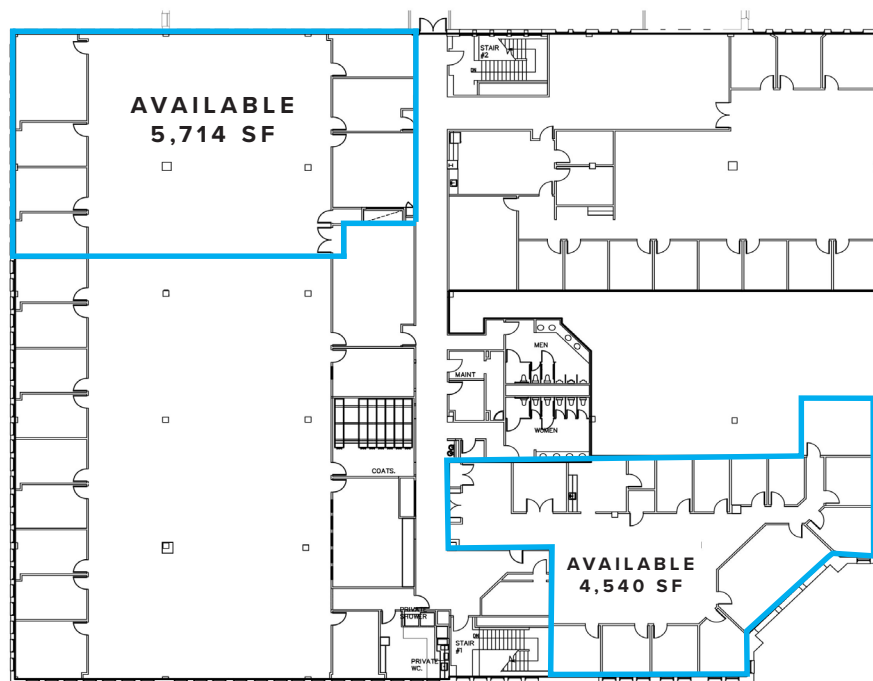
IRON HILL CORPORATE CENTER

FLOOR PLAN - RED WING - 750 PRIDES CROSSING

1ST FLOOR - 5,986 SF AVAILABLE



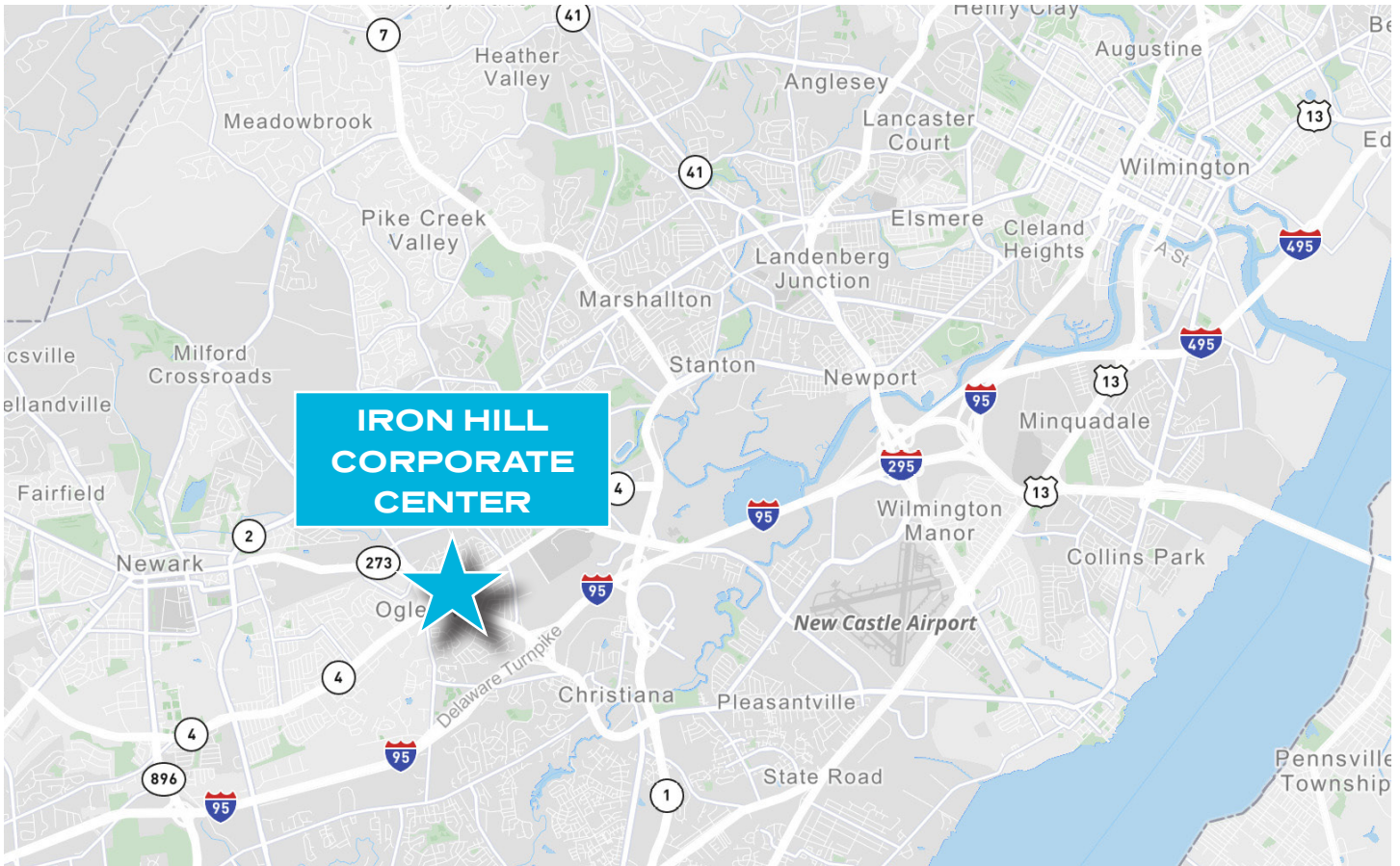
3RD FLOOR - 10,254 SF AVAILABLE





IRON HILL CORPORATE CENTER

700, 750 & 800 PRIDES CROSSING
NEWARK, DELAWARE



PLEASE CONTACT:

CBRE, INC.

3711 Kennett Pike, Suite 210
Wilmington, DE 19807
+302 661 6700
Licensed Real Estate Broker

© 2026 CBRE, Inc. All rights reserved. This information has been obtained from sources believed reliable, but has not been verified for accuracy or completeness. You should conduct a careful, independent investigation of the property and verify all information. Any reliance on this information is solely at your own risk. CBRE and the CBRE logo are service marks of CBRE, Inc. All other marks displayed on this document are the property of their respective owners, and the use of such logos does not imply any affiliation with or endorsement of CBRE. Photos herein are the property of their respective owners. Use of these images without the express written consent of the owner is prohibited.

04-15-26

