

**CENTRAL SHOPS
AT THE RAILYARDS**

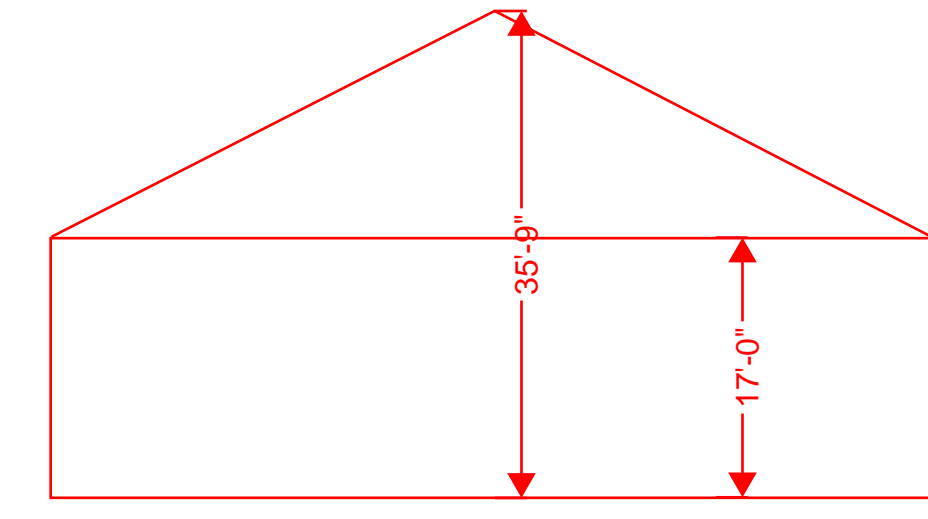
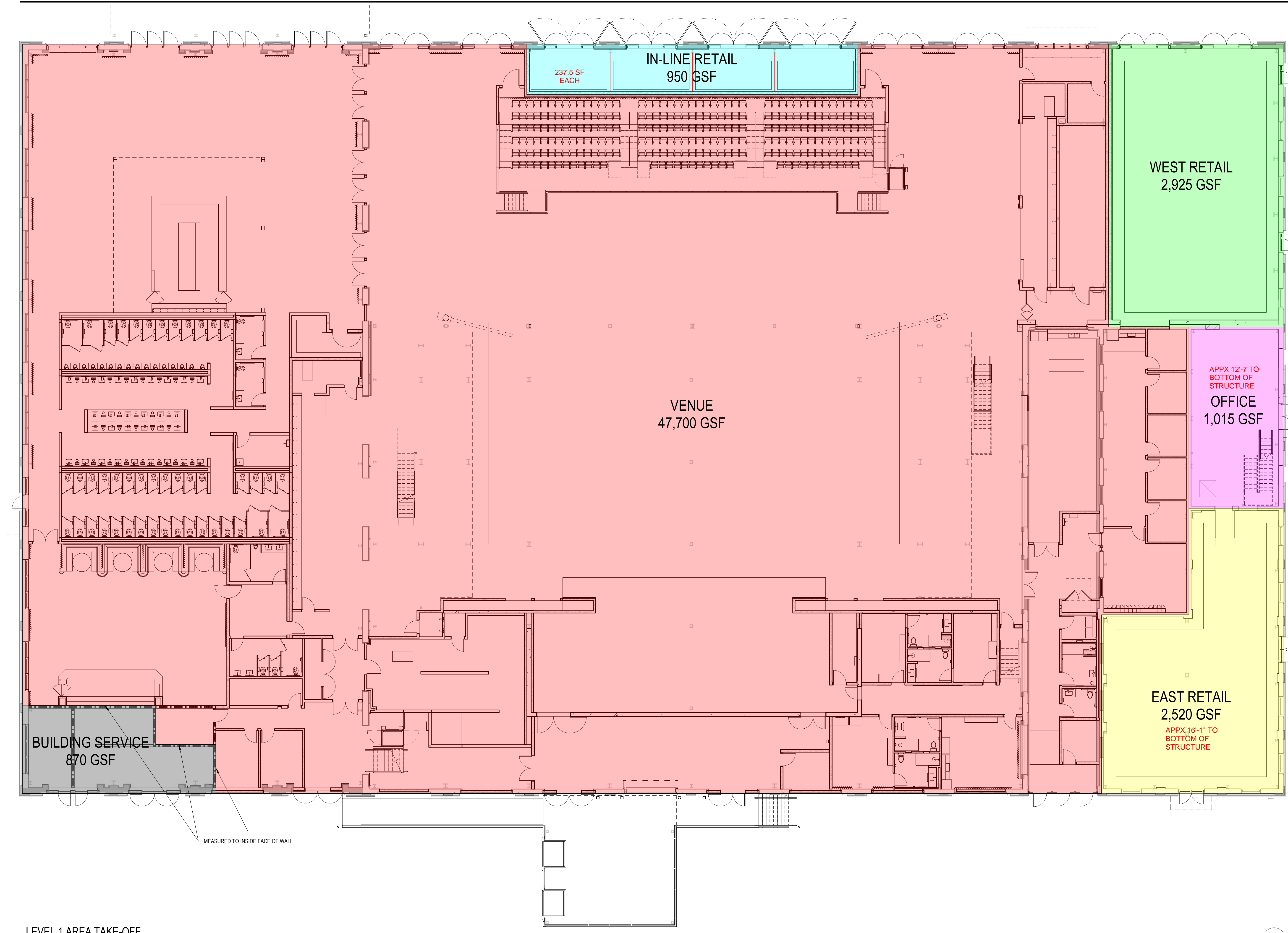
Sacramento, CA 95814

ISSUE: ISSUE FOR PERMIT

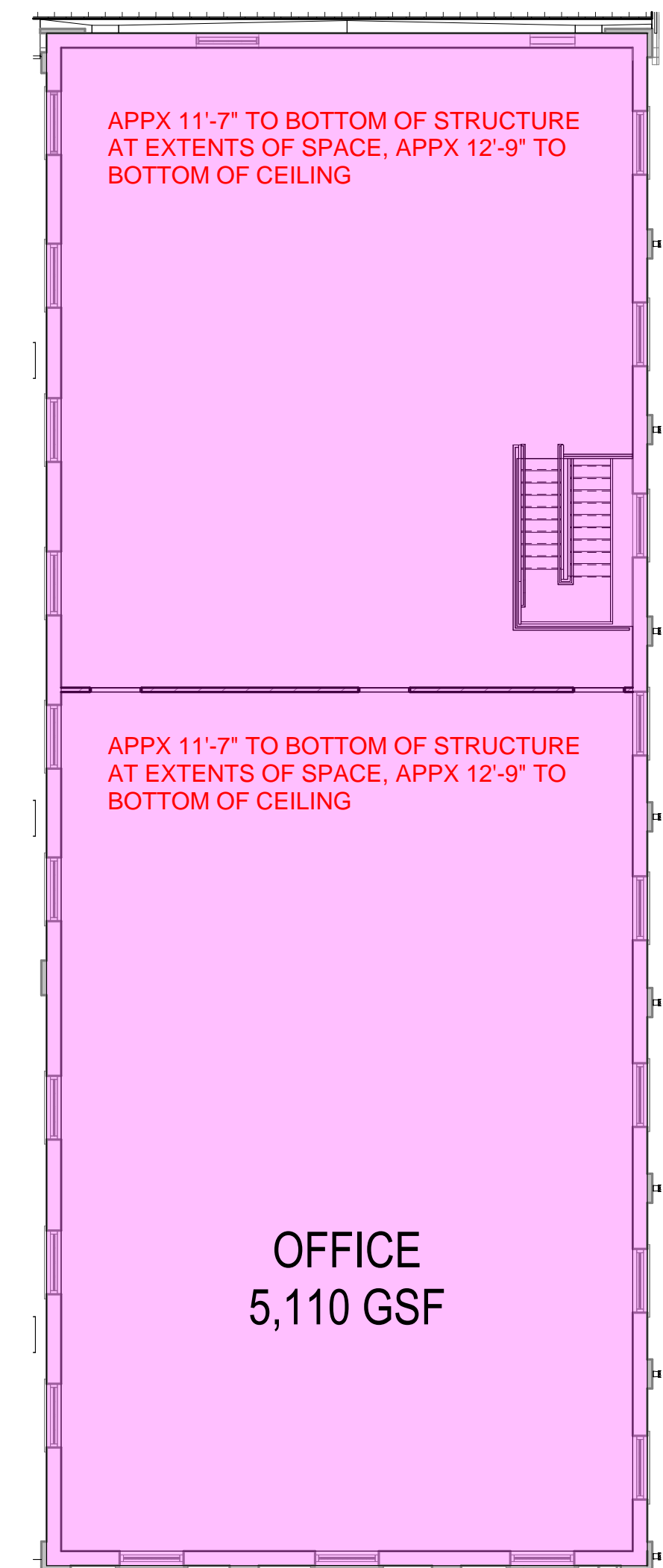
ISSUE DATE: 10.26.22

REVISIONS:

DESCRIPTION	DATE



WEST RETAIL: VAULTED CEILING, BOTTOM OF TRUSS STRUCTURE APPX 17'-0", OVERALL APPX CEILING HEIGHT 35'-9"



APPX 11'-7" TO BOTTOM OF STRUCTURE AT EXTENTS OF SPACE, APPX 12'-9" TO BOTTOM OF CEILING

APPX 11'-7" TO BOTTOM OF STRUCTURE AT EXTENTS OF SPACE, APPX 12'-9" TO BOTTOM OF CEILING

OFFICE
5,110 GSF

LEVEL 1 AREA TAKE-OFF
3/32" = 1'-0"

1 LEVEL 2 AREA TAKE-OFF
3/32" = 1'-0"

2 KEY PLAN

AREA TAKE-OFF NOTES

- GIVEN THE HISTORIC PAINT SHOPS CONSTRUCTION IN THE LATE 1800S, SOME OF THE EXISTING BUILDING INCONSISTENCIES ARE NOT FULLY CAPTURED IN THE WORKING MODEL AND INSTEAD ARE IDEALIZED TO ALLOW FOR CONSTRUCTABILITY AND COORDINATION
- AREAS CALCULATED TO EXTERIOR FACE OF BUILDING, UON
- AREAS THAT SHARE COMMON WALL CALCULATED TO CENTERLINE OF WALL, UON

LEGEND

- BUILDING SERVICE
- IN-LINE RETAIL
- WEST RETAIL
- EAST RETAIL
- OFFICE
- VENUE

SCALE: 3/32" = 1'-0"

PROJECT NUMBER: 19431.00
DRAWN BY: CM
CHECKED BY: AL

STAMP:



AREA TAKE-OFFS

SHEET NUMBER:

C1