

OFFICE SPACE FOR LEASE

# LOS ANGELES CORPORATE CENTER



OWNED BY

EXCLUSIVELY LEASED BY

1200 CORPORATE CENTER DR, MONTEREY PARK, CA

OMNINET

**km** Kidder  
Mathews



*We are pleased to present premier Class A office space, featuring expansive floor plates and energy star certification for superior efficiency and sustainability.*



**LARGE  
FLOOR  
PLATES**



**ENERGY  
STAR  
CERTIFIED**



**EV  
CHARGING  
STATIONS**



**4/1,000  
FREE  
PARKING**

Professionally owned and managed by  
Omninet Capital

Class A office space with a corporate identity

Direct access to the 10, 710, and 60 freeways

Easy access to mass transit

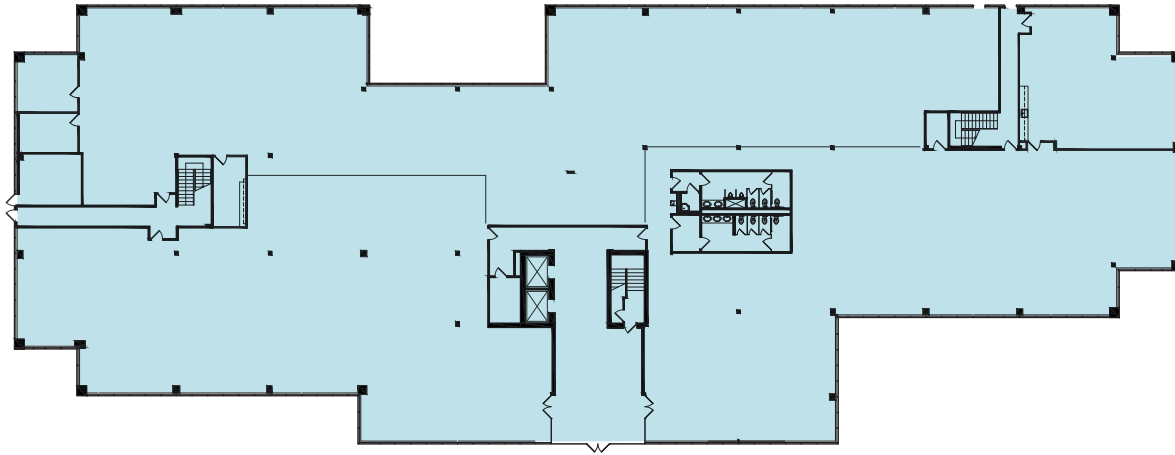
Centrally located to numerous restaurants and  
retail amenities

SUITE AVAILABILITY

Suite	RSF	Lease Rate (FSG)	Description
SUITE 100	26,619 RSF	\$3.25/RSF per month	Full ground floor opportunity.
SUITE 300	29,183 RSF	\$3.25/RSF per month	Entire floor available.



# SUITE 100



*26,619 SF*

AVAILABLE

*\$3.25/RSF*

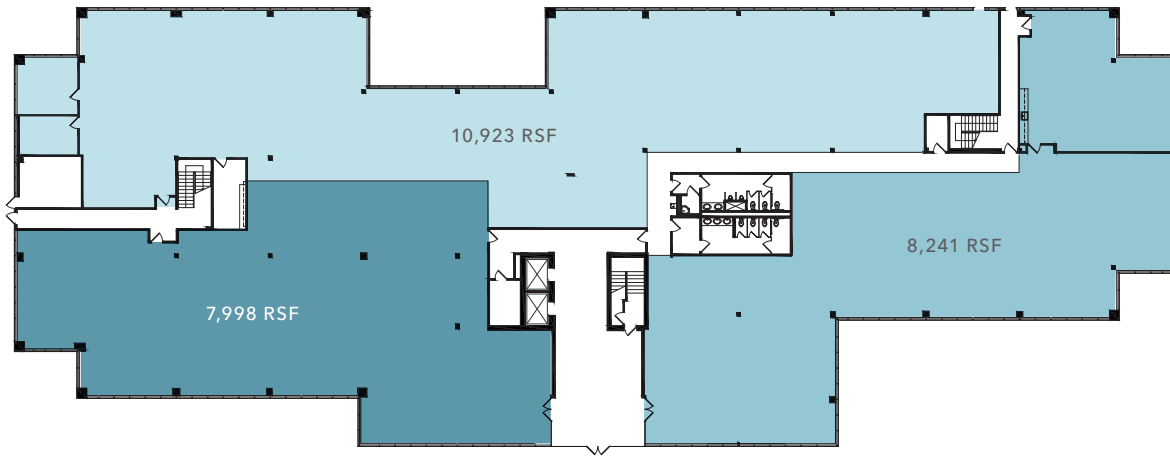
LEASE RATE (PER MONTH FSG)

*NOW*

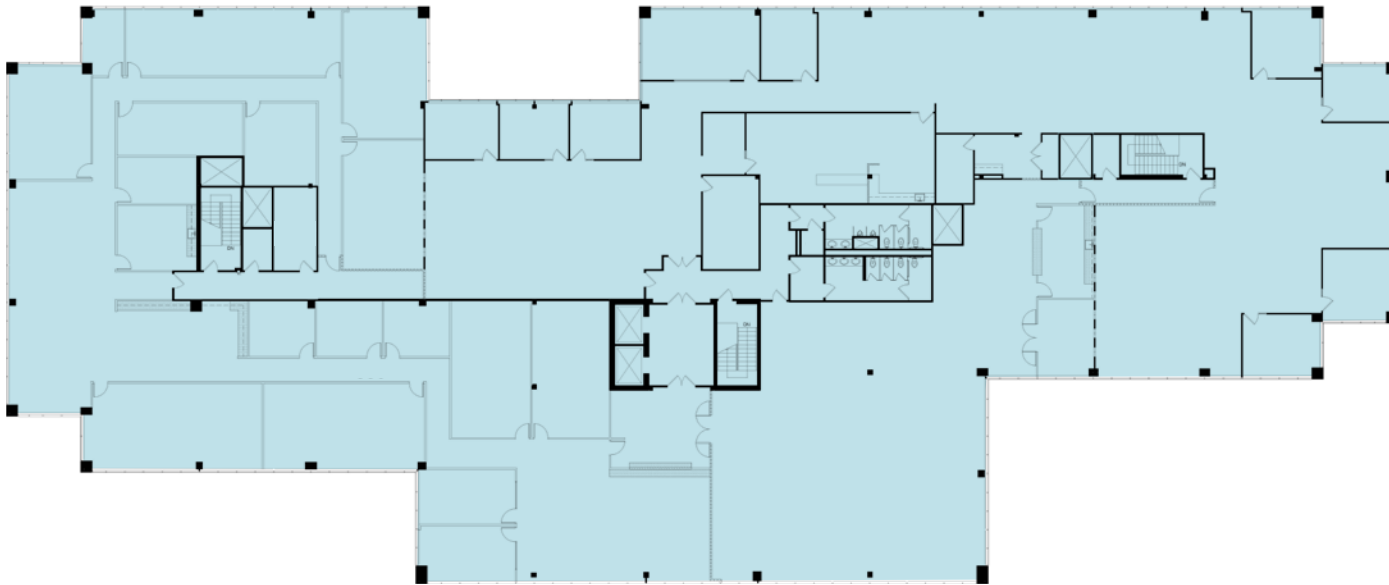
AVAILABLE

Full ground floor opportunity.

## CONCEPTUAL DEMISING PLAN



# SUITE 300



*29,183 SF*

AVAILABLE

*\$3.25/RSF*

LEASE RATE (PER MONTH FSG)

*NOW*

AVAILABLE

Entire floor available.





# 1200 CORPORATE CENTER DR

*Owned by*

**OMNINET**

*Exclusively leased by*

LINDA LEE, CCIM  
626.873.1802  
linda.lee@kidder.com  
LIC N° 01278768

BILL BOYD  
626.873.1801  
bill.boyd@kidder.com  
LIC N° 00816177

SCOTT UNGER  
626.873.1803  
scott.unger@kidder.com  
LIC N° 01855517

KIDDER.COM

This information supplied herein is from sources we deem reliable. It is provided without any representation, warranty, or guarantee, expressed or implied as to its accuracy. Prospective Buyer or Tenant should conduct an independent investigation and verification of all matters deemed to be material, including, but not limited to, statements of income and expenses. Consult your attorney, accountant, or other professional advisor. All Kidder Mathews designs are the sole property of Kidder Mathews. Branded materials and layouts are not authorized for use by any other firm or person.

**km** Kidder  
Mathews