

394

MOTHER GASTON BOULEVARD
BROWNSVILLE, BROOKLYN



MERIDIAN
RETAIL LEASING

394

MOTHER GASTON BOULEVARD

BROWNSVILLE, BROOKLYN

Between Pitkin & Belmont Avenues

SPACES FOR LEASE



PROPERTY INFORMATION

APPROXIMATE SIZE

Ground Floor: 12,000 SF (Retail)
 Second Floor: 8,000 SF (Retail)
 Third Floor: 5,000 SF (Community Facility)
 Fourth Floor: 5,000 SF + 5,000 SF Terrace (Community Facility)

ASKING RENT

Upon Request

POSSESSION

Immediate

TERM

Negotiable

FRONTAGE

100 FT

COMMENTS

- Rare opportunity offering approx. 35,000 SF across four floors allowing tenants to secure a dominant presence
- Located within a densely populated area perfect for medical, educational, nonprofit, or institutional users
- In close proximity to multiple public transportation lines
- Surrounded by a growing mix of local retailers, national operators, and new residential

NEIGHBORS

Family Dollar • Sister's Beauty Salon
 • Dolar Health & Wellness • Primary Care Doctor Brooklyn • Planet Fitness • CTown Supermarket

TRANSPORTATION



NOAM AZIZ

Senior Director
 212.468.5984
 naziz@meridiancapital.com

JOAQUIN CARRILLO

Associate
 212.468.5919
 jcarrillo@meridiancapital.com

BRADLEY BENILEVI

Associate
 212.468.5967
 bbenilevi@meridiancapital.com



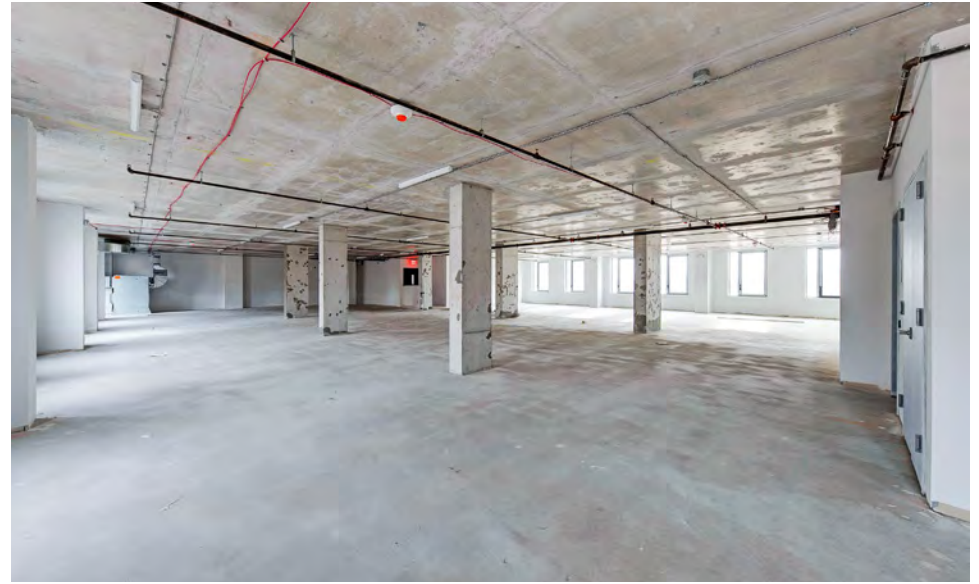
MERIDIAN
 RETAIL LEASING

All information supplied is from sources deemed reliable and is furnished subject to errors, omissions, modifications, removal of the listing from sale or lease, and to any listing conditions, including the rates and manner of payment of commissions for particular offerings imposed by Meridian Capital Group. This information may include estimates and projections prepared by Meridian Capital Group with respect to future events, and these future events may or may not actually occur. Such estimates and projections reflect various assumptions concerning anticipated results. While Meridian Capital Group believes these assumptions are reasonable, there can be no assurance that any of these estimates and projections will be correct. Therefore, actual results may vary materially from these estimates and projections. Any square footage dimensions set forth are approximate.

394 MOTHER GASTON BOULEVARD

BROWNSVILLE, BROOKLYN | Between Pitkin and Belmont Avenues

SPACES FOR LEASE



INTERIOR | SECOND FLOOR

NOAM AZIZ
Senior Director
212.468.5984
naziz@meridiancapital.com

JOAQUIN CARRILLO
Associate
212.468.5919
jcarrillo@meridiancapital.com

BRADLEY BENILEVI
Associate
212.468.5967
bbenilevi@meridiancapital.com



MERIDIAN
RETAIL LEASING

All information supplied is from sources deemed reliable and is furnished subject to errors, omissions, modifications, removal of the listing from sale or lease, and to any listing conditions, including the rates and manner of payment of commissions for particular offerings imposed by Meridian Capital Group. This information may include estimates and projections prepared by Meridian Capital Group with respect to future events, and these future events may or may not actually occur. Such estimates and projections reflect various assumptions concerning anticipated results. While Meridian Capital Group believes these assumptions are reasonable, there can be no assurance that any of these estimates and projections will be correct. Therefore, actual results may vary materially from these estimates and projections. Any square footage dimensions set forth are approximate.

394 MOTHER GASTON BOULEVARD

BROWNSVILLE, BROOKLYN | Between Pitkin and Belmont Avenues

SPACES FOR LEASE



INTERIOR | THIRD FLOOR

NOAM AZIZ
Senior Director
212.468.5984
naziz@meridiancapital.com

JOAQUIN CARRILLO
Associate
212.468.5919
jcarrillo@meridiancapital.com

BRADLEY BENILEVI
Associate
212.468.5967
bbenilevi@meridiancapital.com



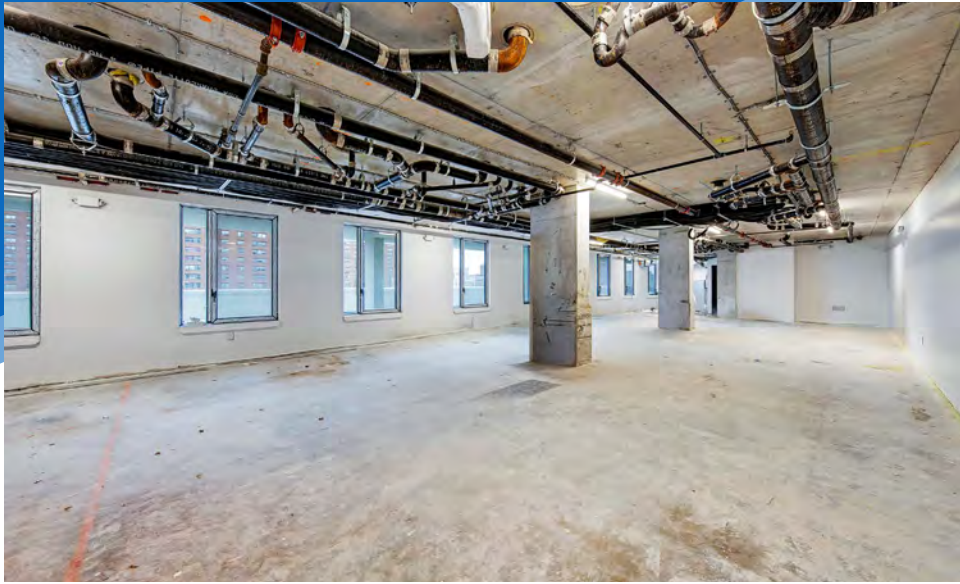
MERIDIAN
RETAIL LEASING

All information supplied is from sources deemed reliable and is furnished subject to errors, omissions, modifications, removal of the listing from sale or lease, and to any listing conditions, including the rates and manner of payment of commissions for particular offerings imposed by Meridian Capital Group. This information may include estimates and projections prepared by Meridian Capital Group with respect to future events, and these future events may or may not actually occur. Such estimates and projections reflect various assumptions concerning anticipated results. While Meridian Capital Group believes these assumptions are reasonable, there can be no assurance that any of these estimates and projections will be correct. Therefore, actual results may vary materially from these estimates and projections. Any square footage dimensions set forth are approximate.

394 MOTHER GASTON BOULEVARD

BROWNSVILLE, BROOKLYN | Between Pitkin and Belmont Avenues

SPACES FOR LEASE



INTERIOR | FOURTH FLOOR

NOAM AZIZ
Senior Director
212.468.5984
naziz@meridiancapital.com

JOAQUIN CARRILLO
Associate
212.468.5919
jcarrillo@meridiancapital.com

BRADLEY BENILEVI
Associate
212.468.5967
bbenilevi@meridiancapital.com



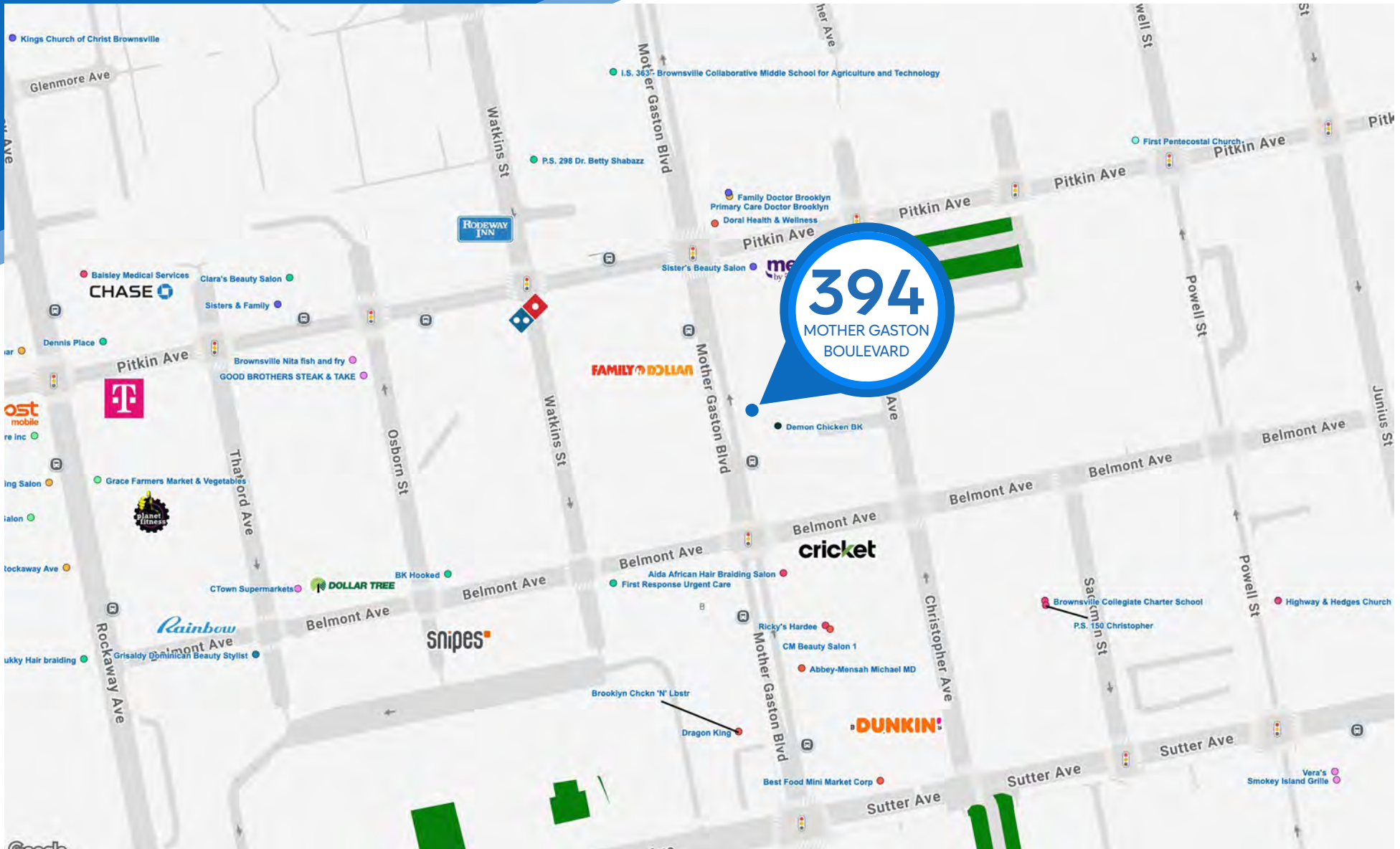
MERIDIAN
RETAIL LEASING

All information supplied is from sources deemed reliable and is furnished subject to errors, omissions, modifications, removal of the listing from sale or lease, and to any listing conditions, including the rates and manner of payment of commissions for particular offerings imposed by Meridian Capital Group. This information may include estimates and projections prepared by Meridian Capital Group with respect to future events, and these future events may or may not actually occur. Such estimates and projections reflect various assumptions concerning anticipated results. While Meridian Capital Group believes these assumptions are reasonable, there can be no assurance that any of these estimates and projections will be correct. Therefore, actual results may vary materially from these estimates and projections. Any square footage dimensions set forth are approximate.

394 MOTHER GASTON BOULEVARD

BROWNSVILLE, BROOKLYN | Between Pitkin and Belmont Avenues

SPACES FOR LEASE



NEIGHBORS

NOAM AZIZ
Senior Director
212.468.5984
naziz@meridiancapital.com

JOAQUIN CARRILLO
Associate
212.468.5919
jcarrillo@meridiancapital.com

BRADLEY BENILEVI
Associate
212.468.5967
bbenilevi@meridiancapital.com



MERIDIAN
RETAIL LEASING

All information supplied is from sources deemed reliable and is furnished subject to errors, omissions, modifications, removal of the listing from sale or lease, and to any listing conditions, including the rates and manner of payment of commissions for particular offerings imposed by Meridian Capital Group. This information may include estimates and projections prepared by Meridian Capital Group with respect to future events, and these future events may or may not actually occur. Such estimates and projections reflect various assumptions concerning anticipated results. While Meridian Capital Group believes these assumptions are reasonable, there can be no assurance that any of these estimates and projections will be correct. Therefore, actual results may vary materially from these estimates and projections. Any square footage dimensions set forth are approximate.