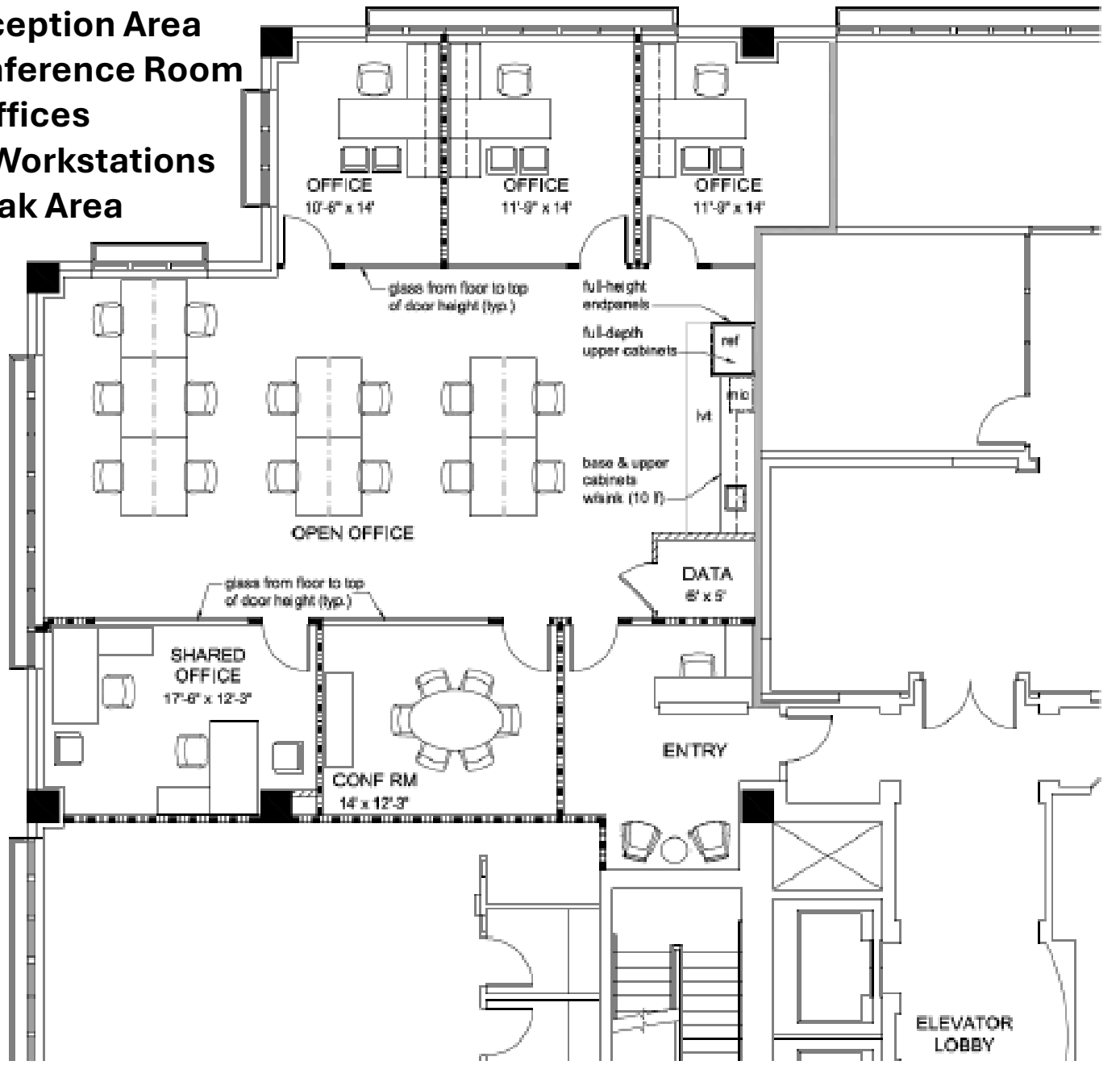


Class A Office Space Available 450 Carillon

**Turnkey
Move In Ready!**

- Suite 240
- 2,532 RSF
- Reception Area
- Conference Room
- 4 Offices
- 14 Workstations
- Break Area



For More Information Please Contact:
Michael S. Talmadge
mtalmadge@echelonre.com
727.214.4650



www.eresproperties.com