

17400

IRVINE BLVD

Professional Medical Opportunity in Tustin, California



FOR LEASE

OFFERING ADVISORS

Lee & Associates, Inc. - Irvine
9838 Research Drive
Irvine, California 92618
Lee-Irvine.com

Mia Pham

Senior Vice President
CalDRE 01875144
949.790.3129
mpham@leeirvine.com

Eric Darnell

Senior Vice President
CalDRE 01888743
949.460.3681
edarnell@leeirvine.com

 **LEE &
ASSOCIATES**
COMMERCIAL REAL ESTATE SERVICES



PROPERTY HIGHLIGHTS

- Single Story Medical Building
- Direct Suite Entrance
- Easy Access and Convenient Parking
- Professionally Managed
- Centrally Located With Many Local Amenities
- Short Distance to Old Town Tustin
- Flexible Suite Layout
- Renovations Underway
- Ample Parking
- Short Distance to 5 & 55 Freeway

AVAILABILITY

Unit	Size	Lease Rate	CAM Fee*
A	990 SF	\$3.00/SF MG	\$0.35/Month
N	1,200 SF	\$3.00/SF MG	\$0.35/Month

**Includes common area utilities. Tenant responsible for separately metered utilities.*

 **LEE &
ASSOCIATES**
COMMERCIAL REAL ESTATE SERVICES

Mia Pham
Senior Vice President
CalDRE 01875144
949.790.3129
mpham@leeirvine.com

Eric Darnell
Senior Vice President
CalDRE 01888743
949.460.3681
edarnell@leeirvine.com

No warranty or representation is made to the accuracy of the foregoing information. Terms of sale or lease and availability are subject to change or withdrawal without notice.

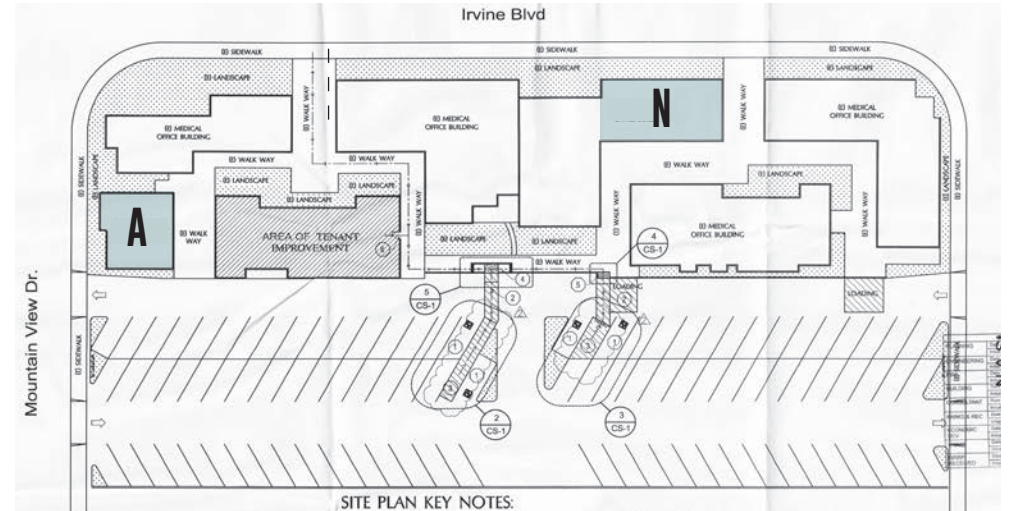
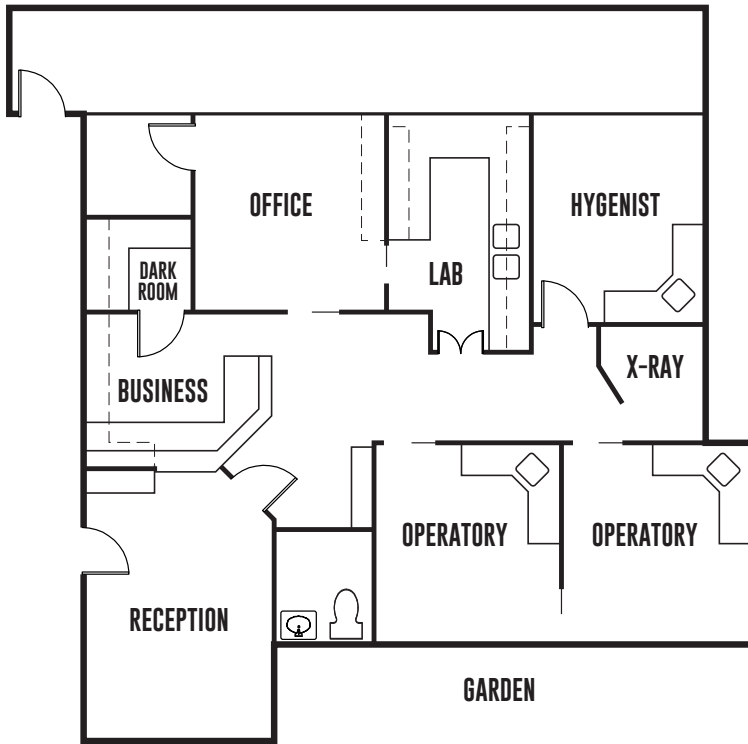
17400

IRVINE BLVD

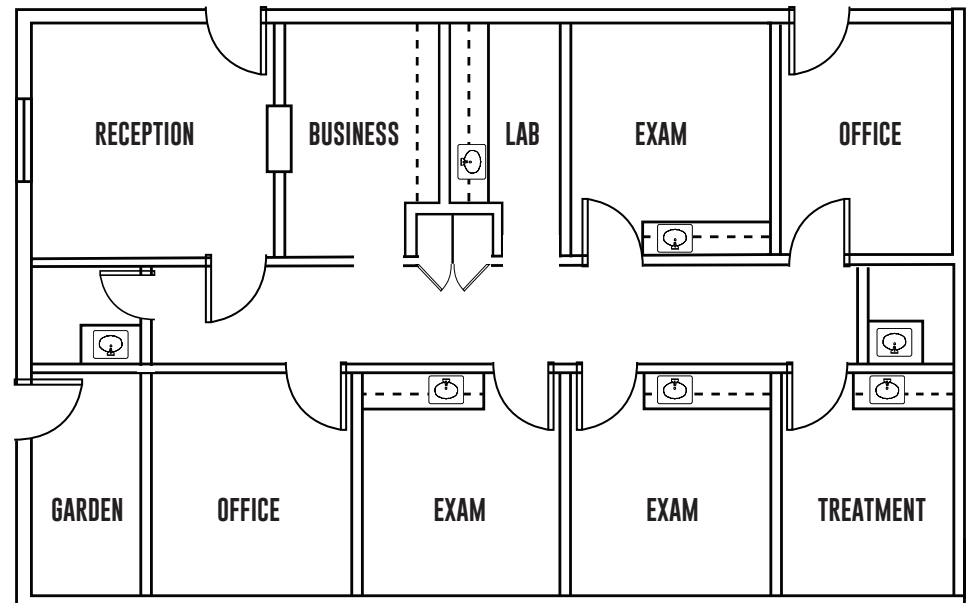
Professional Medical Opportunity in Tustin, California

FLOOR PLAN

SUITE A



SUITE N



LEE & ASSOCIATES
COMMERCIAL REAL ESTATE SERVICES

Mia Pham
Senior Vice President
CalDRE 01875144
949.790.3129
mpham@leeirvine.com

Eric Darnell
Senior Vice President
CalDRE 01888743
949.460.3681
edarnell@leeirvine.com

AERIAL MAP

