



Northridge MEDICAL CENTER



FOR LEASE | 864 RSF & 1,047 RSF

HIGH-IMAGE MEDICAL OFFICE SUITES | ACROSS FROM DIGNITY HEALTH -NORTHRIDGE HOSPITAL MEDICAL CENTER

18433 ROSCOE BOULEVARD | NORTHRIDGE, CA 91325

MATT SREDEN

Executive Vice President
661.755.6654
msreden@spectrumcre.com
CA DRE Lic. #01907628

YAIR HAIMOFF, SIOR

Executive Managing Director
818.203.5429
yhaimoff@spectrumcre.com
CA DRE Lic. #01414758

No warranty, express or implied, is made as to the accuracy of the information contained herein. This information is submitted subject to errors, omission, change of price, rental or other conditions, withdrawal without notice, and is subject to any special listing conditions imposed by our principals. Cooperating brokers, buyers, tenants and other parties who receive this document should not rely on it, but should use it as a starting point of analysis, and should independently confirm the accuracy of the information contained herein through a due diligence review of the books, records, files and documents that constitute reliable sources of the information described herein. Spectrum Commercial Real Estate, Inc. CA DRE #02042805

SPECTRUM
COMMERCIAL REAL ESTATE, INC.
spectrumcre.com | 818.252.9900

FOR LEASE

18433 Roscoe Boulevard | Northridge, CA

FEATURES

HIGHLIGHTS

PROPERTY HIGHLIGHTS

- ◆ High-Image Medical Office Building
- ◆ Available for Immediate Occupancy
- ◆ Efficiently Sized Suites
- ◆ Reserved & Unreserved Parking Available; On-Site Parking Attendant
- ◆ Elevator Served
- ◆ Dual Monument Signage *Call for Details

LOCATION HIGHLIGHTS

- ◆ Prime Northridge Location with Excellent Demographics
- ◆ Across the Street from Dignity Health - Northridge Hospital Medical Center & UCLA Health Northridge General Surgery
- ◆ High Traffic Counts with Excellent Visibility & Frontage Along Two Major Thoroughfares
- ◆ Minutes from Metrolink, Northridge Fashion Center, Cal State University Northridge (CSUN) Health Clubs, Daycare Centers, Restaurants, Costco & Shopping
- ◆ Close Proximity to the Ventura 101, San Diego 405, & CA State Route 118 Freeways



MATT SREDEN

Executive Vice President
661.755.6654
msreden@spectrumcre.com
CA DRE Lic. #01907628

YAIR HAIMOFF, SIOR

Executive Managing Director
818.203.5429
yhaimoff@spectrumcre.com
CA DRE Lic. #01414758

No warranty, express or implied, is made as to the accuracy of the information contained herein. This information is submitted subject to errors, omission, change of price, rental or other conditions, withdrawal without notice, and is subject to any special listing conditions imposed by our principals. Cooperating brokers, buyers, tenants and other parties who receive this document should not rely on it, but should use it as a starting point of analysis, and should independently confirm the accuracy of the information contained herein through a due diligence review of the books, records, files and documents that constitute reliable sources of the information described herein. Spectrum Commercial Real Estate, Inc. CA DRE #02042805

SPECTRUM
COMMERCIAL REAL ESTATE, INC.

spectrumcre.com | 818.252.9900

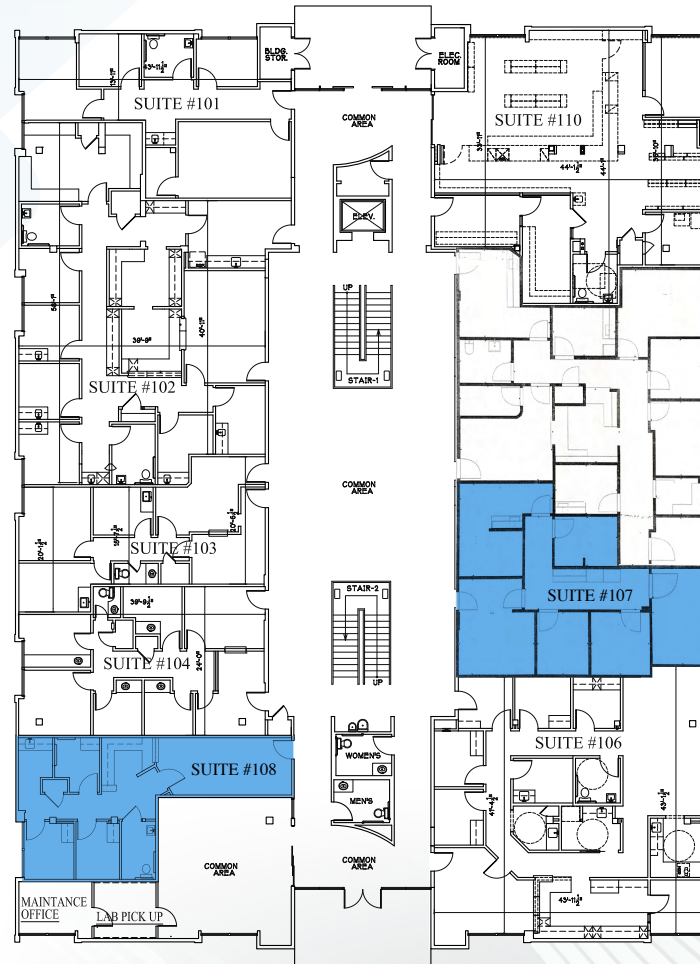
FOR LEASE

18433 Roscoe Boulevard | Northridge, CA

AVAILABLE SUITES

1st FLOOR

SUITE 108 | 864 RSF



SUITE 107 | 1,047 RSF



MATT SREDEN

Executive Vice President
661.755.6654
msreden@spectrumcre.com
CA DRE Lic. #01907628

YAIR HAIMOFF, SIOR

Executive Managing Director
818.203.5429
yhaimoff@spectrumcre.com
CA DRE Lic. #01414758

No warranty, express or implied, is made as to the accuracy of the information contained herein. This information is submitted subject to errors, omission, change of price, rental or other conditions, withdrawal without notice, and is subject to any special listing conditions imposed by our principals. Cooperating brokers, buyers, tenants and other parties who receive this document should not rely on it, but should use it as a starting point of analysis, and should independently confirm the accuracy of the information contained herein through a due diligence review of the books, records, files and documents that constitute reliable sources of the information described herein. Spectrum Commercial Real Estate, Inc. CA DRE #02042805

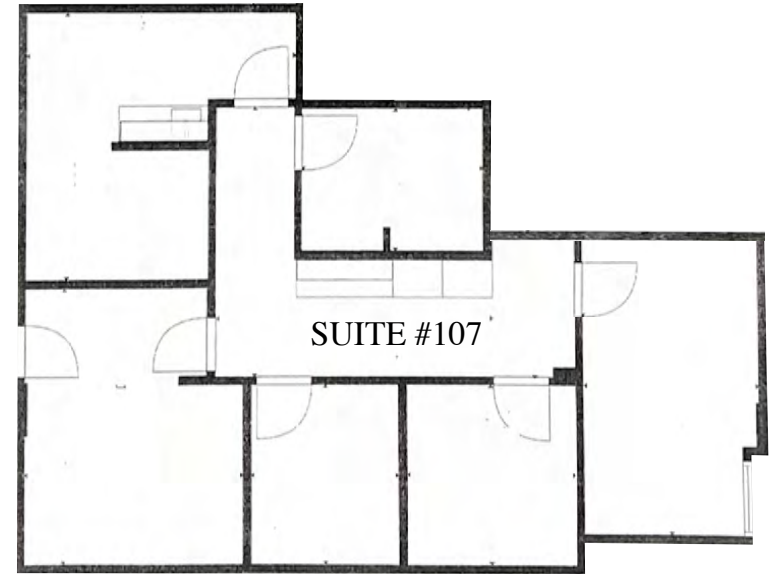
SPECTRUM
COMMERCIAL REAL ESTATE, INC.

spectrumcre.com | 818.252.9900

18433 Roscoe Boulevard | Northridge, CA

SUITE # SIZE (RSF) HIGHLIGHTS

107 1,047 1st Floor Medical office with four (4) exam rooms (1 w/ sink), one (2) office, receptionist area + lobby.



MATT SREDEN
Executive Vice President
661.755.6654
msreden@spectrumcre.com
CA DRE Lic. #01907628

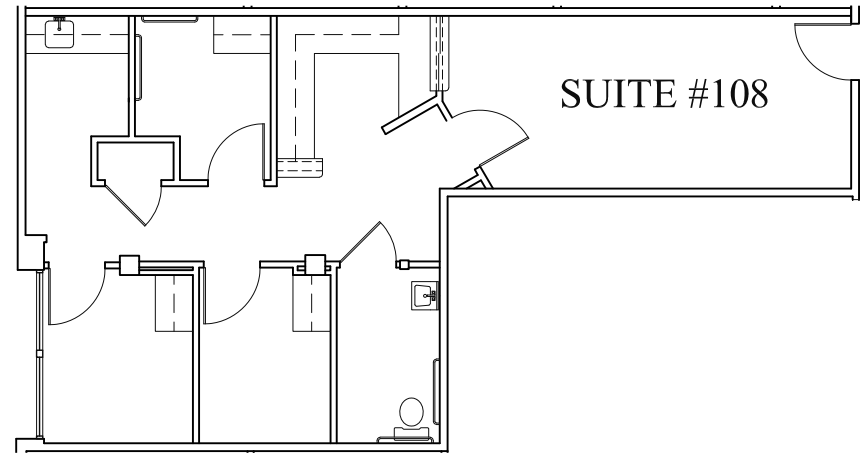
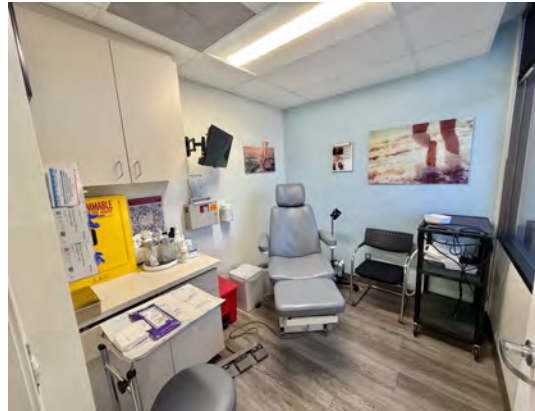
YAIR HAIMOFF, SIOR
Executive Managing Director
818.203.5429
yhaimoff@spectrumcre.com
CA DRE Lic. #01414758

No warranty, express or implied, is made as to the accuracy of the information contained herein. This information is submitted subject to errors, omission, change of price, rental or other conditions, withdrawal without notice, and is subject to any special listing conditions imposed by our principals. Cooperating vokers, buyers, tenants and other parties who receive this document should not rely on it, but should use it as a starting point of analysis, and should independently confirm the accuracy of the information contained herein through a due diligence review of the books, records, files and documents that constitute reliable sources of the information described herein. Spectrum Commercial Real Estate, Inc. CA DRE #02042805

18433 Roscoe Boulevard | Northridge, CA

SUITE # SIZE (RSF) HIGHLIGHTS

108 864 1st Floor Medical office; three (3) exam rooms, nurse / lab station, receptionist area + lobby, closet and a private restroom.



MATT SREDEN
Executive Vice President
661.755.6654
msreden@spectrumcre.com
CA DRE Lic. #01907628

YAIR HAIMOFF, SIOR
Executive Managing Director
818.203.5429
yhaimoff@spectrumcre.com
CA DRE Lic. #01414758

No warranty, express or implied, is made as to the accuracy of the information contained herein. This information is submitted subject to errors, omission, change of price, rental or other conditions, withdrawal without notice, and is subject to any special listing conditions imposed by our principals. Cooperating vokers, buyers, tenants and other parties who receive this document should not rely on it, but should use it as a starting point of analysis, and should independently confirm the accuracy of the information contained herein through a due diligence review of the books, records, files and documents that constitute reliable sources of the information described herein. Spectrum Commercial Real Estate, Inc. CA DRE #02042805

FOR LEASE

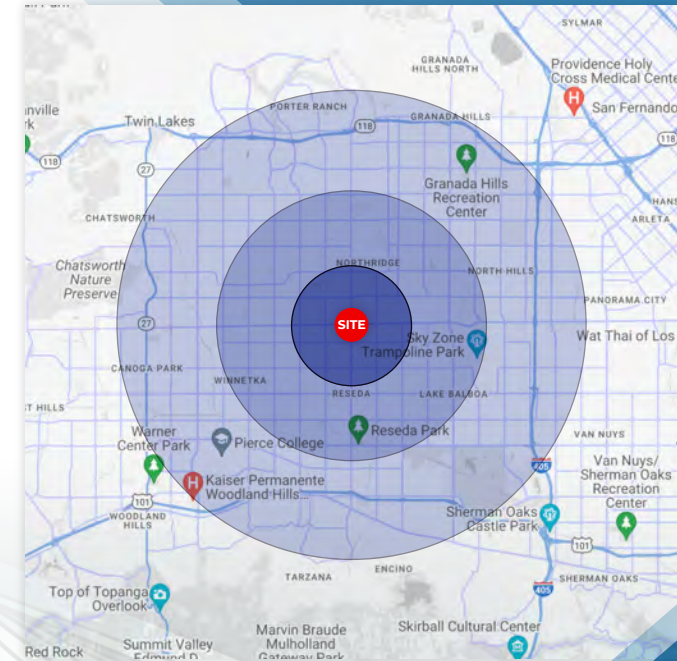
18433 Roscoe Boulevard | Northridge, CA

DEMOGRAPHICS

	1 MILE	3 MILES	5 MILES
POPULATION	32,591	233,006	638,432
MEDIAN AGE	34.6	37.3	36.8
AVG HHI	\$80,631	\$93,912	\$95,706
MEDIAN HHI	\$60,221	\$71,505	\$72,553
TOTAL # OF BUSINESS	1,433	9,160	29,247
DAYTIME POPULATION	9,734	90,843	264,878
OWNER OCCUPIED	4,430 45.0%	42,661 55.3%	106,403 49.3%
RENTER OCCUPIED	5,409 55.0%	34,430 44.7%	109,224 50.7%
HIGH SCHOOL GRADS	5,496 25.1%	36,503 22.6%	97,012 22.0%
ASSOCIATE DEGREE	1,493 6.8%	12,090 7.5%	30,646 6.9%
BACHELORS DEGREE	4,208 19.2%	34,701 21.5%	98,041 22.2%
GRADUATE DEGREE	1,473 6.7%	15,143 9.4%	44,537 10.1%

DRIVE TIME

DESTINATIONS	DISTANCE
Van Nuys Airport	10 Minute Drive
Burbank Airport	22 Minute Drive
West Los Angeles	22 Minute Drive
Downtown Los Angeles	35 Minute Drive
Los Angeles Int. Airport	35 Minute Drive
Port of Los Angeles	50 Minute Drive



CLOSE PROXIMITY TO NEARBY HOSPITALS

 Dignity Health Northridge Hospital Medical Center	 PROVIDENCE Tarzana Medical Center	 Mission Community Hospital	 Kaiser Permanente Panorama City	 ENCINO HOSPITAL MEDICAL CENTER	 Kaiser Permanente Woodland Hills	 PROVIDENCE Holy Cross Medical Center	 West Hills Hospital
409	249	145	218	150	280	377	228
HOSPITAL BEDS	HOSPITAL BEDS	HOSPITAL BEDS	HOSPITAL BEDS	HOSPITAL BEDS	HOSPITAL BEDS	HOSPITAL BEDS	HOSPITAL BEDS
0	3.8	4.5	6.3	6.6	6.8	6.8	7.0
MILES	MILES	MILES	MILES	MILES	MILES	MILES	MILES

MATT SREDEN

Executive Vice President
 661.755.6654
 msreden@spectrumcre.com
 CA DRE Lic. #01907628

YAIR HAIMOFF, SIOR

Executive Managing Director
 818.203.5429
 yhaimoff@spectrumcre.com
 CA DRE Lic. #01414758

No warranty, express or implied, is made as to the accuracy of the information contained herein. This information is submitted subject to errors, omission, change of price, rental or other conditions, withdrawal without notice, and is subject to any special listing conditions imposed by our principals. Cooperating brokers, buyers, tenants and other parties who receive this document should not rely on it, but should use it as a starting point of analysis, and should independently confirm the accuracy of the information contained herein through a due diligence review of the books, records, files and documents that constitute reliable sources of the information described herein. Spectrum Commercial Real Estate, Inc. CA DRE #02042805

SPECTRUM
 COMMERCIAL REAL ESTATE, INC.

spectrumcre.com | 818.252.9900



CSUN

CALIFORNIA
STATE UNIVERSITY
NORTHRIDGE



**SUBJECT
PROPERTY**



Dignity Health
Northridge Hospital
Medical Center



Dignity Health
Northridge Hospital
Medical Center



MATT SREDEN

Executive Vice President
661.755.6654
msreden@spectrumcre.com
CA DRE Lic. #01907628

YAIR HAIMOFF, SIOR

Executive Managing Director
818.203.5429
yhaimoff@spectrumcre.com
CA DRE Lic. #01414758

No warranty, express or implied, is made as to the accuracy of the information contained herein. This information is submitted subject to errors, omission, change of price, rental or other conditions, withdrawal without notice, and is subject to any special listing conditions imposed by our principals. Cooperating vokers, buyers, tenants and other parties who receive this document should not rely on it, but should use it as a starting point of analysis, and should independently confirm the accuracy of the information contained herein through a due diligence review of the books, records, files and documents that constitute reliable sources of the information described herein. Spectrum Commercial Real Estate, Inc. CA DRE #02042805

SPECTRUM
COMMERCIAL REAL ESTATE, INC.

spectrumcre.com | 818.252.9900