

For Lease

55 Metcalfe Street

Ottawa, ON



Contact

Stephanie Lui*

Associate Vice President

613 323 7883

Stephanie.Lui@jll.com





327,000
Total SF



\$20.53
Additional Rent
(2025)



16
Floors



3-level parking
garage and
on-site car wash



Close proximity
to future LRT
station



Bicycle
parking

Features

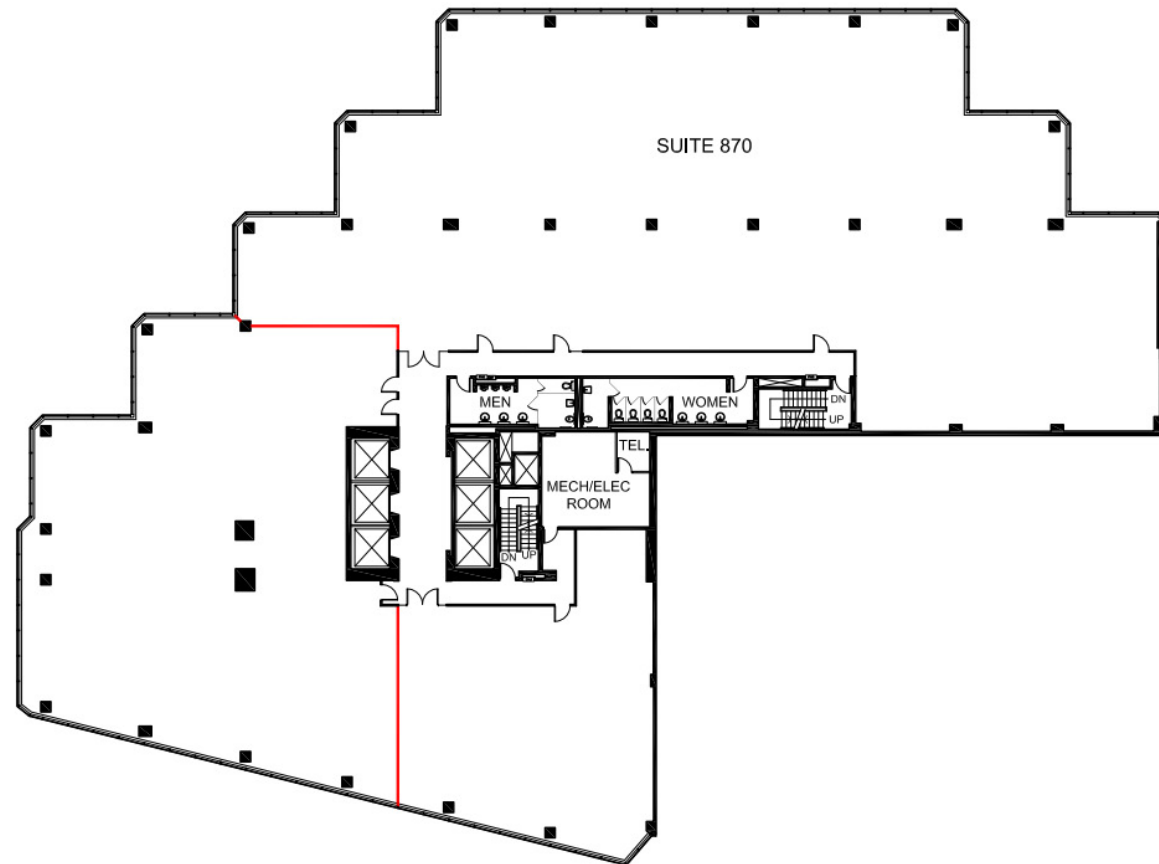
- 24-hour, on-site security
- Private on-site shower facilities
- On-site tenant-exclusive conference centre
- On-site cafeteria with catering services
- Awarded LEED v4.1 Platinum in 2019
- Ideally located in the heart of Ottawa's business and cultural district at the corner of Queen Street and Metcalfe Street
- Convenient access to several retail, dining and hotel amenities
- Within walking distance to Parliament Hill, the National Arts Centre, Rideau Centre (shopping mall), City Hall and the Court House



Suite 870

Suite 870: 4,628 SF

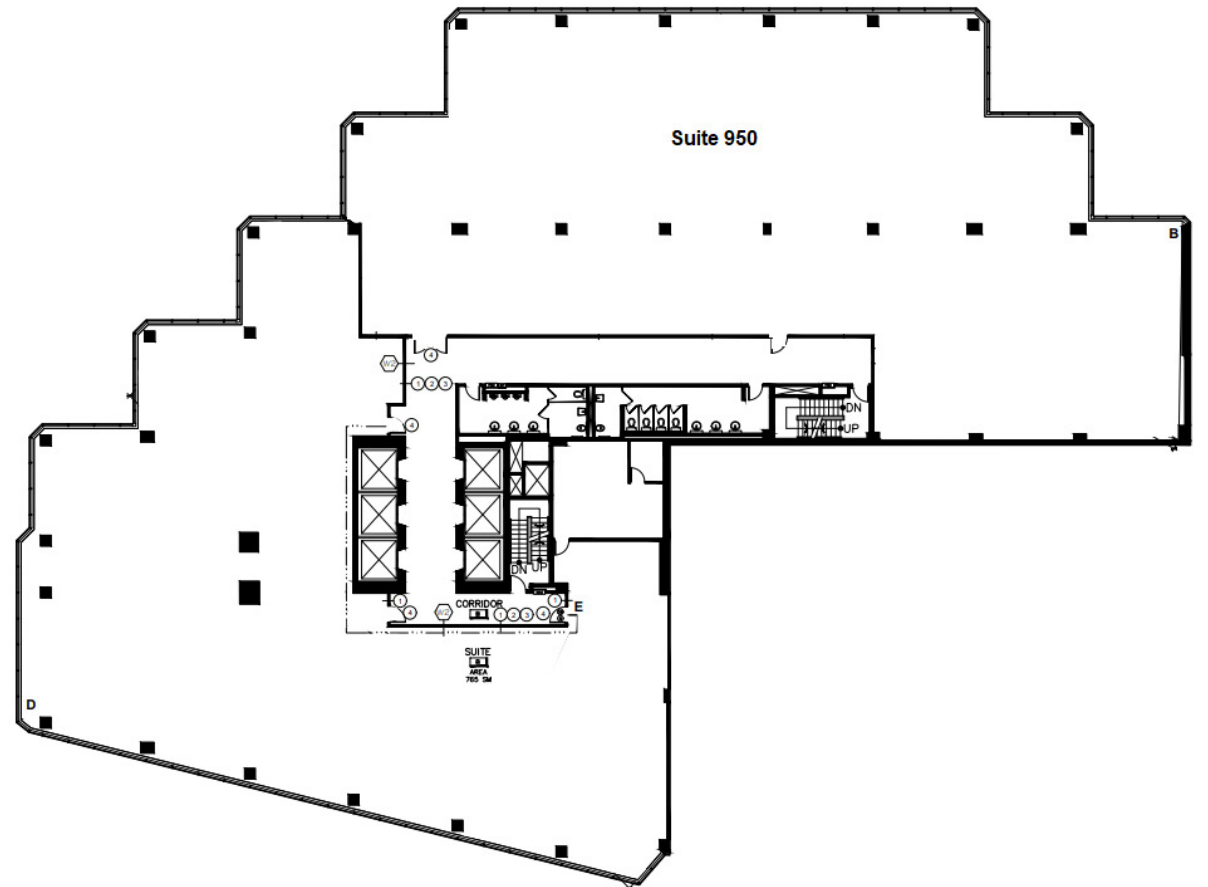
- Base building condition with new ceiling



Suite 950

Suite 950: 11,836 SF

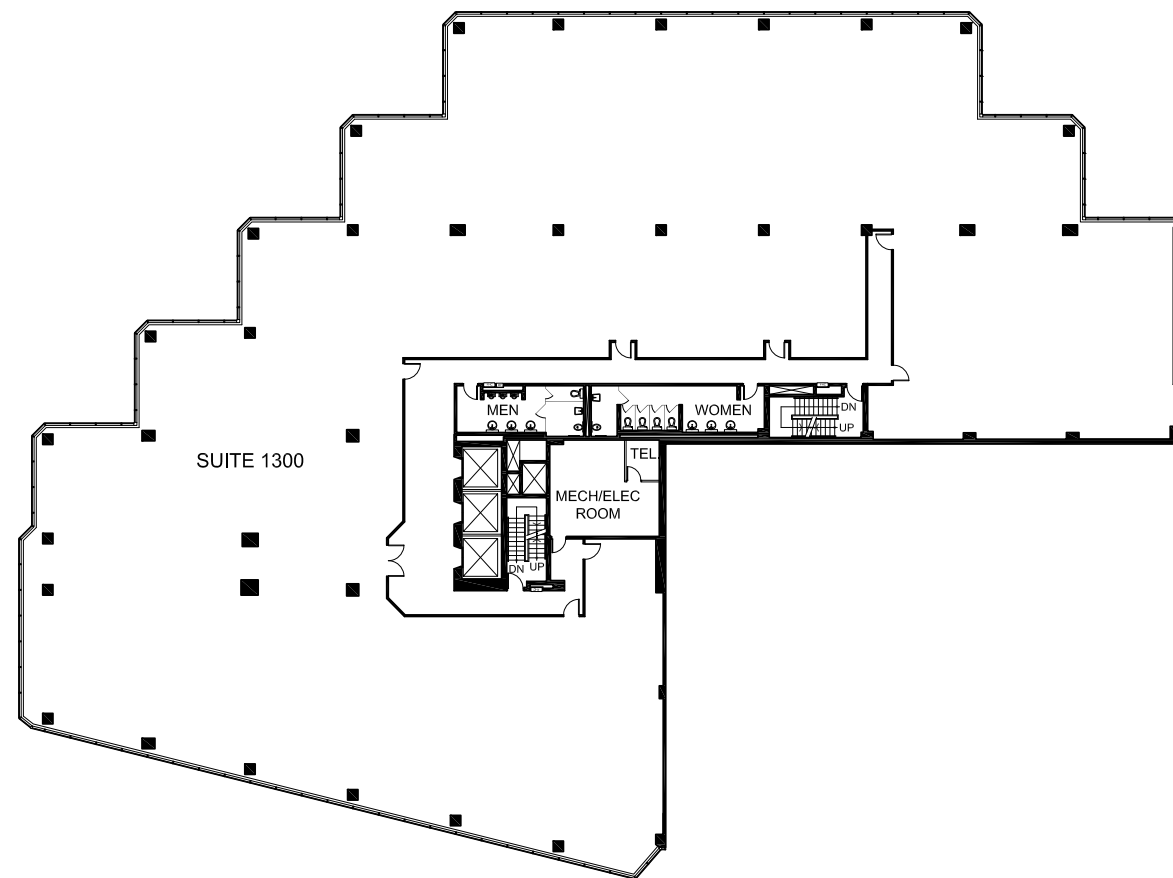
- Suite available in Q2 of 2024



Suite 1300

Suite 1300: 21,447 SF

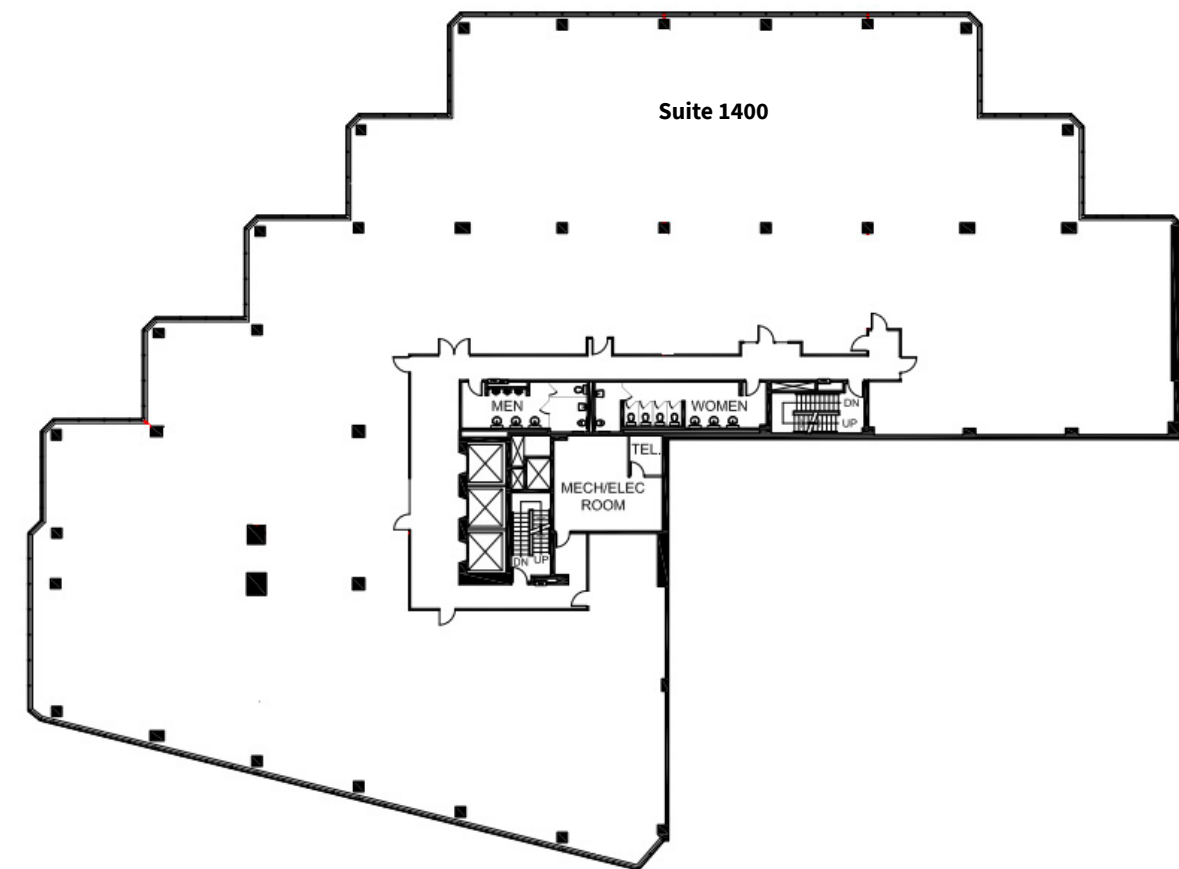
- Full floor opportunity
- Contiguous with Suite 1400 for 42,885 Rentable SF



Suite 1400

Suite 1400: 21,438 SF

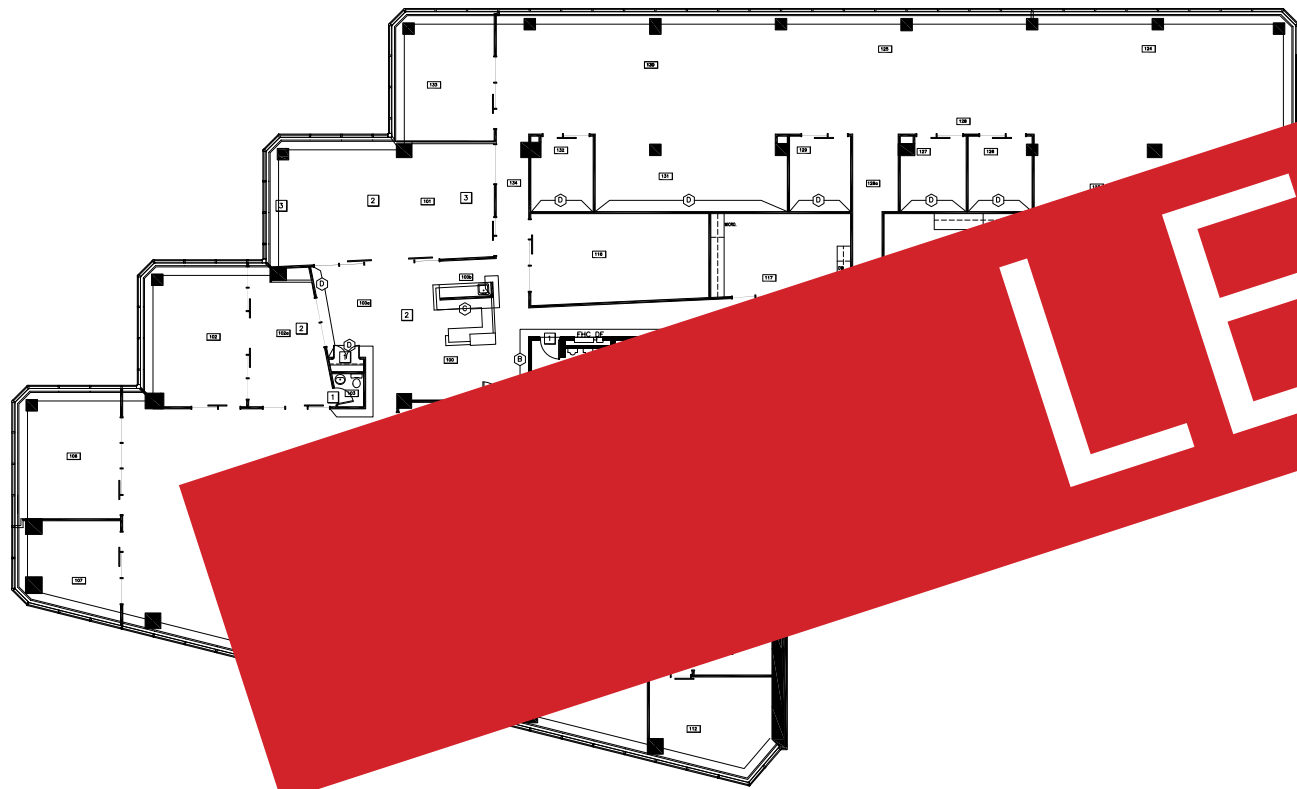
- Full floor opportunity
- Base-building condition with new ceiling standards
- Contiguous with Suite 1300 for 42,885 Rentable SF



Suite 1600

Suite 1600: 16,146 SF

- Top floor opportunity
- Panoramic views of Ottawa with unobstructed views of Parliament
- Fully improved space



LEASED

Food

- | | |
|---------------------------|-----------------------------|
| 1. Parliament Pub | 12. Tim Hortons |
| 2. Bridgehead | 13. Sushi Kan 3 |
| 3. Milestones | 14. Eggspectation |
| 4. Metropolitan Brasserie | 15. Tosca |
| 5. Courtyard | 16. Rangoon |
| 6. Sidedoor | 17. Grounded Kitchen |
| 7. Restaurant 18 | 18. Clocktower |
| 8. Chez Lucien | 19. Johnny Farina |
| 9. Bier Markt | 20. Beckta |
| 10. McDonald's | 21. Royal Oak |
| 11. Starbucks | 22. Mamma Teresa Ristorante |




Retail

- | | |
|-----------------------|----------------------|
| 1. Rideau Centre | 5. Chapters |
| 2. The Bay | 6. Apple Store |
| 3. LCBO | 7. Marcello's Market |
| 4. Shoppers Drug Mart | |

Services

1. RBC
2. CIBC
3. Scotiabank
4. TD Bank
5. BMO
6. Bank of Canada

Other

-  Light Rail Station
-  Bus Stop
-  Parking

Driving Times

Ottawa International Airport

25 mins



55 Metcalfe Street

Ottawa, ON

Contact

Stephanie Lui*

Associate Vice President

613 323 7883

Stephanie.Lui@jll.com



*Although information has been obtained from sources deemed reliable, JLL does not make any guarantees, warranties or representations, express or implied, as to the completeness or accuracy as to the information contained herein. Any projections, opinions, assumptions or estimates used are for example only. There may be differences between projected and actual results, and those differences may be material. JLL does not accept any liability for any loss or damage suffered by any party resulting from reliance on this information. If the recipient of this information has signed a confidentiality agreement with JLL regarding this matter, this information is subject to the terms of that agreement. ©2024. Jones Lang LaSalle IP, Inc. All rights reserved. *Sales Representative **Broker*