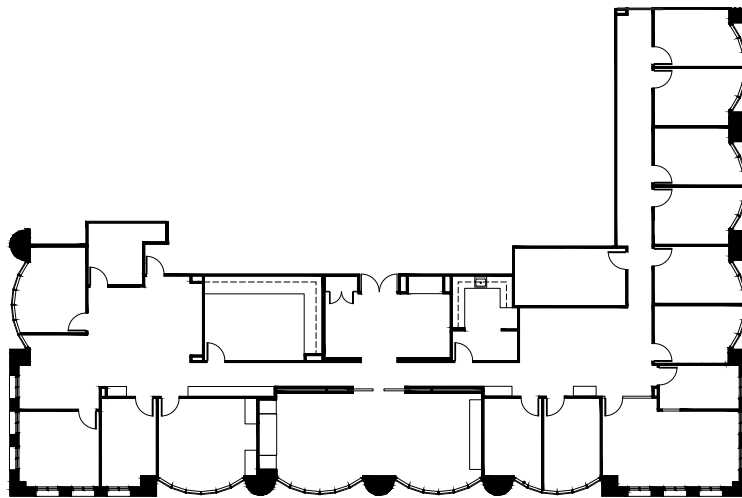


SUITE 2050 | FLOOR PLAN

580
CALIFORNIA

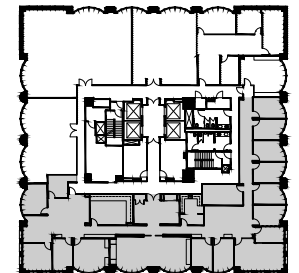
7,160 SQUARE FEET

Kearny Street



California Street

- Available Now
- 12 private offices
- 1 conference room
- 1 large boardroom
- 2 storage rooms
- IT room



FOR LEASING INFORMATION, PLEASE CONTACT OUR TEAM

WES POWELL
+1 415 395 4901
wesley.powell@jll.com
License #: 1702003

CHRISTOPHER HOLLAND
+1 415 354 6917
christopher.holland@jll.com
License #: 1474598

ANN MONTILLA
+1 415 395 7285
ann.montilla@jll.com
License #: 01889254



Jones Lang LaSalle Brokerage, Inc.
Real Estate License #: 01856260