

Drawing A1.3 Legend

- DOOR TAG. REFER TO DOOR/FRAME SCHEDULE, A10.2.
- WINDOW TAG. REFER TO WINDOW TYPES SCHEDULE, A10.2.
- SECTION TAG.
- ELEVATION TAG.
- COLUMN LINE. REFER TO STRUCTURAL DRAWINGS.
- DETAIL TAG.
- WALL TAG.
- NOTE TAG.
- FIRE EXTINGUISHER. REFER TO GENERAL NOTE 'D' ABOVE.

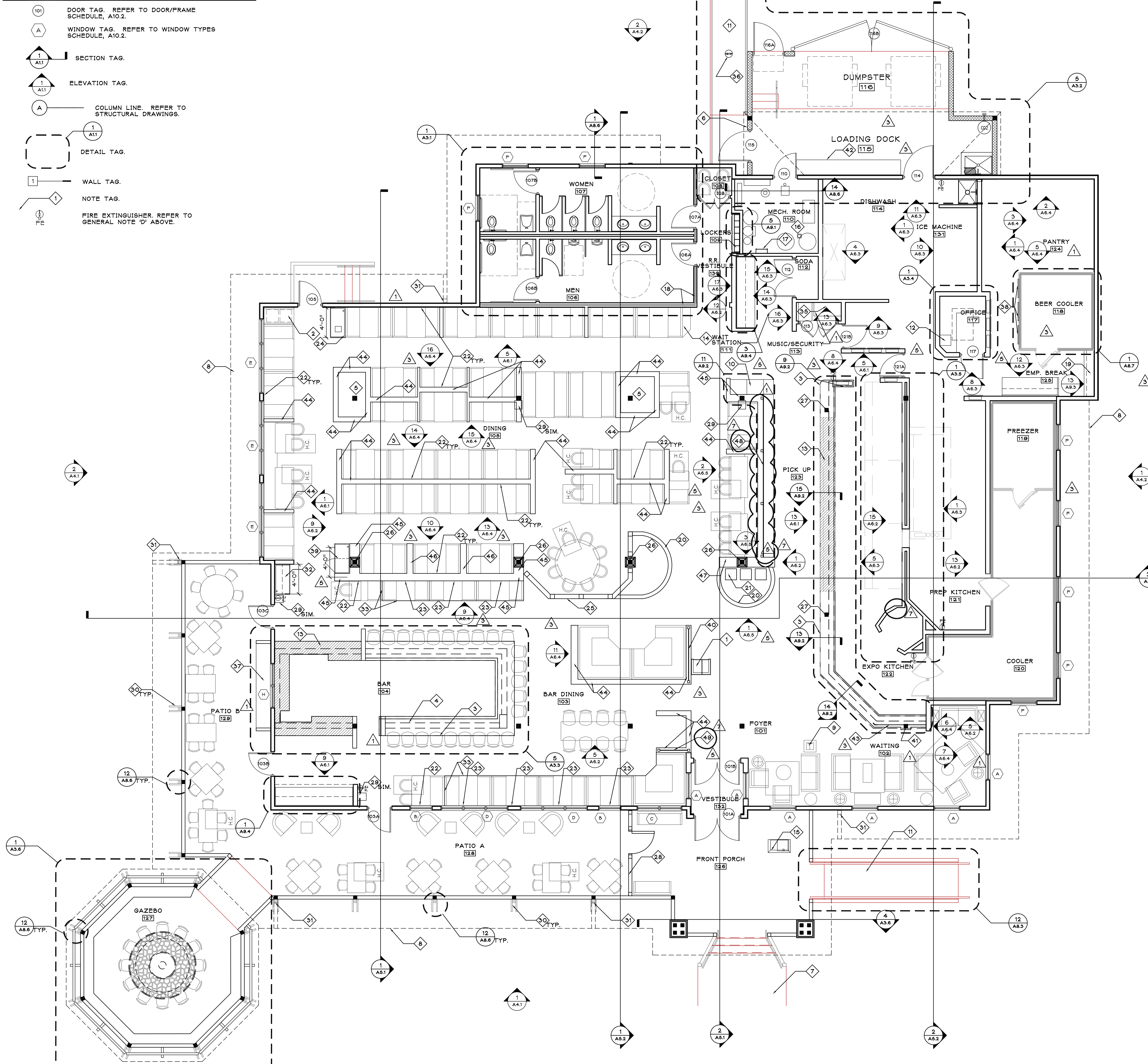
Drawing A1 Series General Notes

- A. DIMENSIONS ARE TO COLUMN LINES, CENTERLINE OF STUD OR FACE OF MASONRY UNLESS OTHERWISE NOTED.
- B. EXTERIOR BUILDING DIMENSIONS ARE TO FACE OF STUD.
- C. ALL GYP. BD. TO BE 5/8" REGULAR GYP. BD. EXCEPT AT "WET AREAS" (BACK OF HOUSE, SERVICE, DISHWASH, KITCHEN, STORAGE, ETC.) WHERE GYP. BD. SHALL BE 5/8" M.R. GYP. BD. AND AT ALL FIRE-RATED ASSEMBLIES WHERE GYP. BD. SHALL BE 5/8" TYPE "X" GYPSUM BOARD.
- D. THE NUMBER OF PORTABLE FIRE EXTINGUISHERS AND LOCATIONS PER APPLICABLE CODE AND LOCAL FIRE MARSHAL. GENERAL CONTRACTOR TO PROVIDE ALLOWANCE FOR FIRE EXTINGUISHERS.
- E. REFER TO SHEETS SP11 AND SP12 FOR FINISH SCHEDULES. REFER TO SHEET A10.1 FOR DOOR AND WINDOW SCHEDULES.
- F. PARTITIONS AND FURRING NOT REQUIRED TO HAVE A ONE HOUR SEPARATION SHALL BE FIRESTOPPED AT THE SUSPENDED CEILING LINE.
- G. GENERAL CONTRACTOR SHALL VERIFY ALL EXISTING CONDITIONS AND DIMENSIONS PRIOR TO THE COMMENCEMENT OF ANY WORK. DISCREPANCIES BETWEEN INFORMATION INDICATED ON THE DRAWINGS AND THE ACTUAL CONDITIONS SHALL BE BROUGHT TO THE ATTENTION OF THE ARCHITECT AND SHALL BE RESOLVED AT HIS DIRECTION PRIOR TO WORK BEING PERFORMED.
- H. GENERAL CONTRACTOR SHALL BE RESPONSIBLE FOR PROTECTING WORK AREAS AND MATERIALS FROM THEFT, VANDALISM, AND OTHER LOSSES.
- I. CONTRACTOR SHALL BE RESPONSIBLE FOR PROTECTING FROM PAINT ALL OTHER AREAS NOT TO RECEIVE PAINT.
- J. GENERAL CONTRACTOR SHALL BE RESPONSIBLE FOR ALL MISC. CLEANING OF WALLS, FIXTURES, AND LIGHTS. CONTRACTOR SHALL ALSO BE RESPONSIBLE FOR PATCHING AND PAINTING TOUCH-UP, DEBRIS REMOVAL, AND ANY OTHER WORK REQUIRED TO LEAVE ALL WORK, INCLUDING WORK PERFORMED UNDER SEPARATE CONTRACTS, HOSPITAL CLEAN AND READY FOR OCCUPANCY.
- K. ALL ROOF DRAINS AND DOWNSPOUTS ARE TO BE TIED TO UNDERGROUND STORM WATER SYSTEM.

Drawing A1.3 Notes

1. HOSTESS STAND. REFER TO DETAIL 9/A8.1.
2. HIGH-CHAIR STORAGE. SEE DETAIL 9/A8.6.
3. LINE OF GRANITE COUNTERTOP.
4. BAR DIE WALL BELOW.
5. PLANTER BUILT BY G.C. ON SITE. REFER TO DETAIL 4/A8.6 AND 8/A8.6.
6. DOOR BELL. SEE ELECTRICAL DRAWINGS.
7. CONCRETE PAVING. SEE CIVIL DRAWINGS.
8. LINE OF ROOF ABOVE.
9. GUEST TELEPHONE. PHONE TO BE ADA COMPLIANT WITH VOLUME CONTROL AND HEARING AID COMPATIBLE. A SIGN OF ACCESSIBILITY TO BE POSTED NEAR PHONE.
10. CONCRETE CURB FOR SAFE. REFER TO DETAIL 12B/A9.2.
11. ADA COMPLIANT RAMP. REFER TO 16/A8.3 AND STRUCTURAL DRAWINGS FOR ADDITIONAL INFORMATION.
12. CONCRETE CURB FOR SAFE. REFER TO DETAIL 6/A3.4.
13. STAINLESS STEEL COUNTER TOP. (HATCHED AREA)
14. SILVERWARE STORAGE CABINET. REFER TO DETAIL 13/A9.1.
15. PRO HOST STATION. REFER TO DETAIL 13/A9.1.
16. MECHANICAL ROOM FLOOR PAINTED P-16.
17. ROOF ACCESS LADDER. REFER TO 6/A8.6.
18. INSULATION FOR SOUND PROOFING AT RESTROOM WALLS.
19. PLASTIC LAMINATE COUNTERTOP. REFER TO DETAIL 13/A9.3.
20. CONCRETE CURB AT PLANTER. REFER TO 9/A8.2 AND 10/A8.2.
21. GRAY CONCRETE PAVERS (THREE TOTAL).
22. TABLE SUPPORT BLOCKING. REFER TO 5/A8.2 AND 6/A8.2.
23. TABLE SUPPORT BLOCKING AT RAISED SEATING. REFER TO 5/A8.2 AND 6/A8.2.
24. P.O.S. STATION. REFER TO 1/A9.1 AND 2/A9.1.
25. REFER TO 7/A8.3 FOR RAILING DETAIL.
26. REFER TO 1/A8.3 FOR COLUMN DETAIL.
27. REFER TO 2/A8.3 AND 3/A8.3 FOR COLUMN DETAIL.
28. REFER TO 5/A8.3 FOR RAILING DETAIL.
29. GAS LIGHT. REFER TO 5/A8.1 AND PLUMBING DRAWINGS.
30. 2X8 P.T. WOOD OUTLOOKERS EACH SIDE OF COLUMN. STAIN ST-3.
31. DOWNSPOUT. REFER TO 12/A8.4.
32. P.O.S. STATION WITH CABINET ABOVE. REFER TO 14/A9.3.
33. LINE OF RAISED DINING PLATFORM. SEE DETAIL 2/A9.3.
34. (2) 3" PVC PIPES THROUGH WALL FOR CLEANING SOLUTION LINES @ 36" A.F.F. INSTALL TIGHT TO SIDE WALLS.
35. 2 TIER SHELF.
36. PROVIDE MAN HOLE IN HANDICAPPED RAMP TO ACCESS EXISTING WATER TAP AS REQUIRED FOR FUTURE MAINTENANCE.
37. BUSSING STATION. REFER TO KITCHEN DRAWINGS.
38. G.C. TO INSTALL OWNER PROVIDED SCHEDULE AND NOTICE BOARDS.
39. P.O.S. STATION. REFER TO 3/A9.3.
40. GLASS PARTITION. REFER TO DETAIL 5/A9.2.
41. REFER TO 14/A8.3 FOR COLUMN DETAIL.
42. 14 FEET LONG STORAGE SHELF ABOVE. REFER TO DETAIL 4/A8.7.
43. GLASS PARTITION. REFER TO DETAIL 6/A9.2.
44. LOW PARTITION WALL WITH SHIPLAP SIDING FINISH. REFER TO DETAIL 2/A8.2.
45. LOW PARTITION WALL WITH SHIPLAP SIDING FINISH. REFER TO DETAIL 3/A8.2.
46. LOW PARTITION WALL WITH SHIPLAP SIDING FINISH BETWEEN BOOTHS. REFER TO DETAIL 4/A8.2.
47. LOW PARTITION WALL WITH FLAGSTONE AND SHIPLAP SIDING FINISH. REFER TO DETAIL 6/A8.7.
48. GLASS PARTITION. REFER TO DETAIL 5/A9.5.
49. GLASS PARTITION. REFER TO DETAIL 7/A9.5.

Copyright : These Drawings are the property of Design Partnership, Inc. and reuse on any other project without written permission will result in legal action.



Seal

DesignPartnership
 Design Partnership, Inc.
 Architects - Planners
 211 East Broad Street Greenville, SC 29601
 T. 864.232.8200 F. 864.232.7587
 www.dpartners.com

Project

Bahama Breeze
 Prototype - Right
 Robinson Township, PA

Project Number	03154
Drawn By	AKK
Checked By	JMT
Date	25 Jul 03
Revisions	
Revision 1	AKK 07 Aug 03 Owner Review Comments
Revision 3	AKK 26 Sep 03 Executive Review Comments
Revision 5	AKK 29 Oct 03 General Revisions
Revision 7	AKK 05 Dec 03 Sketch Revisions

Drawing
Noted Plan



A1.3