



#250-17667 65A Avenue, Cloverdale, BC

FOR LEASE

- ▶ Professionally finished office (Second floor walk up only)
- ▶ Located in Cloverdale Business Park with easy access to Hwy 15
- ▶ Business Park zoning
- ▶ Net lease rate: \$21.00/SF



VALLEY COMMERCIAL TEAM

Gary Niesner*

Sales, Leasing & Investment

604 514 6832

garyn@naicommercial.ca

*Personal Real Estate Corporation

Angie MacDonald*

Sales, Leasing & Investment

604 514 6823

amacdonald@naicommercial.ca

*Personal Real Estate Corporation

NAI Commercial (Langley) Ltd.

20353 64th Avenue, Suite 214

Langley, BC V2Y 1N5

+ 1 604 683 7535

naicommercial.ca

Unit 250

17667 65A Avenue

Cloverdale, BC

Property Summary

Unit Size:	2,814 SF
Net Rent:	\$21.00/SF
Additional Rate:	\$6.80/SF
Gross Rent:	\$6,519 /month + GST
Availability:	Immediate
Zoning:	IB Business Park zoning allows for a variety of uses
Unit Description:	Reception, boardroom, multiple offices, open work area, two washrooms and a full kitchen.

Building Description

Two storey office building with plenty of on-site & street parking and easy access to Highway 15. Tilt-up construction with central A/C and separate HVAC units.

Location

Cloverdale has a population of approximately 160,000, projected to increase to 225,000 within the next 10 years. Cloverdale is located 40 miles to the east of Vancouver and near the Pacific Highway border crossing. Located in the heart of the Fraser Valley, it provides easy access to much of the lower mainland, the interior of the Province and to the northwestern United States.

VALLEY COMMERCIAL TEAM

Gary Niesner*

Sales, Leasing & Investment
604 514 6832
garyn@naicommercial.ca

*Personal Real Estate Corporation

Angie MacDonald*

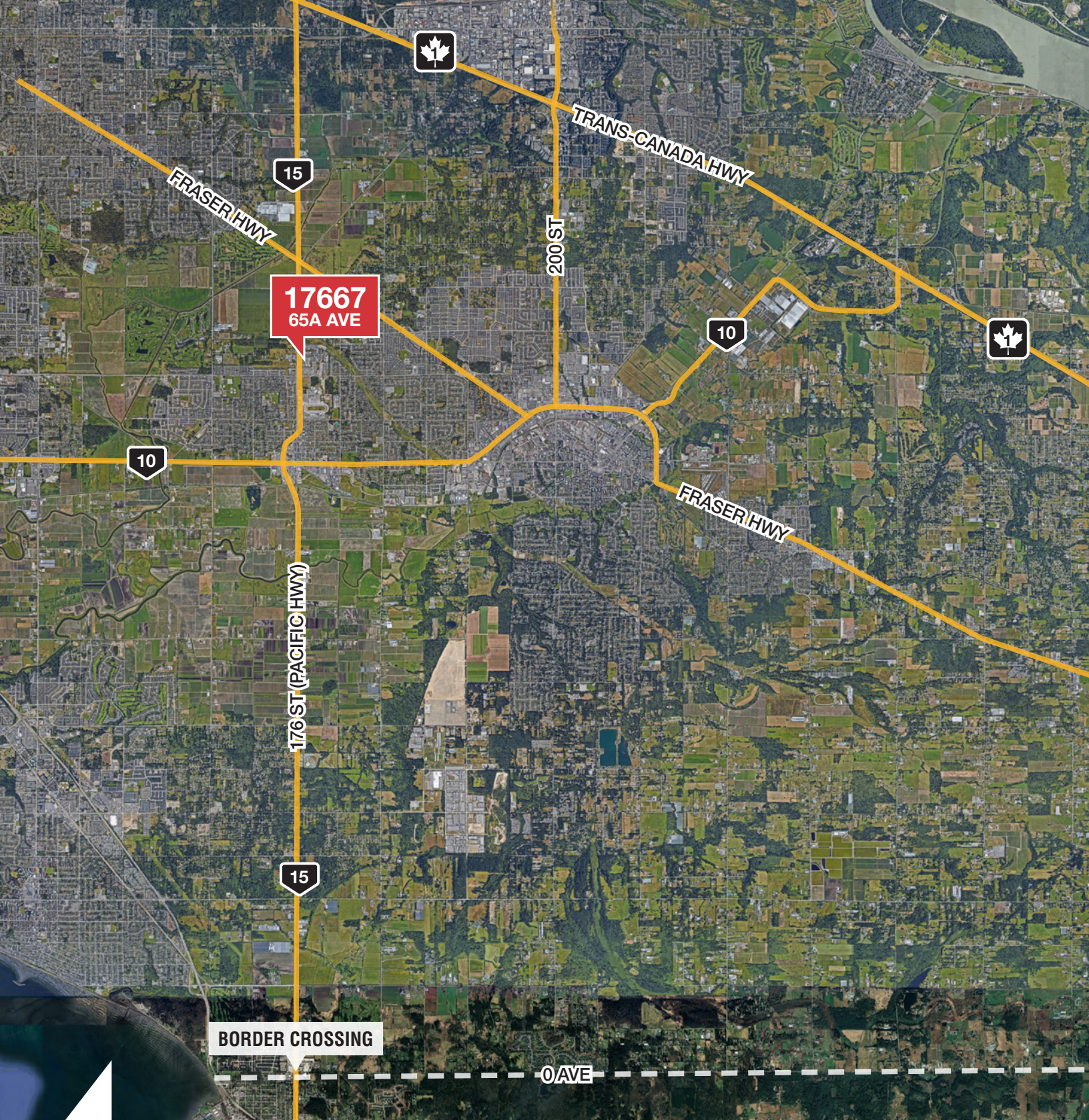
Sales, Leasing & Investment
604 514 6823
amacdonald@naicommercial.ca

*Personal Real Estate Corporation



NAICommercial

20353 64th Avenue, Suite 214
Langley, BC V2Y 1N5
+ 1 604 683 7535 | naicommercial.ca



17667
65A AVE

BORDER CROSSING

0 AVE

VALLEY COMMERCIAL TEAM

Gary Niesner*

Sales, Leasing & Investment

604 514 6832

garyn@naicommercial.ca

*Personal Real Estate Corporation

Angie MacDonald*

Sales, Leasing & Investment

604 514 6823

amacdonald@naicommercial.ca

*Personal Real Estate Corporation

NAI Commercial

20353 64th Avenue, Suite 214

Langley, BC V2Y 1N5

+ 1 604 683 7535

naicommercial.ca

© 2025 NAI Commercial (Langley) Ltd. All Rights Reserved.

No warranty or representation, express or implied, is made as to the accuracy of the information contained herein, and the same is submitted subject to errors, omissions, change of price, rental or other conditions, prior sale, lease or financing, or withdrawal without notice, and of any special listing conditions imposed by our principals no warranties or representations are made as to the condition of the property or any hazards contained therein are any to be implied.