

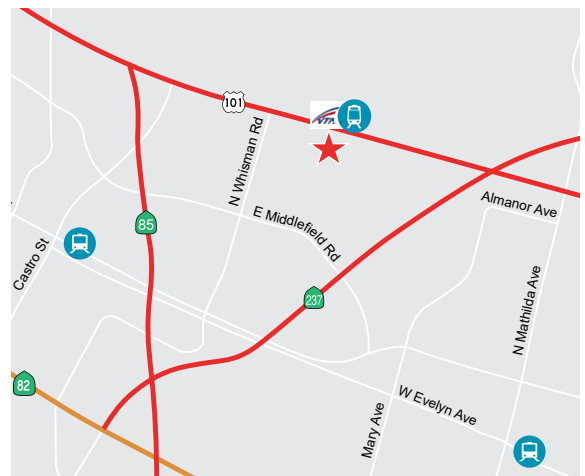


±1,450 SF Office Space Available For Lease

**605 ELLIS STREET, SUITE 105
MOUNTAIN VIEW, CA**

Project Highlights

- Easy Access to Highways 101, 85, and 237
- Walking Distance to the Bayshore/NASA Light Rail Station
- Two Offices
- Conference Room
- Shared Kitchen with Exterior Entrance and Outdoor Patio
- Common IT Server Room/Storage
- 3/1000 Parking Ratio
- High Ceilings with Floor-to-Ceiling Window Line
- Available Now



For information, please contact:

Christine Slonek

Senior Managing Director

t 408-489-3563

christine.slonek@nrmk.com

CA RE License #00999201

Andrea Bartlinski

Brokerage Services Specialist

t 408-982-8424

andrea.bartlinski@nrmk.com

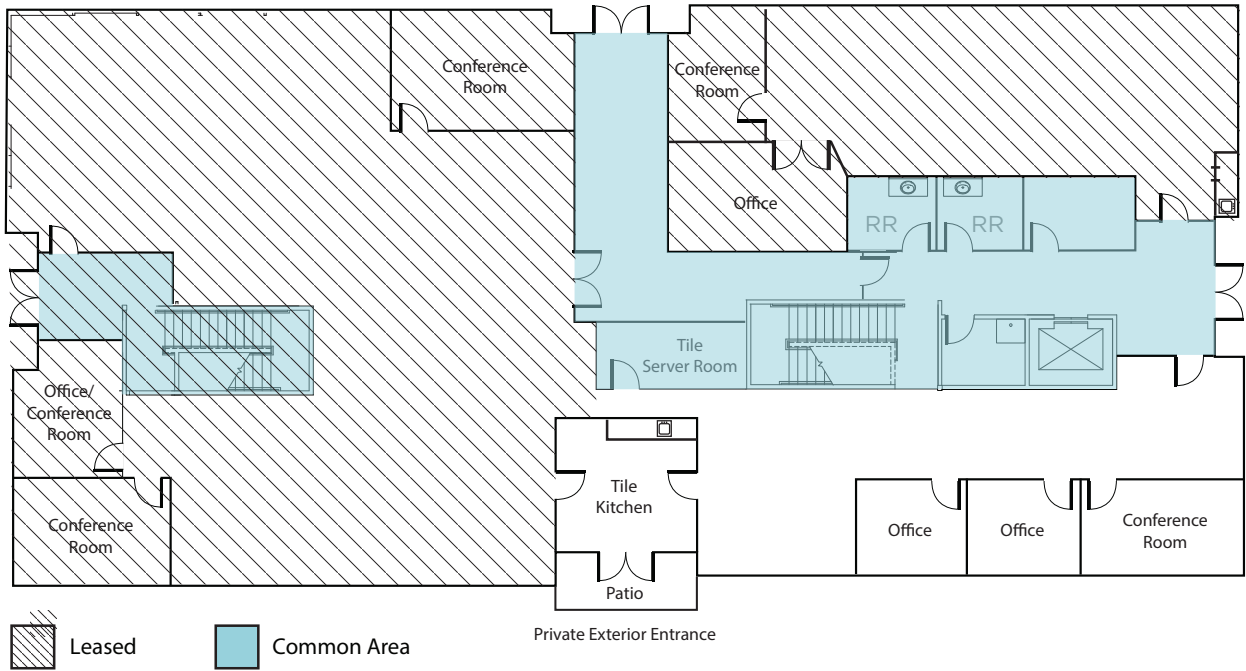
CA RE License #01338254

nrmk.com

NEWMARK

The distributor of this communication is performing acts for which a real estate license is required. The information contained herein has been obtained from sources deemed reliable but has not been verified and no guarantee, warranty or representation, either express or implied, is made with respect to such information. Terms of sale or lease and availability are subject to change or withdrawal without notice. 9033345461 • 10/25

Floor Plan



*This floor plan is not drawn to scale.

For information, please contact:

Christine Slonek

Senior Managing Director

t 408-489-3563

christine.slonek@nrmk.com

CA RE License #00999201

Andrea Bartlinski

Brokerage Services Specialist

t 408-982-8424

andrea.bartlinski@nrmk.com

CA RE License #01338254

nrmk.com

NEWMARK

The distributor of this communication is performing acts for which a real estate license is required. The information contained herein has been obtained from sources deemed reliable but has not been verified and no guarantee, warranty or representation, either express or implied, is made with respect to such information. Terms of sale or lease and availability are subject to change or withdrawal without notice. 9033345461 • 10/25

Floor Plan



*This floor plan is not drawn to scale.

For information, please contact:

Christine Slonek

Senior Managing Director

t 408-489-3563

christine.slonek@nmrk.com

CA RE License #00999201

Andrea Bartlinski

Brokerage Services Specialist

t 408-982-8424

andrea.bartlinski@nmrk.com

CA RE License #01338254

nmrk.com