



B i o t e c h   a n d   R & D   C e n t e r   f o r   L e a s e

# 320 Logue Avenue Mountain View, CA 94043

**ERIC JONG**

(669) - 300 - 6048  
eric@guggenheimrgi.com  
CalDRE #01486494

**AL GUGGENHEIM**

(669) - 300 - 6041  
al@guggenheimrgi.com  
CalDRE #00943363

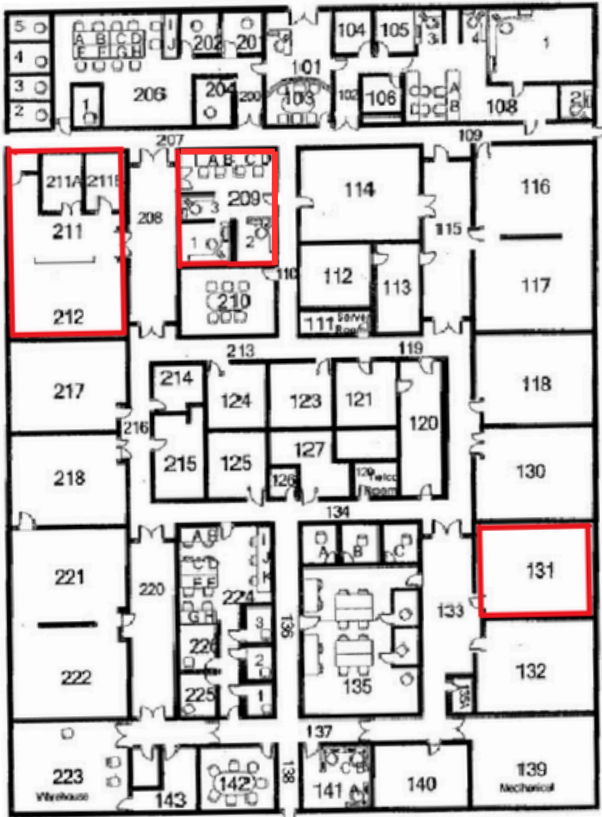
**(669) - 300 - 6040   GUGGENHEIMRGI.COM   CalDRE #01792244**

*"No warranty or representation expressed or implied is made as to the accuracy of the above information. This information is submitted subject to errors, omissions, change of price, rental rates or other conditions, withdrawal notice, and any special listing conditions."*



SPACE  
1,099 SF TO 2,061 RSF

LEASE RATE  
\$4.25 SF/MO MG



NOT TO SCALE



## OFFERING SUMMARY

<b>Building Size:</b>	30,363
<b>Available SF:</b>	1,099 - 2,061 SF
<b>Lot Size:</b>	2.14 Acres
<b>Zoning:</b>	ML

## PROPERTY OVERVIEW

- Convenient location near downtown Mountain View.
- Easy access to Central Expressway and Highways 237, 85 and 101.
- Shared conference rooms.
- Labs include De-ionized Water, Compressed Air, Natural Gas.



SPACES	LEASE RATE	SPACE SIZE
Suite 209	\$4.25 SF/MO Modified Gross	1,099 SF Rentable
Suite 131	\$4.25 SF/MO Modified Gross	1,134 SF Rentable
Suite 212/211	\$4.25 SF/MO Modified Gross	2,061 SF Rentable

(669) - 300 - 6040 GUGGENHEIMRGI.COM CalDRE #01792244

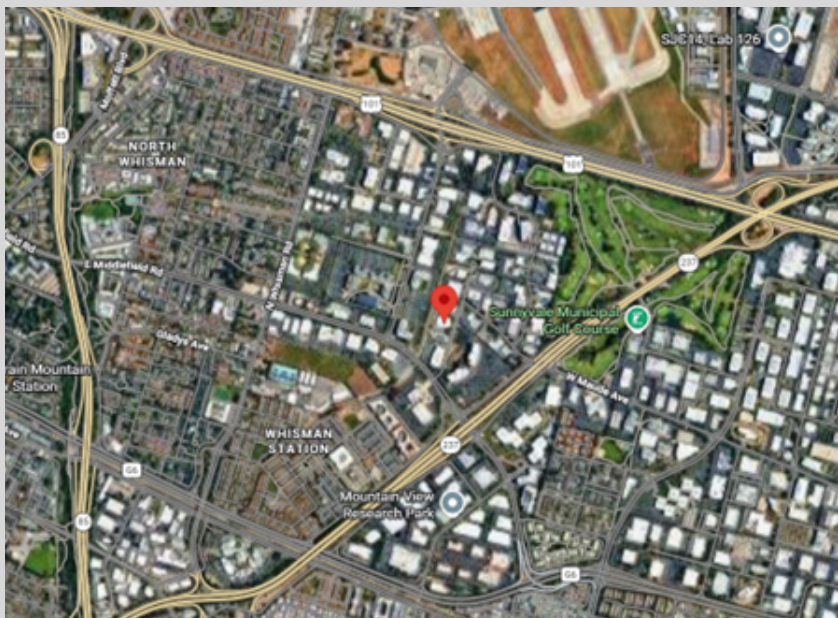
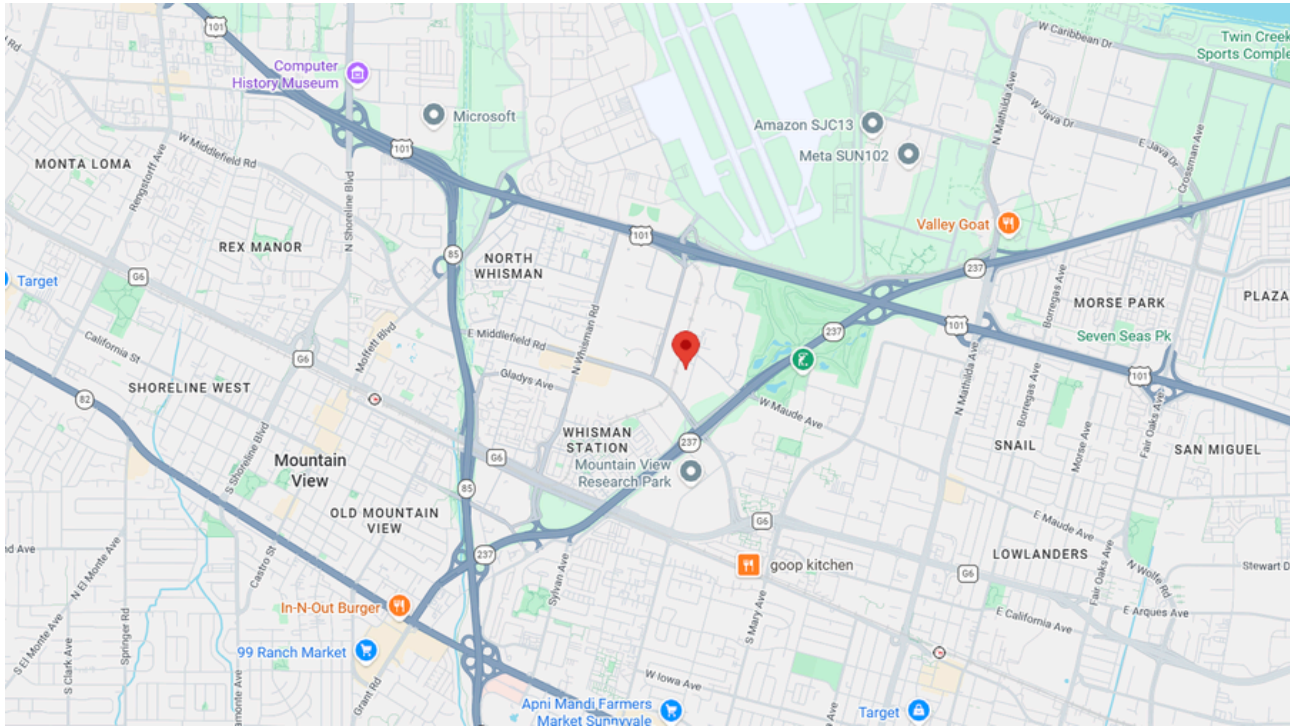
"No warranty or representation expressed or implied is made as to the accuracy of the above information. This information is submitted subject to errors, omissions, change of price, rental rates or other conditions, withdrawal notice, and any special listing conditions."



SPACE  
1,099 SF TO 2,061 SF

LEASE RATE  
\$4.25 SF/MO MG

## Location Maps: 320 LOGUE



### NEARBY AMENITIES AND BUSINESSES

- Downtown Mountain View, Castro Street - restaurants and shopping.
- Google, Microsoft, Amazon, Meta offices in close proximity.
- Close to CalTrain and Light Rail.

(669) - 300 - 6040 GUGGENHEIMRGI.COM CalDRE #01792244

*"No warranty or representation expressed or implied is made as to the accuracy of the above information. This information is submitted subject to errors, omissions, change of price, rental rates or other conditions, withdrawal notice, and any special listing conditions."*

