

# WALTHAM RESEARCH PARK

## 350 SECOND AVE

Waltham Research Park is a three building 210,000 square foot Office/Lab/and light manufacturing Park. Located in the heart of Waltham's research cluster, Waltham Research Park's Corporate neighbors include Sanofi-Genzyme, Thermo- Fisher Scientific, Massachusetts General Hospital and many more. The Park's existing tenants are QinetiQ Inc, BioModels, Boston Dynamics and Snapdragon Chemistry.

350 Second Avenue, one of three buildings in the Park, is undergoing major renovations. Consisting of approximately 40,013 sq ft, 350 Second Ave is suited for users in Laboratory Sciences and other fields down to research and development. Building to be brought up to current life safety standards, including a new elevator to service the building's two story section.

### Building Specifications:

- Ceiling height, up to 24' clear
- Life Safety: To current code including new elevator
- New operable windows
- Floor thickness: more than 6"
- Fully air-conditioned
- Sprinkler: Building fully wet sprinklered
- Power: 1200amp/480 volts/3 phase
- Loading: 2 Drive indoors and one tailboard

For information/showing please call :

Arthur Amadei. SVP

RW Holmes

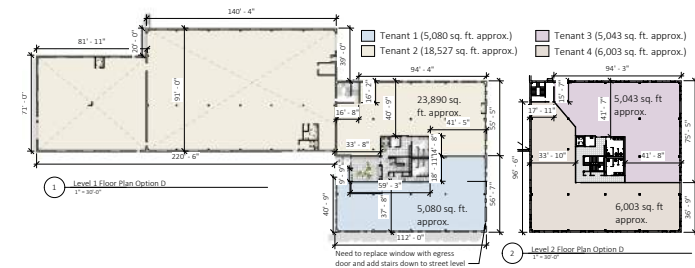
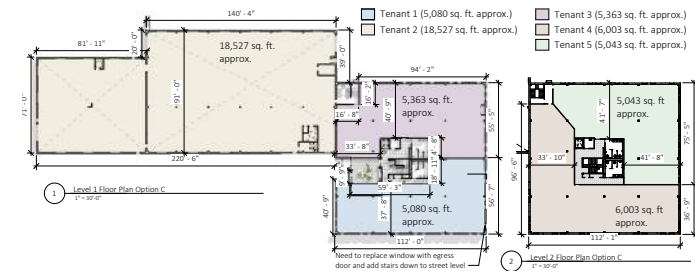
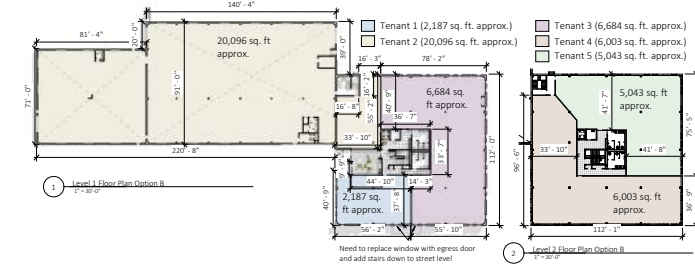
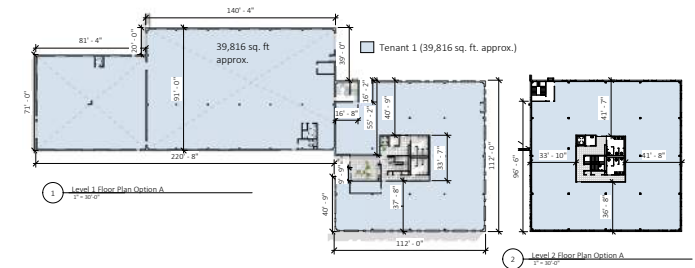
321 Commonwealth RD

Wayland, Ma.

office-508.651.9018

Cell-617-680-3551

\*subject to errors omissions and withdrawal without notice



350 SECOND AVE  
WALTHAM, MA 02451



NEW FACADE



NEW ENTRANCE



NEW LOBBY



NEW INTERIOR

