



**Keegan & Coppin**  
COMPANY, INC.

FOR LEASE

100 BRUSH CREEK ROAD  
SANTA ROSA, CA

RINCON VALLEY OFFICE  
SPACE AVAILABLE



Go beyond broker.

PRESENTED BY:

**BRIAN KEEGAN, PARTNER**  
LIC # 01809537 (707) 528-1400, EXT 249  
[BKEEGAN@KEEGANCOPPIN.COM](mailto:BKEEGAN@KEEGANCOPPIN.COM)

**KEVIN FLAHERTY, BROKER ASSOCIATE**  
LIC # 01855674 (707) 528-1400 EXT. 246  
[KFLAHERTY@KEEGANCOPPIN.COM](mailto:KFLAHERTY@KEEGANCOPPIN.COM)



100 BRUSH CREEK ROAD  
SANTA ROSA, CA

## RINCON VALLEY OFFICE SPACE FOR LEASE

# PROPERTY SUMMARY

## FEATURES

**SUITE 101:** 2,002+/- SF

**SUITE 101:** 959+/- SF

**SUITE 102:** 996+/- SF

- High Identity on Highway 12
- Easy Access to Fountaingrove Parkway
- On-Site Parking

## USER SPACE

Office

## PARKING

On-Site

## LEASE RATE

**\$1.75 PSF/MONTH FULL SERVICE**

## LEASE TERMS

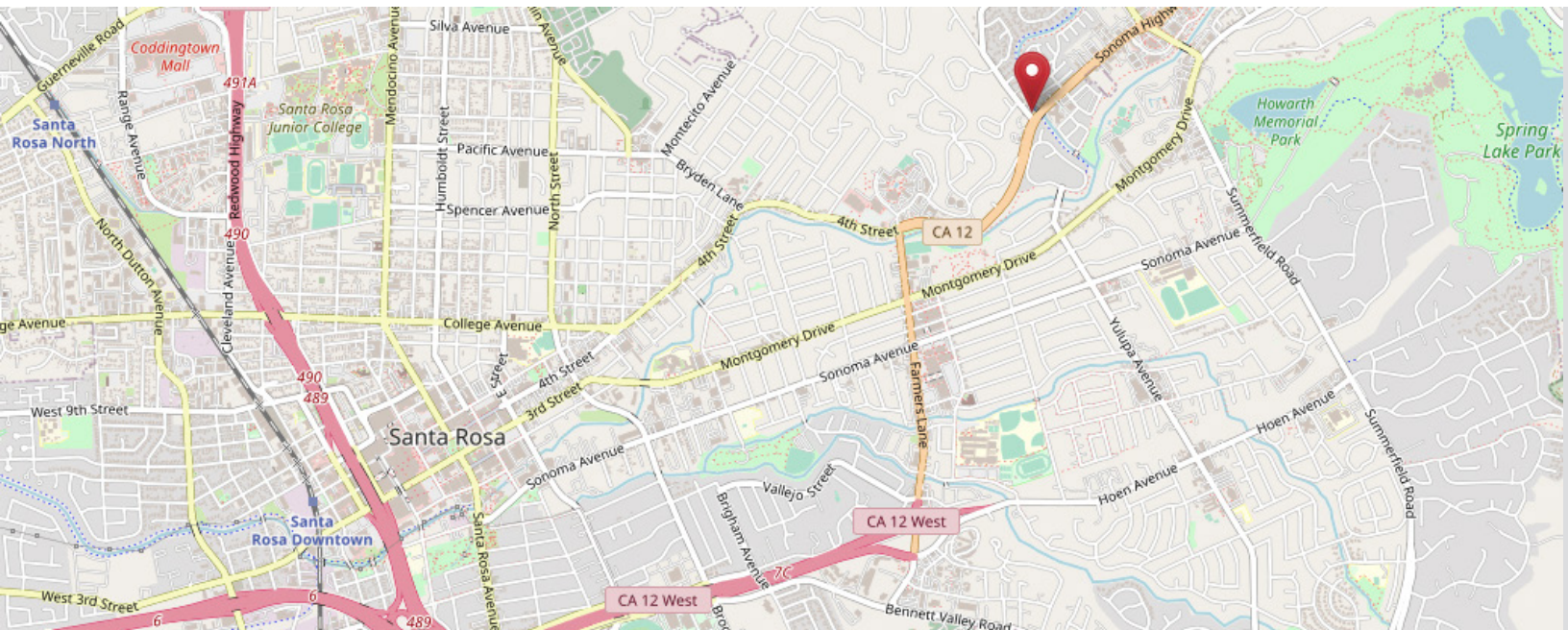
3-5 Year Lease

## DESCRIPTION OF PREMISES - FEATURES

100 Brush Creek Road, also known as the "Copper-Top" building, is a two-story office building in east Santa Rosa. The building is configured as a multi-tenant office building with an anchor suite upstairs and three separate suites downstairs. The lot is beautifully landscaped with mature trees in a welcoming setting.

Situated on the high-identity signalized intersection of Highway 12 and Brush Creek Road in Rincon Valley. The location provides easy access to Downtown Santa Rosa as well as the Fountaingrove Parkway. The property sits along Brush Creek and has a scenic trail that runs along the property and continues on to where Brush Creek joins Santa Rosa Creek.

The building is a multi-tenant office project with mature landscaping in a welcoming setting near the Santa Rosa creek. The space is peaceful, yet provides a high identity location at the corner of Brush Creek Road and Highway 12 in Rincon Valley. Easy access to the downtown area as well as the Fountaingrove Parkway.



### PRESENTED BY:

**BRIAN KEEGAN, PARTNER**  
**KEEGAN & COPPIN CO., INC.**  
LIC # 0180953 (707) 528-1400  
BKEEGAN@KEEGANCOPPIN.COM

**KEVIN FLAHERTY, BROKER ASSOCIATE**  
**KEEGAN & COPPIN CO., INC.**  
LIC # 01855674 (707) 528-1400, EXT. 246  
KFLAHERTY@KEEGANCOPPIN.COM

Keegan & Coppin Company, Inc.

The above information, while not guaranteed, has been secured from sources we believe to be reliable. Submitted subject to error, change or withdrawal. An interested party should verify the status of the property and the information herein.



**Keegan & Coppin**  
COMPANY, INC.

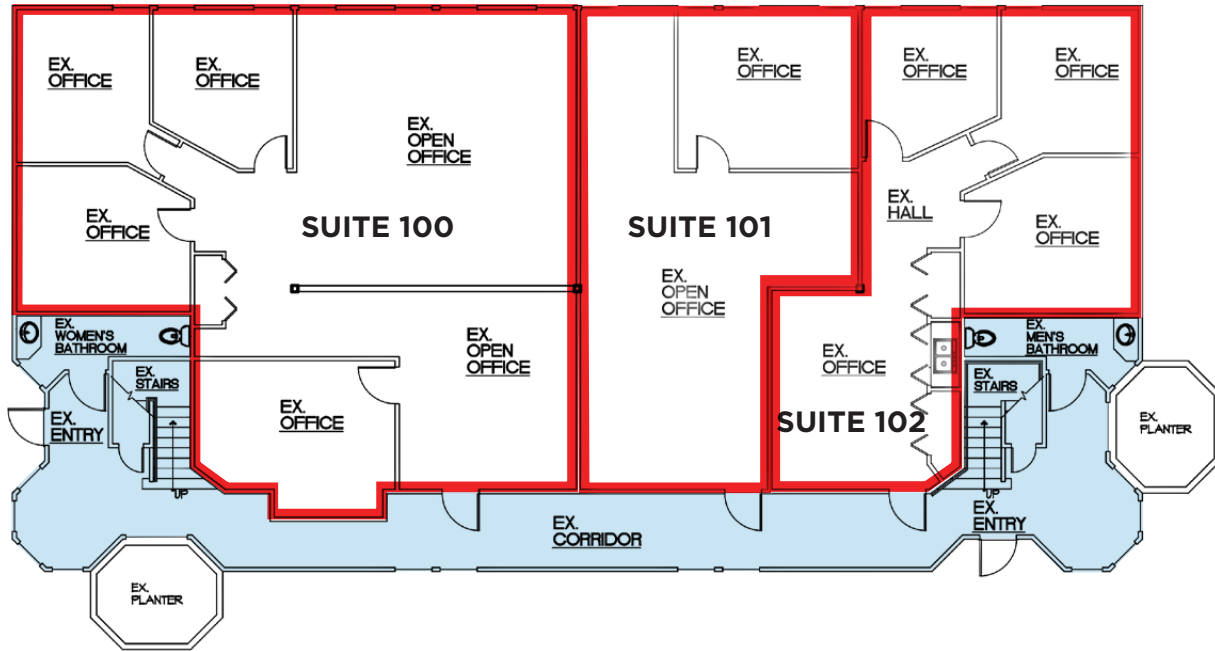


100 BRUSH CREEK ROAD  
SANTA ROSA, CA

**RINCON VALLEY OFFICE  
SPACE FOR LEASE**

# FLOOR PLAN

## FIRST FLOOR



SUITE	RSF	LEASE
101	2,002+/-	VACANT
102	959+/-	VACANT
102	996+/-	VACANT

- AVAILABLE
- COMMON AREA
- NOT AVAILABLE

**PRESENTED BY:**

**BRIAN KEEGAN, PARTNER**  
KEEGAN & COPPIN CO., INC.  
LIC # 0180953 (707) 528-1400  
BKEEGAN@KEEGANCOPPIN.COM

**KEVIN FLAHERTY, BROKER ASSOCIATE**  
KEEGAN & COPPIN CO., INC.  
LIC # 01855674 (707) 528-1400, EXT. 246  
KFLAHERTY@KEEGANCOPPIN.COM

Keegan & Coppin Company, Inc.

The above information, while not guaranteed, has been secured from sources we believe to be reliable. Submitted subject to error, change or withdrawal. An interested party should verify the status of the property and the information herein.



**Keegan & Coppin**  
COMPANY, INC.



100 BRUSH CREEK ROAD  
SANTA ROSA, CA

**RINCON VALLEY OFFICE  
SPACE FOR LEASE**

## PROPERTY PHOTOS



**PRESENTED BY:**

**BRIAN KEEGAN, PARTNER  
KEEGAN & COPPIN CO., INC.  
LIC # 0180953 (707) 528-1400  
BKEEGAN@KEEGANCOPPIN.COM**

**KEVIN FLAHERTY, BROKER ASSOCIATE  
KEEGAN & COPPIN CO., INC.  
LIC # 01855674 (707) 528-1400, EXT. 246  
KFLAHERTY@KEEGANCOPPIN.COM**

Keegan & Coppin Company, Inc.

The above information, while not guaranteed, has been secured from sources we believe to be reliable. Submitted subject to error, change or withdrawal. An interested party should verify the status of the property and the information herein.



**Keegan & Coppin**  
COMPANY, INC.



100 BRUSH CREEK ROAD  
SANTA ROSA, CA

**RINCON VALLEY OFFICE  
SPACE FOR LEASE**

**PROPERTY PHOTOS**



**PRESENTED BY:**

**BRIAN KEEGAN, PARTNER**  
**KEEGAN & COPPIN CO., INC.**  
LIC # 0180953 (707) 528-1400  
BKEEGAN@KEEGANCOPPIN.COM

**KEVIN FLAHERTY, BROKER ASSOCIATE**  
**KEEGAN & COPPIN CO., INC.**  
LIC # 01855674 (707) 528-1400, EXT. 246  
KFLAHERTY@KEEGANCOPPIN.COM

Keegan & Coppin Company, Inc.

The above information, while not guaranteed, has been secured from sources we believe to be reliable. Submitted subject to error, change or withdrawal. An interested party should verify the status of the property and the information herein.



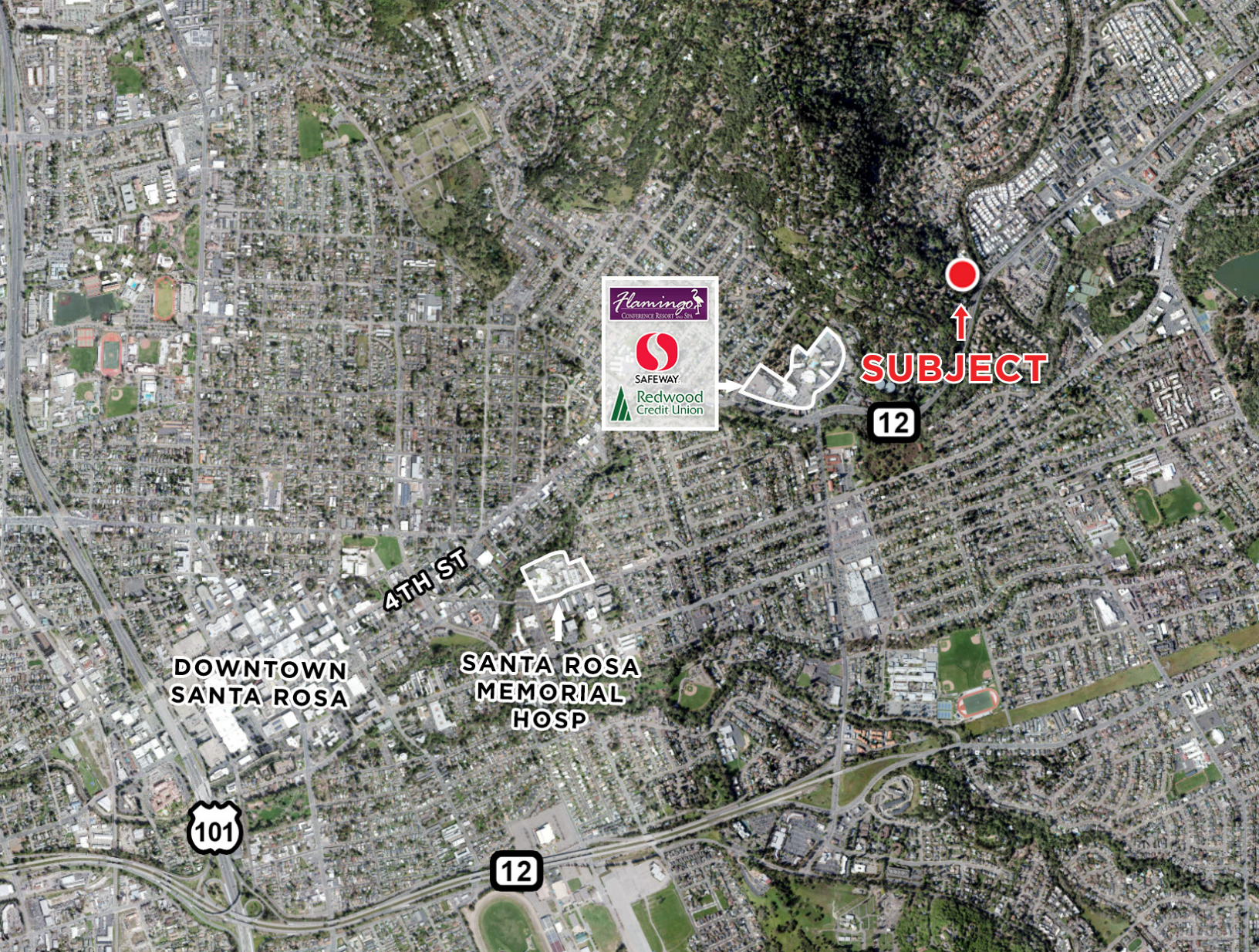
**Keegan & Coppin**  
COMPANY, INC.



100 BRUSH CREEK ROAD  
SANTA ROSA, CA

**RINCON VALLEY OFFICE  
SPACE FOR LEASE**

## AERIAL MAP



Keegan & Coppin Co., Inc.  
1355 N Dutton Ave., Suite 100  
Santa Rosa, CA 95401  
keegancoppin.com  
P: (707) 528-1400

REPRESENTED BY:

**BRIAN KEEGAN, PARTNER**  
LIC # 01809537 (707) 528-1400, EXT 249  
BKEEGAN@KEEGANCOPPIN.COM

**KEVIN FLAHERTY, BROKER ASSOCIATE**  
LIC # 01855674 (707) 528-1400 EXT. 246  
KFLAHERTY@KEEGANCOPPIN.COM