

FOR LEASE | INDUSTRIAL/FLEX SPACE

200 MASON CIRCLE, STE D. CONCORD, CA 94520

PRIME CENTRAL
CONCORD LOCATION
NEAR ALL MAIN
FREEWAYS



Eric Rehn, CCIM

Senior Director, Industrial | R&D

925.784.3449

eric.rehn@tricommercial.com

LIC: #01365267

Clayton Temple

Sales & Leasing Associate

925-296-3311

clayton.temple@tricommercial.com

LIC: #02006440

200 MASON CIRCLE

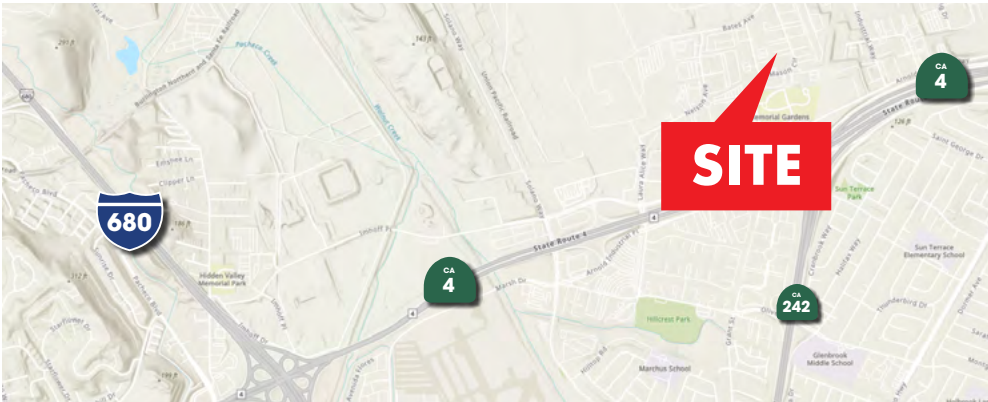
CONCORD, CA 94520

**PRIME CENTRAL CONCORD LOCATION
NEAR ALL MAIN FREEWAYS**



PROPERTY HIGHLIGHTS

- Gated parking area
- Temperature controlled warehouse
- 20' Clear height
- One (1) grade-level roll-up door (14' x 14')
- Light Industrial zoning
- Centrally located in Concord less than 5 miles from all freeways in the area, Hwy 4, 242 and I-680



AVAILABLE

- Suite D: ±4,000 SF
- Rent: \$1.50 PSF/Mo IG

Eric Rehn, CCIM

925.784.3449

eric.rehn@tricommercial.com

LIC: #01365267

Clayton Temple

925.296.3311

clayton.temple@tricommercial.com

LIC: #02006440



www.tricommercial.com

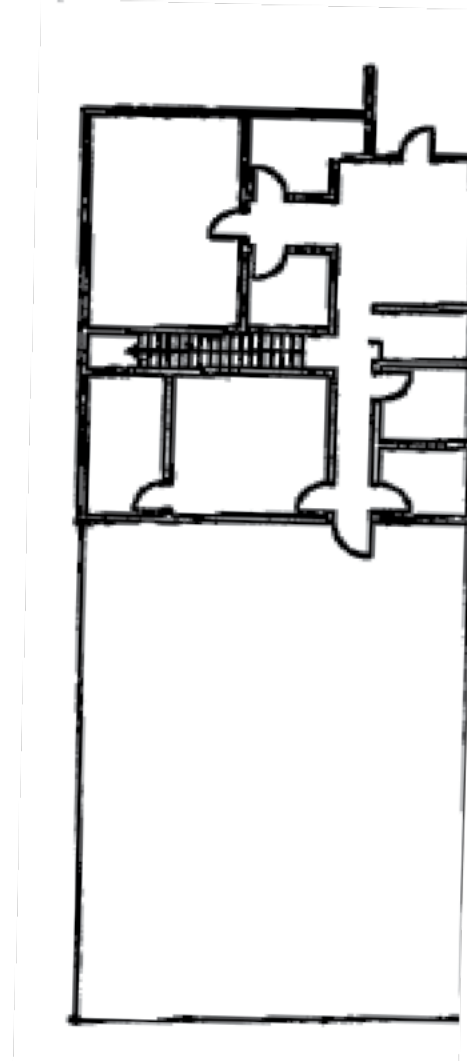
200 MASON CIRCLE

CONCORD, CA 94520

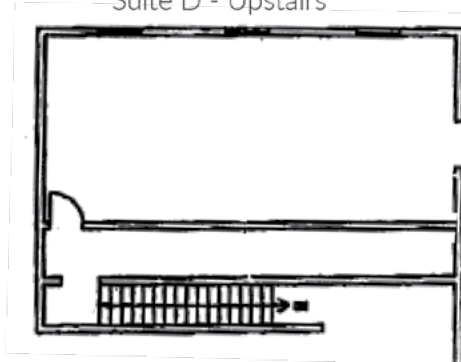
PRIME CENTRAL CONCORD LOCATION
NEAR ALL MAIN FREEWAYS



Suite D - Ground floor



Suite D - Upstairs



Eric Rehn, CCIM

925.784.3449

eric.rehn@tricommercial.com

LIC: #01365267

Clayton Temple

925.296.3311

clayton.temple@tricommercial.com

LIC: #02006440



www.tricommercial.com