

Compton

For Rent
**60 Whitechapel High Street
Whitechapel E1**



New architecturally designed office
space in Aldgate with outside space
on every floor

For Rent

Size

6,000 - 128,550 Ft²

Rent

£59.50 - £65 per sq ft

Fitout

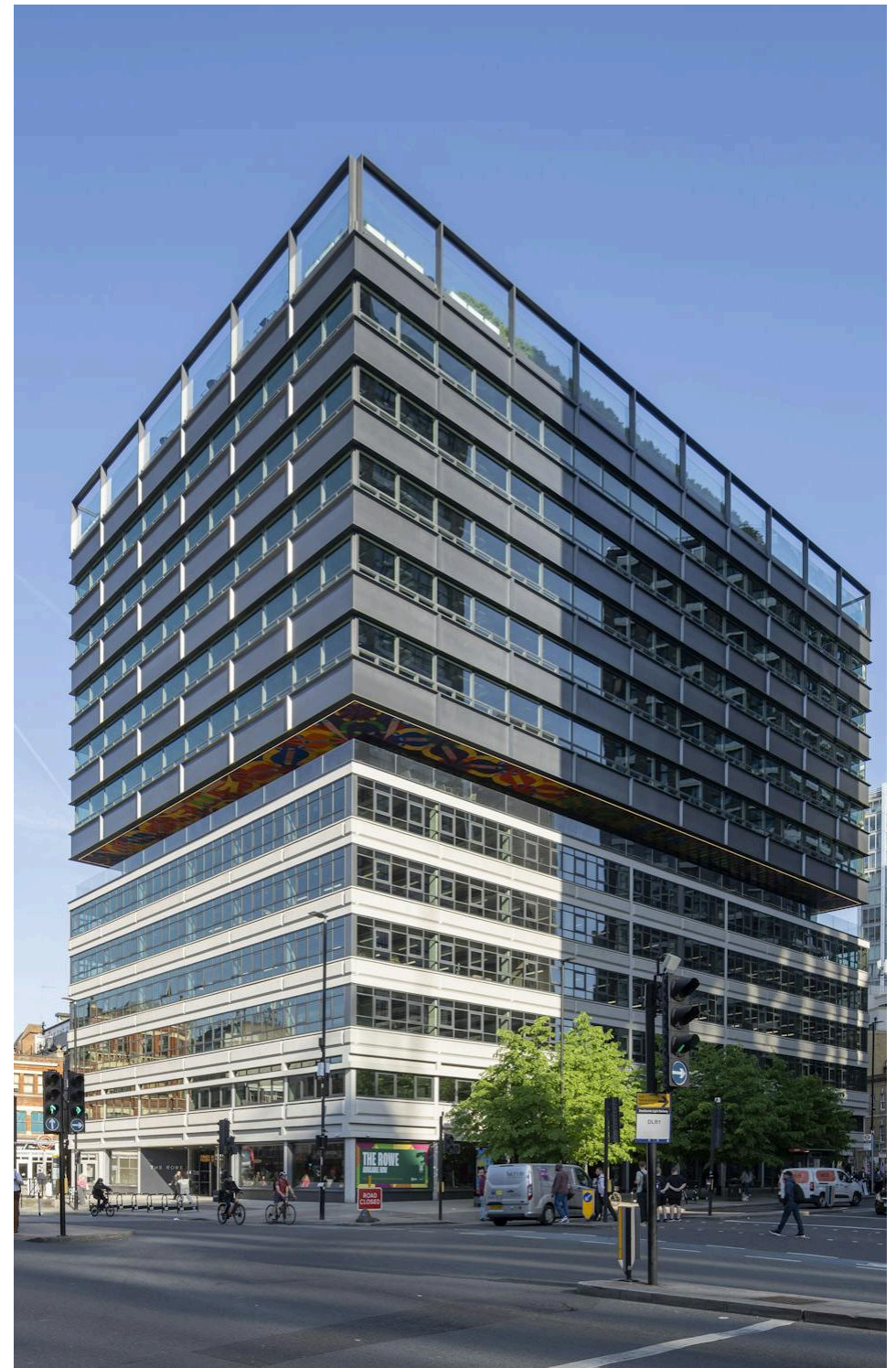
Fitted. Part 3rd & 4th floors offered fully fitted, other floors can be fitted subject to terms

The Rowe

60 Whitechapel High Street
Whitechapel E1

Description

The Rowe is a cutting-edge office development offering between 6,000 and 94,188 sq ft of adaptable workspace, available both fitted and unfitted to suit your vision. Set across multiple levels, this newly reimagined landmark features private terraces on every floor, a show-stopping communal rooftop entertainment space, and premium amenities designed with wellbeing and performance in mind. Expect light-filled floorplates, a stylish cafe, a dedicated business lounge, abundant cycle storage, and advanced smart building technology. Designed by renowned architects AHMM and adorned with artwork from Yinka Ilori and Paul Cockledge, The Rowe is a destination that blends function, culture, and inspiration.



Compton

For Rent

The Rowe
60 Whitechapel High Street
Whitechapel E1

Click to Play



For Rent

The Rowe
60 Whitechapel High Street
Whitechapel E1

Click to Play



For Rent

The Rowe
60 Whitechapel High Street
Whitechapel E1

Unfitted Floor

Size

6,000 - 128,550 Ft²

Rent

£59.50 - £65 per sq ft

Fitout

Fitted. Part 3rd & 4th floors offered fully fitted, other floors can be fitted subject to terms



Compton

For Rent

The Rowe
60 Whitechapel High Street
Whitechapel E1

Unfitted Floor

For Rent

The Rowe
60 Whitechapel High Street
Whitechapel E1

Roof Terrace



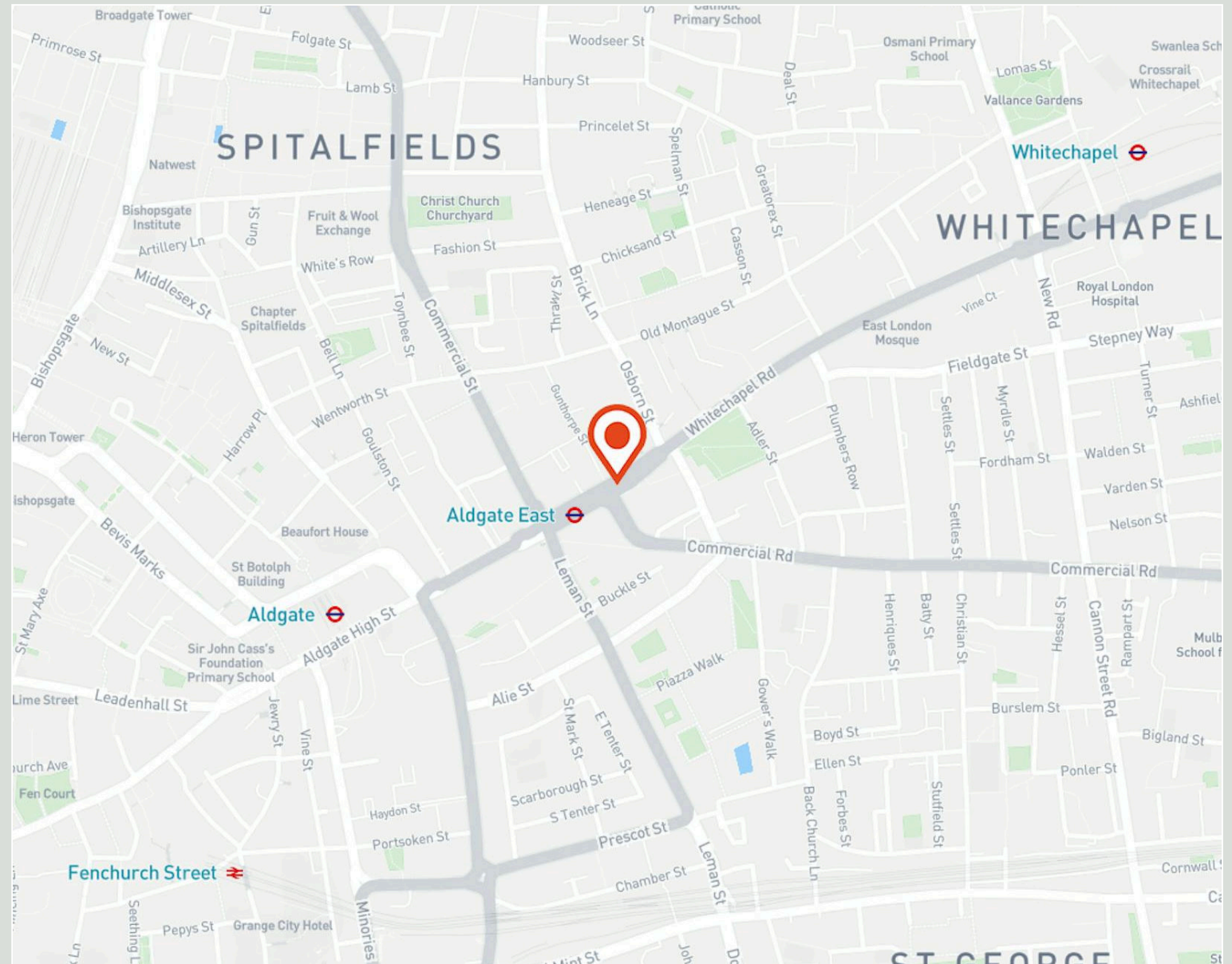
Roof terrace

For Rent

The Rowe
60 Whitechapel High Street
Whitechapel E1

Location

Situated in vibrant Whitechapel, The Rowe is immersed in the cultural dynamism of Shoreditch and The City. Just moments from Aldgate East and Whitechapel stations, the location offers seamless access across London and beyond, including direct links to Heathrow, Canary Wharf, and Stratford. Surrounded by a thriving food, arts, and fitness scene—think Brick Lane, Whitechapel Gallery, and a host of boutique cafes and eateries—this E1 address is more than a workplace; it's a lifestyle hub. Whether you're meeting clients or grabbing artisanal coffee, you're always just minutes away from what matters.

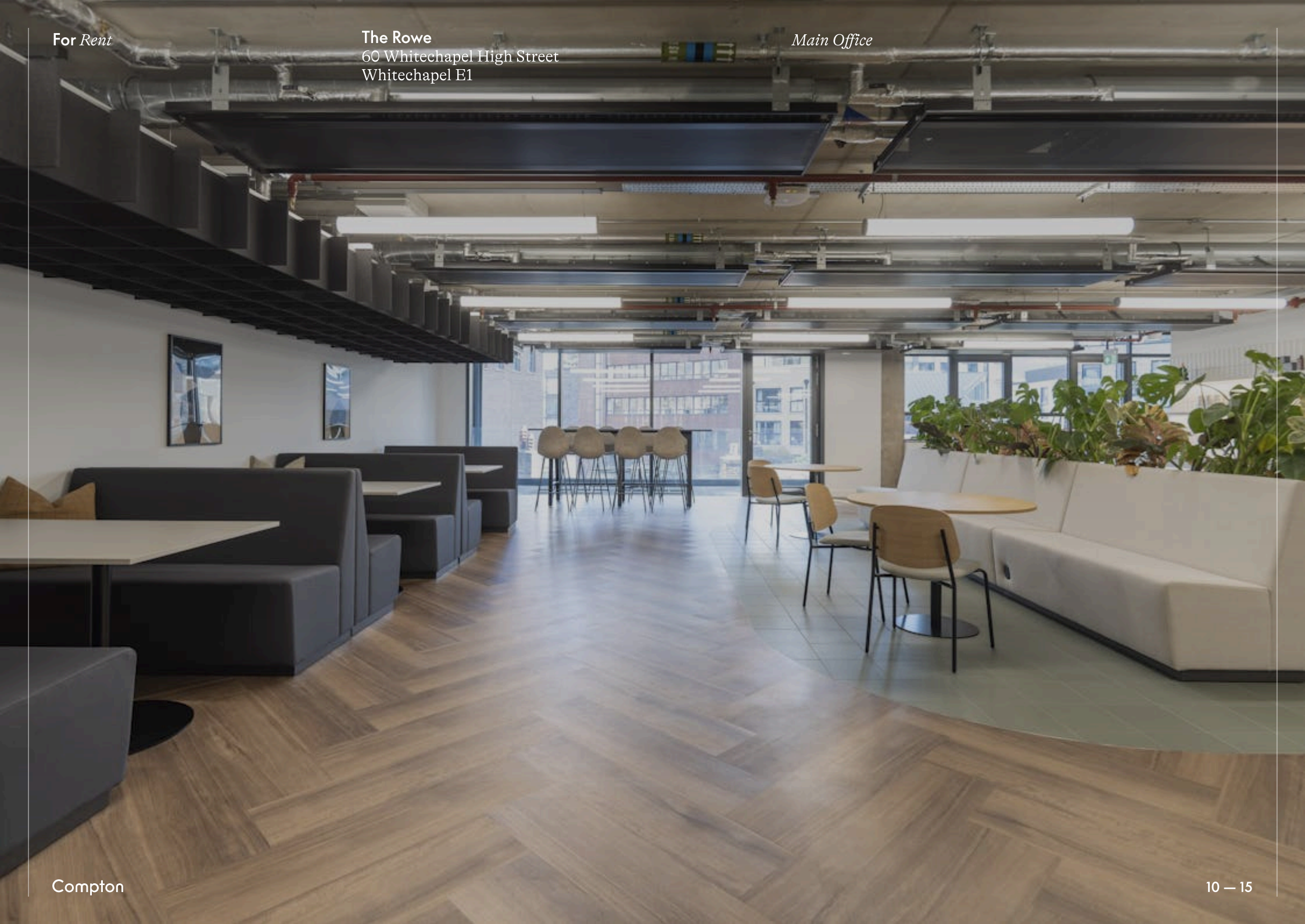


Compton

For Rent

The Rowe
60 Whitechapel High Street
Whitechapel E1

Main Office



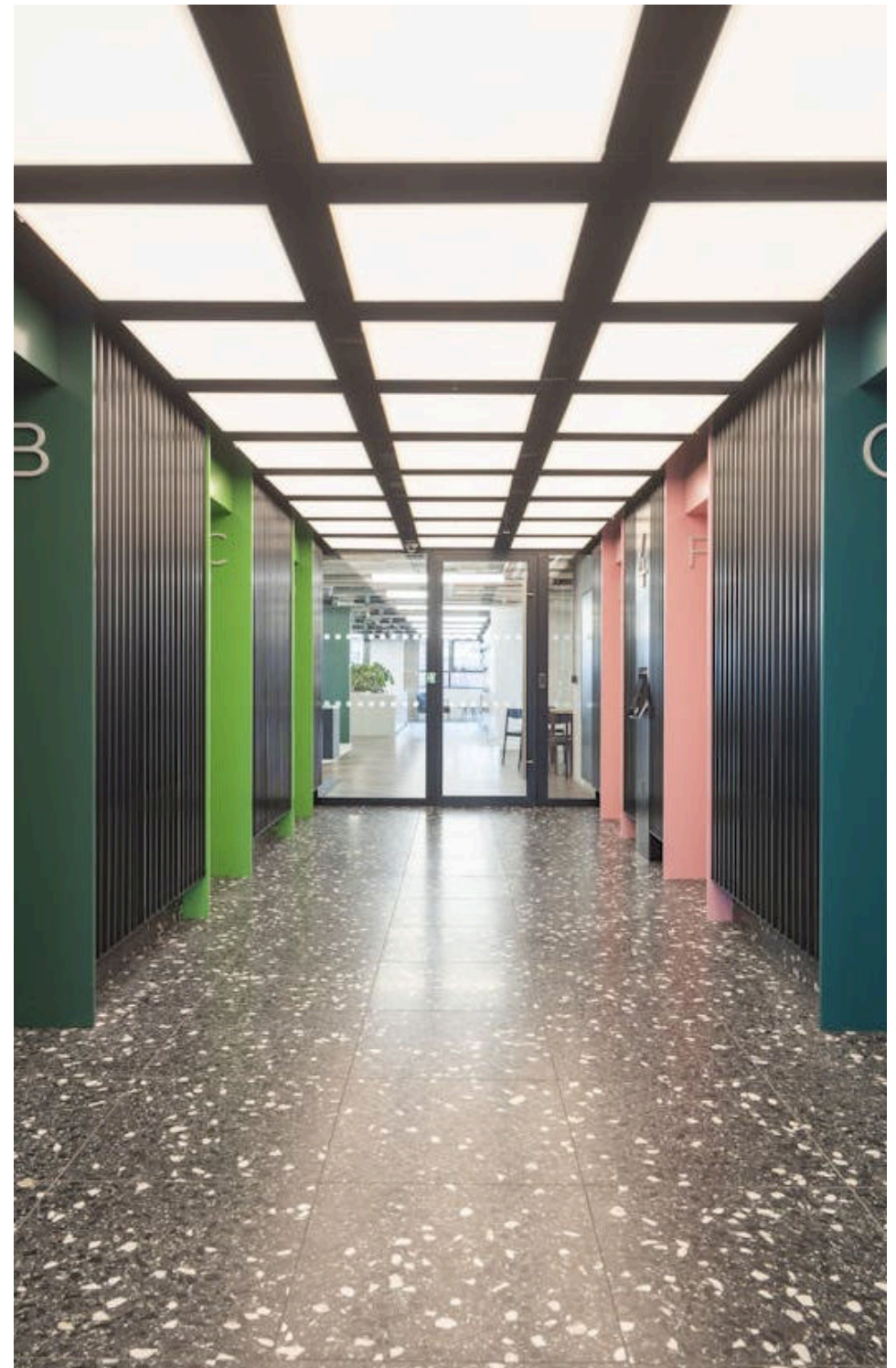
For Rent

The Rowe
60 Whitechapel High Street
Whitechapel E1

Amenities

- 165,000 sq ft of brand new workspace with flexible floor plates of up to 17,000 sq ft designed by AHMM architects
- Part 3rd & 4th floors offered fully fitted
- Over 17,000 sq ft of external space, with private terraces on every floor and an 8,000 sq ft communal roof garden open all year round
- Setting a sustainable benchmark: targeting BREEAM 'Excellent' rating with 245 lockers and 15 showers with direct ground floor access
- Underground end of journey hub with 284 cycle spaces and a unique position on the Cycle Superhighway 2, connecting Aldgate to Stratford
- Targeting WELL 'Gold' certification with exceptional air quality, 47% of windows are openable
- Smart technology enabled building set to achieve SmartScore

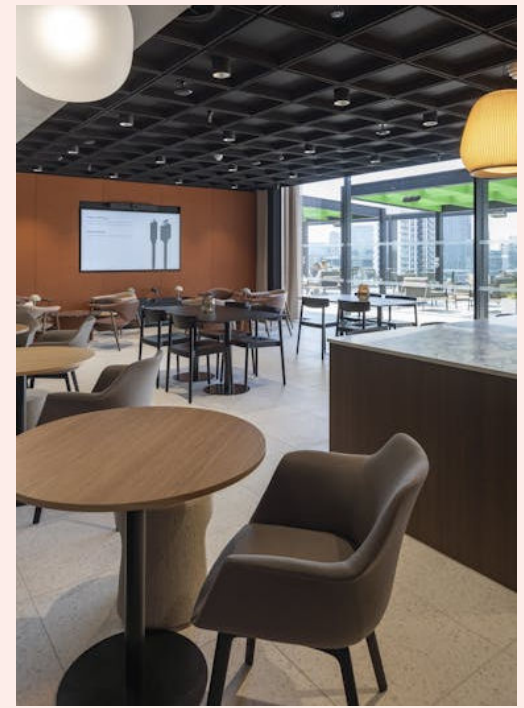
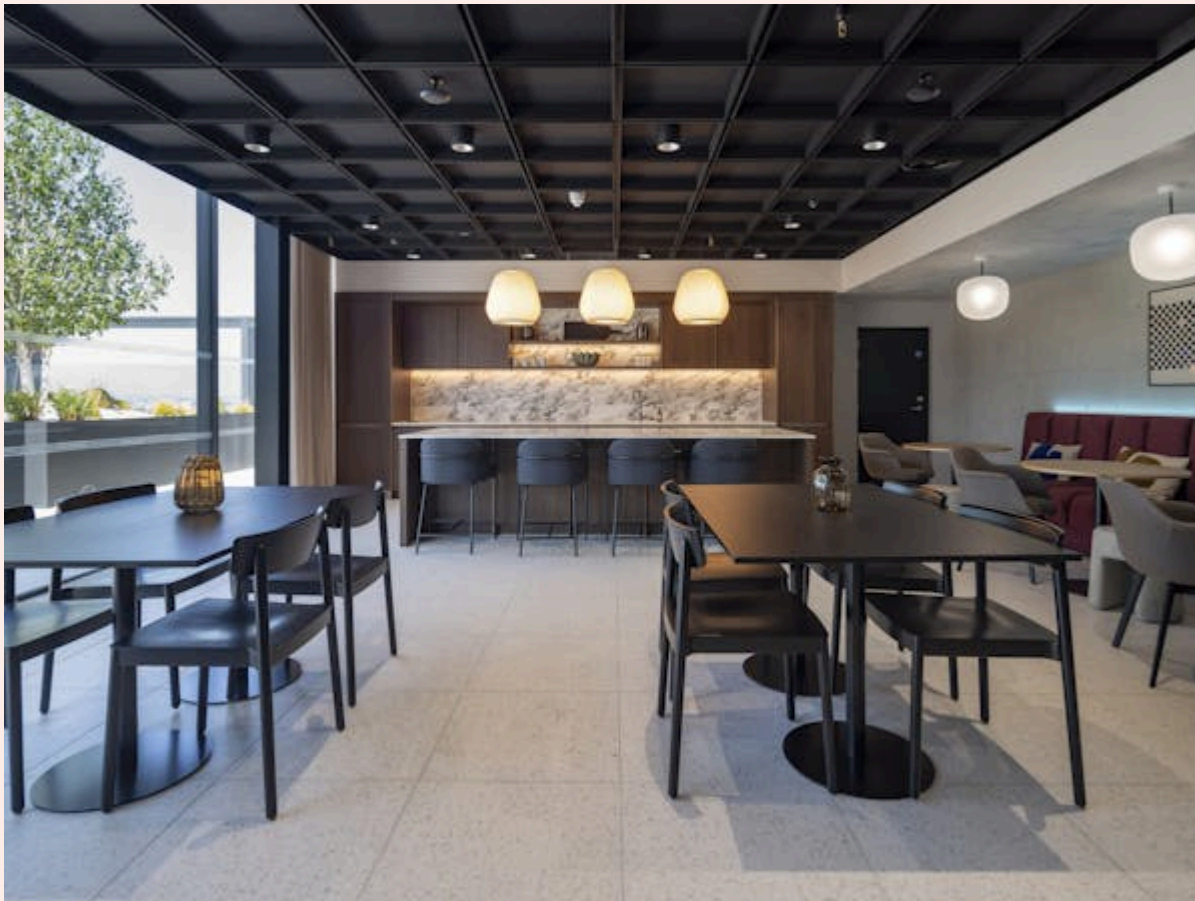
Compton



For Rent

The Rowe
60 Whitechapel High Street
Whitechapel E1

Breakout space



Breakout space

For Rent

The Rowe
60 Whitechapel High Street
Whitechapel E1

Availability

Name	Sq Ft	Rent (Sq Ft)	Rates Payable (Sq Ft)	Service Charge (Sq Ft)	Availability
12th - Communal Roof-Top Terrace	8,408	-	n/a	n/a	Occupied
11th - 299 Sq Ft Terrace	13,875	£65	£24.70	£13.43	Under Offer
10th - 299 Sq Ft Terrace	13,875	£62.50	£24.70	£13.43	Available
9th - 299 Sq Ft Terrace	13,868	£59.50	£24.70	£13.43	Available
8th - 299 Sq Ft Terrace	13,862	£59.50	£24.70	£13.43	Available
7th - 299 Sq Ft Terrace	13,873	£59.50	£24.70	£13.43	Available
4th - 1,667 Sq Ft Terrace	15,234	£65	£24.70	£13.43	Available
3rd - Part 3rd 127 Sq Ft Terrace	9,660	£65	£24.70	£13.43	Available
2nd - 127 Sq Ft Terrace	17,178	-	n/a	n/a	Available
1st - 994 Sq Ft Terrace	14,248	-	n/a	n/a	Available
Ground - Retail	2,877	-	n/a	n/a	Available
Ground - Reception Lobby Communal	5,253	-	n/a	n/a	Occupied
Total	142,211	£62.29	£24.70	£13.43	

For Rent

The Rowe
60 Whitechapel High Street
Whitechapel E1

Tenure

New Lease

Availability

Available Immediately

Compton Concierge

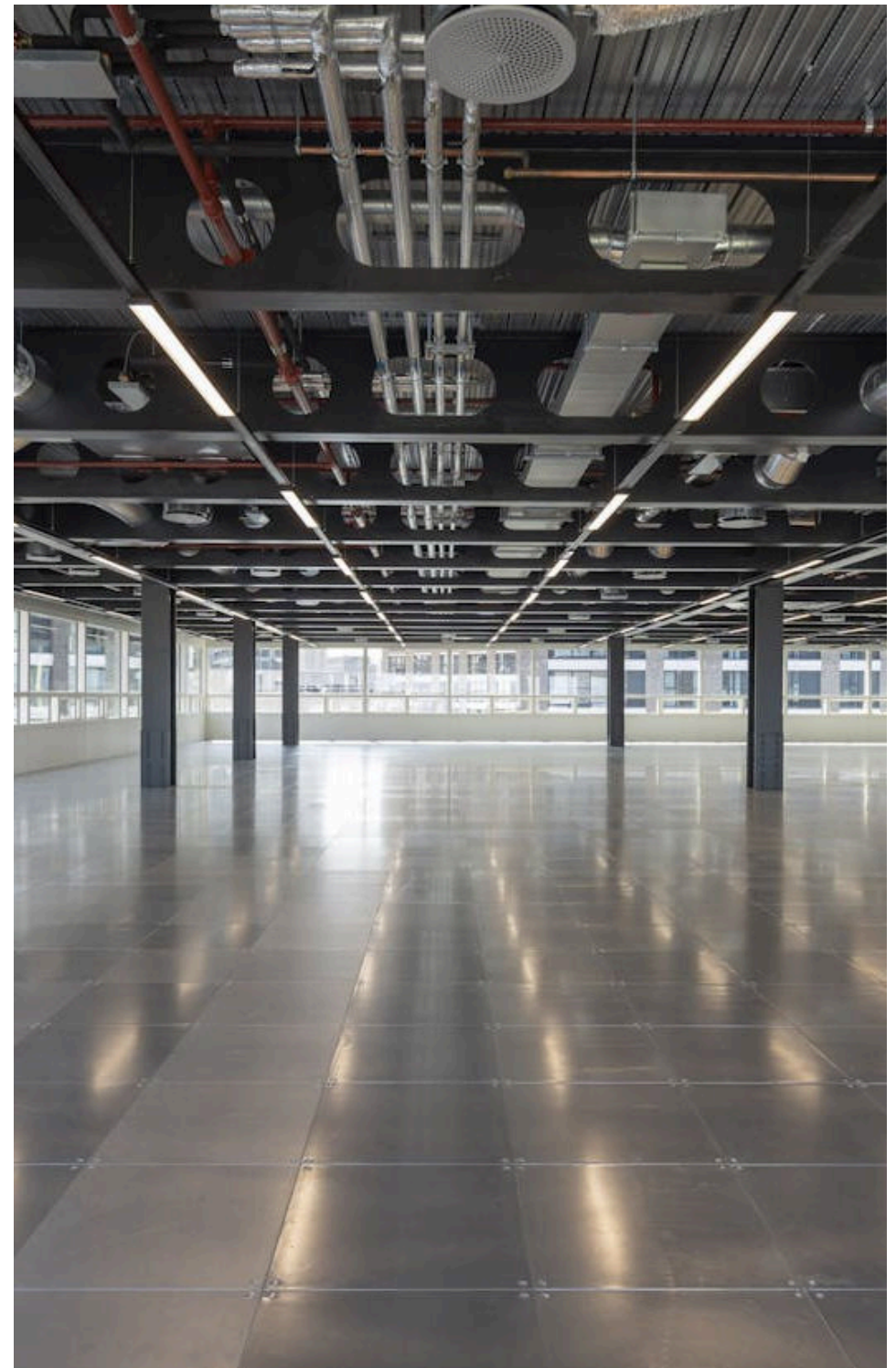
Want your workspace *managed?*

Find out more

compton.london/concierge

Content

Watch the Film
(click button)



Contact Us

compton.london

020 7101 2020

enquiries@compton.london

All appointments to view must be arranged via sole agents, Compton, through:



Joshua Miller

jm@compton.london

0207 101 2020 | 07917 725 365



Shaun Simons

ss@compton.london

0207 101 2020 | 07788 423131



Sonia Oberoi

so@compton.london

020 7101 2020 | 07483 882 598