

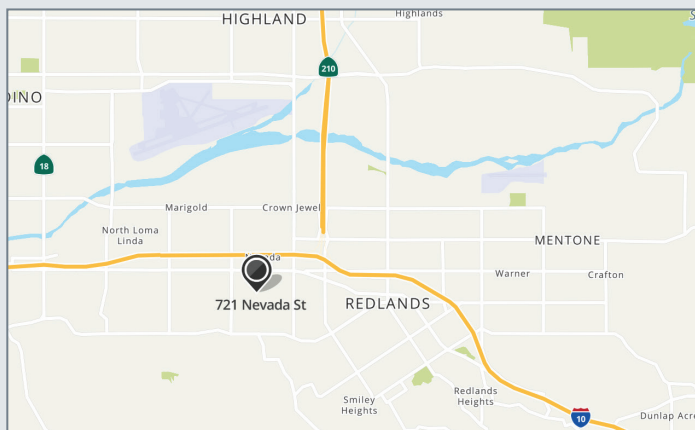


ARES  
INDUSTRIAL  
MANAGEMENT

# EMPIRE BUSINESS PARK

1915 W REDLANDS BLVD & 721 NEVADA ST, REDLANDS, CA 92373

±3,793 Leasable SQ FT | Unit #209 | Flex/Industrial w/Office



## BUILDING HIGHLIGHTS

- Campus Setting with Diverse Tenant Mix
- Storefront Signage Visibility
- Climate Controlled Offices
- Warehouse with Ground Level Loading
- Easy Delivery Truck Access
- Near Amenities & USPS Facility
- Close Proximity to I-10 & 210 Fwy Access

ERIC L. HUTCHINS

CA DRE Salesperson License #01515547  
1255 West Colton Avenue, Suite 525  
Redlands, CA 92374  
909-255-1210



INLAND EMPIRE  
COMMERCIAL  
REAL ESTATE

CA DRE Broker License #01905051

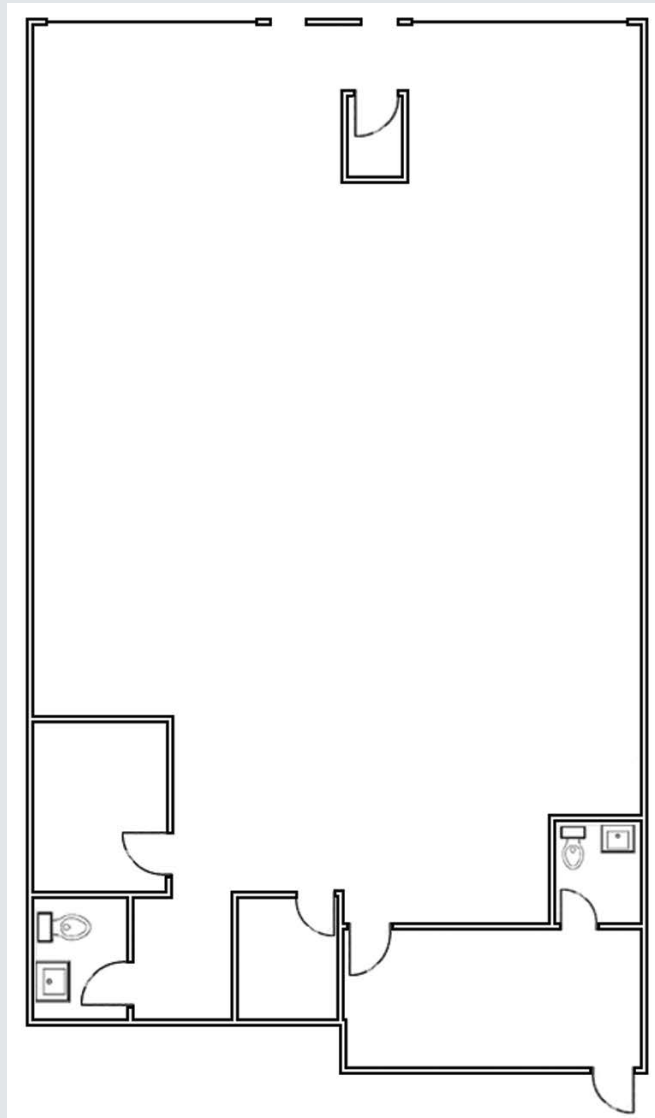


ARES  
INDUSTRIAL  
MANAGEMENT

# EMPIRE BUSINESS PARK

1915 W REDLANDS BLVD & 721 NEVADA ST, REDLANDS, CA 92373

±3,793 Leasable SQ FT | Unit #209 | Flex/Industrial w/Office



ERIC L. HUTCHINS

CA DRE Salesperson License #01515547  
1255 West Colton Avenue, Suite 525  
Redlands, CA 92374  
909-255-1210



INLAND EMPIRE  
COMMERCIAL  
REAL ESTATE

CA DRE Broker License #01905051



**ARES  
INDUSTRIAL  
MANAGEMENT**

# EMPIRE BUSINESS PARK

1915 W REDLANDS BLVD & 721 NEVADA ST, REDLANDS, CA 92373

±3,793 SF Leasable SQ FT | Unit #209 | Flex/Industrial w/Office



ERIC L. HUTCHINS

CA DRE Salesperson License #01515547  
1255 West Colton Avenue, Suite 525  
Redlands, CA 92374  
909-255-1210



**INLAND EMPIRE  
COMMERCIAL  
REAL ESTATE**

CA DRE Broker License #01905051