



901  
S BOND



VIEWS  
DINING  
SHOPPING  
ENTERTAINMENT

6 STORIES

227,000 RSF

 | Harbor East

 CUSHMAN &  
WAKEFIELD

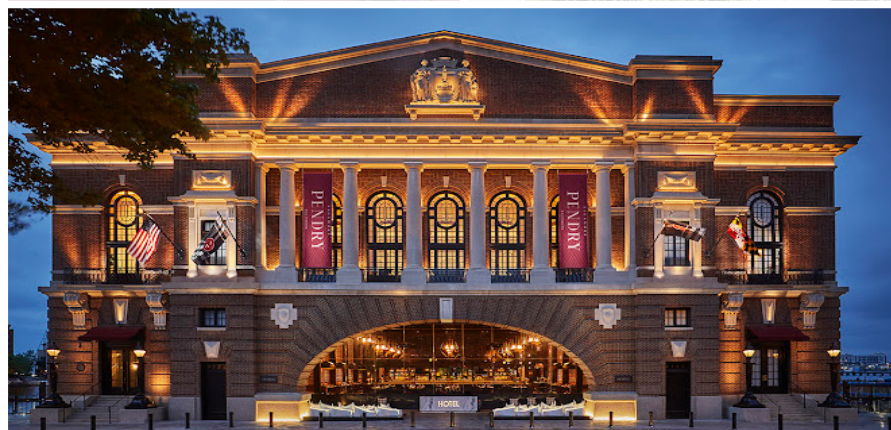
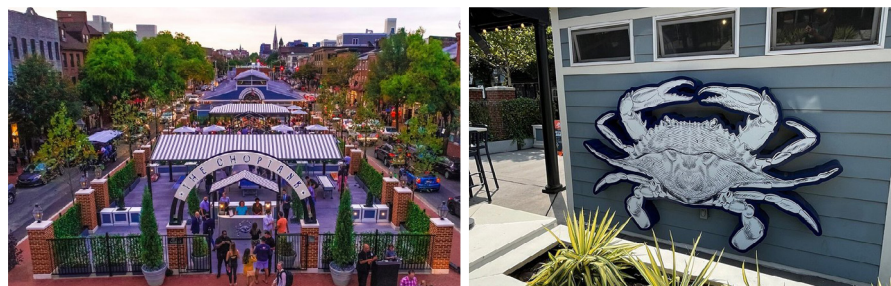
# 901 S BOND

## BUILDING FEATURES

# FULL 5TH & 6TH FLOORS AVAILABLE



## VENTURE EAST



6-Story, 227,700 RSF Pier Office Building Panoramic Waterfront View



Conveniently located near the highly walkable and amenitized Harbor East and located in the historically authentic Fells Point



Local attractions include the world-renowned Sagamore Pendry Hotel and the completely reimagined Broadway Market



State of the art raised access flooring system



Back-up generator and UPS system available for Tenant's use



Virtually column-free 5' planning module





**901 S BOND**

# IN AN ICONIC AND DYNAMIC WATERFRONT NEIGHBORHOOD



Harbor East



CUSHMAN &  
WAKEFIELD

---

**FOR LEASING INFORMATION, CONTACT:**

**Brian P. Wyatt**

Senior Director

T: +1 410 347 7804

M: +1 410 458 7127

[brian.wyatt@cushwake.com](mailto:brian.wyatt@cushwake.com)

**Bronwyn E. LeGette**

Senior Director

T: +1 410 347 7565

M: +1 410 627 2791

[bronwyn.legette@cushwake.com](mailto:bronwyn.legette@cushwake.com)

**Alexander W. Mitchell**

Director

T: +1 410 347 7546

M: +1 410 952 1591

[alexander.mitchell@cushwake.com](mailto:alexander.mitchell@cushwake.com)