

PROJECT DETAILS

11560 MAJESTIC PALMS BLVD • 10,000 SF AVAILABLE FOR LEASE

PROPERTY HIGHLIGHTS

- 10,000 SF
- 82 Feet of frontage
- Prominent monument Signage
- Conveniently positioned at a lighted intersection shared with Super Target
- Constructed in 2017
- 88 Parking Spaces

COUNTY

Lee County

MARKET

Fort Myers, FL

DEMOGRAPHICS

	1 MILE	3 MILE	5 MILE
 POPULATION	7,169	39,883	103,770
 DAYTIME POPULATION	3,727	14,724	50,331
 AVERAGE HH INCOME	\$99,400	\$107,716	\$105,114



SITE AERIAL

11560 MAJESTIC PALMS BLVD • 10,000 SF AVAILABLE FOR LEASE



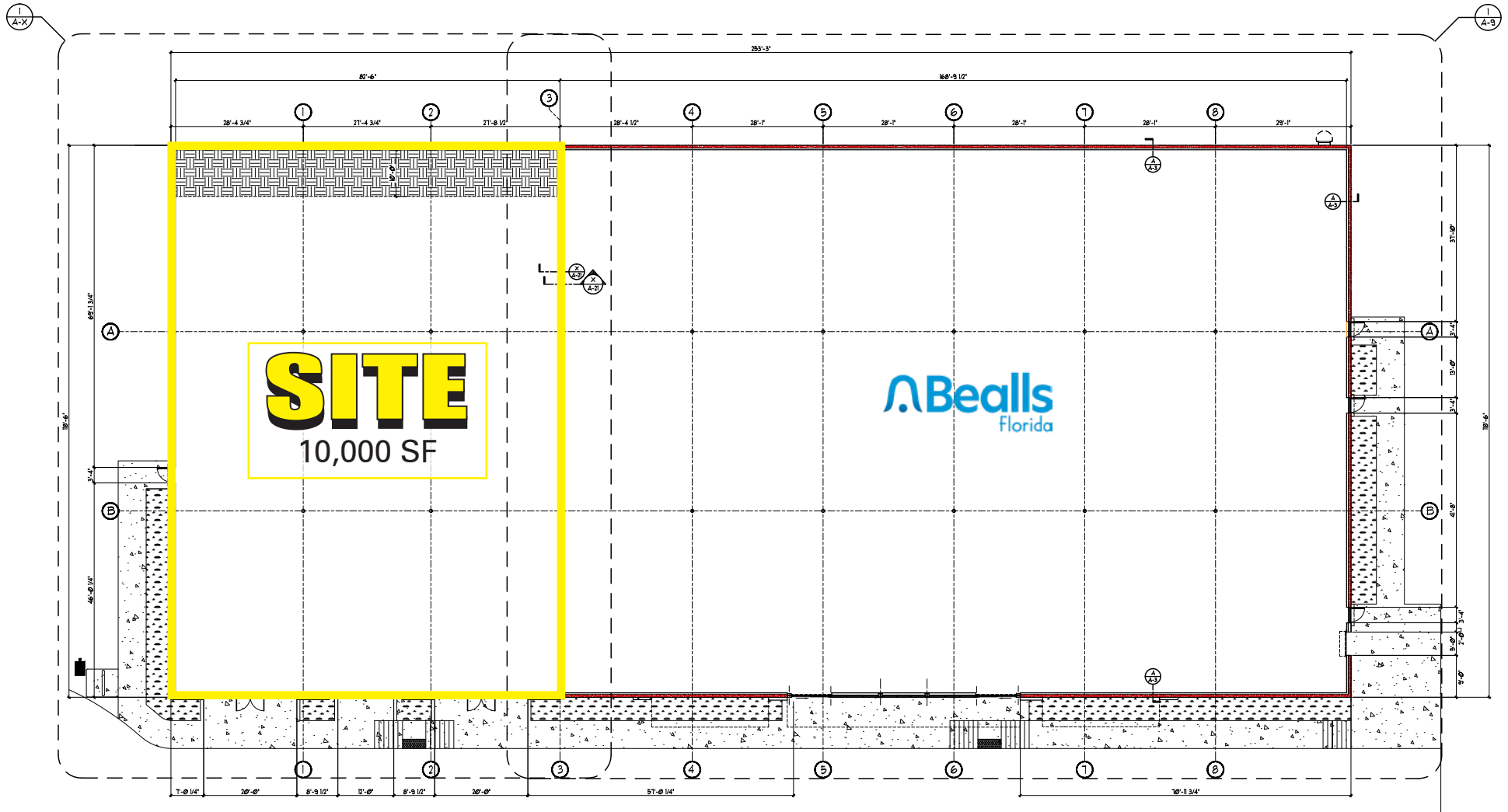
PROPOSED
MULTI FAMILY
REDEVELOPMENT

SITE

SITE
AERIAL



FLOOR PLAN



CAPE CORAL

CORALWOOD SHOPPING CENTER



42,500 ADT

60,500 ADT



34,500 ADT

Cape Coral Pkwy

37,000 ADT

54,000 ADT



Publix



McGregor Blvd

Summerlin Rd

36,500 ADT

33,000 ADT

FORT MYERS, FL

11560 MAJESTIC PALMS BLVD

10,000 SF AVAILABLE FOR LEASE

MATT LYNCH

561.424.3019

MLYNCH@ATLANTICRETAIL.COM

TRAVIS LANGHORST

561.424.3026

TLANGHORST@ATLANTICRETAIL.COM



ALBANY
ATLANTA
BOSTON
CHARLOTTE
LOS ANGELES
NEW YORK CITY
ORLANDO
PITTSBURGH
WEST PALM BEACH

HOLTEC BUILDING
1001 N US HWY ONE, SUITE 600
JUPITER, FL 33477
561.427.6699

WWW.ATLANTICRETAIL.COM

[LINKEDIN.COM/COMPANY/ATLANTIC-RETAIL-PROPERTIES](https://www.linkedin.com/company/atlantic-retail-properties)

[INSTAGRAM.COM/ATLANTIC_RETAIL/](https://www.instagram.com/atlantic_retail/)

