



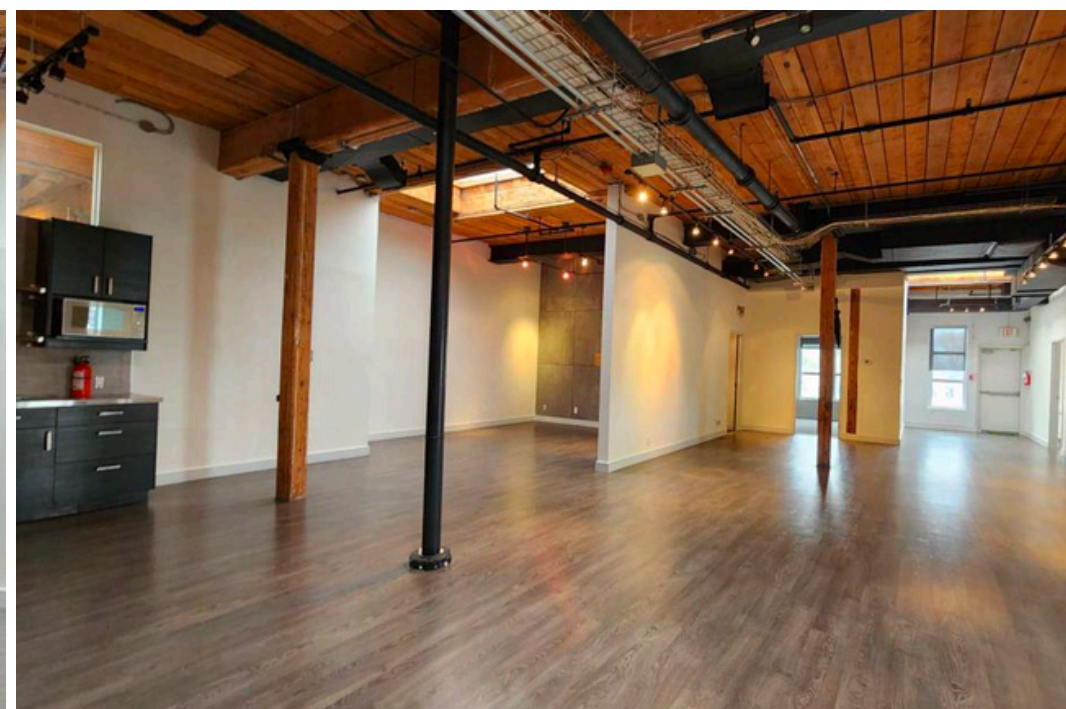
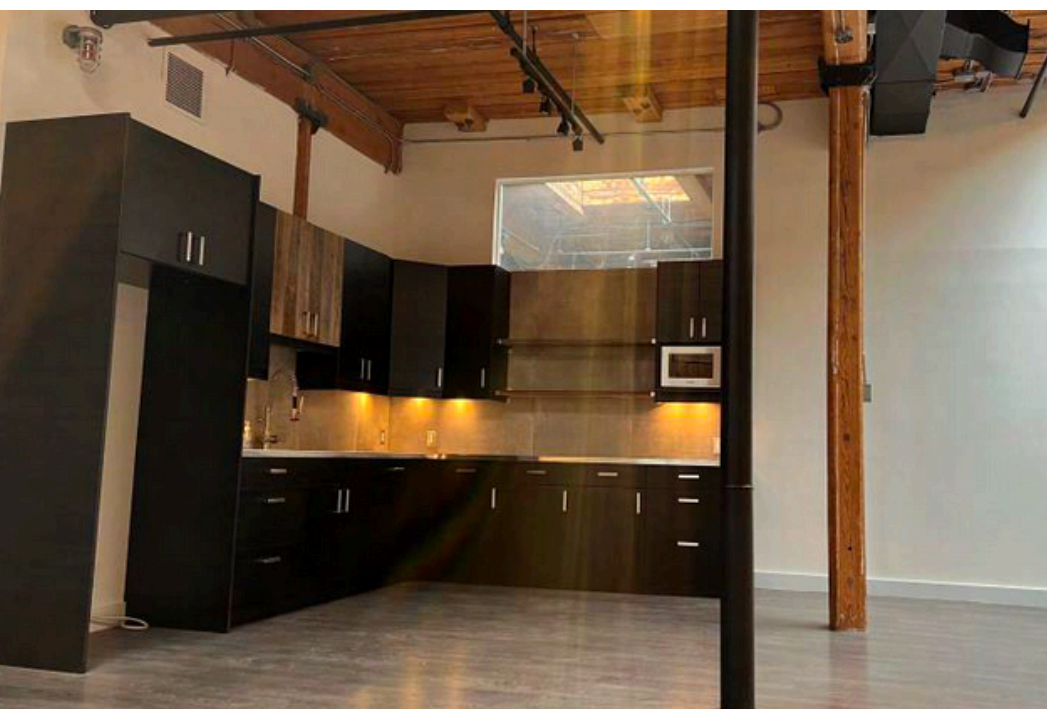
## THE KENT McCLAIN LTD FACTORY (1911)

- Located at Carlaw & Queen
- Chocolate Syrup Factory converted to office and film space in the heart of Leslieville
- Units 212 & 214: 475 SF each and can be combined
- Unit 254: 2,040 SF
- Unit 312: 5,150 SF (divisible)
  - Rental Rate: \$41.00 semi-gross + Hydro + HST
- Unit 314: 2,150 SF
- Prime Fully Built Out Brick & Beam Office
- Reception
- Boardroom
- Private Offices
- Kitchen
- 13' High Ceilings – Wood Decking
- Hardwood Flooring
- South & East Facing Large Picture Windows
- 5 Large Sky-Lights
- Call broker for rates

# 181 CARLAW AVENUE

## FOR LEASE

CHRIS WALASEK  
Broker  
647-407-8728  
chris@gitalis.com



**CHRIS WALASEK**  
Broker  
647-407-8728  
chris@gitalis.com

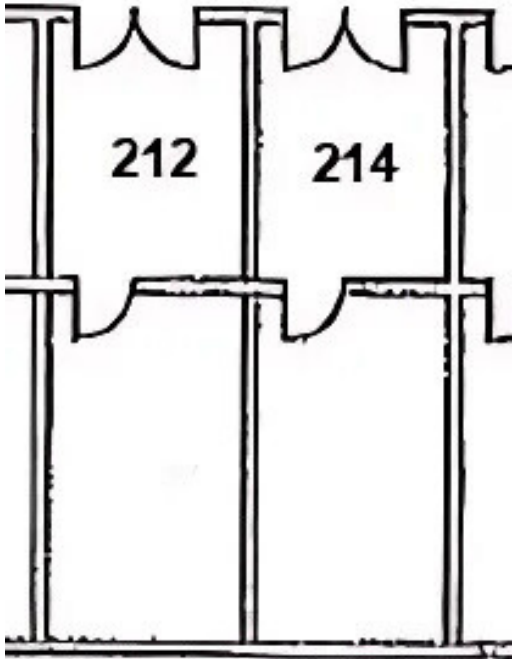




**CHRIS WALASEK**  
Broker  
647-407-8728  
chris@gitalis.com



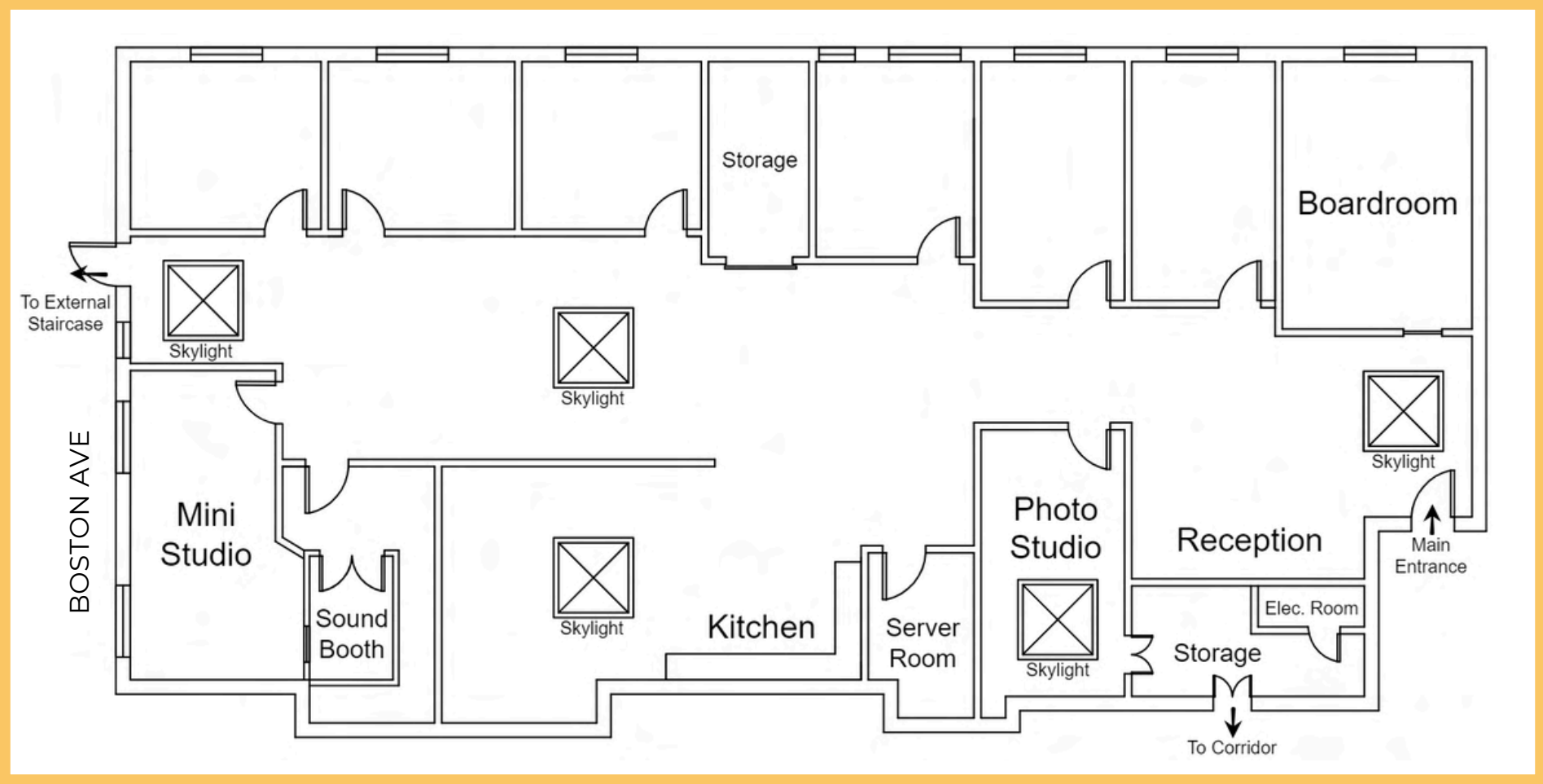
SUITE 212/214 - 960SF



CHRIS WALASEK  
Broker  
647-407-8728  
chris@gitalis.com



# SUITE 312



**CHRIS WALASEK**  
Broker  
647-407-8728  
chris@gitalis.com





# KENT-McCLAIN, LTD. FACTORY 1911

This three-storey factory was built in the Edwardian Classical style by Kent-McClain, shop fitters and makers of store display cases. It was later a bottling plant and a chocolate syrup factory before being altered to accommodate multiple businesses.

HERITAGE TORONTO 2018

CHRIS WALASEK  
Broker  
647-407-8728  
chris@gitalis.com

THE INFORMATION CONTAINED HEREIN HAS BEEN PROVIDED TO GITALIS REAL ESTATE INC., BROKERAGE FROM SOURCES DEEMED RELIABLE AND CORRECT, HOWEVER WE DO NOT WARRANT ITS ACCURACY OR ASSUME ANY RESPONSIBILITY OR LIABILITY OF ANY KIND WHATSOEVER WITH RESPECT TO THE ACCURACY OF THE INFORMATION CONTAINED HEREIN. ALL PERSONS ARE ADVISED TO INDEPENDENTLY VERIFY THE INFORMATION. THE INFORMATION HEREIN IS SUBJECT TO ERRORS, OMISSIONS, CHANGE OF PRICE, RENTAL OR OTHER CONDITIONS, PRIOR SALE OR WITHDRAWAL AT ANY TIME WITHOUT NOTICE.



GITALIS  
REAL  
ESTATE