



OFFICE FOR LEASE

AVAILABILITIES

10,322 RSF of Versatile, Modern Loft-Style Space:

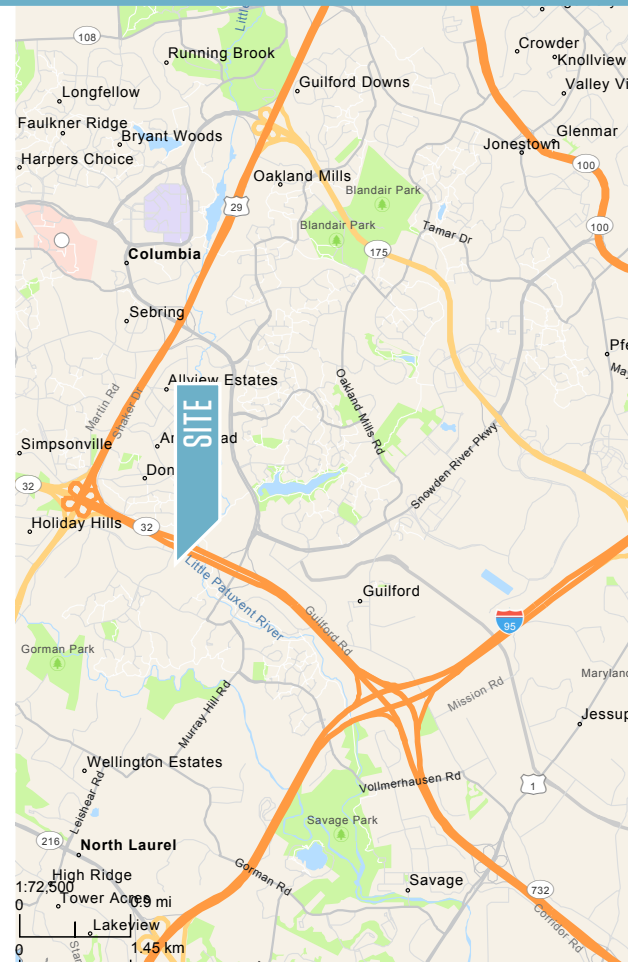
- 4,416 RSF Main Level Space, 3,284 RSF Atrium Loft Space, and 2,622 RSF Windowed Lower-Level Space (loading component)
- At-grade entry on main and lower levels with dedicated internal stairways connecting entire space

Current Suite Configurations:

- **R-250: 3,371 RSF**
 - » 2,900 RSF Main Level Space with 471 RSF of Atrium Loft Space
 - » 4 offices, reception area, 2 restrooms, kitchen, and windowed loft overlooking main level
- **L-261: 4,329 RSF**
 - » 1,516 RSF Main Level Space with 2,813 RSF of Atrium Loft Space
 - » Large reception area, large conference room, 2 bathrooms, kitchenette, and 6 loft offices
- **Q-180: 2,622**
 - » Windowed Lower-Level Space with dedicated at-grade entry and outdoor courtyard
 - » Very open plan with drive-up loading door

Combined Suite Options:

- **R-250/L-261/Q-180: 10,322 RSF**
- **R-250/L-261: 7,700 RSF of Main Level and Atrium Loft Space**
- **R-250/Q-180: 5,993 RSF of Main Level and Lower-Level Space**

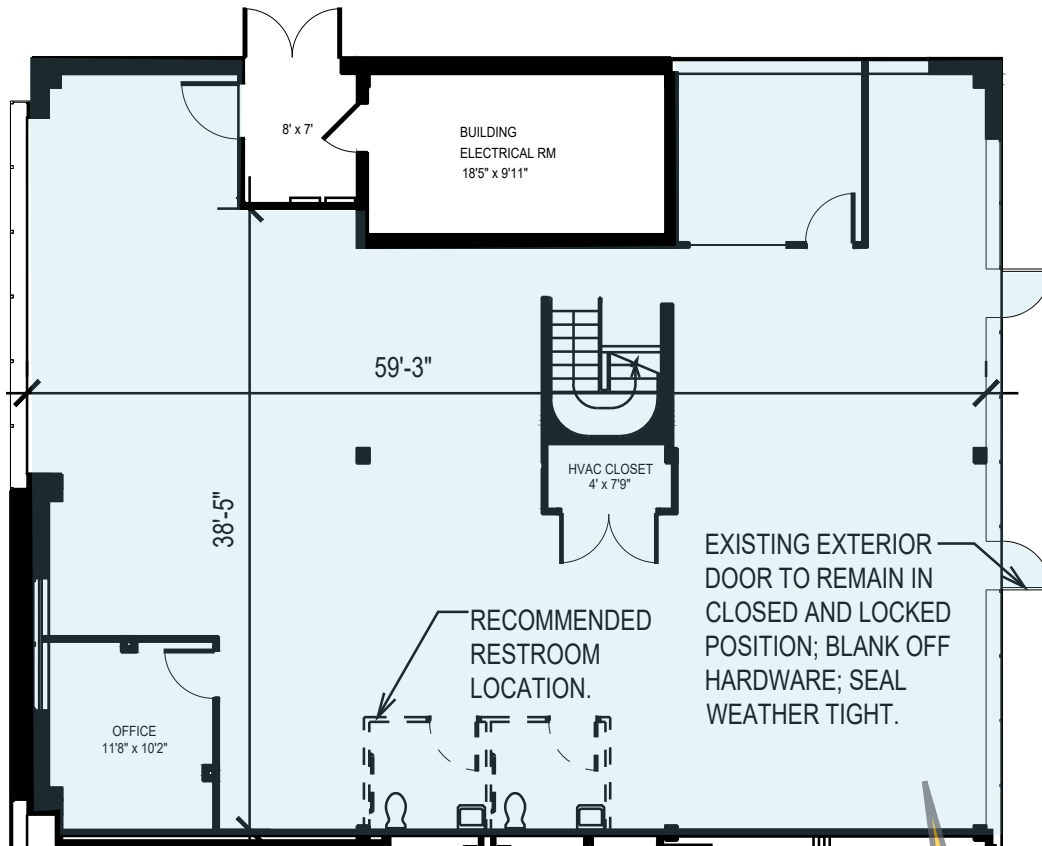


Spence Daw
sdaw@klnb.com
443-574-1429

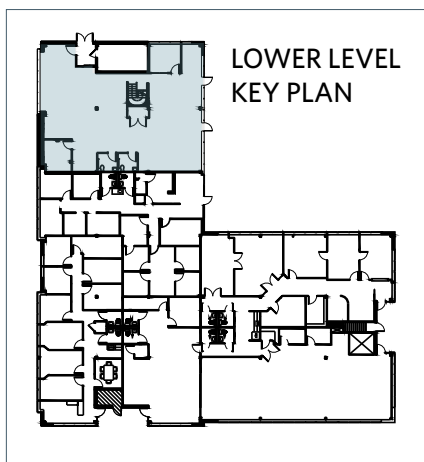
Abby Glassberg
aglassberg@klnb.com
443-574-1433

9881 Broken Land Pkwy, #300
Columbia, MD 21046
klnb.com

FLOOR PLANS - 2,622 SF CONTIGUOUS



Lower Level
2,622 RSF



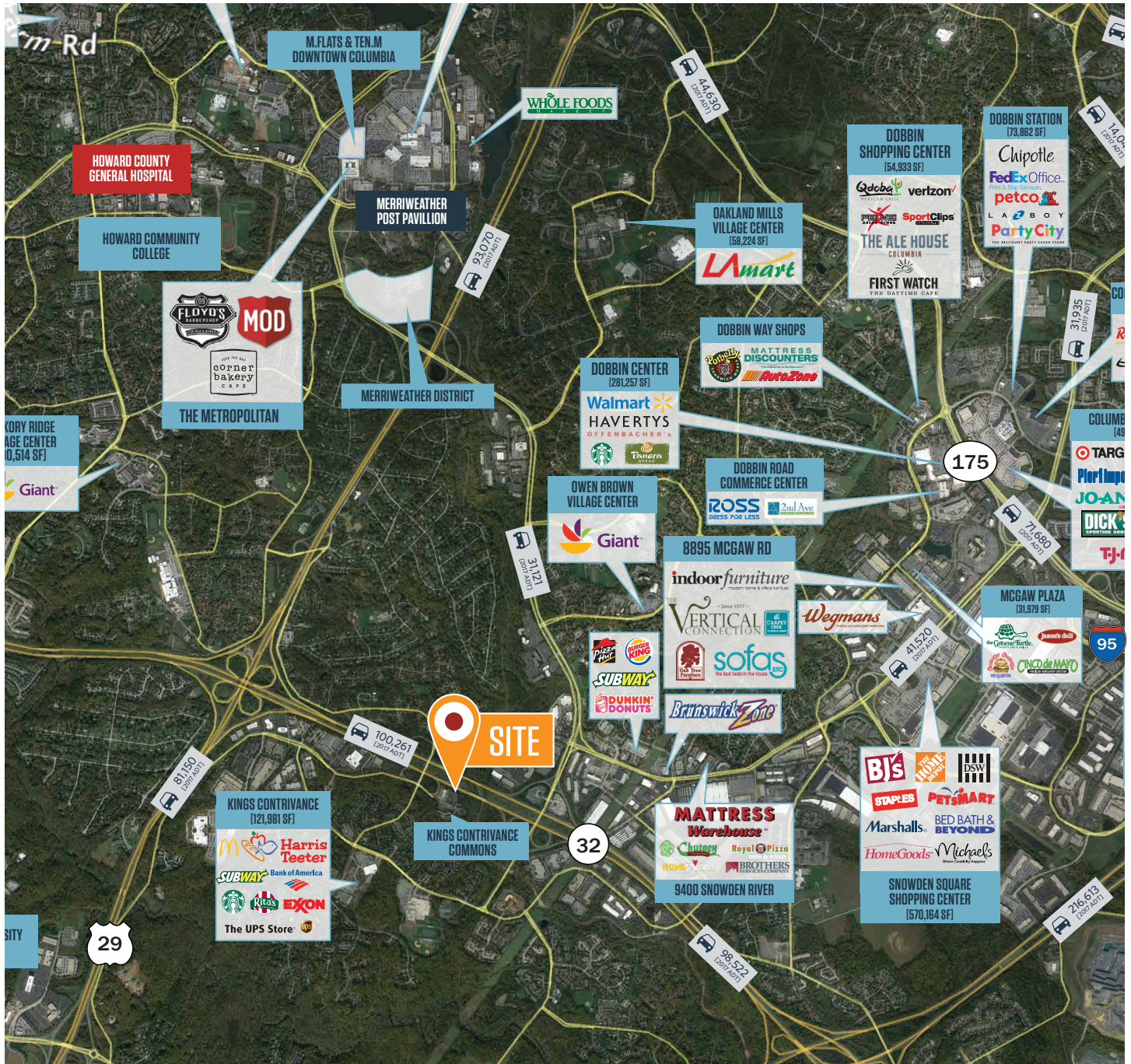
**Could Be Leased Individually
with Dedicated Entry OR
Combined With Upper Levels**

10005 OLD COLUMBIA RD

Columbia, MD 21046 | Howard County



MARKET AERIAL



While we have no reason to doubt the accuracy of any of the information supplied, we cannot, and do not, guarantee its accuracy. All information should be independently verified prior to a purchase or lease of the property. We are not responsible for errors, omissions, misuse, or misinterpretation of information contained herein and make no warranty of any kind, express or implied, with respect to the property or any other matters.

Spence Daw
sdaw@klnb.com
443-574-1429

Abby Glassberg
aglassberg@klnb.com
443-574-1433

9881 Broken Land Pkwy, #300
Columbia, MD 21046
klnb.com