

1 BEDFORD ROW

1 Bedford Row, London,
WC1R 4BU



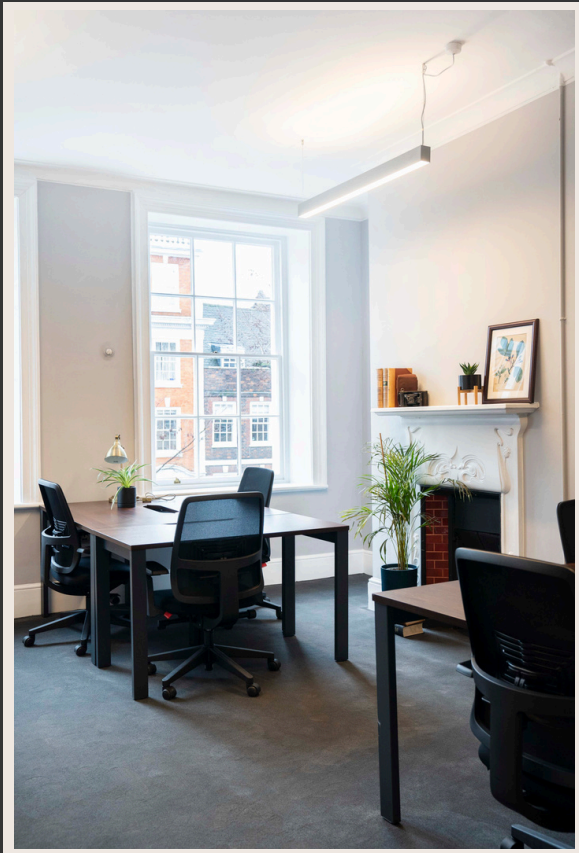
PRIVATE OFFICES
&
BUSINESS MEMBERS CLUB



This beautiful 300-year-old mansion features a classically elegant interior, high ceilings and traditional Georgian architecture.

We have utilised the quirky features of the building to make it a place of wonder – the perfect exploring opportunity when you feel like taking a break away from your desk. Relax with a coffee in “The Vault” or hold a meeting in the courtyards.



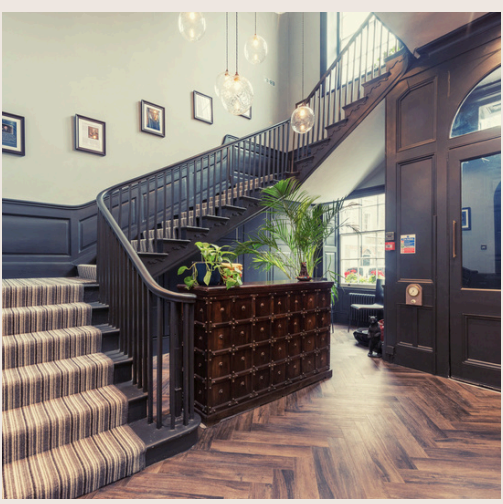
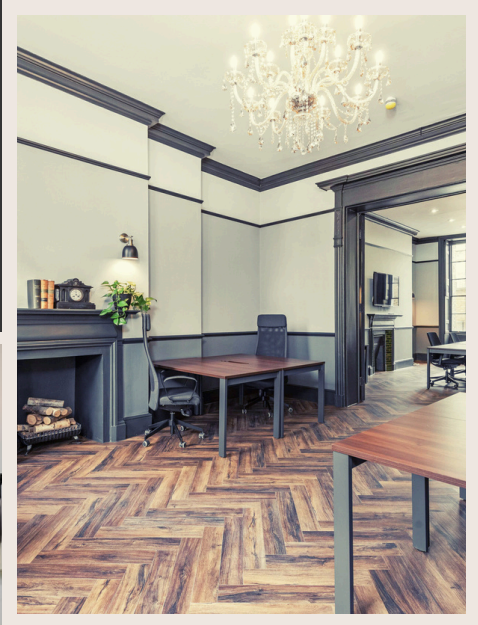


Hold meetings in our luxury boardrooms.



Your private office will feature an ergonomic design, complete with high-quality furniture and customizable options tailored to meet your specific needs. All offices boast large windows, high ceilings, and charming period features like fireplaces, adding character and elegance to your workspace.

Beyond the grand reception area, there are 27 private offices and 11 communal spaces.



REGULAR MEMBER EVENTS & FREE BAR



Our inviting communal spaces, passionate team on standby, regular community-building events, and free bar(!), have created a supportive and fun community atmosphere for our members, who are all small-to-medium sized businesses.



"SELECTED FOR LOCATION, BUT **STAYED FOR THE SERVICE!** If you choose to take space here, you will be very happy. There is a real community feel within the building, spearheaded by Maria and her team that run the building. They provide a real personal touch and they run some really fun events! Highly recommended!"

-Graham S

"Maria and Ana run the place very well. If things break, **they get it fixed quickly** with a minimum of fuss. There is a high degree of cleanliness."

— Steve Evans, FDU

"We are tenants at The Office and couldn't be more pleased to be here! Ana and Maria do a stellar job of running the day-to-day and are always there to ensure everything is going as smoothly as it should be. The communal spaces are well maintained and stocked (Nespresso, fruits, milk & alternatives. etc.) and create a **very social atmosphere in the building.** It has been an absolute pleasure coming in to work here :)"

-Ilan OBADIA

Each Drayton property is overseen by a dedicated "Head of House"—a highly skilled, dynamic, and multi-talented professional. Your Head of House is committed to delivering a 5-star concierge experience for your business, ensuring every detail is taken care of. From warmly welcoming your important clients with a smile and a freshly brewed coffee, to managing your mail, printing, scanning, and overseeing facilities.



MAKE 1 BEDFORD ROW YOUR BUSINESS ADDRESS

Proudly greet your clients at this prestigious, iconic London address.



THE PERFECT LOCATION

Chancery Lane (Central Line) and Holborn (Central and Piccadilly Lines) are just a 5-minute walk away.

1 Bedford Row is surrounded by cafés, restaurants, and pubs – ideal for an after-work get-together. A gorgeous park, Lincoln's Inn Fields, resides opposite – a perfect detox from the bustling city atmosphere should you need a break from work.


An Iconic Location, Steeped in History

One of the many attractions of 1, Bedford Row is the rich history of the building. Built in 1718, previous illustrious inhabitants include the Duchess of Chandos, Cassandra Willoughby; and James Bonner, a barrister at Doctors' Commons (1724) amongst many others. 1, Bedford Row was occupied for over 200 years by the prestigious law firm Gregory, Rowcliffe and Milners from 1807 until 2022. It also featured in the recent adaptation of Sherlock Holmes starring Ian McKellan, chosen for its unspoilt Georgian architecture.

Lastly, for you rugby fans out there: in 1871, the Proposed Laws of the Game by the Rugby Football Union were written and signed in No.1, Bedford Row!



OUR FULLY-EQUIPPED, PRIVATE OFFICES HAVE EVERYTHING TAKEN CARE OF:

- Members events
 - Complimentary fresh fruit
 - Complimentary bar (alcoholic & non-alcoholic options)
 - Spacious offices with high-quality furniture
 - Luxury Boardrooms for up to 15 people
 - Fast Fibre Wi-Fi connectivity for you and your guests, in every corner of the building
 - A friendly member of the Front of House team is on hand Mon-Fri, 08:30-17:30 to greet your clients
 - Shower rooms & bike storage
 - Air conditioning throughout
 - Self-contained kitchen with complimentary tea and high quality coffee
 - 24/7 access
 - Business rates, daily cleaning, utilities and facilities management all included
- 



We believe our serviced offices are unparalleled in Holborn. They are designed to cater to your every need, ensuring your team can focus on what really matters - your business.



BOOK YOUR PERSONAL TOUR TODAY

Lydia
07834362588
lydia@theoffice.co.uk

WWW.DRAYTON.ORG



DRAYTON