

26640-50 Western Ave, Harbor City CA

90710 NEC Western & Palos Verdes

FOR LEASE



PROPERTY DESCRIPTION Available

Space:

E-1 7,266 RSF -retail or distribution

K-1 1,484 RSF

26650 B 1,500 RSF

PROPERTY HIGHLIGHTS Signalized

Corner

Approx. 73,000 cars per day Gateway to

Rancho Palos Verdes

JOIN NEIGHBORING TENANTS



FOR ADDITIONAL INFORMATION PLEASE CONTACT

Danny Raffle CCIM 424 281-3701

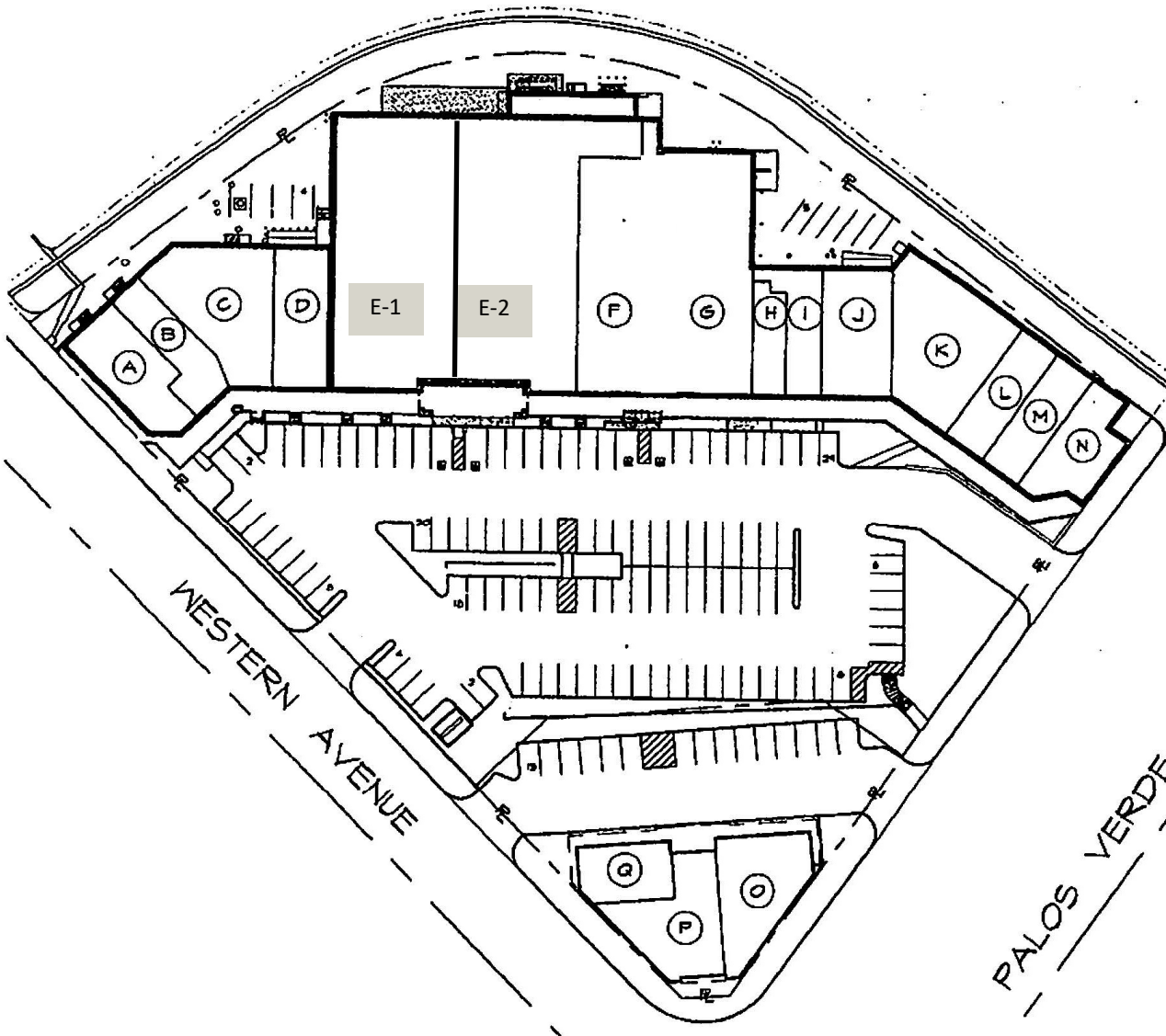
Draffle@rpmres.com

DRE# 01361833

RPM Commercial Real Estate 525 S Douglas Street, Suite 270, El Segundo, CA 90245 www.rpmres.com

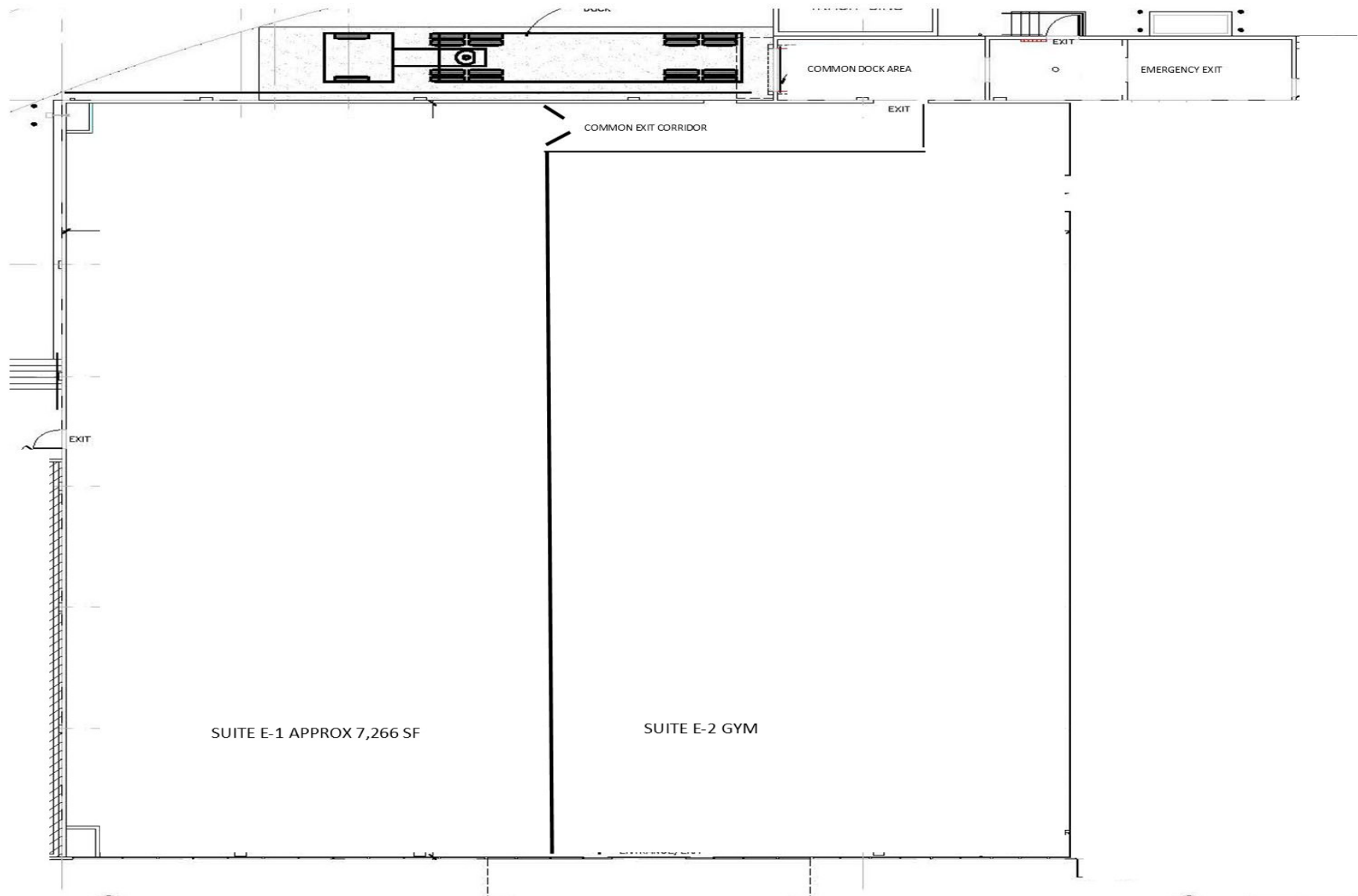
No warranty or representation is made as to the accuracy of the foregoing information. Terms of lease and availability are subject to change without notice. Reference to square footage are approximate.





- A-B CHICKEN MAISON
- C VETERINARY CLINIC
- D DRY CLEANERS
- E-1 AVAILABLE 7,266 RSF
- E-2 SB STRENGTH CO
- F-G ASSURANCE LEARNING
- H NAIL SALON
- I DENTIST
- J JUI JITSU
- K1 AVAILABLE 1,500 rsf
- K2 ACUPUNTURE CLINIC
- L RAMAN NOODLE
- M MEXICAN BREAKFAST
- N COFFEE
- C HOMESTREET BANK
- B AVAILABLE 1,500 RSF
- C SMOKE SHOP





RPM Commercial Real Estate 525 S Douglas Street, Suite 270, El Segundo, CA 90245 www.rpmres.com



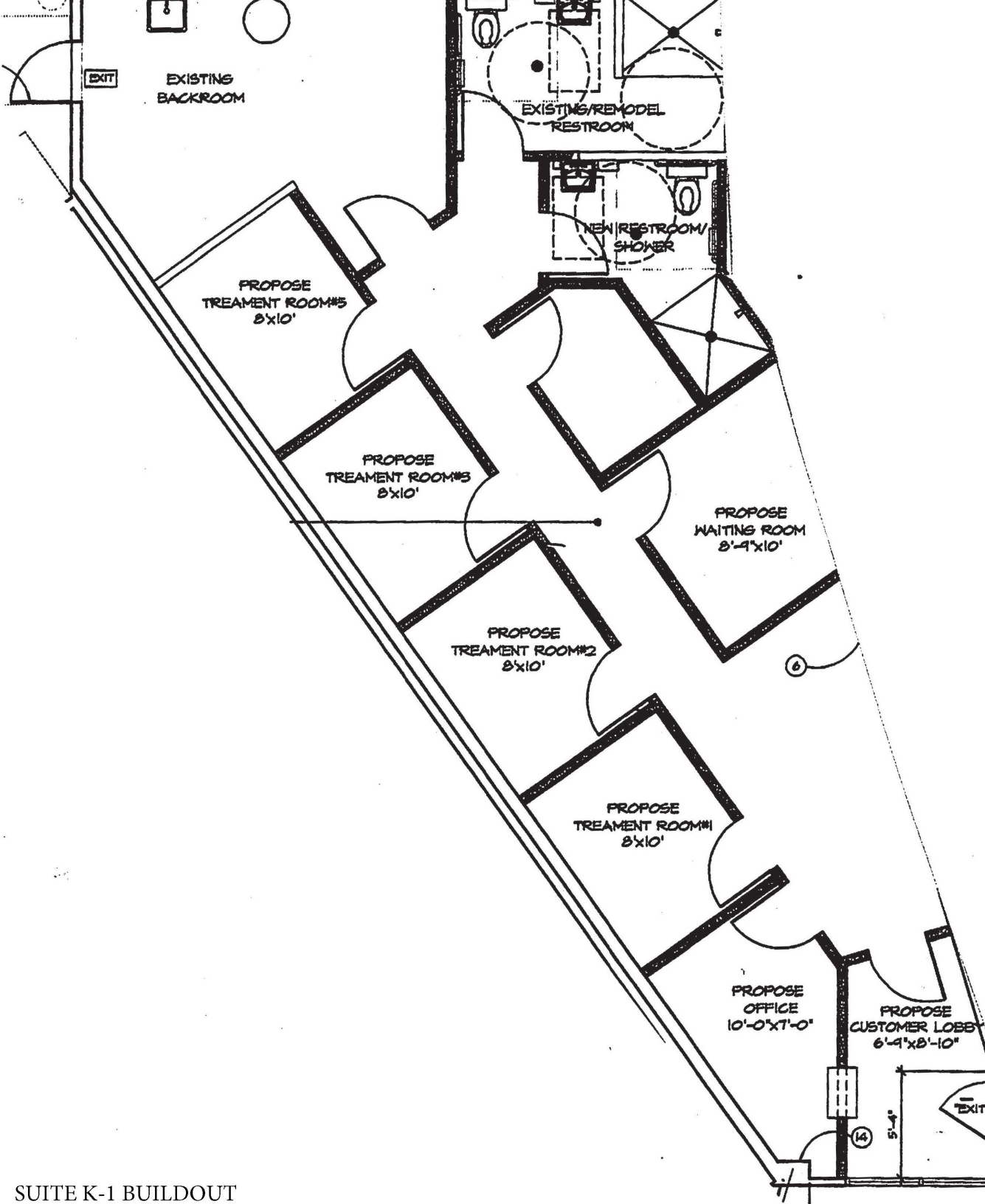
ROLLING HILLS VIEW CENTER STREET CORNER SPACE AVAILABLE



26650 S WESTERN SUITE B

RPM Commercial Real Estate 525 S Douglas Street, Suite 270, El Segundo, CA 90245 www.rpmres.com





SUITE K-1 BUILDOUT