

FOR LEASE

9816 BUSINESS PARK DR. #C, SACRAMENTO

±4,440 SF AVAILABLE

LEASE RATE: \$1.05 PSF NNN



MATT SUSAC

First Vice President
P: 916 781 4832
matt.susac@cbre.com
Lic. 01979110

TYLER HOWELL

Senior Associate
P: 916 781 4835
tyler.howell1@cbre.com
Lic. 02100245



FOR LEASE OFFICE | WAREHOUSE

9816 BUSINESS PARK DR.
SACRAMENTO, CA

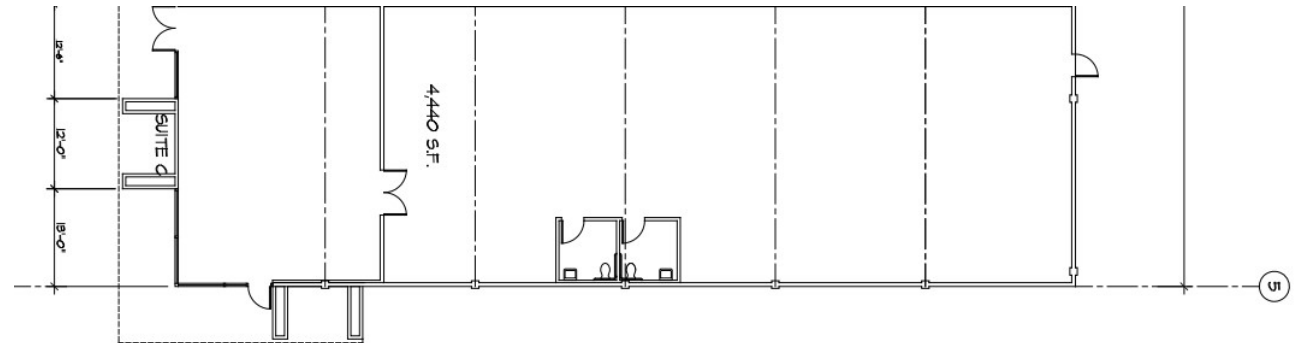


PROPERTY DETAILS

- ±4,440 SF TOTAL AVAILABLE
- ±500 SF OFFICE
- ONE (1) GRADE LEVEL DOOR
- GREAT FREEWAY SIGNAGE
- QUICK ACCESS TO HIGHWAY 50
- CLOSE TO SHOPPING, RESTAURANTS, AND OTHER AMENITIES
- ZONED: OIMU



FLOOR PLAN



FOR LEASE OFFICE | WAREHOUSE

9816 BUSINESS PARK DR.
SACRAMENTO, CA

AERIAL & AREA MAP



© 2023 CBRE, Inc. All rights reserved. This information has been obtained from sources believed reliable, but has not been verified for accuracy or completeness. You should conduct a careful, independent investigation of the property and verify all information. Any reliance on this information is solely at your own risk. CBRE and the CBRE logo are service marks of CBRE, Inc. All other marks displayed on this document are the property of their respective owners, and the use of such logos does not imply any affiliation with or endorsement of CBRE. Photos herein are the property of their respective owners. Use of these images without the express written consent of the owner is prohibited.