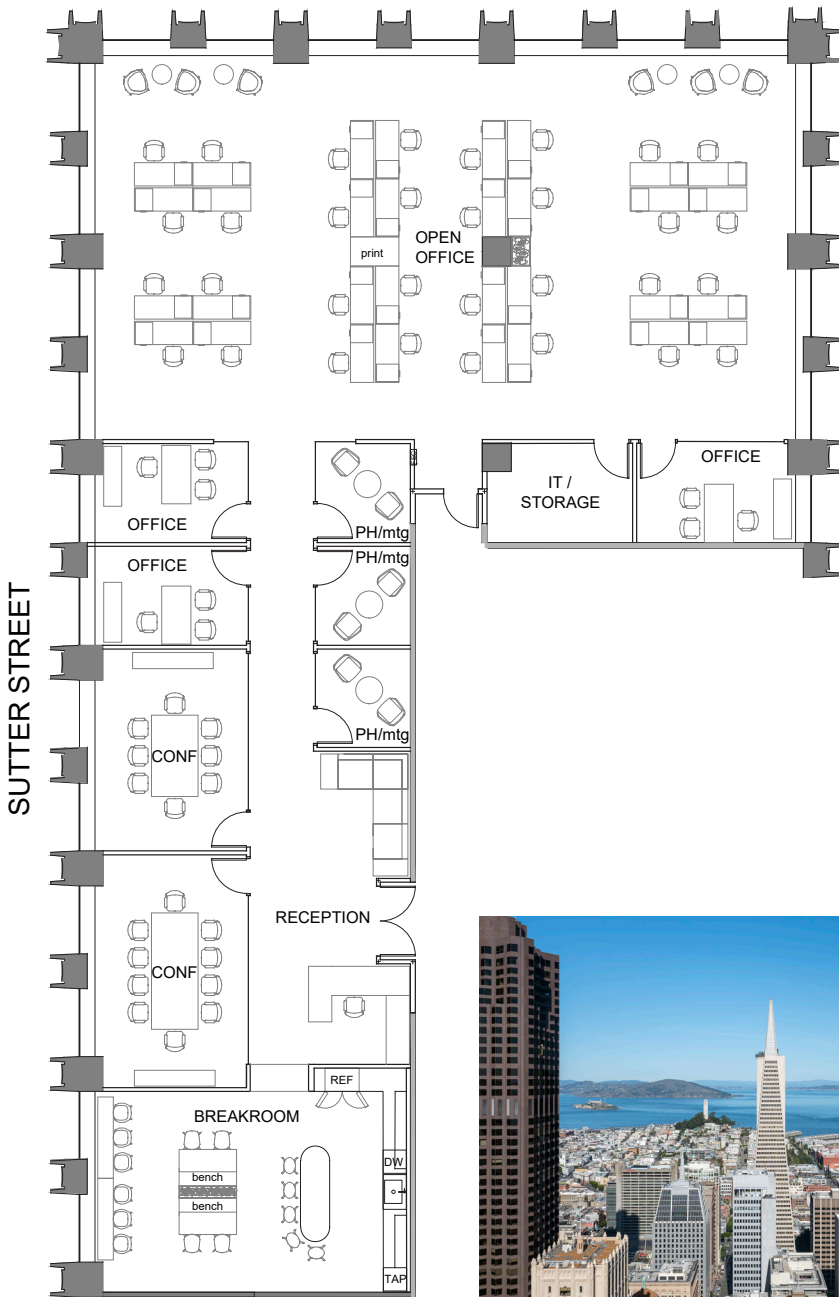
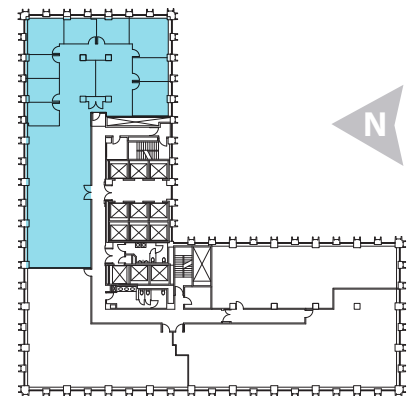


SUITE 2900

5,969 rsf | available now for TI's



- Hypothetical plan
- Available now for TI
- Bright corner suite with Iconic views
- 3 private offices
- 3 phone/meeting rooms
- 2 conference rooms
- Break room and coffee bar
- Open area for ±32 workstations
- Tenant lounge / collaboration area
- IT room



Kelly Glass
415 322 5062
kelly.glass@avisonyoung.com
Re Lic: 01335179

Colton Hanley
415 301 3181
colton.hanley@avisonyoung.com
Re Lic: 02089768

Elliot Ashkenazy
415 596 6886
elliot.ashkenazy@avisonyoung.com
Re Lic: 02280616

