

RIDDLE
ASSOCIATES Inc.
Commercial Real Estate

OFFICE / WAREHOUSE SPACE **FOR LEASE**

500 Freeman Avenue, Suites 102-103 | Chesapeake, VA



- AVAILABLE 7/01/2026
- LEASE RATE: \$12.50/SF NNN at \$2.00/SF
- 3,000 SF (Five offices, reception, two bathrooms)
- Zoned M2
- 3-phase power, 14' ceiling height, two 10' x 12' grade door, HVAC heat pump and gas.

EXCLUSIVELY OFFERED BY:

LARRY RUMSEY | lrumsey@riddleassociates.com | 757.353.2473

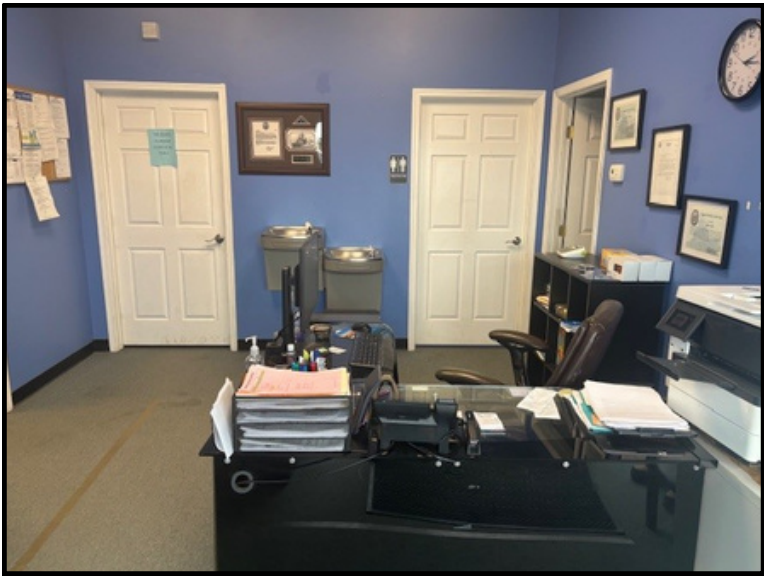
CALL TODAY FOR PRICING AND TO SCHEDULE YOUR PRIVATE TOUR!

RIDDLE ASSOCIATES, INC.
Commercial Real Estate

“Real Estate Services Tailored to Your Needs”

The information presented in this marketing flyer is obtained from sources believed to be reliable, but is not warranted. This offer is subject to prior sale or lease, errors, omissions or withdrawal without notice.

530 Woodlake Circle • Suite 100 • Chesapeake, VA 23320 • www.riddleassociates.com



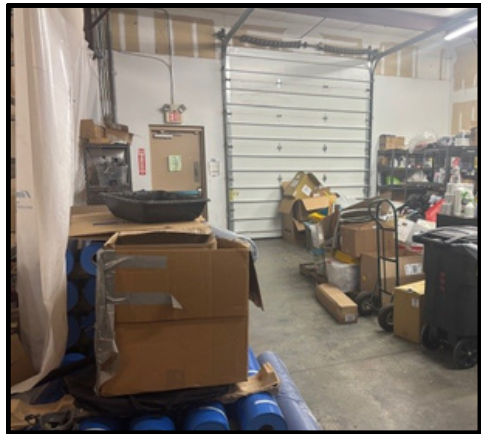
RIDDLE ASSOCIATES, INC.

Commercial Real Estate

“Real Estate Services Tailored to Your Needs”

The information presented in this marketing flyer is obtained from sources believed to be reliable, but is not warranted. This offer is subject to prior sale or lease, errors, omissions or withdrawal without notice.

530 Woodlake Circle • Suite 100 • Chesapeake, VA 23320 • www.riddleassociates.com



RIDDLE ASSOCIATES, INC.

Commercial Real Estate

“Real Estate Services Tailored to Your Needs”

The information presented in this marketing flyer is obtained from sources believed to be reliable, but is not warranted. This offer is subject to prior sale or lease, errors, omissions or withdrawal without notice.

530 Woodlake Circle • Suite 100 • Chesapeake, VA 23320 • www.riddleassociates.com



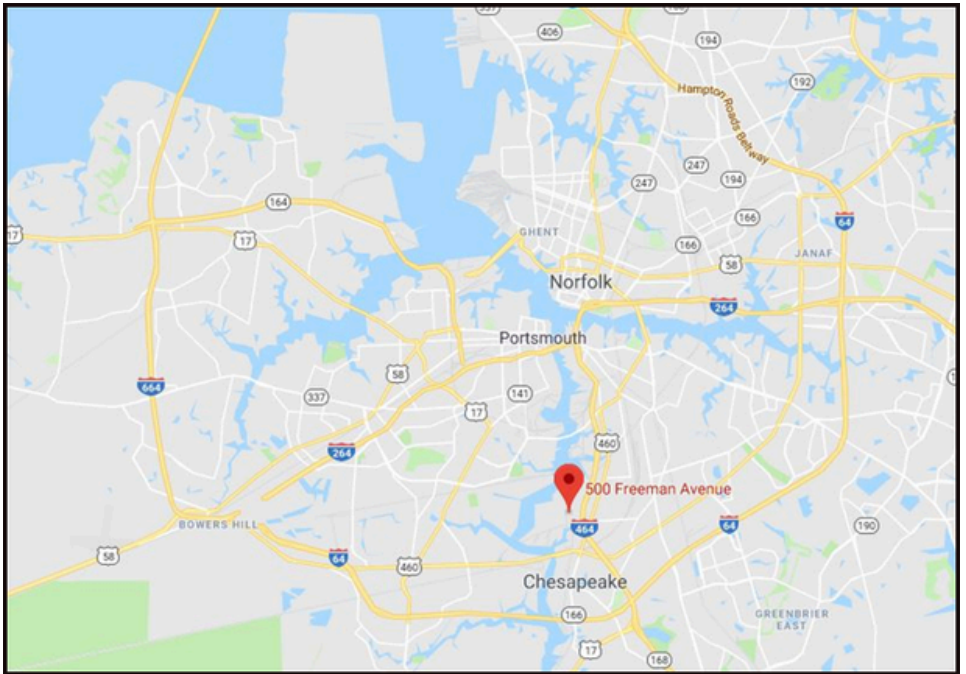
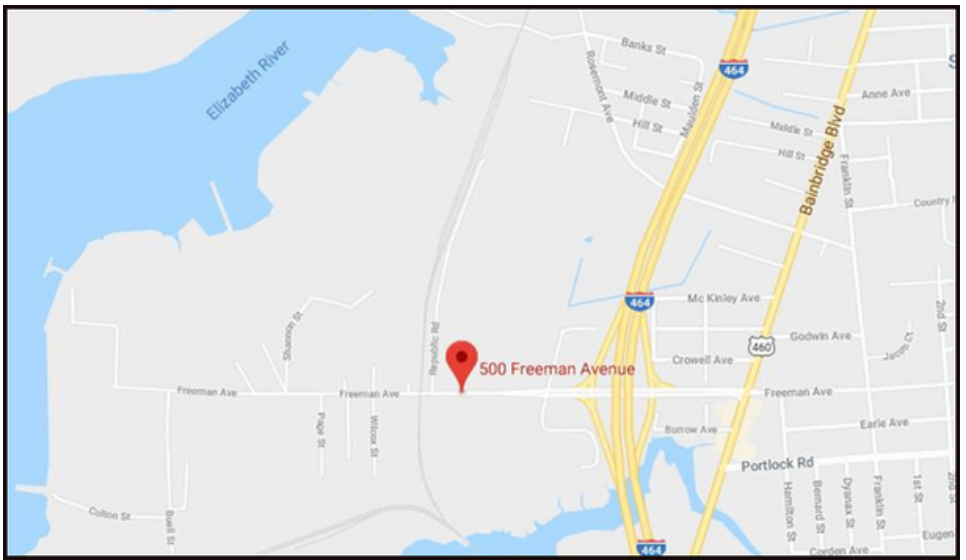
RIDDLE ASSOCIATES, INC.

Commercial Real Estate

“Real Estate Services Tailored to Your Needs”

The information presented in this marketing flyer is obtained from sources believed to be reliable, but is not warranted. This offer is subject to prior sale or lease, errors, omissions or withdrawal without notice.

530 Woodlake Circle • Suite 100 • Chesapeake, VA 23320 • www.riddleassociates.com



RIDDLE ASSOCIATES, INC.

Commercial Real Estate

“Real Estate Services Tailored to Your Needs”

The information presented in this marketing flyer is obtained from sources believed to be reliable, but is not warranted. This offer is subject to prior sale or lease, errors, omissions or withdrawal without notice.

530 Woodlake Circle • Suite 100 • Chesapeake, VA 23320 • www.riddleassociates.com