

# Professional Office for Lease

2,417± SF 2nd Floor Space with Private Offices  
9108 US Highway 19, Port Richey, FL 34668



**BERKSHIRE  
HATHAWAY**  
HomeServices

Florida Properties Group

COMMERCIAL DIVISION



## For Lease

- 2,417± SF 2<sup>nd</sup> floor office space; **Can Be Divided!!**
- Floorplan includes 7 private offices, a large conference room, breakroom, storage and 2 restrooms
- Elevator and stairwell accessible
- Excellent visibility and exposure
- 55,000 Daily Traffic on US Highway 19
- Lease Rate: \$14.00 PSF NNN



**Kristy Marcelle**

Sales & Leasing Associate  
727-239-9424  
kmarcelle@bhhsflpg.com

Awarded #2 Producing Berkshire Hathaway Commercial Real Estate Company 2019

**Teamwork | Integrity | Passion | Excellence**

4950 West Kennedy Boulevard, Suite 300, Tampa, FL 33609 | 7916 Evolutions Way, Suite 210, Trinity, FL 34655  
PH 813.739.5700 | bhhsflpgcommercial.com

# Professional Office for Lease

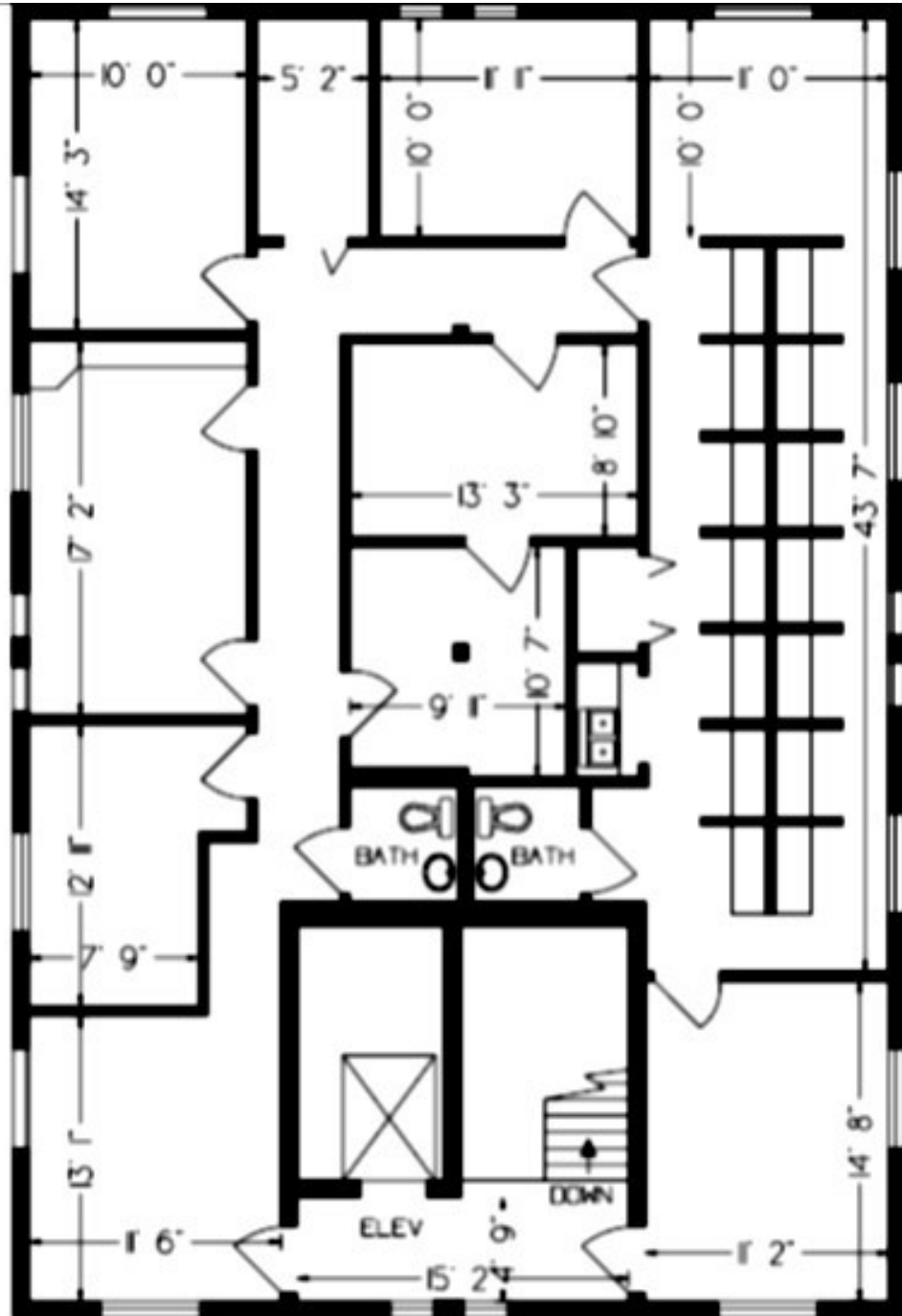
2,417± SF 2nd Floor Space with Private Offices  
9108 US Highway 19, Port Richey, FL 34668



**BERKSHIRE  
HATHAWAY**  
HomeServices

Florida Properties Group

COMMERCIAL DIVISION



2ND FLOOR

This information is from sources deemed to be reliable. We are not responsible for misstatements of facts, errors or omissions, prior sale, change of price, and/or terms or withdrawal from the market without notice. Buyer should verify all information with its' own representatives as well as state and local agencies. Brokers please note that a variable rate commission may exist on this offering that might result in a lower commission cost to the Seller if a Buyer's broker is not involved in the transaction. ©2022 BHH Affiliates, LLC. An independently owned and operated franchisee of BHH Affiliates, LLC. Berkshire Hathaway HomeServices and the Berkshire Hathaway HomeServices symbol are registered service marks of Columbia Insurance Company, a Berkshire Hathaway affiliate. EHO.

# Professional Office for Lease

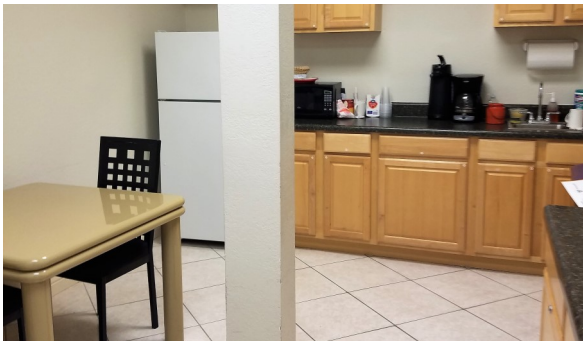
2,417± SF 2nd Floor Space with Private Offices  
9108 US Highway 19, Port Richey, FL 34668



**BERKSHIRE HATHAWAY**  
HomeServices

Florida Properties Group

COMMERCIAL DIVISION



## AREA DEMOGRAPHICS (5 MILE RADIUS)

### KEY FACTS

  
**124,910**  
Population

**51.0**

Median Age

**2.2**

Average Household Size

**120,479**

Daytime Population

### ANNUAL HOUSEHOLD SPENDING



**\$1,320**  
Apparel & Services



**\$105**  
Computers



**\$2,376**  
Eating Out



**\$3,618**  
Groceries



**\$4,388**  
Health Care

### INCOME



**\$42,083**  
Median Household Income



**\$25,663**  
Per Capita Income



**\$92,859**  
Median Net Worth

### EMPLOYMENT



**63%**  
White Collar



**22%**  
Blue Collar



**15%**  
Services

**4.9%**

Unemployment Rate

This information is from sources deemed to be reliable. We are not responsible for misstatements of facts, errors or omissions, prior sale, change of price, and/or terms or withdrawal from the market without notice. Buyer should verify all information with its' own representatives as well as state and local agencies. Brokers please note that a variable rate commission may exist on this offering that might result in a lower commission cost to the Seller if a Buyer's broker is not involved in the transaction. ©2022 BHH Affiliates, LLC. An independently owned and operated franchisee of BHH Affiliates, LLC. Berkshire Hathaway HomeServices and the Berkshire Hathaway HomeServices symbol are registered service marks of Columbia Insurance Company, a Berkshire Hathaway affiliate. EHO.