

HOFFNER FULFILLMENT CENTER

6210 HOFFNER AVENUE, ORLANDO, FL 32822



CONVENIENT ACCESS
TO SR 528 AND MCO

15,970 SF AVAILABLE
FOR SUBLEASE

SPACE HIGHLIGHTS

ASKING RATE

\$14.25/SF NNN

OPEX*

\$4.74 PSF

MONTHLY RATE

\$25,272.52/MO

WAREHOUSE SF

12,332 SF

OFFICE SF

3,638 SF

CLEAR HEIGHT

32'

FIRE SUPPRESSION

ESFR

PARKING RATIO

0.88/1,000 SF

ZONING

IND-1/IND-5

LOADING DOORS

6 DOCK HIGH
1 GRADE LEVEL

YEAR BUILT

2019

LEASE EXPIRATION

MARCH 31, 2028

*Denotes Estimated Operating Expenses for 2026

CONTACT INFORMATION

TAYLOR ZAMBITO

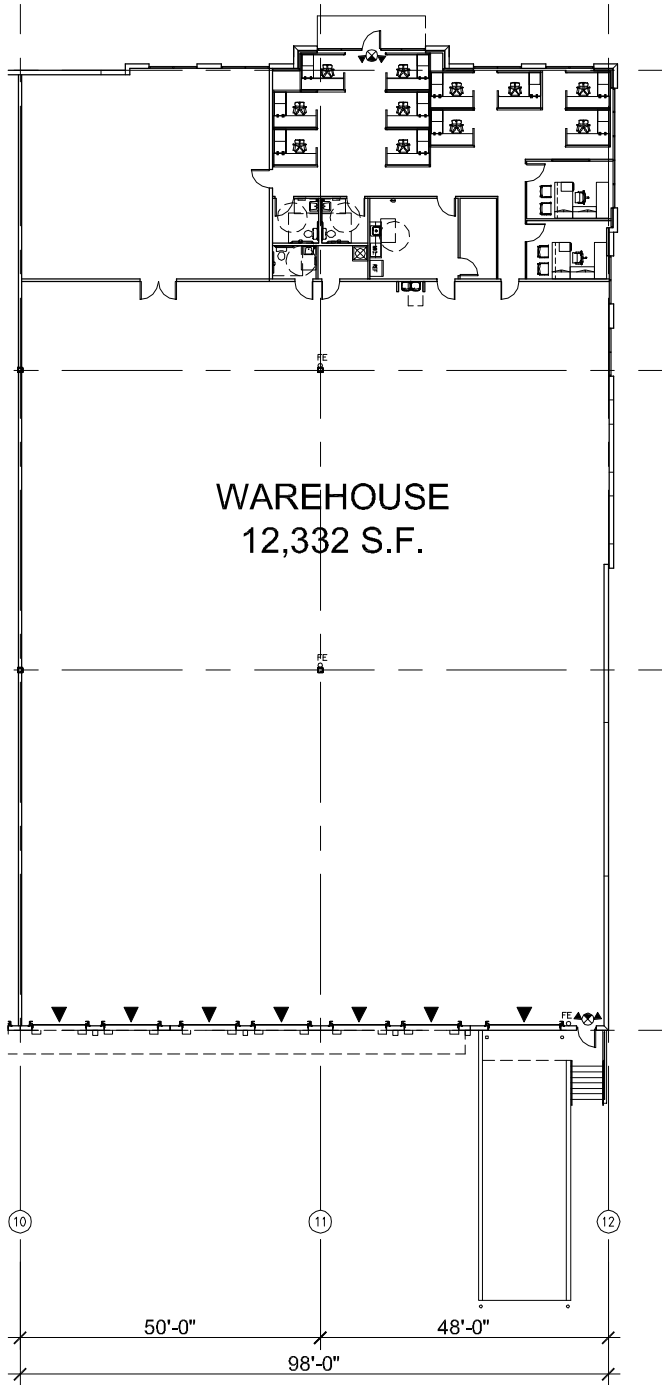
Senior Director
+1 407 541 4409
taylor.zambito@cushwake.com

RYAN HUBBARD

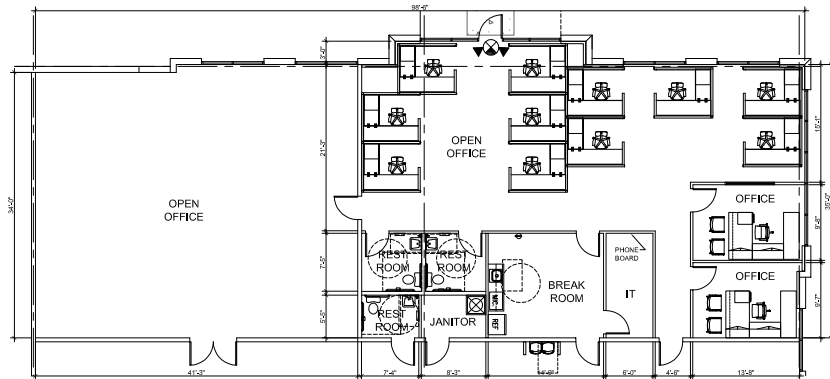
Director
+1 407 541 4390
ryan.hubbard@cushwake.com



6210 HOFFNER AVENUE
UNIT 160



OFFICE PLAN



CONTACT INFORMATION

TAYLOR ZAMBITO
Senior Director
+1 407 541 4409
taylor.zambito@cushwake.com

RYAN HUBBARD
Director
+1 407 541 4390
ryan.hubbard@cushwake.com

