



# Sears

6211 Leesburg Pike, Falls Church, VA 22044

Existing Sears & Sears Auto Center Available

## Space

Sears (Three Levels): 159,715 sf

Sears Auto Center: 10,050 sf

## Zoning

C-7 General Retail

## Possession

To Be Arranged

## Asking Rent

Available Upon Request

## Comments

- 159,715 sf space
- 5 acres along Leesburg Pike in Seven Corners
- Great visibility with 34,000 VPD on Leesburg Pike
- Great demographics in nation's 2nd wealthiest county, Fairfax County

## Demographics

Distance	'20 Pop	Avg. HHI	Households
1 Mile	25,409	\$141,989	9,521
3 Miles	222,517	\$155,723	89,627
5 Miles	581,165	\$152,805	250,472
10 Miles	1,867,649	\$158,515	794,695

## Co-Tenants



Andy Corno

+1 202 719 6137

andy.corno@am.jll.com

Thomas Jackman

+1 202 719 5624

thomas.jackman@am.jll.com

Arris Noble

+1 202 738 0406

arris.noble@am.jll.com



# Sears

6211 Leesburg Pike, Falls Church, VA 22044

Market Aerial



Sears

6211 Leesburg Pike, Falls Church, VA 22044

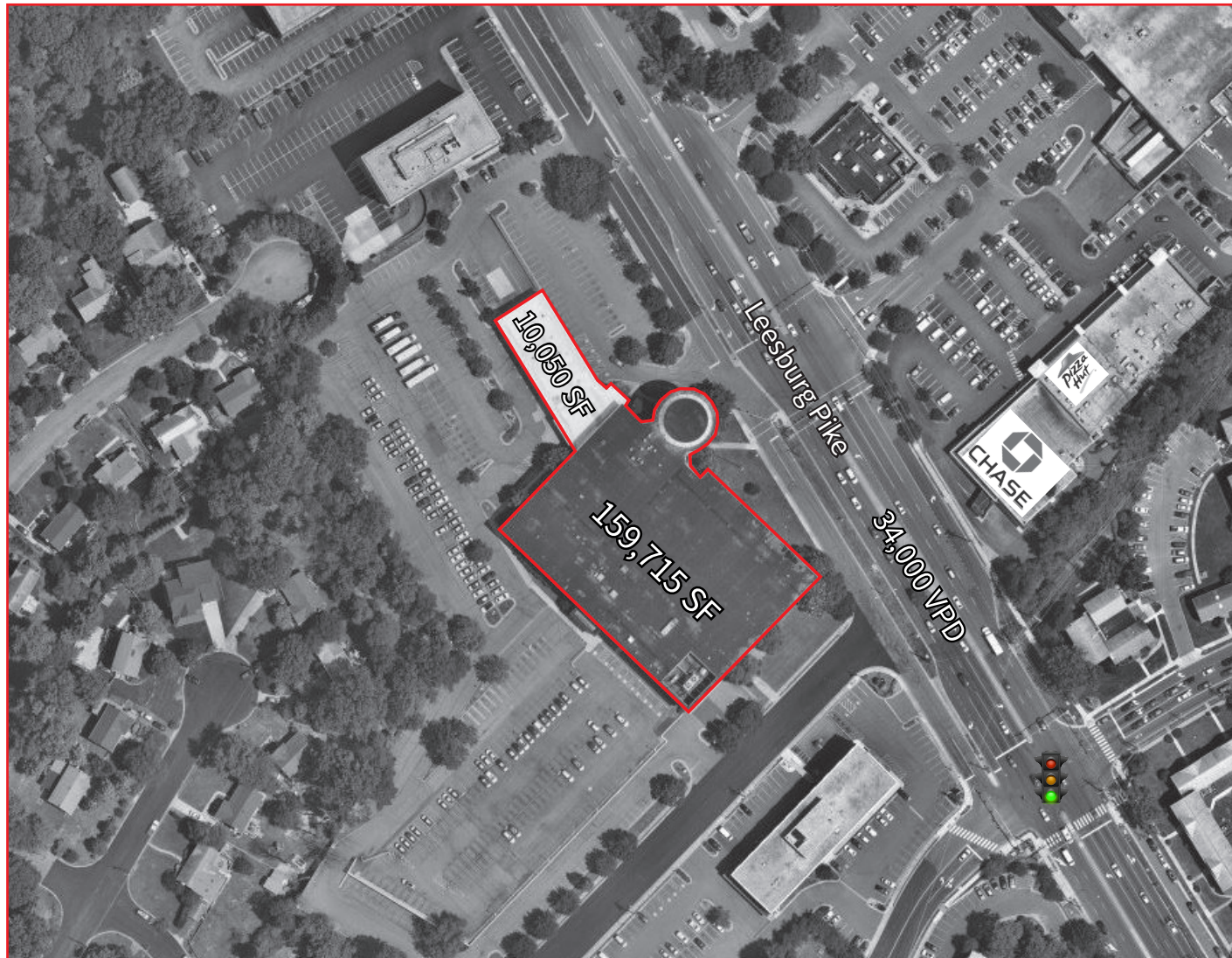
Area Retailers Map



Sears

6211 Leesburg Pike, Falls Church, VA 22044

Site Map



Jones Lang LaSalle Brokerage, Inc. | 2020 K Street NW, Suite 1100, Washington, DC 20006

**DISCLAIMER**

Although information has been obtained from sources deemed reliable, neither Owner nor JLL makes any guarantees, warranties or representations, express or implied, as to the completeness or accuracy as to the information contained herein. Any projections, opinions, assumptions or estimates used are for example only. There may be differences between projected and actual results, and those differences may be material. The Property may be withdrawn without notice. Neither Owner nor JLL accepts any liability for any loss or damage suffered by any party resulting from reliance on this information. If the recipient of this information has signed a confidentiality agreement regarding this matter, this information is subject to the terms of that agreement. ©2020 Jones Lang LaSalle IP, Inc. All rights reserved.

