

Pacific Arts Plaza

675 Anton Blvd, Suite #200

flex+[®]
BY IRVINE COMPANY



Furniture not included.

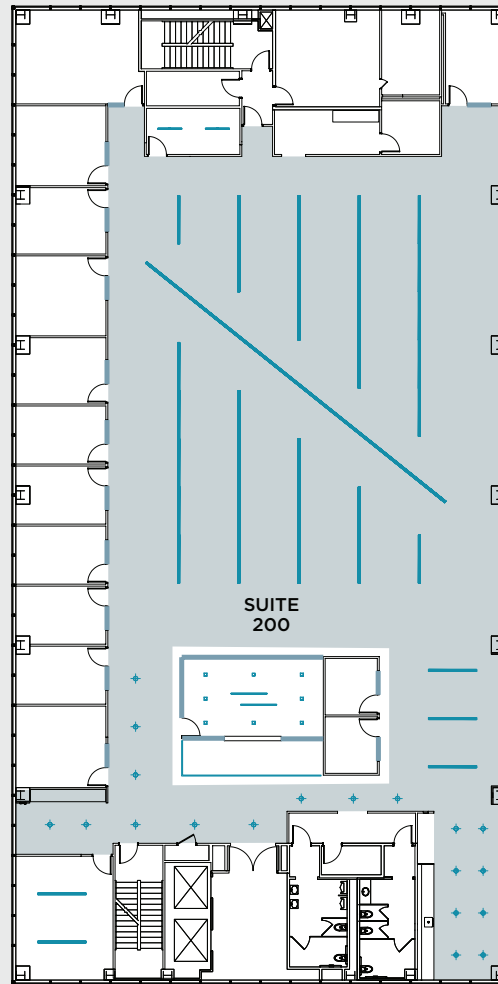
675 Anton Blvd Suite 200

Total Size
±13,164 sqft

Team Size
58-76

Private Offices
12

Meeting Rooms
4

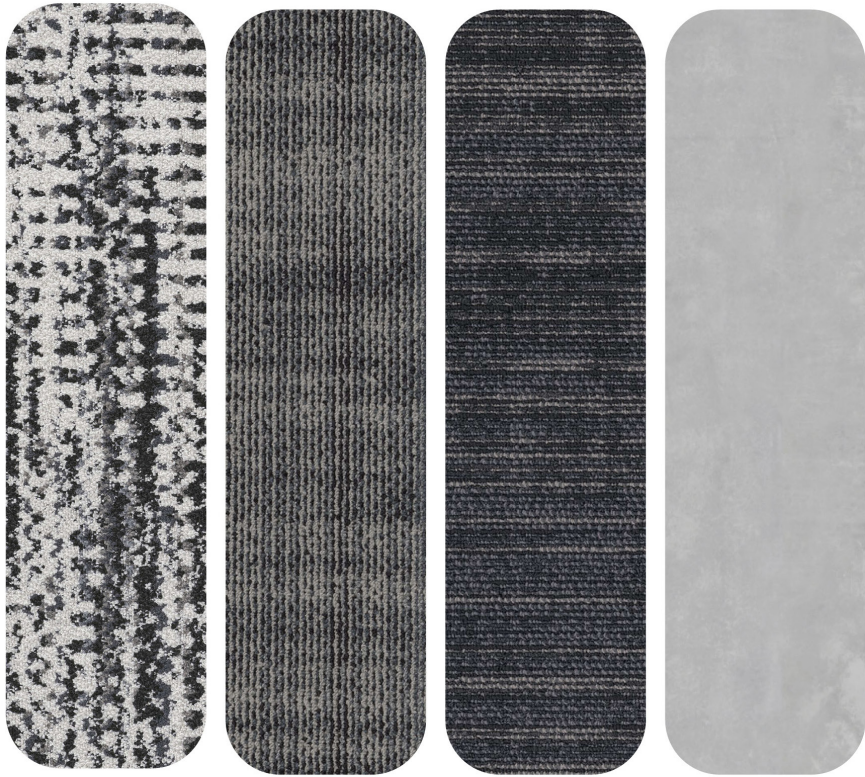


— Glass

■ Open Ceiling

⊕ Lights

finish palette | Suite 200



Flooring

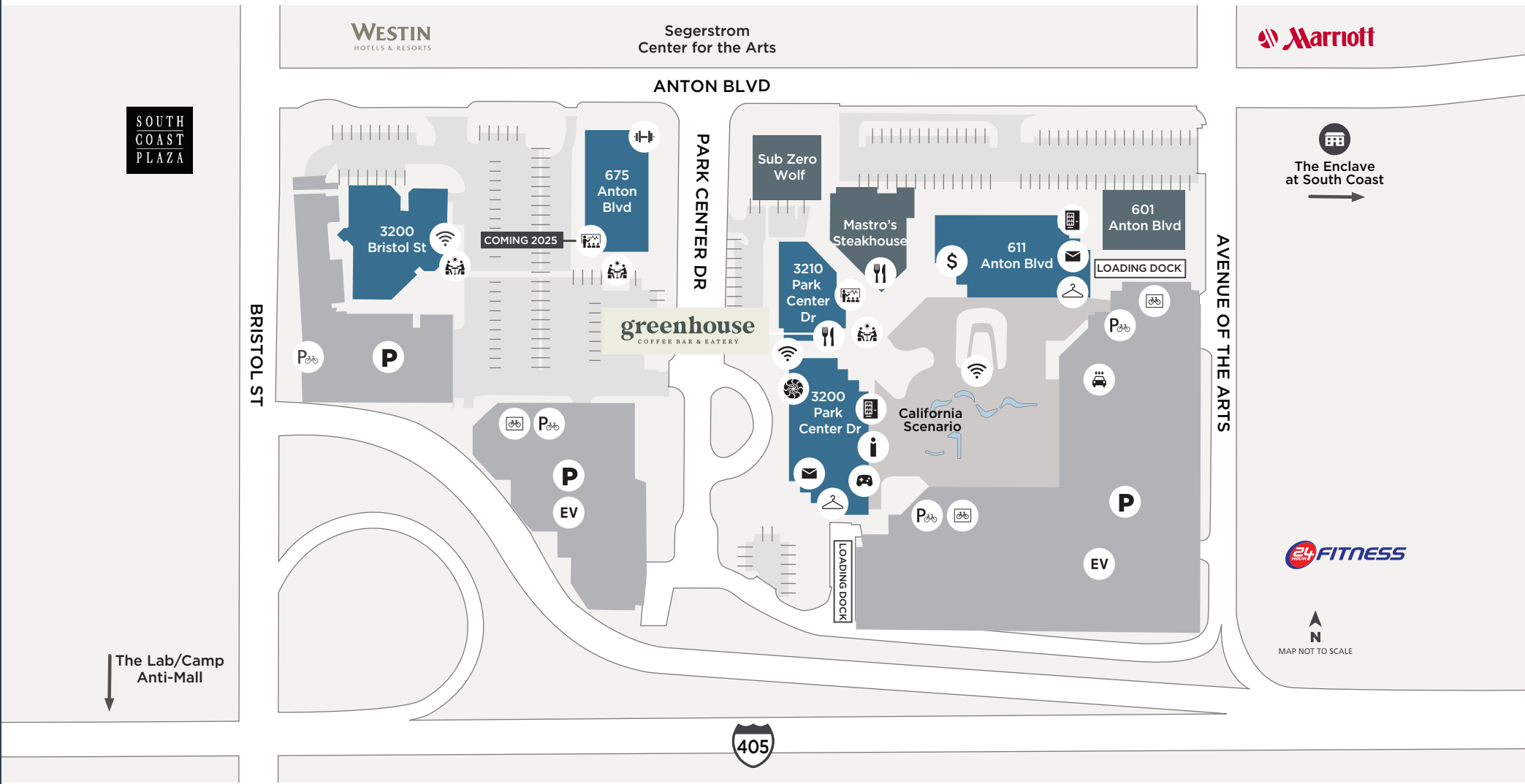


Break Room



Paint Scheme

Pacific Arts Plaza



- | | | | | | | | | |
|---|--|--|---|--|---|---|--|--|
| 
ACE PARKING OFFICE | 
APARTMENTS | 
ATM | 
AUTO DETAILING | 
BIKE LOCKERS | 
BIKE RACKS | 
CUSTOMER RESOURCE CENTER | 
DRY CLEANING | 
EV CHARGING |
| 
FITNESS CENTER | 
GAME LOUNGE | 
MAIL ROOM | 
OUTDOOR WORKSPACE (WIFI-ENABLED) | 
PARKING STRUCTURE | 
CAFE OR RESTAURANT | 
VENDING MACHINE | 
VENUE MEETINGS & EVENTS | |



Artist rendering subject to change. Furniture not included.

flexplus.com | 949.720.2550

All properties for lease by Irvine Management Company, a licensed real estate broker, DRE LIC. #02041810. Product and amenities are subject to availability. Images may not be to scale. Not all features available in all communities. Not a representation or warranty. Flex+ is a registered trademark of Irvine Management Company. ©2025 Irvine Management Company. All Rights Reserved. The Sunwave, Irvine Company, and Success Works Here are registered trademarks of Irvine Management Company.