

BOSTON CHILDREN'S MUSEUM 308 CONGRESS STREET



TOUR 6TH FLOOR

- ▶ 10,597 SF Space
- ▶ 3,900 SF Space



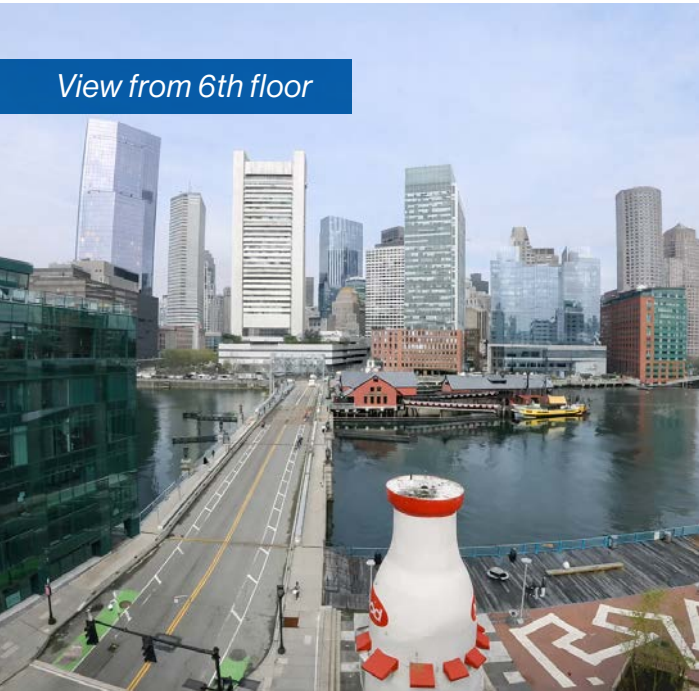
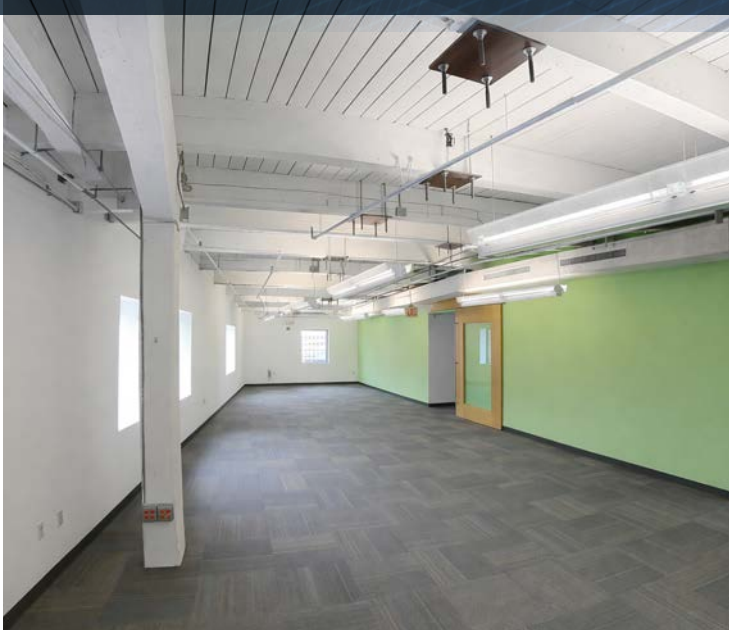
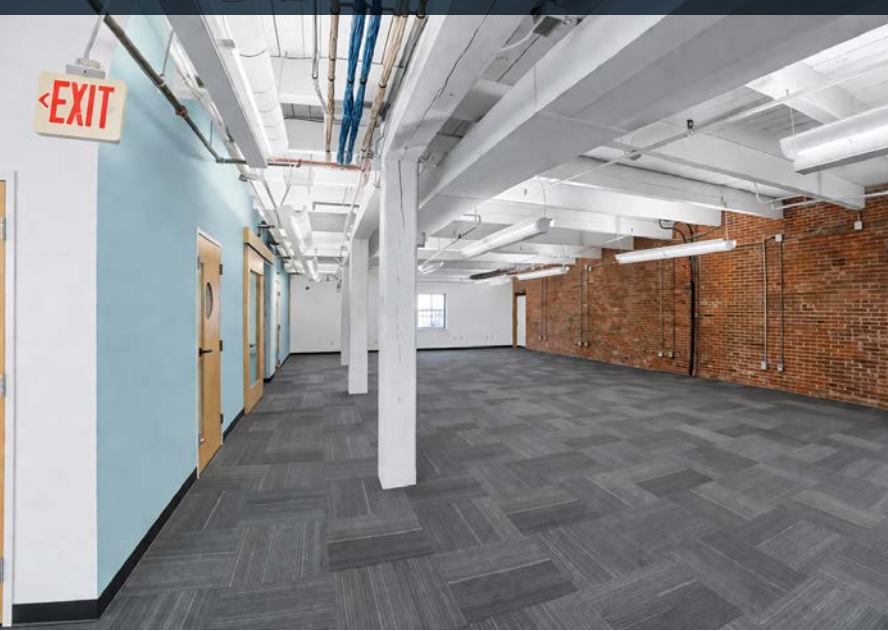
AVAILABLE SPACE: 6TH FLOOR (SUBDIVIDABLE)
2,400 RSF - 14,497 RSF

HIGHLIGHTS

- Brick & beam office space with character and charm
- Spectacular views of Boston Harbor and Fort Point Channel
- On-site conference facility
- 24/7 lobby attendant
- Amenities on-site and within walking distance
- Short walk to South Station (MBTA Red Line, Commuter Rail, Amtrak)
- Unique opportunity to associate with the iconic Boston Children's Museum

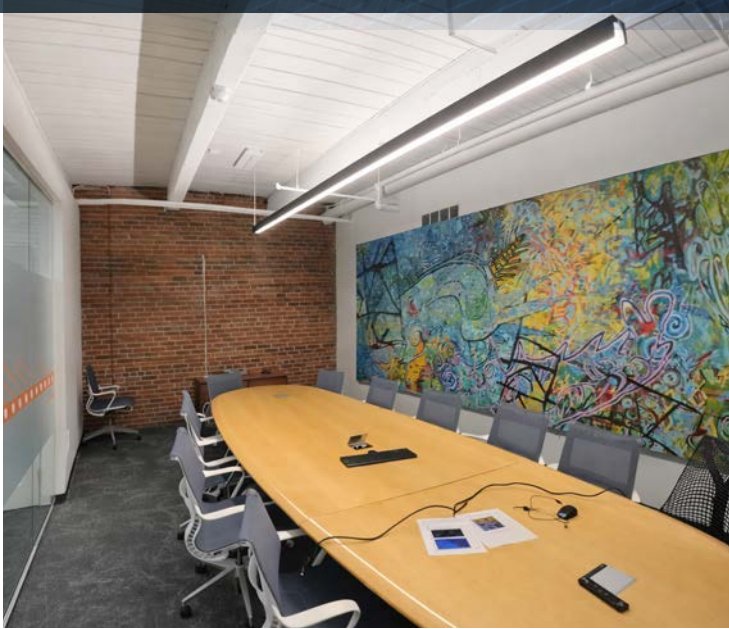
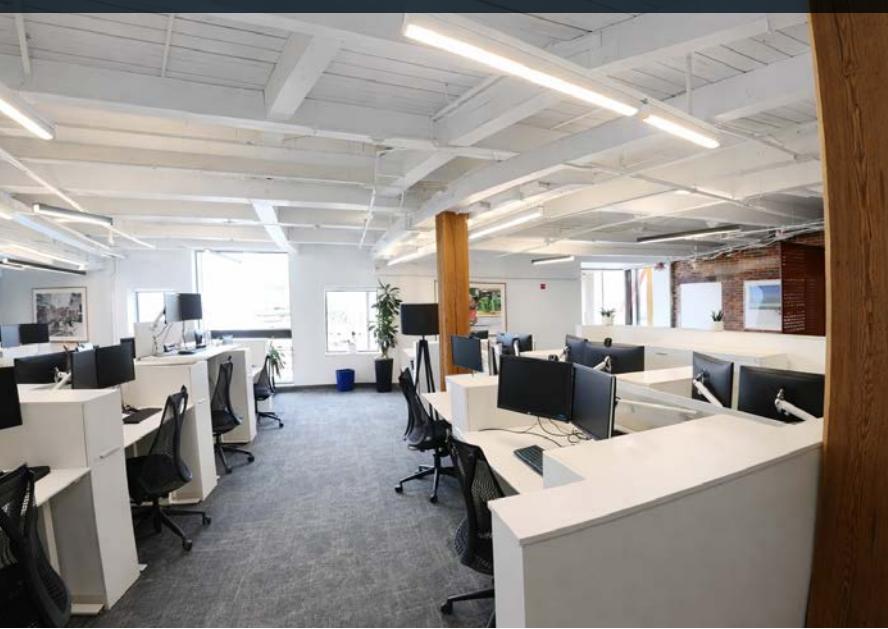
308 CONGRESS STREET

INTERIOR PHOTOS- 6TH FLOOR (10,597 RSF)



308 CONGRESS STREET

INTERIOR PHOTOS - 6TH FLOOR (3,900 RSF)



View from 6th floor



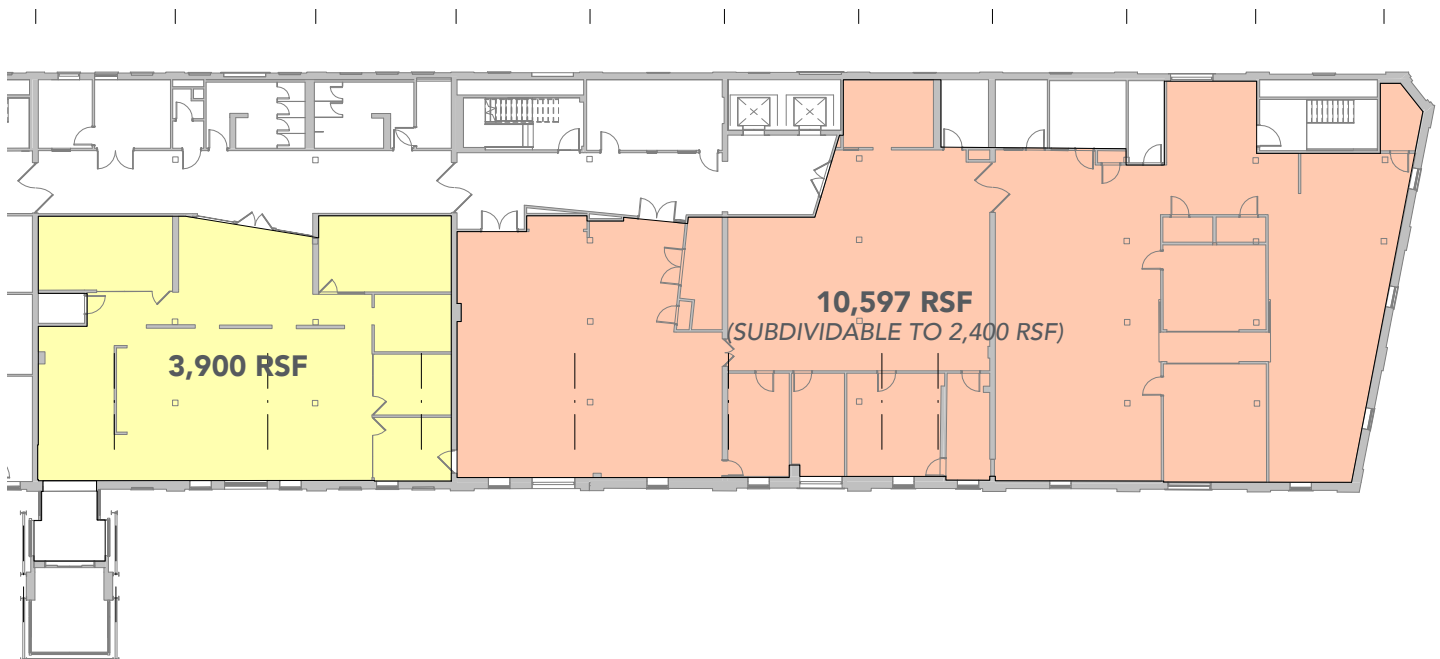
308 CONGRESS STREET

FLOOR PLANS



6TH FLOOR

2,400 RSF - 14,497 RSF



Contact:

Christopher Rogers
EVP, Principal
617.974.6363
crogers@fpcre.com

Ellie Fantini Cullinan
EVP, Principal
617.835.3323
ecullinan@fpcre.com

Christiaan Bosse
Associate
617.721.1342
cbosse@fpcre.com

▶ VISIT PROPERTY WEBSITE

www.fpcre.com

265 Franklin Street, 16th Floor, Boston 02110

The information contained herein has been obtained through sources deemed reliable by Freudenheim Partners, but cannot be guaranteed for its accuracy. Any interested party should undertake their own inquiries as to the accuracy of the information. This publication is the copyrighted property of Freudenheim Partners and/or its licensor(s). © 2026. All rights reserved.