

Miracle Mile Office for Shared Sublease or Entire Floor Opportunity

6420 Wilshire Blvd
Los Angeles, CA 90048
17th Floor



Premises	± 150 - 10,532 RSF
Rental Rate	Negotiable
Term	Flexible

- » Immediate Occupancy
- » Perfect for Attorney, CPA & any other Professional
- » Stellar Views from the beach to the Hollywood Hills
- » Recently Renovated Building
- » Motor Court Entry with Valet Staffing
- » Garden Plaza with Seating
- » Dual Access from Wilshire Bl & San Vicente Bl

[Click to Watch Virtual Tour](#)

Option A - Shared Sublease

- 4 Available Window Offices
- 2 Shared Conference Rooms
- Shared Kitchen with Sink & Dishwasher

Option B - Sublease Entire Floor

- 5 Executive Window Offices
- 10 Standard Window Offices
- 3 Interior Offices
- 2 Conference Rooms
- 5 Bullpen Stalls
- Kitchen with Sink & Dishwasher
- Storage Room
- Printer/Copy Room

Ron Kaspi
310.202.9008 x127
ron@wilshireag.com
DRE# 01986929

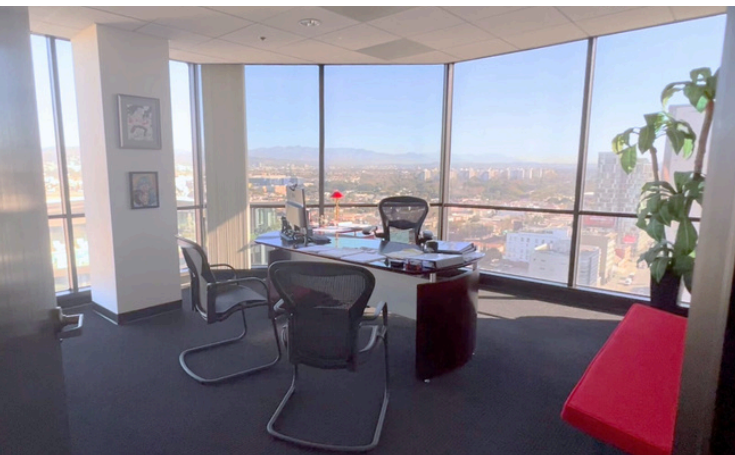


Kevin Taylor
310.202.9008 x133
kevin@wilshireag.com
DRE# 02237940

The information furnished regarding rent roll, income, expenses, layouts, measurements and similar data has been submitted to us by others and thus we cannot make any representation as to its accuracy. The information furnished regarding property for sale, rental or financing is submitted subject to errors, omissions, change of price or other conditions, prior sale lease, or withdrawal without notice.

Miracle Mile Office for Shared Sublease or Entire Floor Opportunity

6420 Wilshire Blvd
Los Angeles, CA 90048
17th Floor



Ron Kaspi
310.202.9008 x127
ron@wilshireag.com
DRE# 01986929

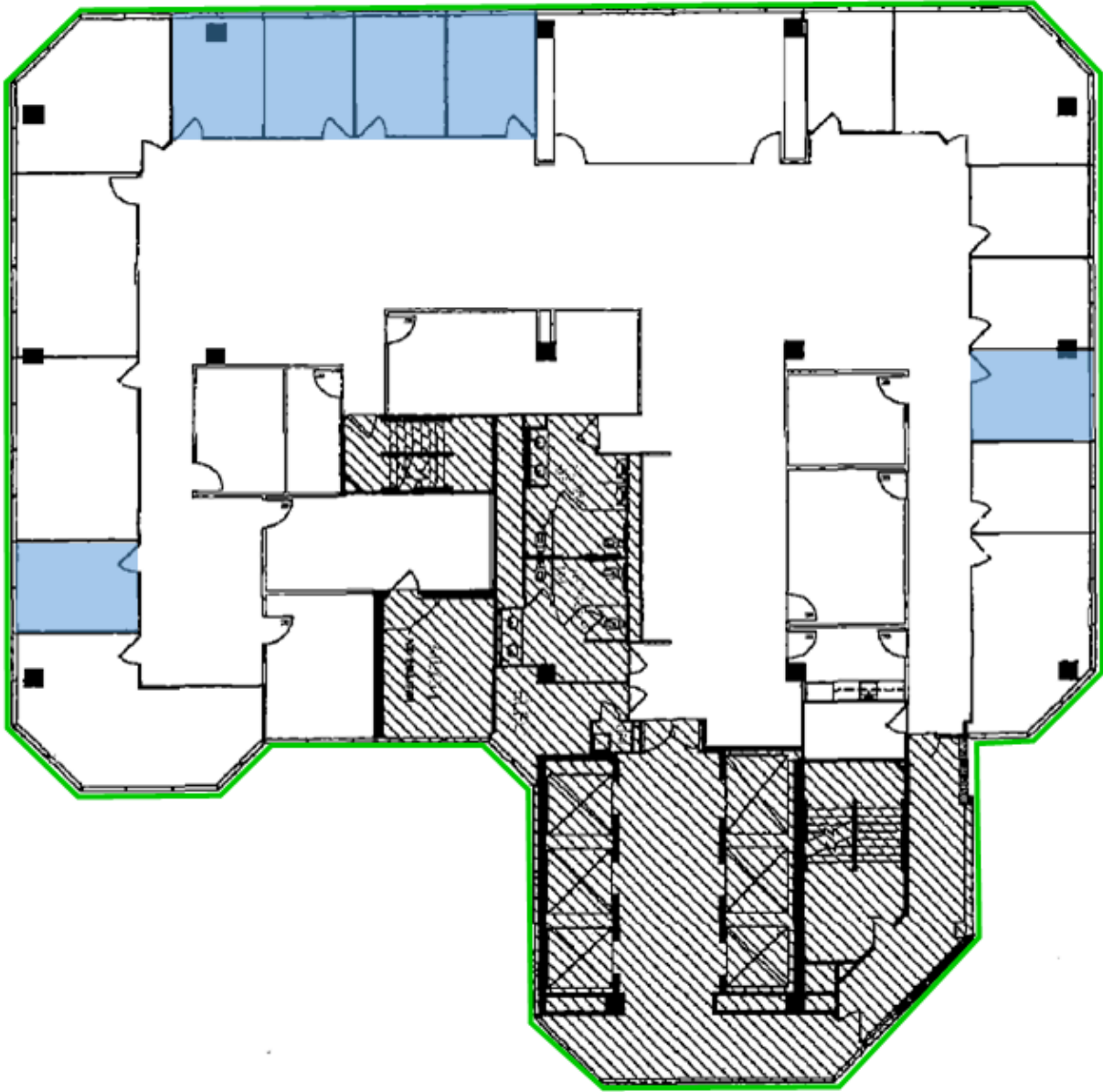


Kevin Taylor
310.202.9008 x133
kevin@wilshireag.com
DRE# 02237940

The information furnished regarding rent roll, income, expenses, layouts, measurements and similar data has been submitted to us by others and thus we cannot make any representation as to its accuracy. The information furnished regarding property for sale, rental or financing is submitted subject to errors, omissions, change of price or other conditions, prior sale lease, or withdrawal without notice.

Option A : Available Shared Office

Option B: Available Full Floor



[Click to Watch Virtual Tour](#)

Ron Kaspi
310.202.9008 x127
ron@wilshireag.com
DRE# 01986929



Kevin Taylor
310.202.9008 x133
kevin@wilshireag.com
DRE# 02237940

The information furnished regarding rent roll, income, expenses, layouts, measurements and similar data has been submitted to us by others and thus we cannot make any representation as to its accuracy. The information furnished regarding property for sale, rental or financing is submitted subject to errors, omissions, change of price or other conditions, prior sale lease, or withdrawal without notice.