

98-60 QUEENS BLVD

Rego Park • QUEENS





98-60 REGO PARK

THE RETAIL OPPORTUNITY

COMMENTS

- Base of brand new luxury condo tower
- Over 70,000 SF of total commercial space
- Over 120 car parking garage on site
- Prime Rego Park location facing Queens Blvd
- Seeking Supermarket, Retail, Medical, Office, School and all other uses considered

VEHICLES PER DAY

- Roughly 50,000 vehicles pass per day

NEIGHBORING TENANTS

- Costco, Marshall's, Burlington Coat Factory, Aldi, Best Buy, At Home, TJ Maxx and Starbucks


SIZE

- First Floor - 10,000 SF
- Lower Level - 10,000 SF
- Third Floor - 10,000 SF
- Fourth Floor - 10,000 SF

CEILING HEIGHTS

- 12FT-20FT

TRANSPORTATION

- Near major transportation hubs and thru-ways
- One block away from the 63rd Avenue & 67th Avenue Subway Lines of the 
- Queens Blvd leads to the Midtown Tunnel, The Long Island Expressway & Grand Central Parkway

1-MILE

AREA DEMOGRAPHICS



136K

TOTAL DAYTIME POPULATION

\$78K

MEDIAN HOUSEHOLD INCOME



\$1.5B

TOTAL RETAIL GOODS EXPENDITURE

61K

TOTAL HOUSEHOLDS

150K

TOTAL POPULATION

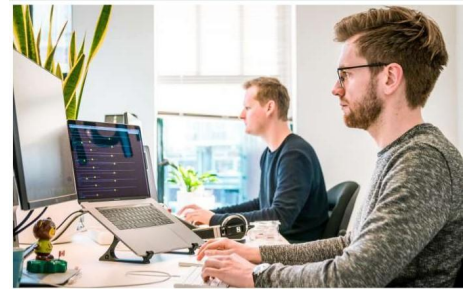


7.7%

POPULATION UNDER THE AGE OF 44

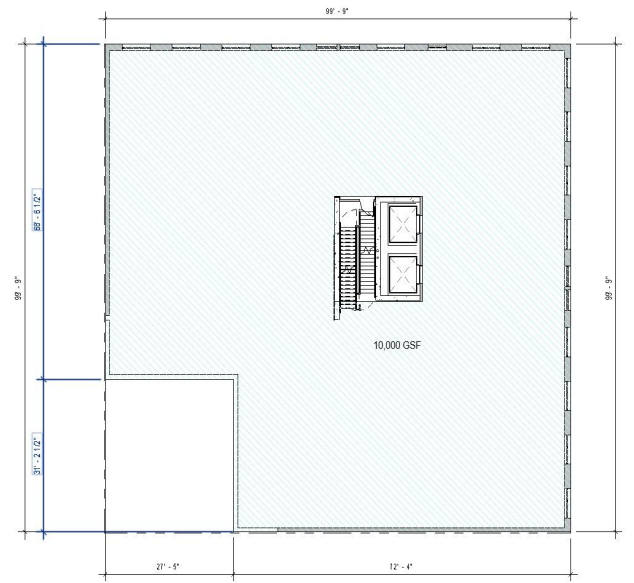
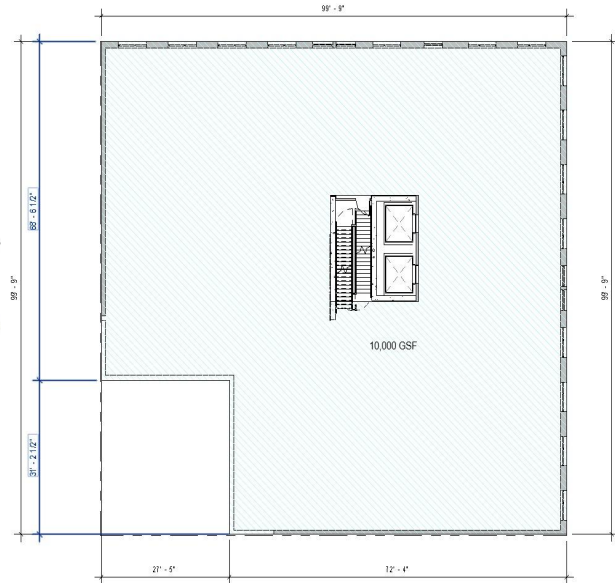
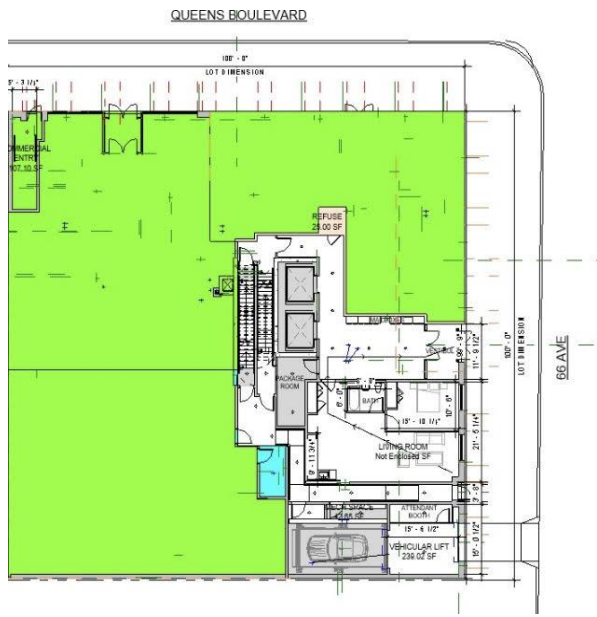
76.9%

WHITE COLLAR WORKERS

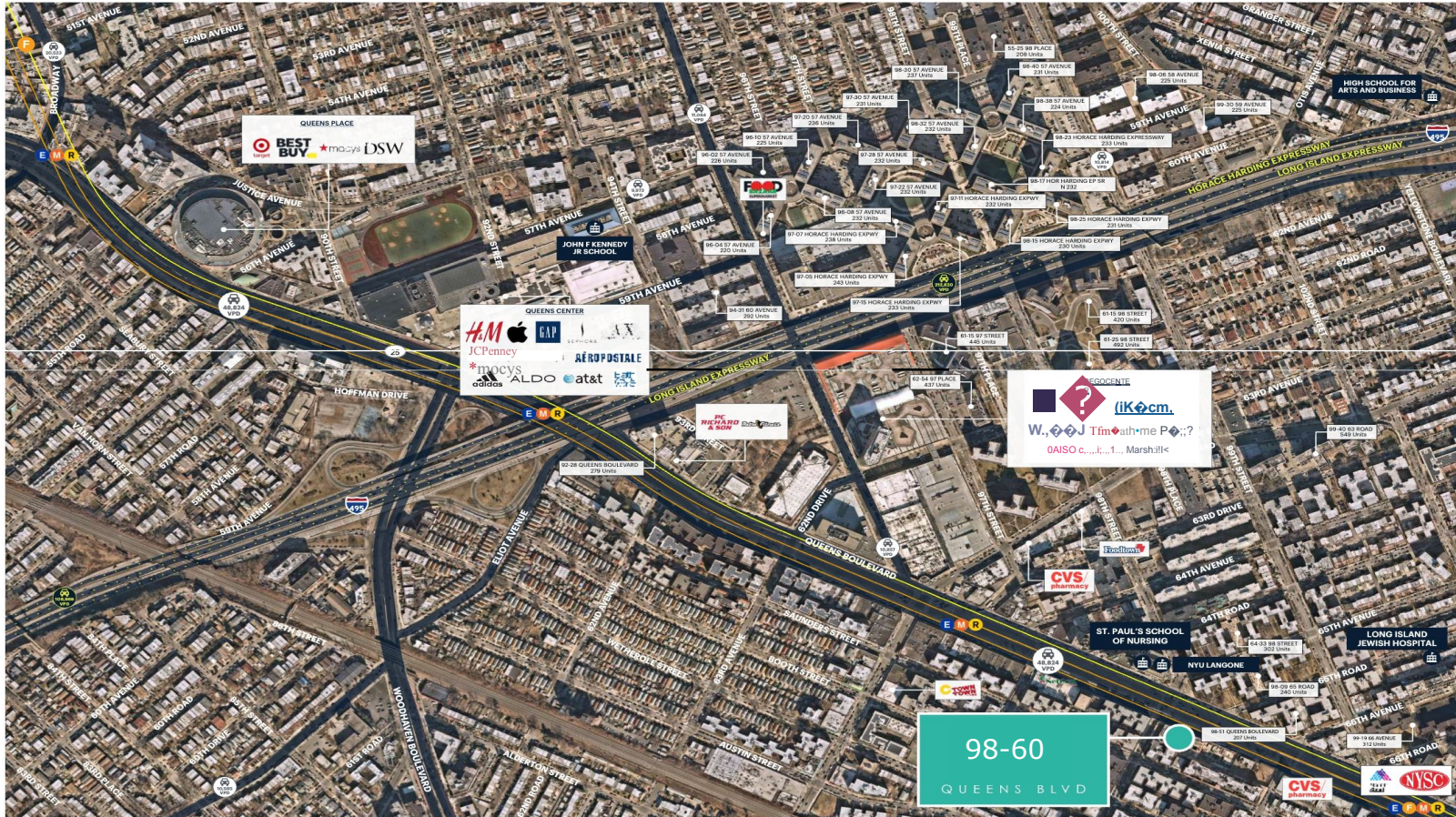


98-60 Queens Blvd Floor Plans

- Lower Level 10,000 Gross Square Feet
- Ground floor 8,000 Gross Square Feet
- Second Floor 10,000 Gross Square Feet
- Third Floor 10,000 Gross Square Feet
- Fifth Floor 10,000 Gross Square Feet
- Sixth Floor 10,000 Gross Square Feet
- Seventh Floor 10,000 Gross Square Feet



MARKET SNAPSHOT



98-60

QUEENS BLVD

Rego Park QUEENS

FOR MORE INFORMATION,
PLEASE CONTACT:

NATHAN MATATOV

646.877.7388 | Nathan@qblvdh.com

DAVID MATATOV

917.723.3589 | David@qblvdh.com

AVI MATATOV

917.991.1514 | Avi@qblvdh.com