

The Colliers logo consists of the word "Colliers" in white serif font on a blue rectangular background with a yellow and red horizontal stripe at the bottom.

**COLDWELL BANKER
COMMERCIAL**
BROKERS
OF THE VALLEY

Available For Lease

Rare Refrigerated Warehouse

902 Enterprise Way, Suites M & N | Napa, CA

Highlights

- ±7,488 SF within a ±40,380 SF Multi-Tenant Building
- \$1.50/SF/Mo. NNN \$0.47/Mo. (Est)
- Zoned: Industrial Light (IL)

Office Area Features

- Reception Area
- Conference Room
- 3 Private Offices
- Area for Cubicles
- Break Room
- Restroom

Warehouse Area Features

- Floor Drains (Subject to NSD Rules/Regs)
- 3 Roll-Ups, 1 Insulated (12'x14')
- ±17' Clear Height
- Restroom
- Refrigerated Warehouse
- Lab Station

Contact Brokers

Bret DeMartini

Executive Vice President
CA License No. 00853110
bret.demartini@colliers.com
+1 707 863 8397

Michael Moffett

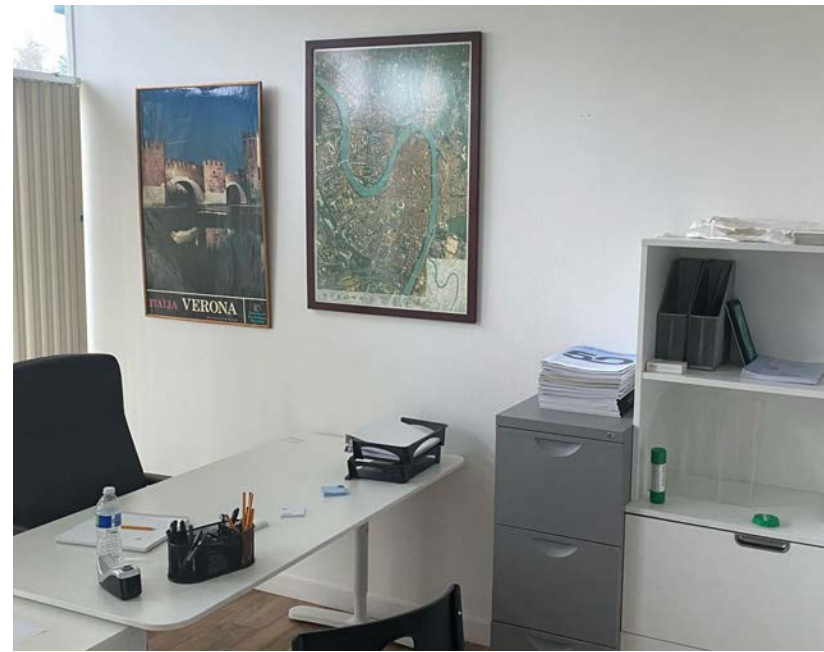
Coldwell Banker Commercial Brokers of the Valley
CA License No. 00946472
mmoffett@cnapavalley.com
+1 707 479 1976

Colliers

1850 Mt Diablo Blvd, Suite 200
Walnut Creek, CA 94596
colliers.com

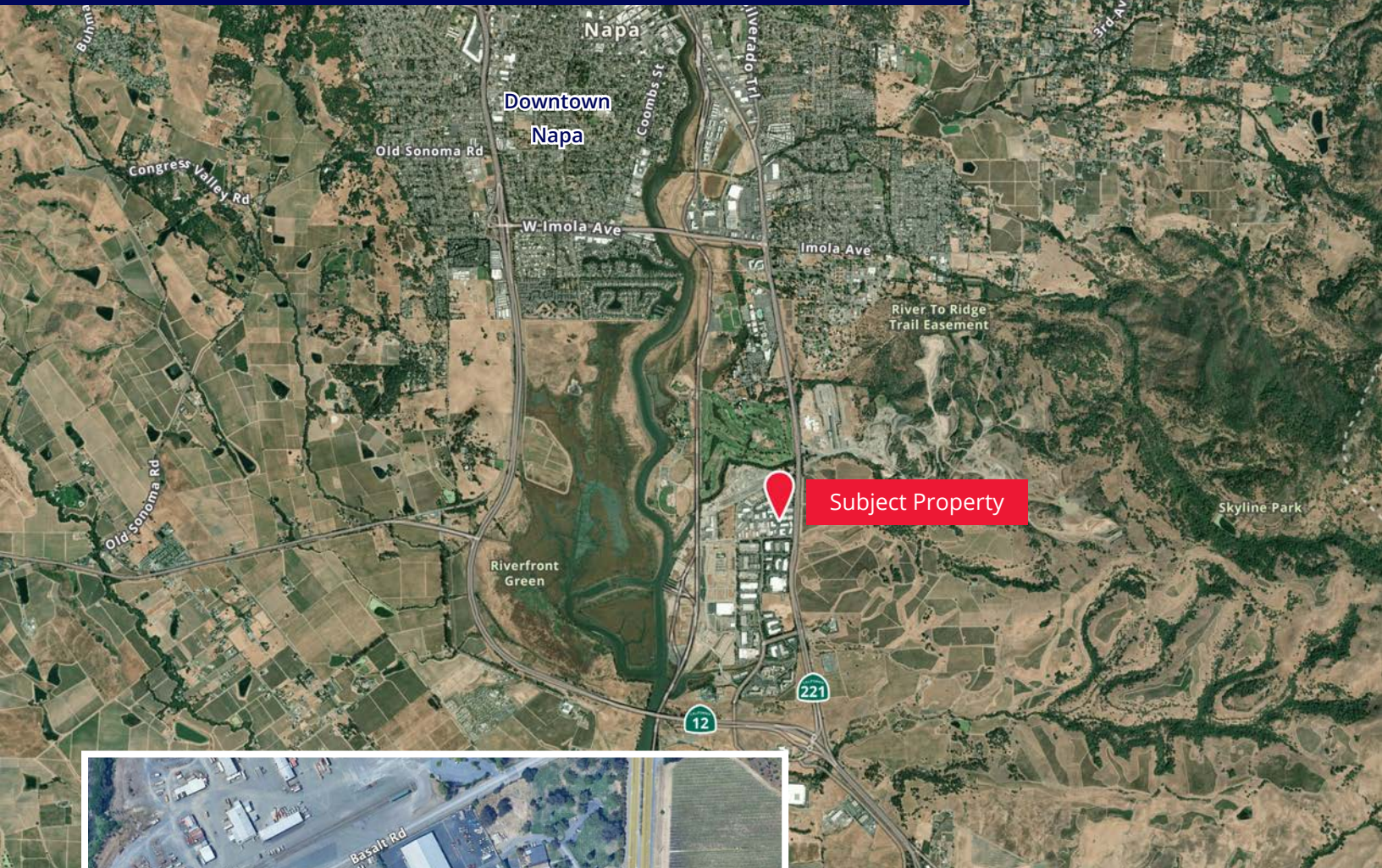
902 Enterprise Way, Suites M & N | Napa, CA

Photo Gallery



902 Enterprise Way, Suites M & N | Napa, CA

Location Overview



Contact Brokers

Bret DeMartini

Executive Vice President
CA License No. 00853110
bret.demartini@colliers.com
+1 707 863 8397

Michael Moffett

Coldwell Banker Commercial Brokers of the Valley
CA License No. 00946472
mmoffett@cbnapavalley.com
+1 707 479 1976

Colliers

1850 Mt Diablo Blvd, Suite 200
Walnut Creek, CA 94596
colliers.com