



±45,659 SF Available For Lease

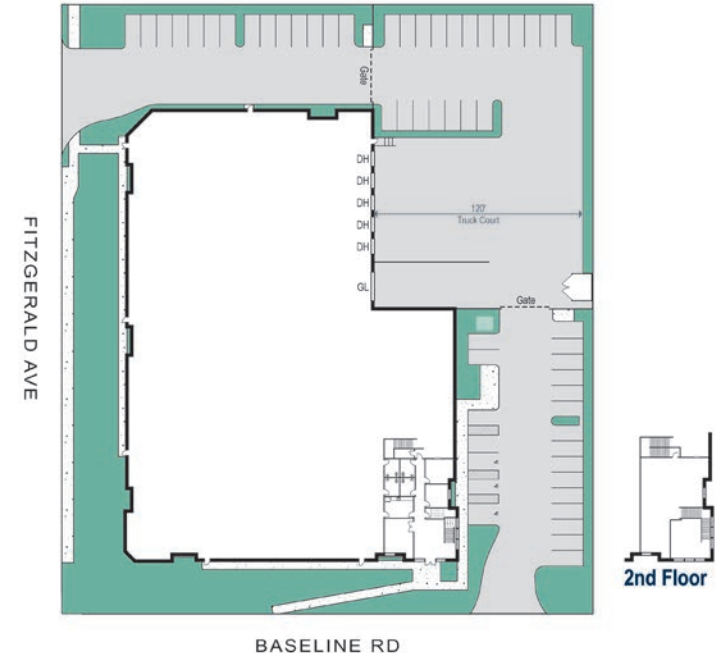
1110 W. BASELINE ROAD, RIALTO, CA 92376

Juan Gutierrez, SIOR
Executive Vice President, Partner
909.545.8008
jgutierrez@voitco.com
Lic. #01777990

Shy Assar, MBA/MRED
Senior Vice President, Partner
909.545.8091
sassar@voitco.com
Lic. #01964667

Ian Ozimec, CCIM
Senior Associate
909.545.8001
iozimec@voitco.com
Lic. #02040261

Voit
REAL ESTATE SERVICES



±45,659 SF

- ±2,000 square foot office
- ±1,500 square foot mezzanine
- 30' clear height
- 5 dock high doors
- 2 - 35,000 lb load levelers
- 3 - edge of dock levelers
- 1 ground level doors
- FSK scrim foil under roof
- 6" thick building floor slab
- Gated truck court
- 120' all concrete truck court
- LED warehouse lighting (average 20' candles)
- 3% skylights
- ESFR sprinkler system
- 1,200 amps 270/480v 3 phase power (verify)
- 52' x 60' typical bay spacing
- 53 auto parking stalls

PROPERTY FEATURES

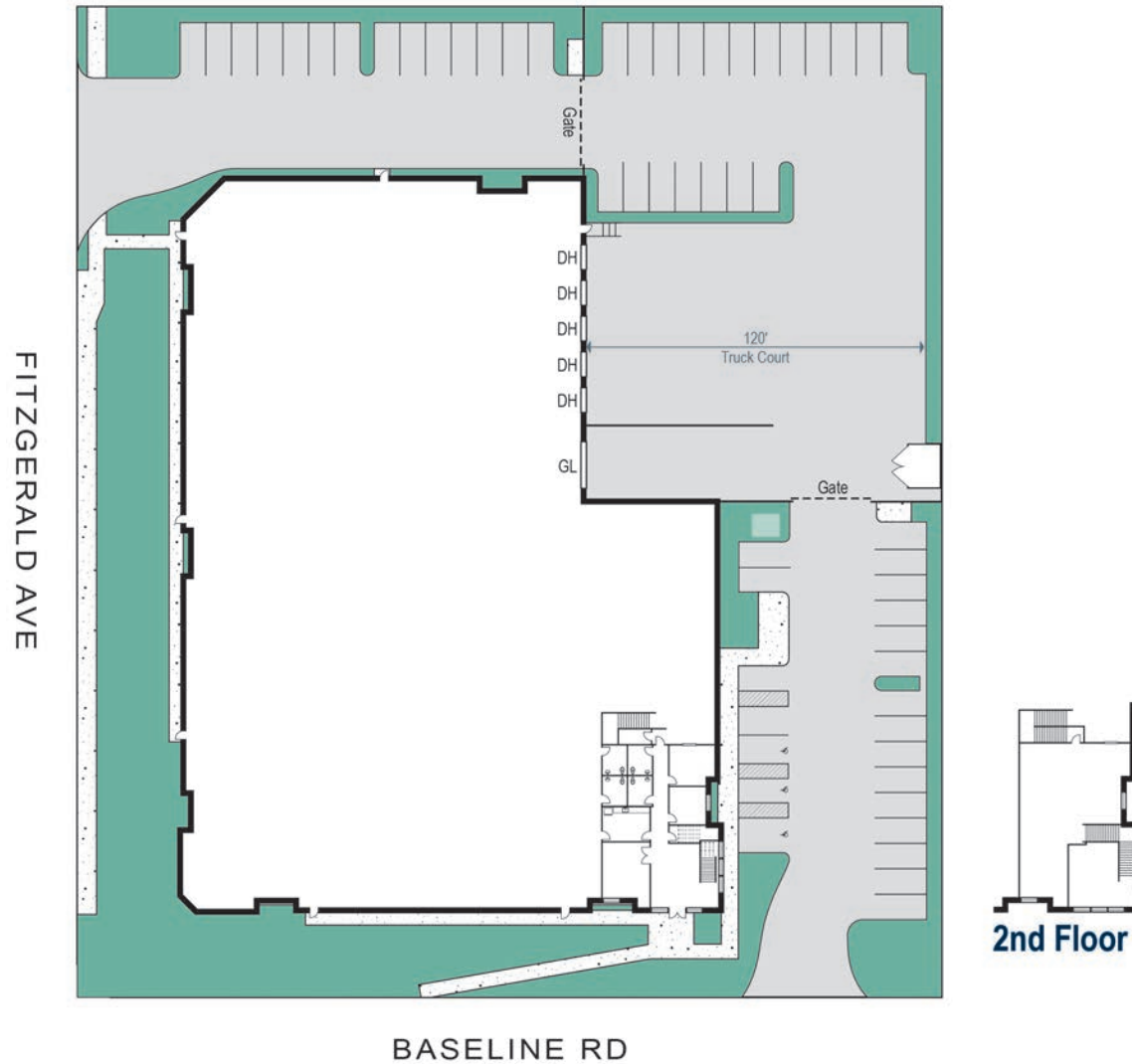
1110 W. BASELINE ROAD, RIALTO, CA 92376

Juan Gutierrez, SIOR
Executive Vice President, Partner
909.545.8008
jgutierrez@voitco.com
Lic. #01777990

Shy Assar, MBA/MRED
Senior Vice President, Partner
909.545.8091
sassar@voitco.com
Lic. #01964667

Ian Ozimec, CCIM
Senior Associate
909.545.8001
iozimec@voitco.com
Lic. #02040261

Voit
REAL ESTATE SERVICES



SITE PLAN

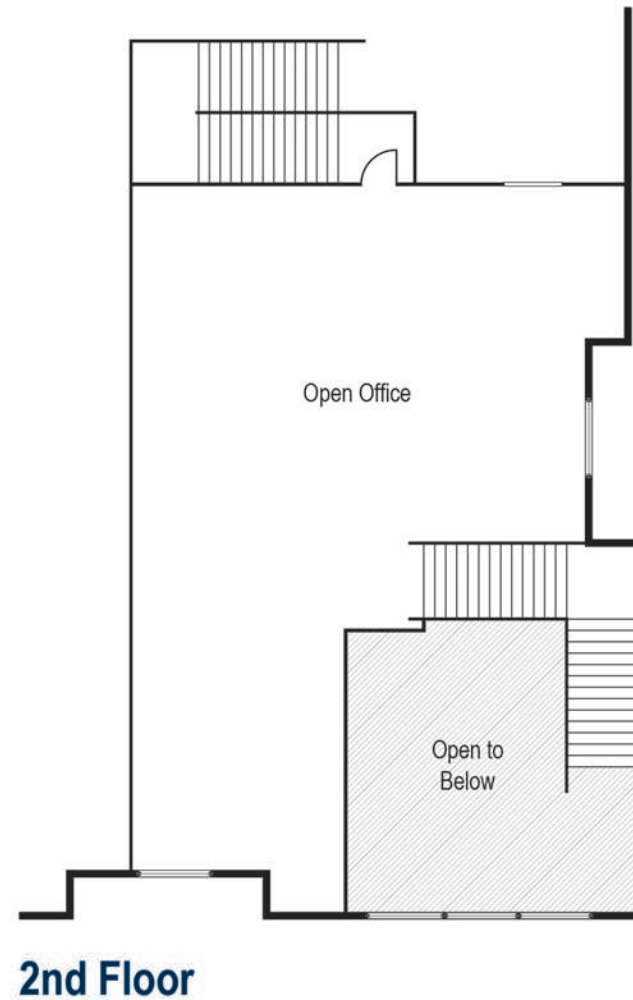
1110 W. BASELINE ROAD, RIALTO, CA 92376

Juan Gutierrez, SIOR
 Executive Vice President, Partner
 909.545.8008
 jgutierrez@voitco.com
 Lic. #01777990

Shy Assar, MBA/MRED
 Senior Vice President, Partner
 909.545.8091
 sassar@voitco.com
 Lic. #01964667

Ian Ozimec, CCIM
 Senior Associate
 909.545.8001
 iozimec@voitco.com
 Lic. #02040261

Voit
 REAL ESTATE SERVICES



OFFICE PLAN

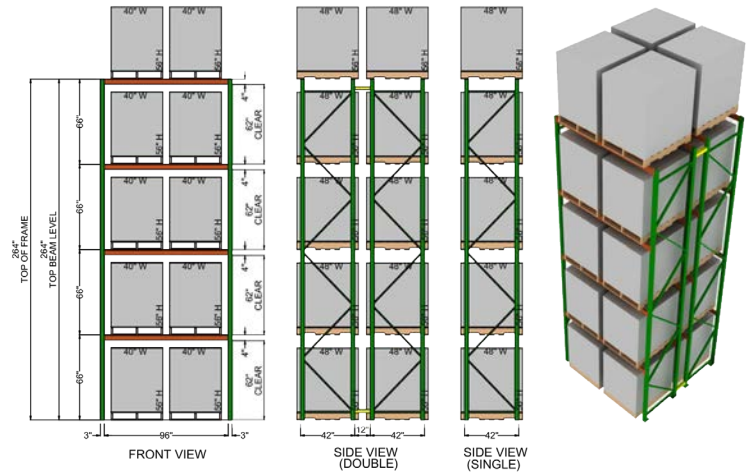
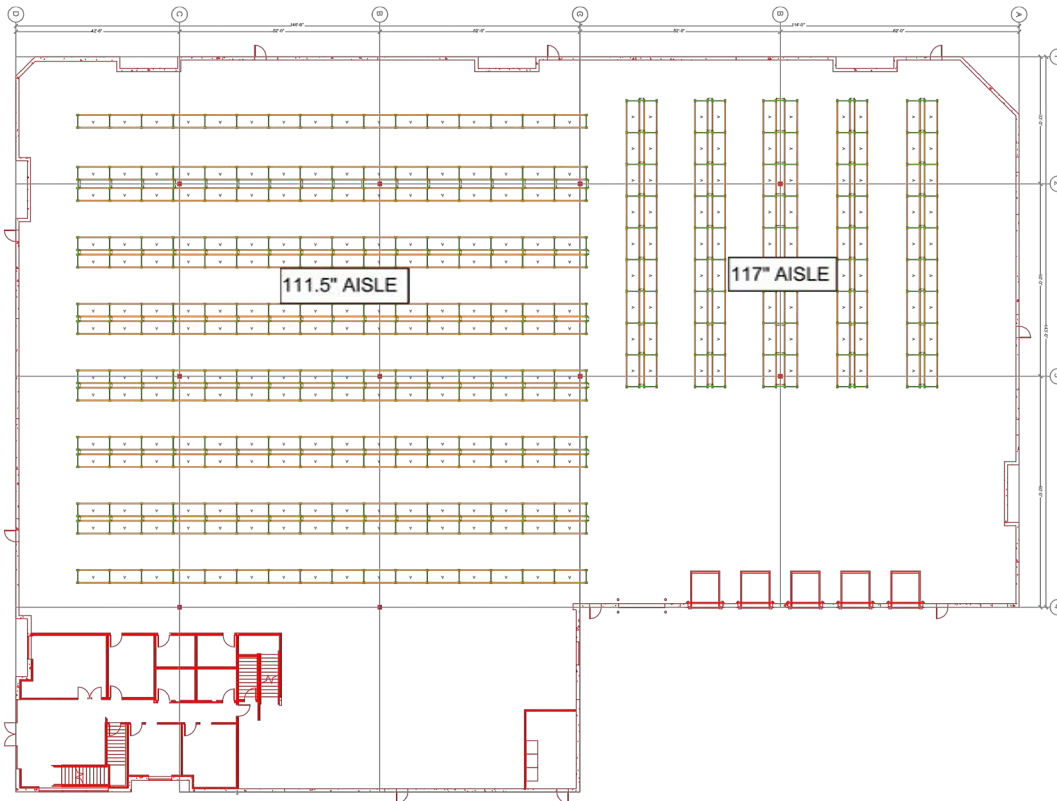
1110 W. BASELINE ROAD, RIALTO, CA 92376

Juan Gutierrez, SIOR
 Executive Vice President, Partner
 909.545.8008
 jgutierrez@voitco.com
 Lic. #01777990

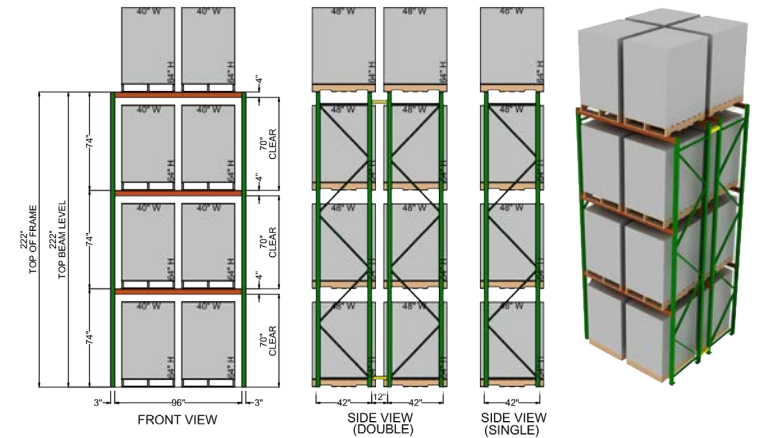
Shy Assar, MBA/MRED
 Senior Vice President, Partner
 909.545.8091
 sassar@voitco.com
 Lic. #01964667

Ian Ozimec, CCIM
 Senior Associate
 909.545.8001
 iozimec@voitco.com
 Lic. #02040261

Voit
 REAL ESTATE SERVICES



Total 56" Pallet Positions 3,140



Total 64" Pallet Positions 2,512

RACKING PLAN

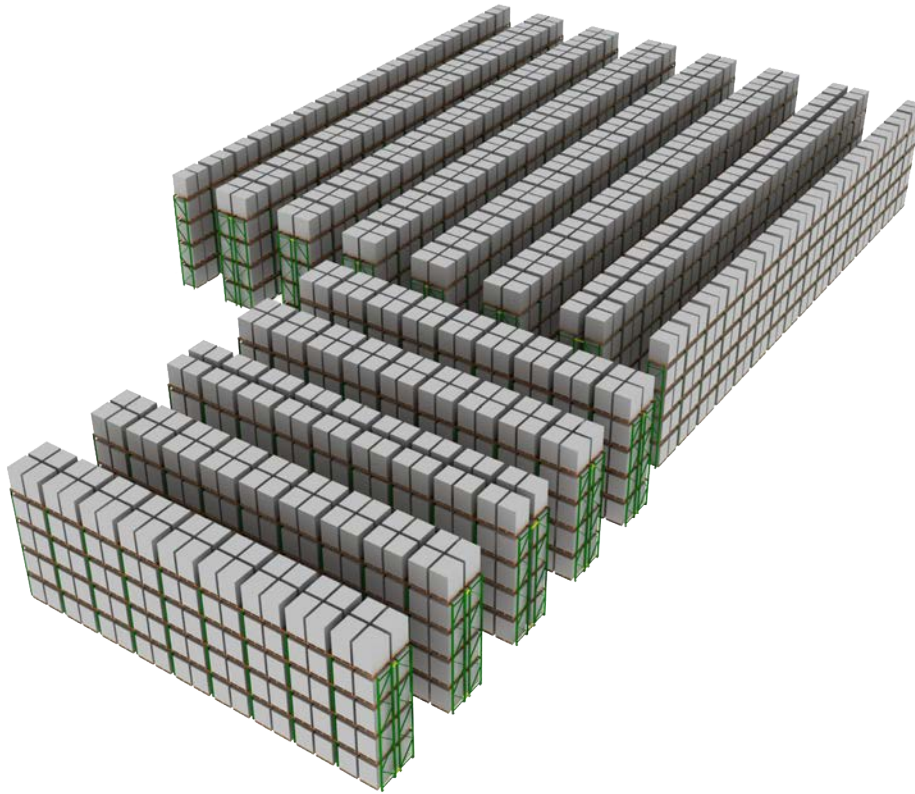
1110 W. BASELINE ROAD, RIALTO, CA 92376

Juan Gutierrez, SIOR
Executive Vice President, Partner
909.545.8008
jgutierrez@voitco.com
Lic. #01777990

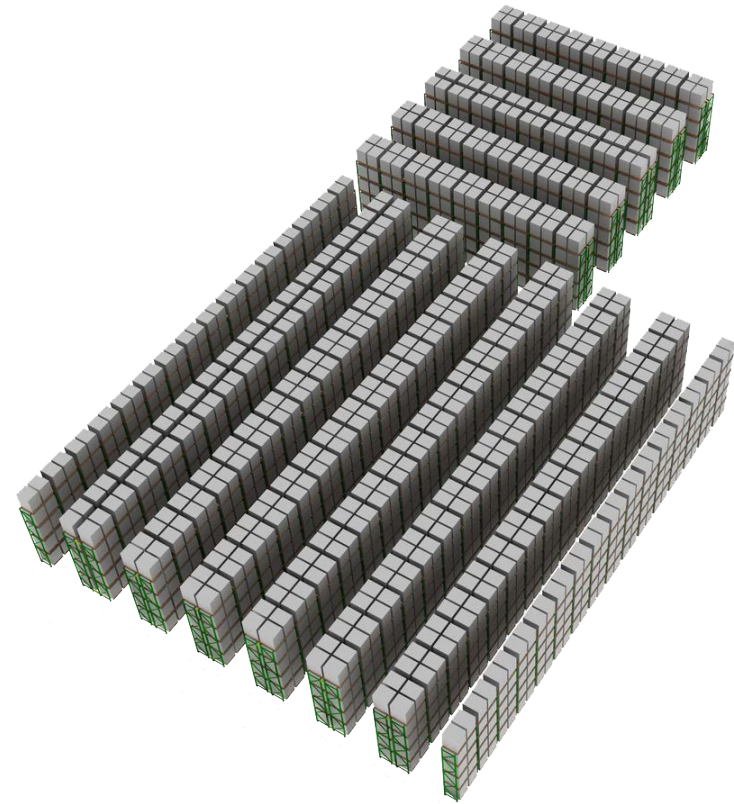
Shy Assar, MBA/MRED
Senior Vice President, Partner
909.545.8091
sassar@voitco.com
Lic. #01964667

Ian Ozimec, CCIM
Senior Associate
909.545.8001
iozimec@voitco.com
Lic. #02040261





Option 1



Option 2

CONCEPTUAL RACKING FLOOR PLAN

RAYMOND WEST
INTRALOGISTICS SOLUTIONS

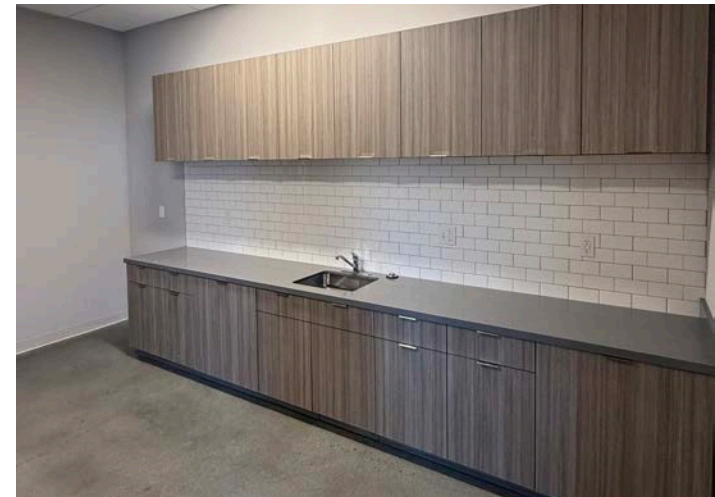
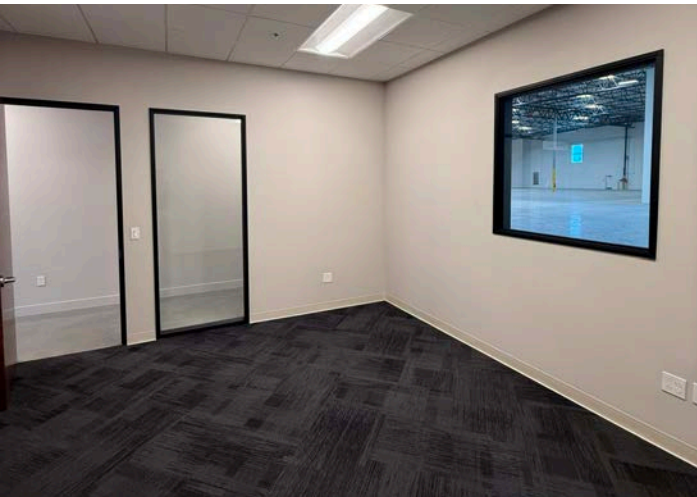
1110 W. BASELINE ROAD, RIALTO, CA 92376

Juan Gutierrez, SIOR
Executive Vice President, Partner
909.545.8008
jgutierrez@voitco.com
Lic. #01777990

Shy Assar, MBA/MRED
Senior Vice President, Partner
909.545.8091
sassar@voitco.com
Lic. #01964667

Ian Ozimec, CCIM
Senior Associate
909.545.8001
iozimec@voitco.com
Lic. #02040261

Voit
REAL ESTATE SERVICES



OFFICE PHOTOS

1110 W. BASELINE ROAD, RIALTO, CA 92376

Juan Gutierrez, SIOR
Executive Vice President, Partner
909.545.8008
jgutierrez@voitco.com
Lic. #01777990

Shy Assar, MBA/MRED
Senior Vice President, Partner
909.545.8091
sassar@voitco.com
Lic. #01964667

Ian Ozimec, CCIM
Senior Associate
909.545.8001
iozimec@voitco.com
Lic. #02040261

Voit
REAL ESTATE SERVICES



Centrally located in one of the premier distribution markets in the country.

Corporate Neighbors include Amazon, Target, Kellogg's, Monster Energy and Medline.

Notable Distances



16 Miles
ONT

55 Miles
SNA

71 Miles
LAX



6 Miles
215

1 Miles
210

4 Miles
10

7 Miles
15

9 Miles
60



83 Miles PORTS OF LOS ANGELES / LONG BEACH



LOCATION

1110 W. BASELINE ROAD, RIALTO, CA 92376

Juan Gutierrez, SIOR
Executive Vice President, Partner
909.545.8008
jgutierrez@voitco.com
Lic. #01777990

Shy Assar, MBA/MRED
Senior Vice President, Partner
909.545.8091
sassar@voitco.com
Lic. #01964667

Ian Ozimec, CCIM
Senior Associate
909.545.8001
iozimec@voitco.com
Lic. #02040261





TENANT AERIAL

1110 W. BASELINE ROAD, RIALTO, CA 92376

Juan Gutierrez, SIOR
 Executive Vice President, Partner
 909.545.8008
 jgutierrez@voitco.com
 Lic. #01777990

Shy Assar, MBA/MRED
 Senior Vice President, Partner
 909.545.8091
 sassar@voitco.com
 Lic. #01964667

Ian Ozimec, CCIM
 Senior Associate
 909.545.8001
 iozimec@voitco.com
 Lic. #02040261

Voit
 REAL ESTATE SERVICES