

BREA CENTRAL BUSINESS PARK

500-590 W Central Avenue, Brea, CA

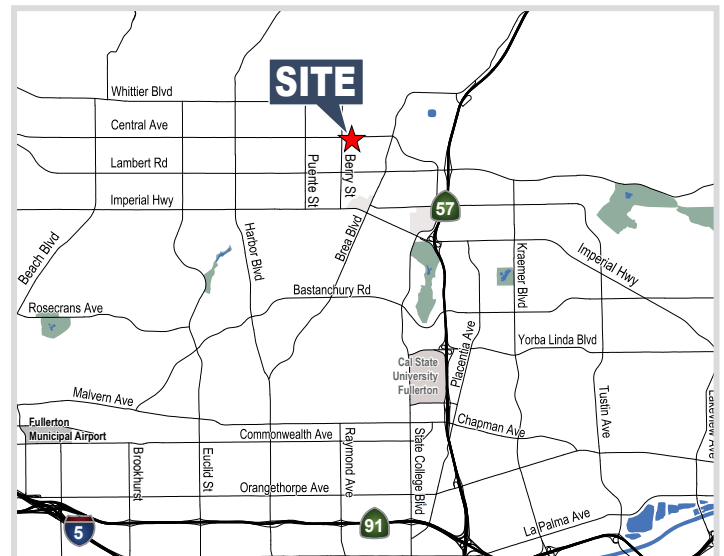
684-690 N Berry Street, Brea, CA



±2,745 SQUARE FEET INDUSTRIAL | R&D | OFFICE FOR LEASE

PROPERTY FEATURES

- Quality Business Park Environment
- Recent Building Renovations
- Light Industrial, R&D, and Office Use
- Excellent Truck Access
- 57 Freeway Access
- Close Proximity to Retail and Restaurants
- 20-80% Office Build Out
- 14' Warehouse Clearance
- Warehouse Fire Sprinklers



BARRY WALSH

Vice President | Partner

bwalsh@voitco.com

[714.935.2309](tel:714.935.2309)

Lic. #01213417

Voit

REAL ESTATE SERVICES

2400 E. Katella Avenue, Suite 750, Anaheim, CA 92806 • 714.978.7880 • 714.978.9431 Fax

Licensed as Real Estate Salespersons by the CA Bur of Real Estate. The information contained herein has been obtained from sources we deem reliable. While we have no reason to doubt its accuracy, we do not guarantee it. ©2026 Voit Real Estate Services, Inc. All Rights Reserved. License # 01991785.

www.VoitCo.com

BREA CENTRAL BUSINESS PARK

500-590 W Central Avenue & 684-590 Berry Street, Brea, CA



SITEPLAN

CENTRAL AVE



Address	Unit	Total Size SF	Lease Rate PSF	Comments
590 W Central	H	±2,745	\$1.60 MG	50% Office, 1 GL Door, Kitchenette, 2 Restrooms

\$0.15 / PSF CAM Fees

BARRY WALSH

Vice President | Partner

bwalsh@voitco.com

714.935.2309

Lic. #01213417



REAL ESTATE SERVICES

2400 E. Katella Avenue, Suite 750, Anaheim, CA 92806 • 714.978.7880 • 714.978.9431 Fax

Licensed as Real Estate Salespersons by the CA Bur of Real Estate. The information contained herein has been obtained from sources we deem reliable. While we have no reason to doubt its accuracy, we do not guarantee it. ©2026 Voit Real Estate Services, Inc. All Rights Reserved. License # 01991785.

www.VoitCo.com

BREA CENTRAL BUSINESS PARK

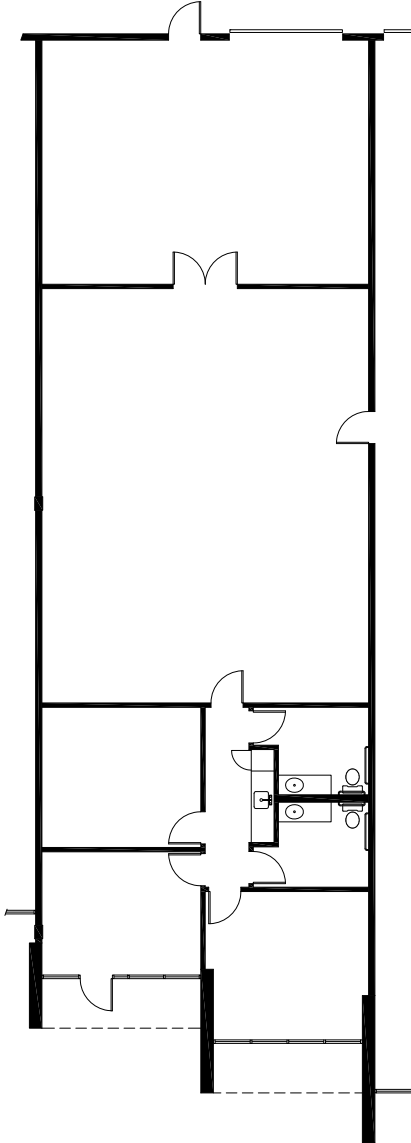
500-590 W Central Avenue & 684-590 Berry Street, Brea, CA



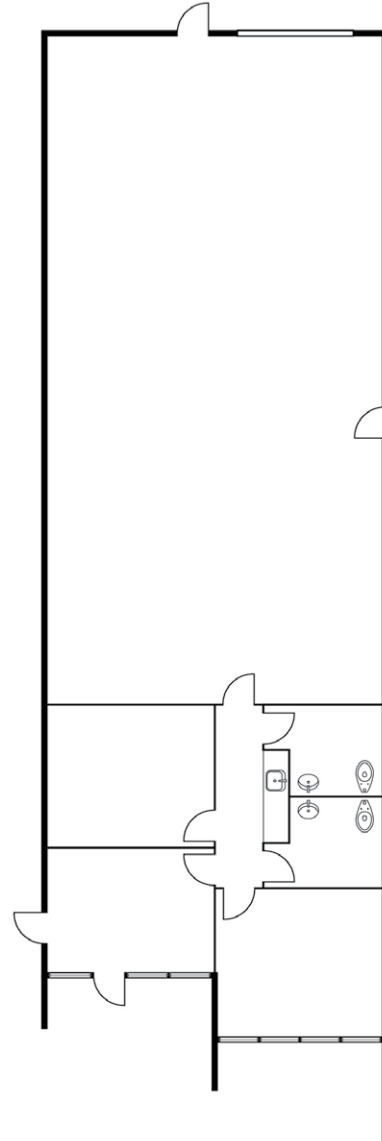
590 W Central Avenue, Unit H

CURRENT FLOOR PLAN

50% Office, 1 GL Door,
Kitchenette, 2 Restrooms



HYPOTHETICAL FLOOR PLAN



*Floor Plan Not to Scale

BARRY WALSH

Vice President | Partner

bwalsh@voitco.com

714.935.2309

Lic. #01213417

Voit

REAL ESTATE SERVICES

2400 E. Katella Avenue, Suite 750, Anaheim, CA 92806 • 714.978.7880 • 714.978.9431 Fax

Licensed as Real Estate Salespersons by the CA Bur of Real Estate. The information contained herein has been obtained from sources we deem reliable. While we have no reason to doubt its accuracy, we do not guarantee it. ©2026 Voit Real Estate Services, Inc. All Rights Reserved. License # 01991785.

www.VoitCo.com