

RETAIL/OFFICE FOR LEASE

1396 E. SANTA CLARA ST. SAN JOSE, CA 95116

900 SQ. FT.

RITCHIE Commercial
RESPONSIBLE REAL ESTATE

AVAILABLE NOW



1396 E. SANTA CLARA ST.

SAN JOSE, CA 95116

Small retail/office with great natural light, across from Five Wounds Parish, and prime access to 101

CONTACT INFORMATION



Frank Andre

(408) 282-8519

fandre@ritchiecommercial.com

LIC# 01209214



- ✓ 900 SQ FT.
- ✓ RETAIL/OFFICE
- ✓ GREAT ACCESS TO 101
- ✓ NEW FLOORING/PAINT
- ✓ NEGOTIABLE RENT
- ✓ FLEXIBLE LEASE TERM
- ✓ MOTIVATED LANDLORD

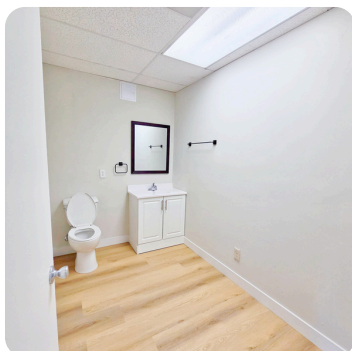
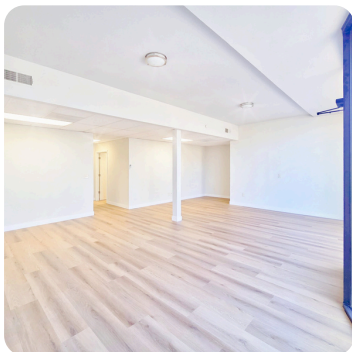
RETAIL/OFFICE FOR LEASE

1396 E. SANTA CLARA ST. SAN JOSE, CA 95116

900 SQUARE FEET

RITCHIE Commercial
RESPONSIBLE REAL ESTATE

INTERIOR



1396 E. SANTA CLARA ST.

SAN JOSE, CA 95116

Small retail/office with great natural light, across from Five Wounds Parish, and prime access to 101

CONTACT INFORMATION



Frank Andre

(408) 282-8519

frandre@ritchiecommercial.com

LIC# 01209214



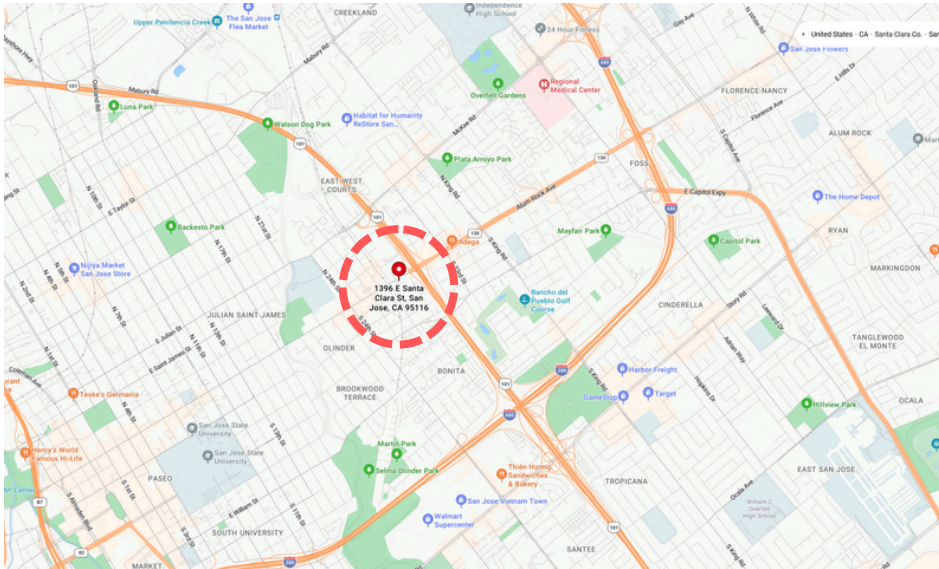
RETAIL/OFFICE FOR LEASE

1396 E. SANTA CLARA ST. SAN JOSE, CA 95116

900 SQUARE FEET

RITCHIE Commercial
RESPONSIBLE REAL ESTATE

MAP



1396 E. SANTA CLARA ST.
SAN JOSE, CA 95116

Small retail/office with great natural light, across from Five Wounds Parish, and prime access to 101

CONTACT INFORMATION



Frank Andre
(408) 282-8519
fandre@ritchiecommercial.com
LIC# 01209214

