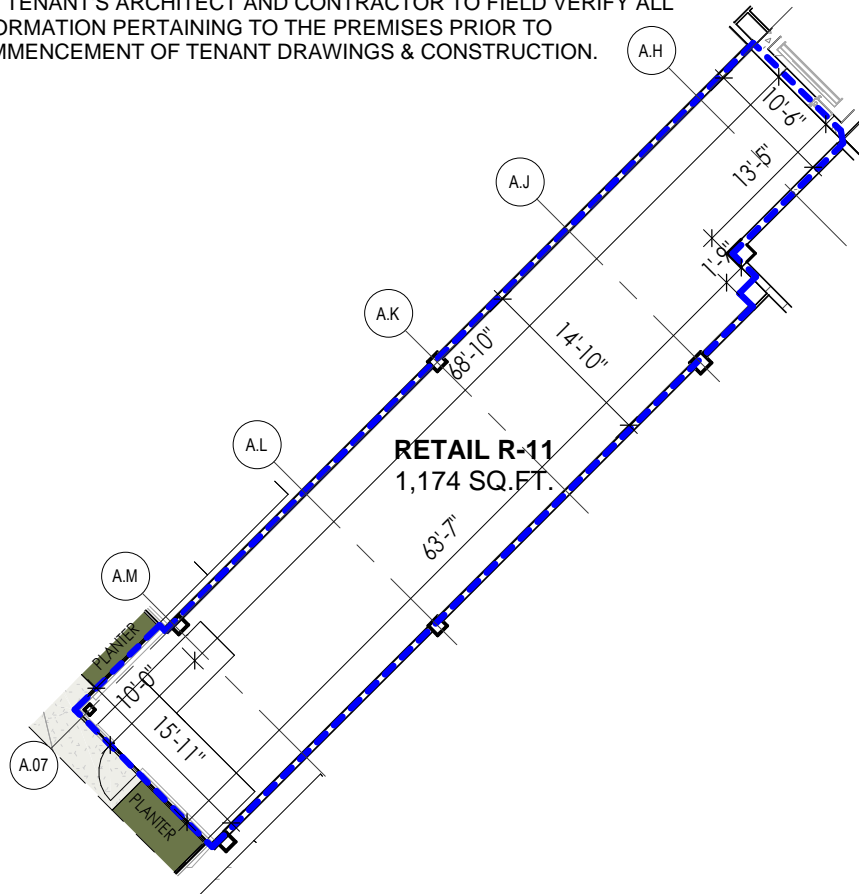


MIRAI

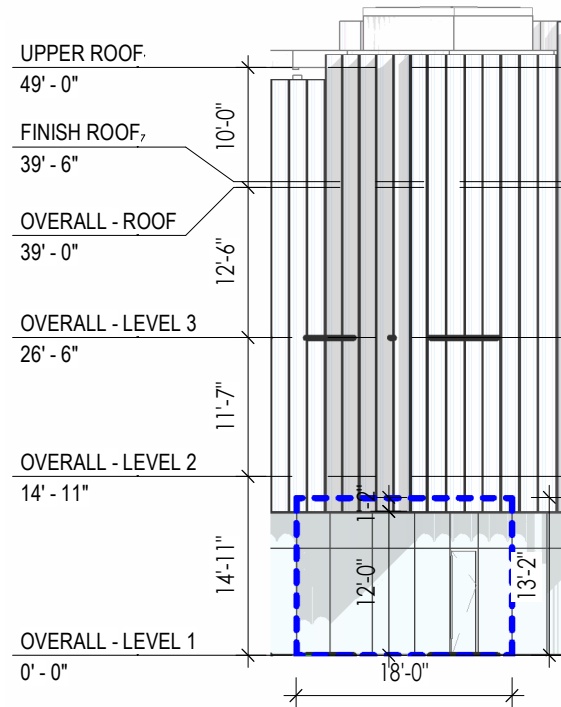
MIAMI DESIGN DISTRICT PROJECT
4200 - 4240 NE 2nd AVENUE, MIAMI, FL 33137

LOD RETAIL SPACE R-11

THE INFORMATION PROVIDED ON THE LOD IS BASED ON INFORMATION FOUND IN THE BASE BUILDING (VENDOR PACKAGE) CORRESPONDENCE OR WORKING DRAWINGS AND MAY NOT REFLECT FINAL "ON-SITE AS IS" CONDITION NOR ALL CONDITIONS THAT MAY RESULT FROM ON SITE ADJUSTMENTS DURING CONSTRUCTION. THE LOD IS NOT INTENDED TO REFLECT EVERY CONDITION WITHIN THE SPACE WITH RESPECT TO STRUCTURE & MEP ONE OFF CONDITIONS. ADDITIONALLY, SCHEMATIC DESIGN DEVELOPMENT DRAWINGS ARE SUBJECT TO CHANGE AS THE PROJECT DOCUMENTS ARE FINALIZED. IT IS THE RESPONSABILITY OF THE TENANT'S ARCHITECT AND CONTRACTOR TO FIELD VERIFY ALL INFORMATION PERTAINING TO THE PREMISES PRIOR TO COMMENCEMENT OF TENANT DRAWINGS & CONSTRUCTION.



2 RETAIL SPACE - R11 LOD
SCALE: 1/16" = 1'-0"



3 SOUTH ELEVATION - RETAIL R11 LOD
SCALE: 1/16" = 1'-0"



1 KEY PLAN
SCALE: 1" = 50'-0"