



**\*NEW RENT PROMOTION**

Year 1 - \$2.25/SF + E

Year 2 - \$2.50/SF + E

Year 3 - \$2.75/SF + E

Negotiable thereafter

\*Rent Promotion applies to a new lease, on an as-is basis, and only for Suite 300 in the 9915 building. Lease must be signed by 8/31/2026.

# MONARCH

## CORPORATE CENTER

9909 & 9915 Mira Mesa Boulevard, Scripps Ranch | San Diego, CA 92131

**CBRE**

CBRE, INC.  
Broker Lic. 00409987

**SCOTT KINCAID**

Lic. 01228565  
+1 858 546 4691  
scott.kincaid@cbre.com

**JEB BAKKE**

Lic. 00872363  
+1 858 546 4603  
jeb.bakke@cbre.com

**VICTORIA SOTO**

Lic. 02139648  
+1 858 546 2675  
victoria.soto@cbre.com

# WHY MONARCH?

Scripps Ranch's most prestigious **Class A Office** campus totaling 112,269 SF

9909 Mira Mesa Blvd - 56,227 SF

9915 Mira Mesa Blvd - 56,042 SF



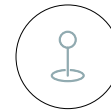
Walkable amenities



Above standard parking ratio and covered parking: 5/1000



Immediate freeway access



Onsite amenities: showers, lockers, common area, conference room and courtyard

**SCRIPPS RANCH'S MOST PRESTIGIOUS CLASS A OFFICE CAMPUS**



# AMENITIES MAP



## DRIVE TIMES

**5 MIN**

Hwy 52 & I-15  
Hwy 56 & I-15

**15 MIN**

Hwy 78 & I-15  
UCSD

**25 MIN**

Downtown San Diego  
San Diego International Airport

\*NOT SHOWN ON MAP

Miramar Lake & Recreation | Hourglass Community Park | Scripps Ranch High School

## WALKABLE AMENITIES

### **1** **COMFORT SUITES/ HOLIDAY INN EXPRESS**

### **2** **DENNY'S**

### **3** **SCRIPPS MESA VILLAGE**

Andrea Whitfall Law  
Ariana Kabob House  
Dentistry - Melinda Marino  
Escape at Tiffany Nail/Spa  
Loving Hut  
Lucky Donuts & Deli  
Martinizing Dry Cleaning  
Musical Children  
Pizza Hut  
Shozen BBQ  
Upscale Hair Gallery

### **4** **SCRIPPS MEDICAL CENTER**

Oasis Dental Arts  
Play it Again Sports  
Scripps Ranch Medical  
Clinic

### **5** **SCRIPPS HILL CENTER**

C's Ice Cream & Deli  
Don Lucio's Taco Shop II  
Filippi's Pizza Grotto  
Nail Time & Spa  
Scripps Ranch Liquor

### **6** **SCRIPPS MESA RETAIL CENTER**

Air Force Reserve  
Bead Cellar  
Bobi's Tailoring  
Brazilian Jiu Jitsu  
California Coast Credit Union  
Fame Lashes  
Farmers Insurance  
Fast Signs  
Jhig's Hair Studio  
Manila Sunset Grille  
Metro PCS  
Mongolian Hot Pot  
Neal Pham Dental  
Phat's Beauty Supply  
ShareTea  
1st American Mortgage & Realty

### **7** **SCRIPPS RANCH SHOPPING CENTER**

Black Mountain Bicycles  
Bliss Dental Arts  
Board & Brew  
Brüski Burgers and Brew  
Calibanzo Hummus & Grill  
Chuck E. Cheese's  
C2 Education  
Gilmore Orthodontics  
Grace Threading  
Gyu-Kaku Japanese BBQ Restaurant  
Hair Dynamics  
Himalayan Grill  
Insight Dermatology  
Kappa Sushi  
Karate - United Self Defence  
KoKo Fit Club  
Moon Nails & Spa  
Scripps Paediatric Dentist  
Sprint  
Super Cuts  
Trader Joe's  
Value Cleaners

## GENERAL AREA AMENITIES

### **8** **H MART SHOPPING CENTER**

Applebee's  
Daiso Japan  
Excellent Cleaners  
El Patron  
Fantastic Sams  
Go Go Sushi & Ramen  
Golden State Seafood  
GNC  
H&R Block  
H Mart  
In-N-Out Burger  
Metro PCS  
North Island Credit Union  
Paris Baguette Cafe  
Scripps Mesa Orthodontics  
Shell Gas Station  
The Fancy Fish  
The Kebab Shop  
The UPS Store  
US Bank

### **9** **MIRA MESA SQUARE**

Arco  
Big Lots  
Commercial Bank  
Jack in the Box  
Lucky Seafood  
Navy Federal Credit Union

### **10** **MIRA MESA MARKET CENTER**

Barnes & Noble  
Bath & Body Works  
Buca di Beppo  
CVS  
Daphne's California Greek  
Empire Beauty Supply & Salon  
FedEx Office  
Island's Restaurant  
Jamba Juice  
Jersey Mike's Subs

Men's Wearhouse  
Mimi's Cafe  
Mission Federal Credit  
Union  
O's American Kitchen  
Old Navy  
On The Border Mexican  
Grill  
Panera Bread  
Pick Up Stix  
Ross Dress for Less  
Rubio's Coastal Grill  
Starbucks  
Tilly's  
T-Mobile  
Verizon Wireless

### **11** **EDWARDS MIRA MESA 18 IMAX**

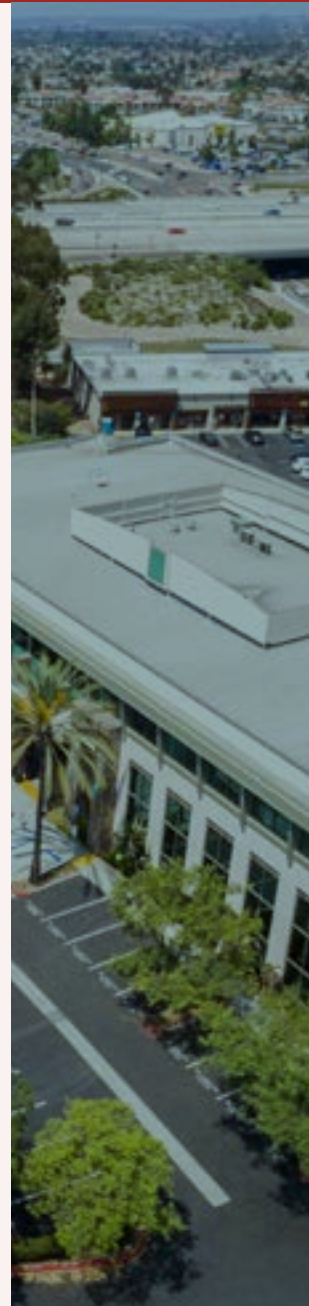
### **12** **HOME DEPOT**

### **13** **SMART & FINAL EXTRA!**

### **14** **SAN DIEGO MIRAMAR COLLEGE**

### **15** **BEST BUY**

### **16** **JEROME'S FURNITURE**



# FEATURES



Easy access from Mira Mesa Boulevard, Scripps Ranch Boulevard or Trenea Street.



New signalized intersection at the entrance to the project on Mira Mesa Boulevard.



Walk to lunch/coffee! Adjacent to SR Shopping Center with retail, dining and service amenities anchored by Trader Joe's and short walk to Mira Mesa Market Center with tenants including Islands, On the Border, Jamba Juice, Starbucks, Pick up Stix and Rubios. See amenities map for full listing.



Two-level atrium lobbies impress even the most discerning client.



Take advantage of nearby walking trails along Lake Miramar.



Showers and lockers located in each building on the ground floor.



Common area conference room available for tenants at no additional charge.



Above standard parking ratio (5/1,000), partially covered.



Centrally located in the I-15 Corridor with immediate access to Interstate 15 and Highways 52, 56 & 163.



Located along 4 major regional public transportation routes and a Park & Ride Station (20, 31, 921, 964).



Central courtyard with dining tables.






Monument signage available.



Wrap around glass exterior and low core factor allows for an abundance of natural light and efficient space.

# AVAILABILITIES

## 9909 MIRA MESA BLVD

SUITE	RSF	PRICE	AVAILABLE	FLOOR PLAN	SUITE VIDEO
<b>155</b>	2,056 SF	\$2.85/SF + Electricity	7/1/2026		
<b>230</b>	1,917 SF	\$2.85/SF + Electricity	11/1/2026		
<b>360*</b>	4,376 SF	\$2.85/SF + Electricity	Vacant		

\* Suite 360 is divisible to 1,964 SF or 2,412 SF

## 9915 MIRA MESA BLVD

**300**      7,615 SF      \$2.85/SF + Electricity      Vacant

[VIEW VIDEO](#) 

**\*NEW RENT PROMOTION**

Year 1 - \$2.25/SF + E

Year 2 - \$2.50/SF + E

Year 3 - \$2.75/SF + E

Negotiable thereafter

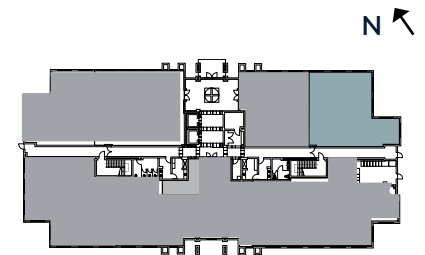
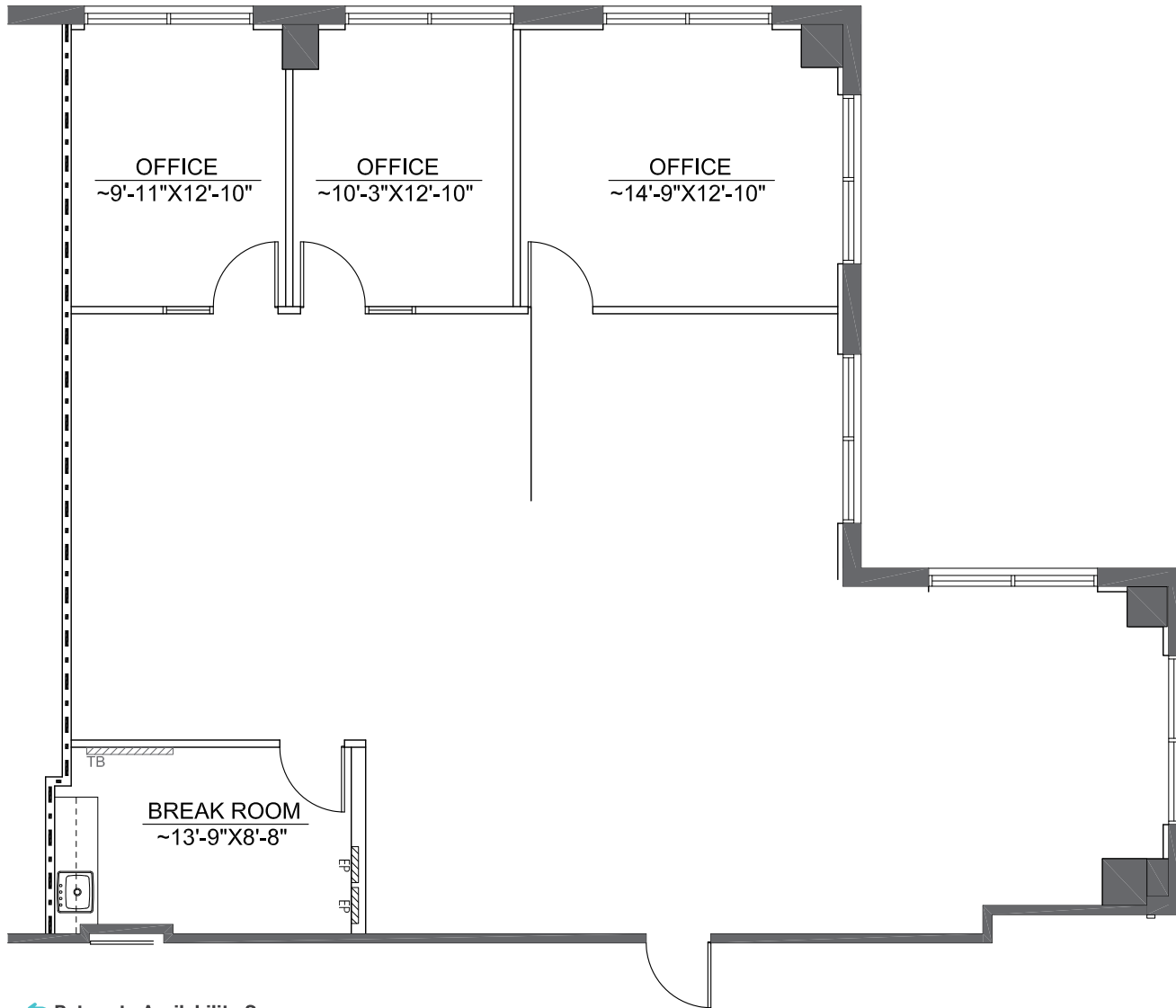
\*Rent Promotion applies to a new lease, on an as-is basis, and only for Suite 300 in the 9915 building. Lease must be signed by 8/31/2026.

# FLOOR PLANS

## 9909 MIRA MESA BLVD | SUITE 155

Suite features reception, conference room, 2 private offices, breakroom and open office area.

2,056 RSF - Available 7/1/2026



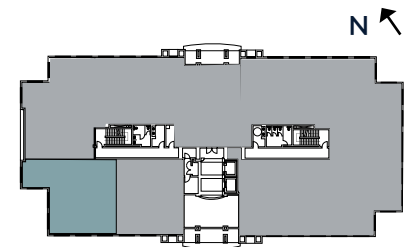
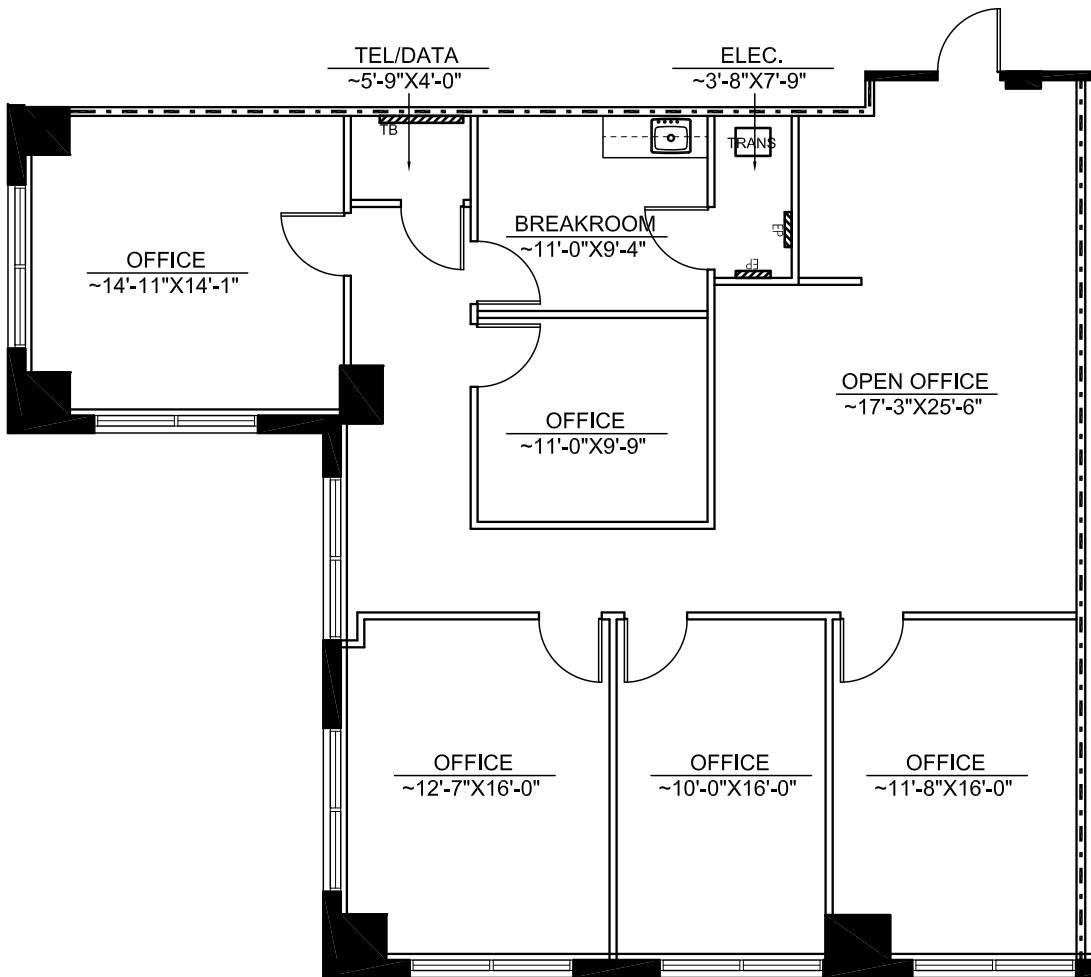
[Return to Availability Summary](#)

# FLOOR PLANS

## 9909 MIRA MESA BLVD | SUITE 230

Suite features reception, 5 private offices, breakroom, tel/data room and open office area.

1,917 RSF - Available 11/1/2026



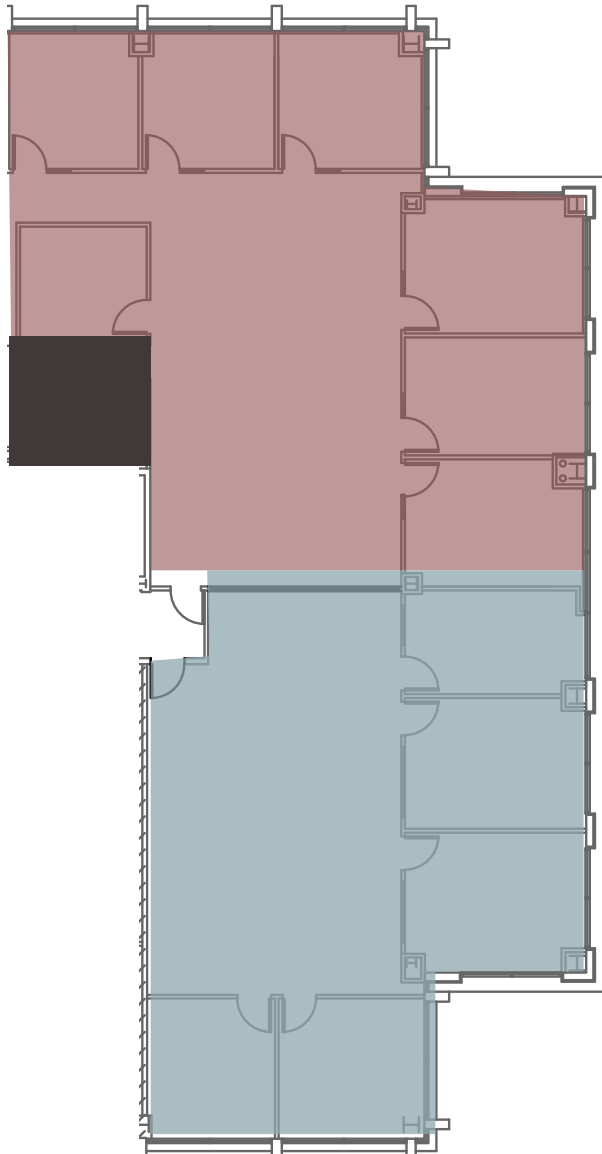
[Return to Availability Summary](#)

# FLOOR PLANS

## 9909 MIRA MESA BLVD | SUITE 360

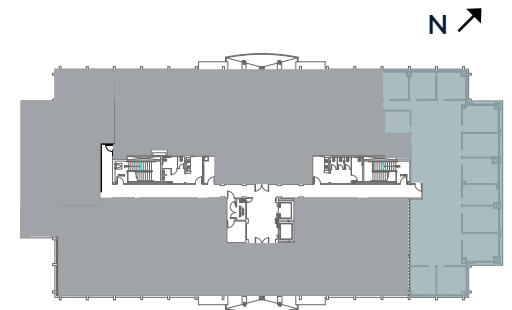
Suite features reception, 11 private offices, conference room, break room area and open office area.

4,376 RSF - Vacant  
(divisible to 2,412 SF or 1,964 SF)



 **2,412 SF**

 **1,964 SF**



[Return to Availability Summary](#)

# FLOOR PLANS

## AS-BUILT PLAN

# 9915 MIRA MESA BLVD | SUITE 300

Glass double door entry off elevator lobby, reception area, 2 conference rooms, 14 offices, copy room, IT room, storage room, open area and open break room.

7,615 RSF - Vacant

[VIEW VIDEO](#)

**\*NEW RENT PROMOTION**

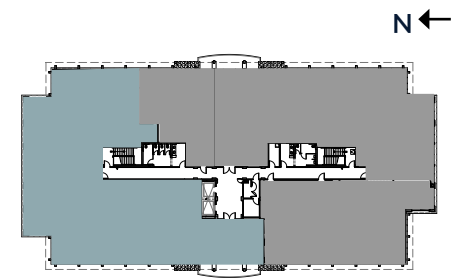
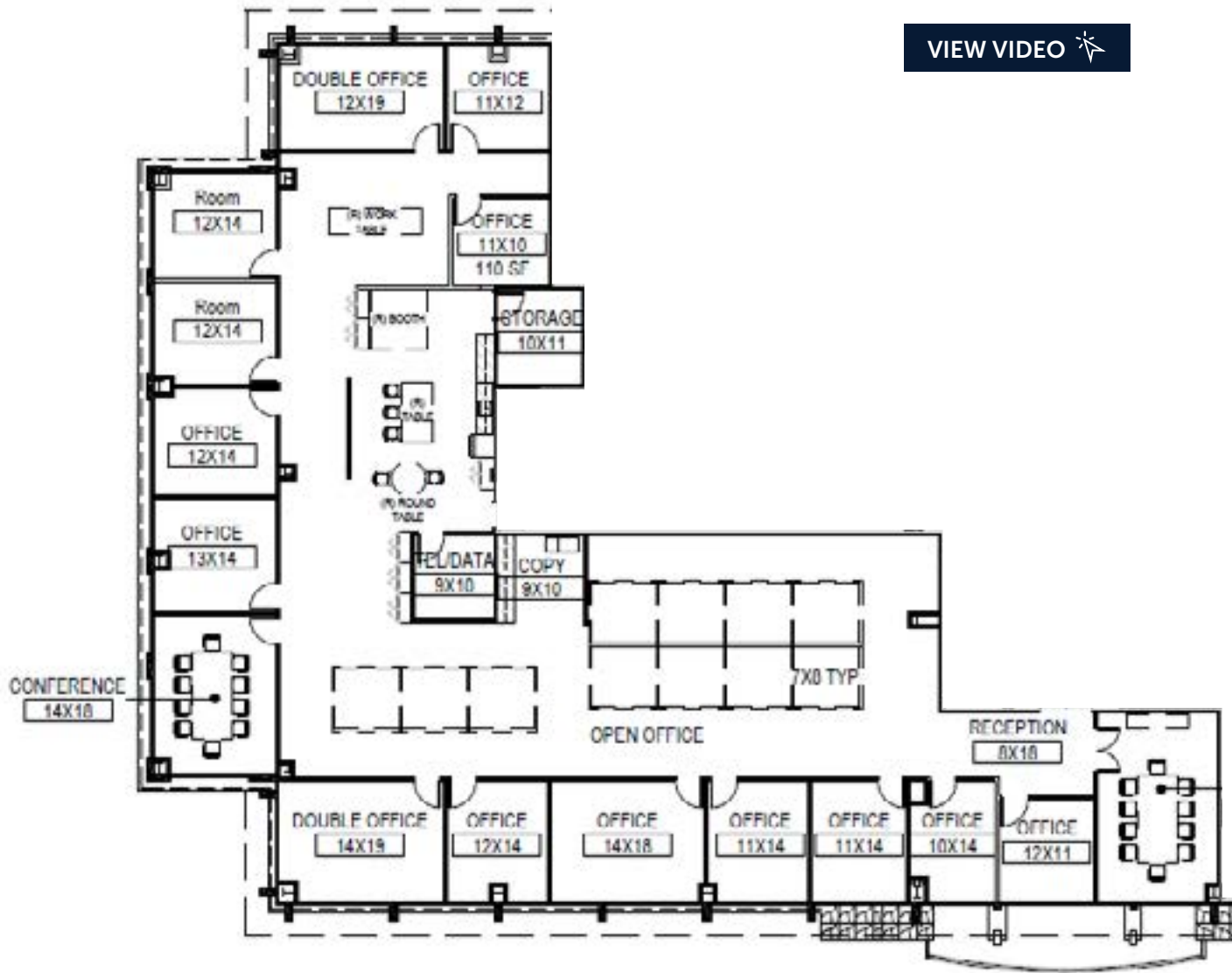
Year 1 - \$2.25/SF + E

Year 2 - \$2.50/SF + E

Year 3 - \$2.75/SF + E

Negotiable thereafter

\*Rent Promotion applies to a new lease, on an as-is basis, and only for Suite 300 in the 9915 building. Lease must be signed by 8/31/2026.

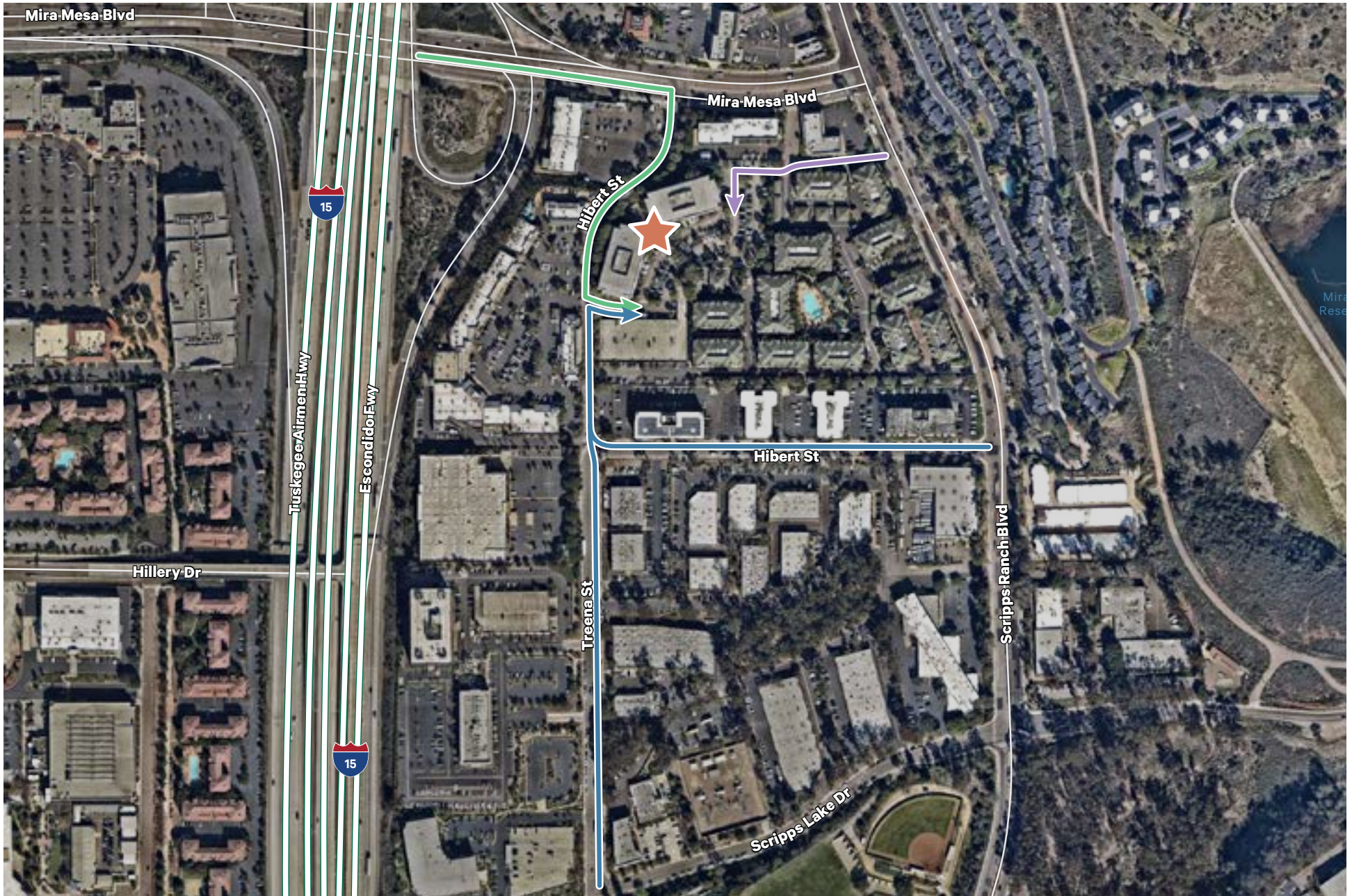


[Return to Availability Summary](#)





# PROPERTY ACCESS



# MONARCH

## CORPORATE CENTER

9909 & 9915 Mira Mesa Boulevard, Scripps Ranch | San Diego, CA 92131



**CBRE**

CBRE, INC.  
Broker Lic. 00409987

**SCOTT KINCAID**  
Lic. 01228565  
+1 858 546 4691  
scott.kincaid@cbre.com

**JEB BAKKE**  
Lic. 00872363  
+1 858 546 4603  
jeb.bakke@cbre.com

**VICTORIA SOTO**  
Lic. 02139648  
+1 858 546 2675  
victoria.soto@cbre.com

© 2026 CBRE, Inc. All rights reserved. This information has been obtained from sources believed reliable, but has not been verified for accuracy or completeness. You should conduct a careful, independent investigation of the property and verify all information. Any reliance on this information is solely at your own risk. CBRE and the CBRE logo are service marks of CBRE, Inc. All other marks displayed on this document are the property of their respective owners, and the use of such logos does not imply any affiliation with or endorsement of CBRE. Photos herein are the property of their respective owners. Use of these images without the express written consent of the owner is prohibited.