

# ARG

For Lease



# 346 Grand St

Dual Level Retail Space For Lease In Williamsburg

3,400 sq ft | 346 Grand St | Brooklyn, NY 11211



# PROPERTY DETAILS



## OVERVIEW

- **Address:** 346 Grand St, Brooklyn, NY 11211
- **Cross Streets:** Havemeyer and Marcy Ave
- **Neighborhood:** Williamsburg

## SPACE DETAILS

- **Size:** 3,400 sq ft
- **Ceiling Height:** 12 ft
- **Frontage:** 50 ft

## HIGHLIGHTS

- Dual level retail with double frontage
- Lower Level perfect for office/storage
- HVAC in place
- ADA restrooms in place
- High Ceilings

## TRANSPORTATION

- 🚌 5 min walk to B24, Q59
- 🚇 6 min walk to train J, M, Z
- 📍 15 min drive to LGA, 25 min drive to JFK, 35 min drive to EWR

## DEMOGRAPHICS

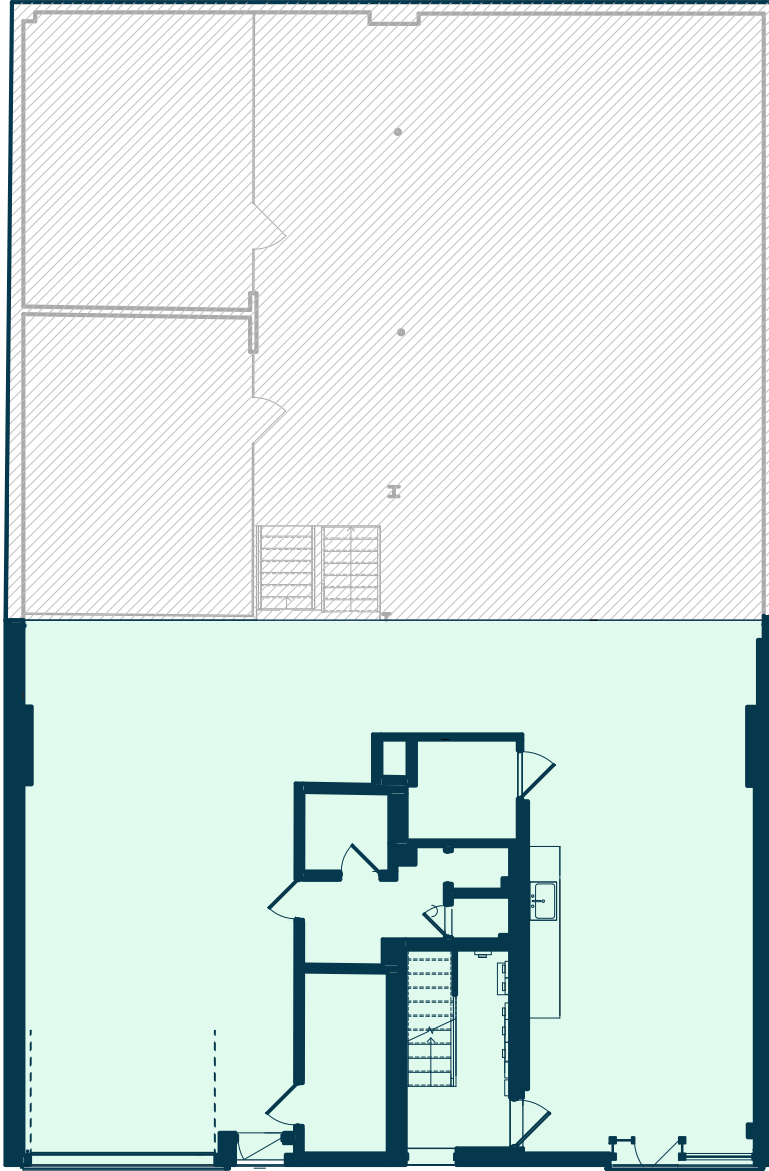
- **Population:** 178,282
- **Median Household Income:** \$84,337
- **Median Home Value:** \$1,020,140

## NEIGHBORS

Leo, Fred's Dog House, Iwak Sushi + Kitchen, Casa Andrea, Recess Grove, Echo Lake, Recette, About Glamour, The Collectors Bar, Twenty Sided, I Cavallini, The Four Horsemen, F45 Training Williamsburg North, Maracuja, Midway, De Mole Brooklyn, Tabú – Williamsburg, PPL, CTown Supermarkets, Tabare Williamsburg, Clem's, Starbucks, Sweetgreen, Blue Bottle Coffee, Think Coffee, Oslo Coffee Roasters, Checkers, Capital One Bank

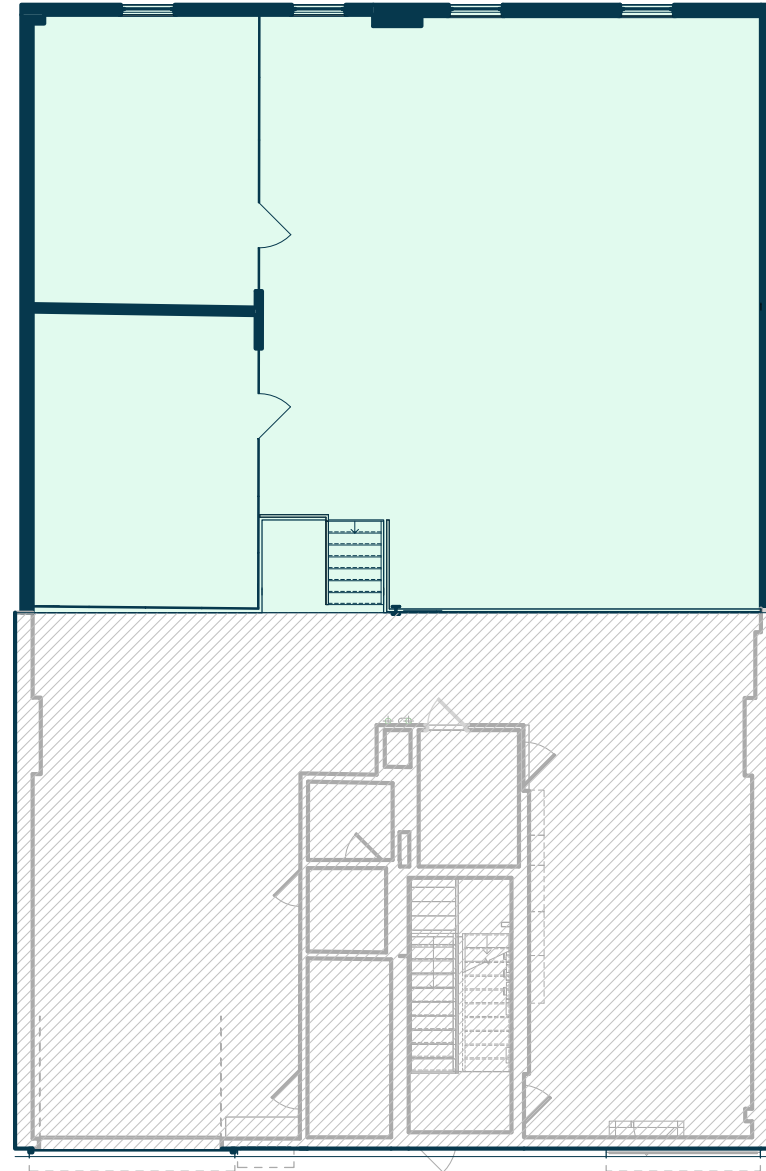
# FLOOR PLANS

LOWER FIRST FLOOR



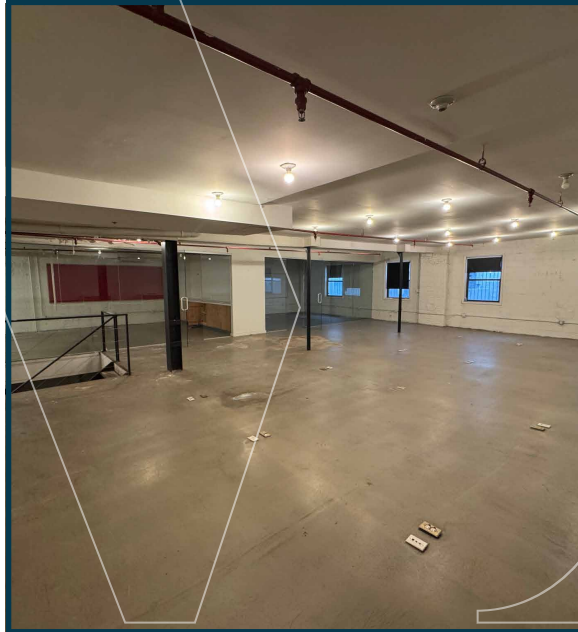
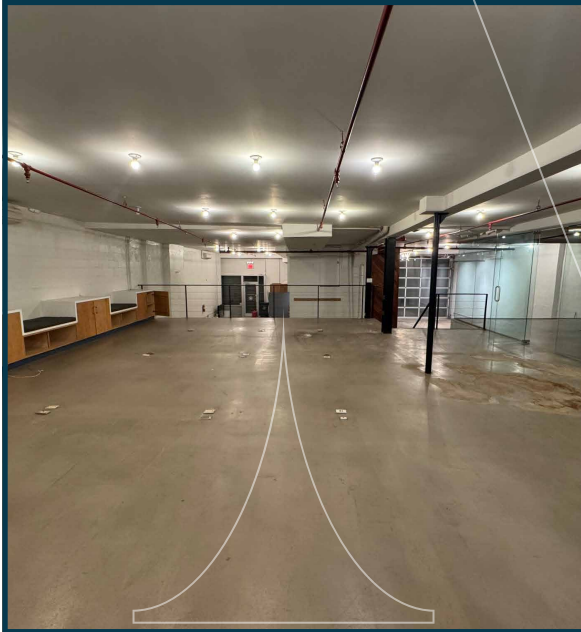
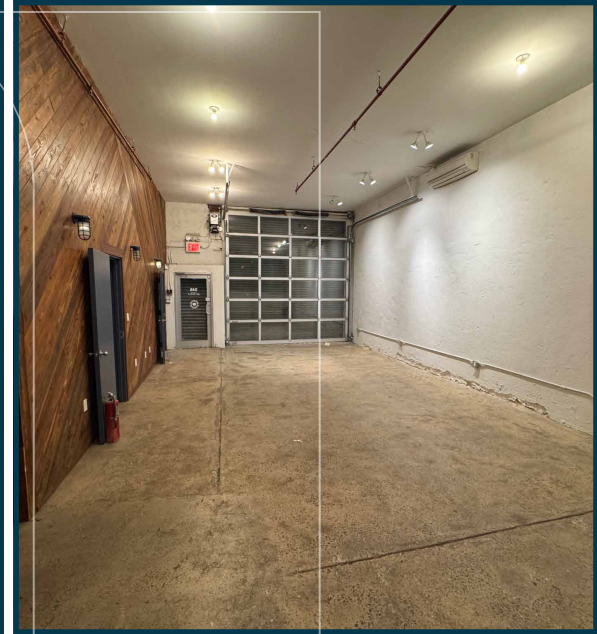
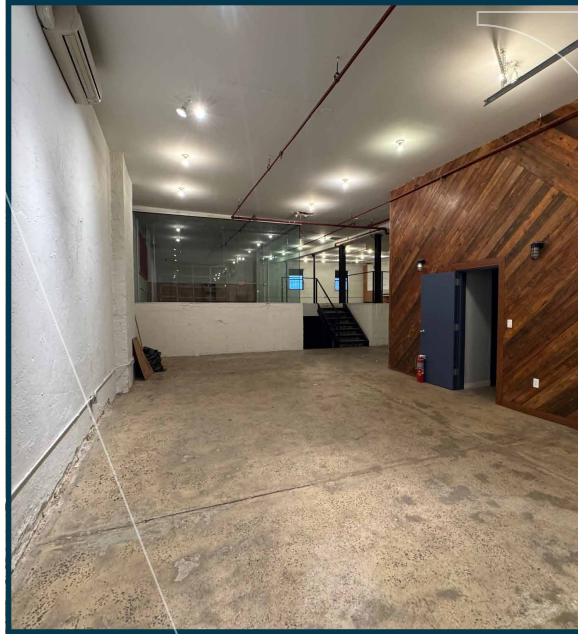
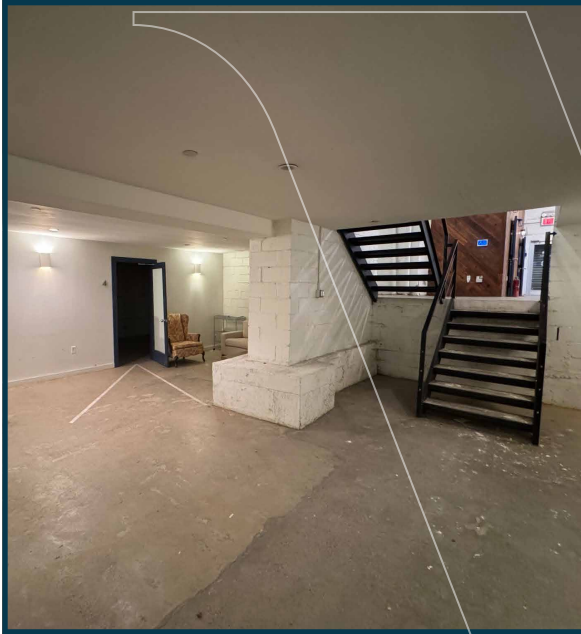
GRAND STREET

UPPER FIRST FLOOR



GRAND STREET

# INTERIOR PHOTOS



Dual Level Retail Space In Williamsburg For Lease

# MRG

# 346 Grand St Brooklyn, NY 11211

FOR MORE INFORMATION  
PLEASE CONTACT:

**EDDIE KEDA**

212-314-4684 Ext. 104

Eddie@mrgny.com

