

RETAIL FOR LEASE

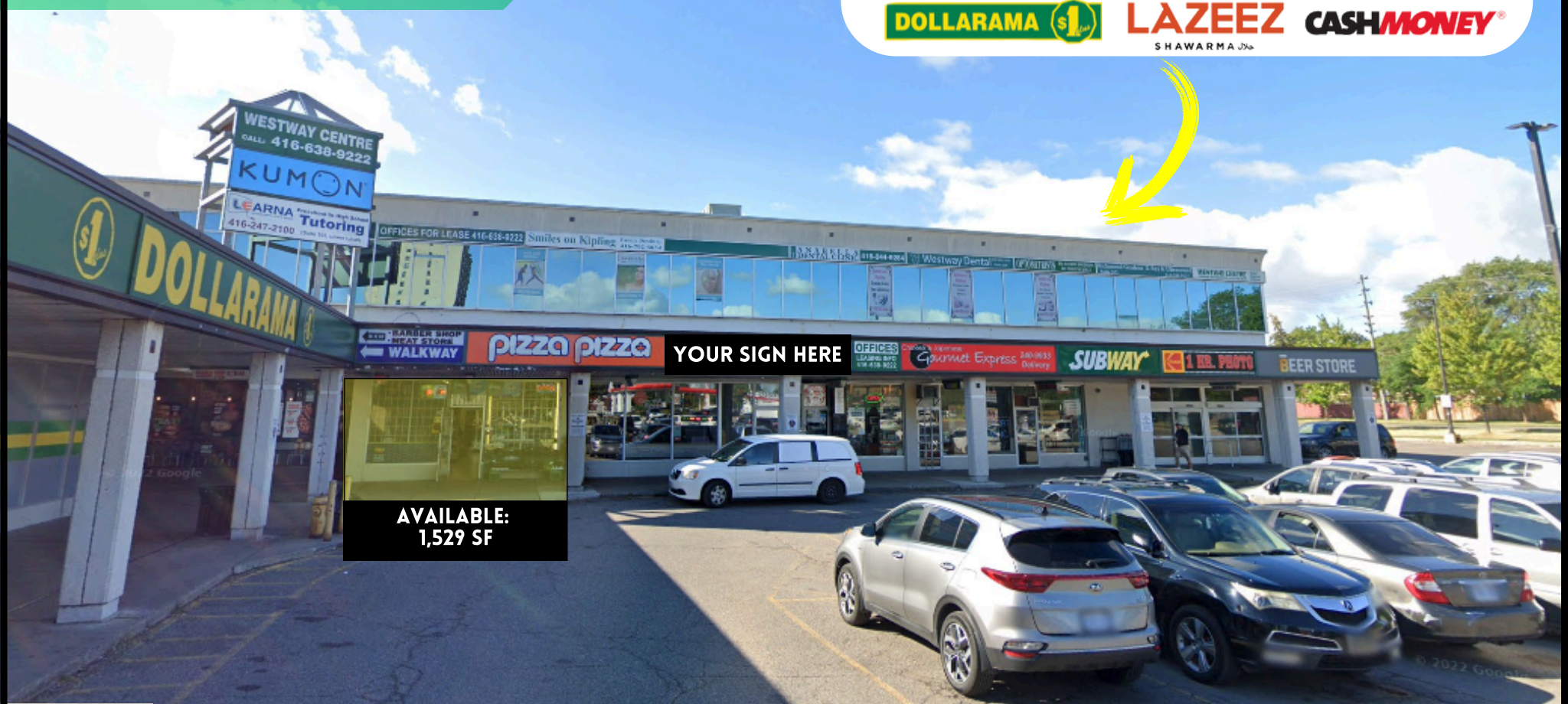
WESTWAY PLAZA

1735 KIPLING AVENUE

UNIT #9, TORONTO, ON



KIPLING AVE. & DIXON RD



AVAILABLE:
1,529 SF

PROPERTY HIGHLIGHTS

Welcome to **Westway Plaza**, a high traffic retail plaza that is stacked with national retailers and is located in a high-density residential neighborhood at the busy intersection of Kipling Ave. & Dixon Rd., in Toronto, ON.

Currently, we have a **1,529 SF** inline retail unit available **For Lease** which is being currently occupied by a convenience store.

This well established retail plaza is anchored with Shoppers Drug Mart, McDonald's, and Dollarama and is surrounded by residential homes, apartments and residential condos.

The retail plaza has an excellent mix of retailers that include a bank, a pharmacy, a dollar store, a nail shop and various QSR's and many other retailers.

Partial Tenant Roster Includes:

Shoppers Drug Mart, McDonald's, Subway, Lazeez Shawarma, Pizza Pizza, Cash Money, Cleaners, TD Bank

KEY HIGHLIGHT

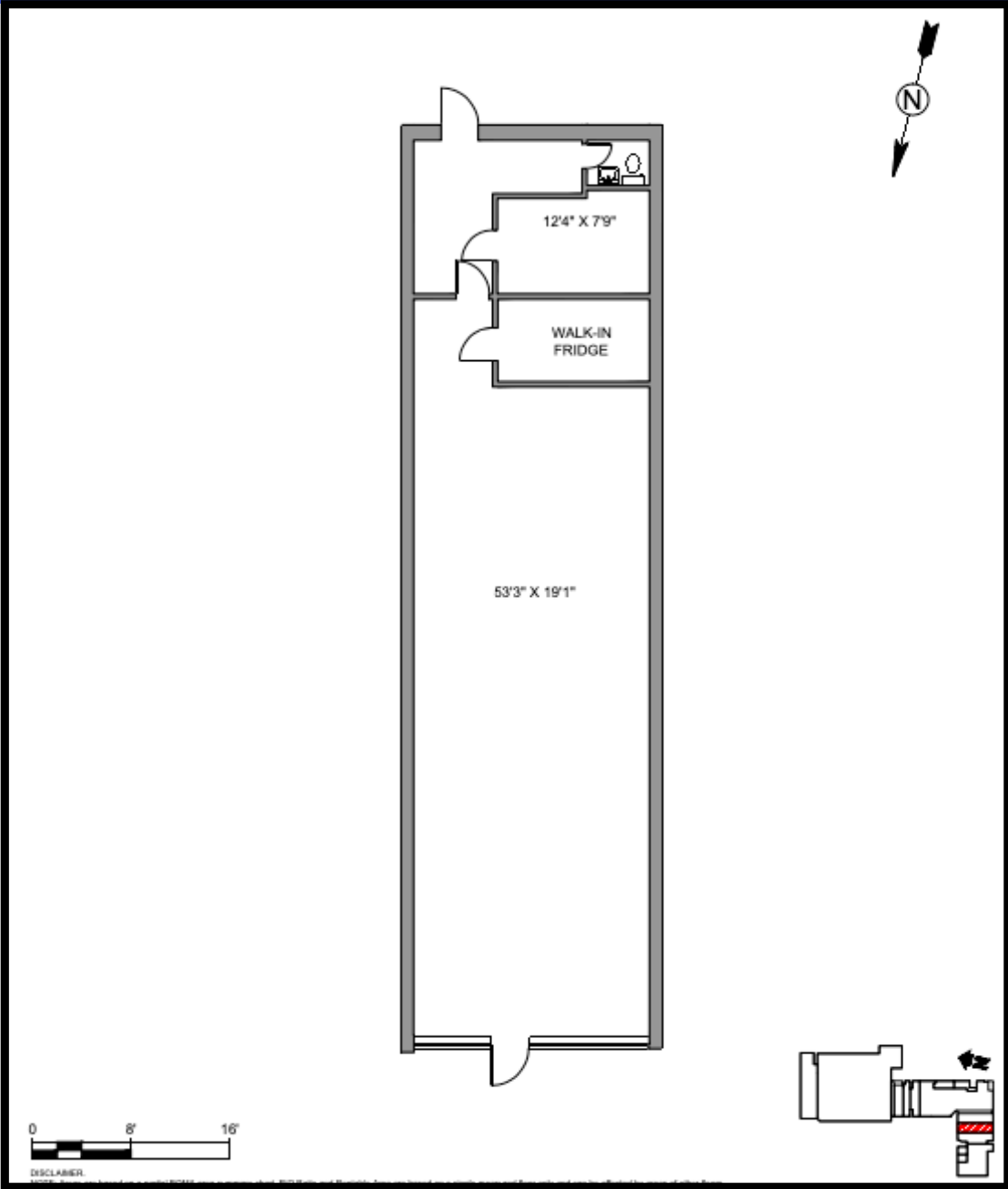
- Minutes away from Westway Junior Public School
- Minutes away from Kipling Collegiate Institute
- Minutes away from Dixon Grove Junior Middle School
- Minutes away from Highway 401

RETAIL UNIT(S) FOR LEASE:

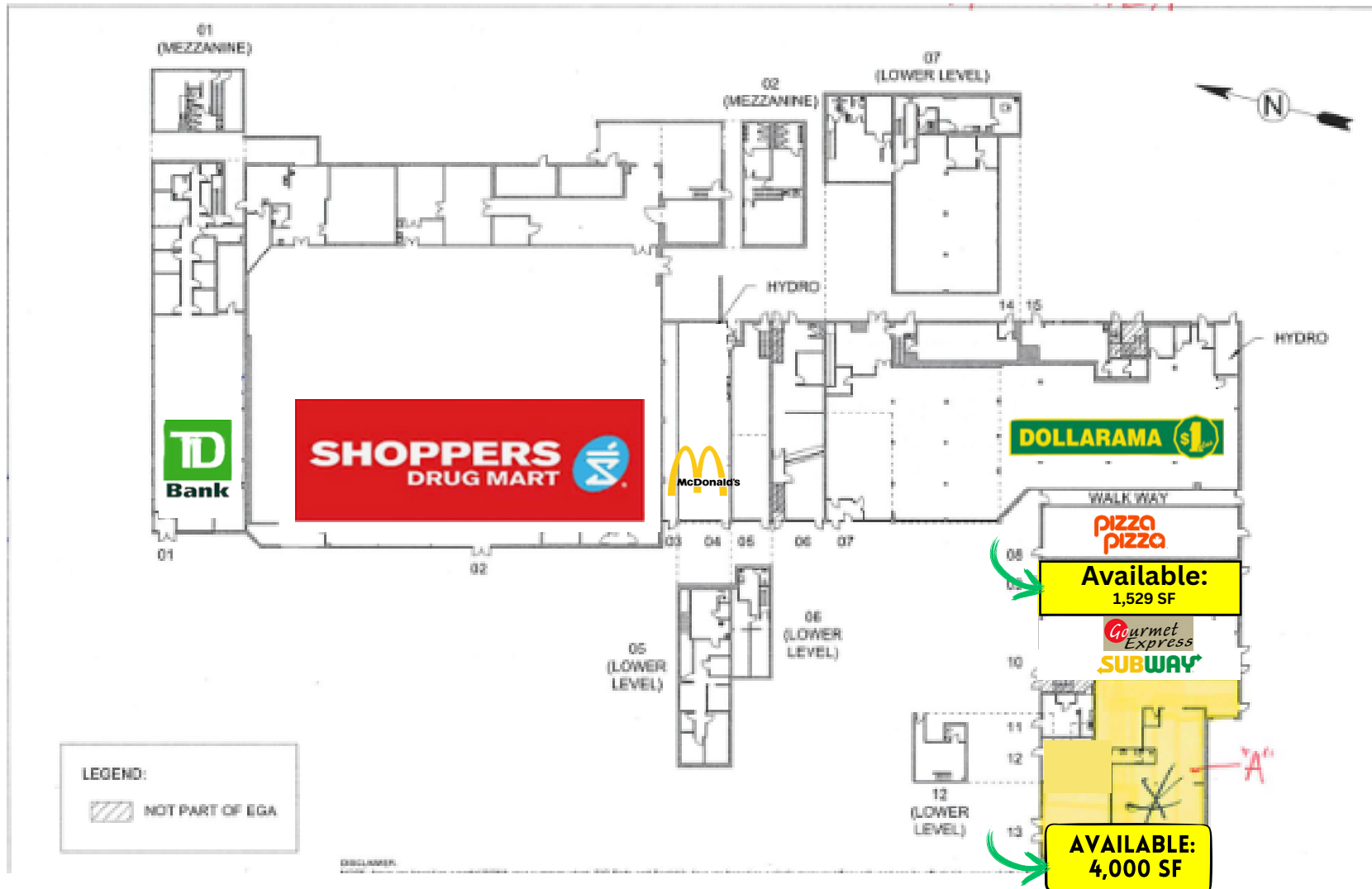
- 1,529 SF (Inline)
- **Available:** ~30 Days
- **Net Rent:** Call Broker
- **T.M.I.:** \$18.00 per SF/ Annum (2025)



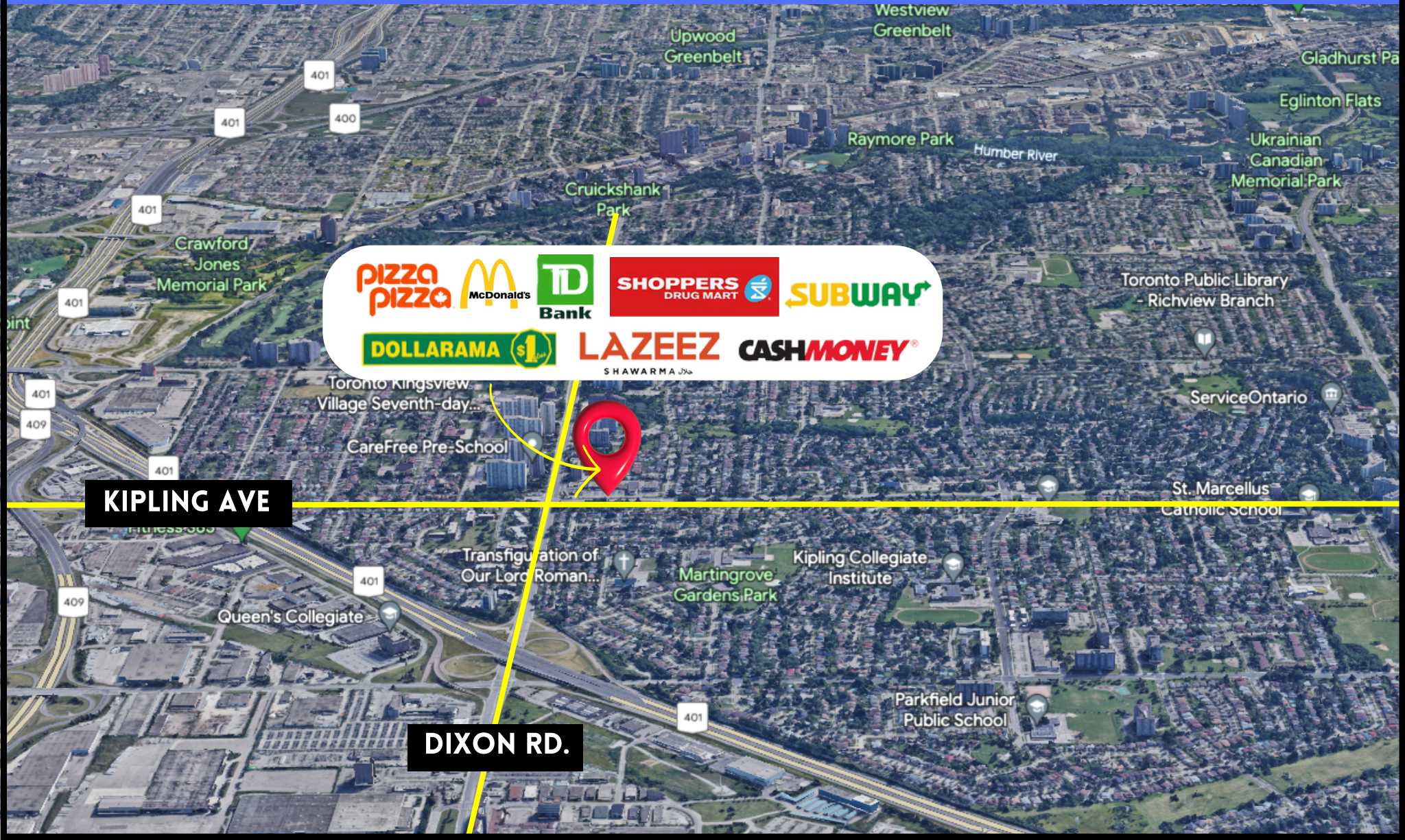
FLOOR PLAN: 1,529 SF



SITE PLAN



SITE MAP



PIZZA PIZZA **McDonald's** **TD Bank** **SHOPPERS DRUG MART** **SUBWAY**
DOLLARAMA **LAZEEZ** **CASH MONEY**
S HAWARMA

KIPLING AVE

DIXON RD.

Crawford Jones Memorial Park

Cruikshank Park

Upwood Greenbelt

Westview Greenbelt

Raymore Park

Eglinton Flats

Ukrainian Canadian Memorial Park

Toronto Public Library - Richview Branch

Toronto Kingsview Village Seventh-day...

CareFree Pre-School

ServiceOntario

St. Marcellus Catholic School

Transfiguration of Our Lord Roman...

Martingrove Gardens Park

Kipling Collegiate Institute

Queen's Collegiate

Parkfield Junior Public School

RETAIL FOR LEASE

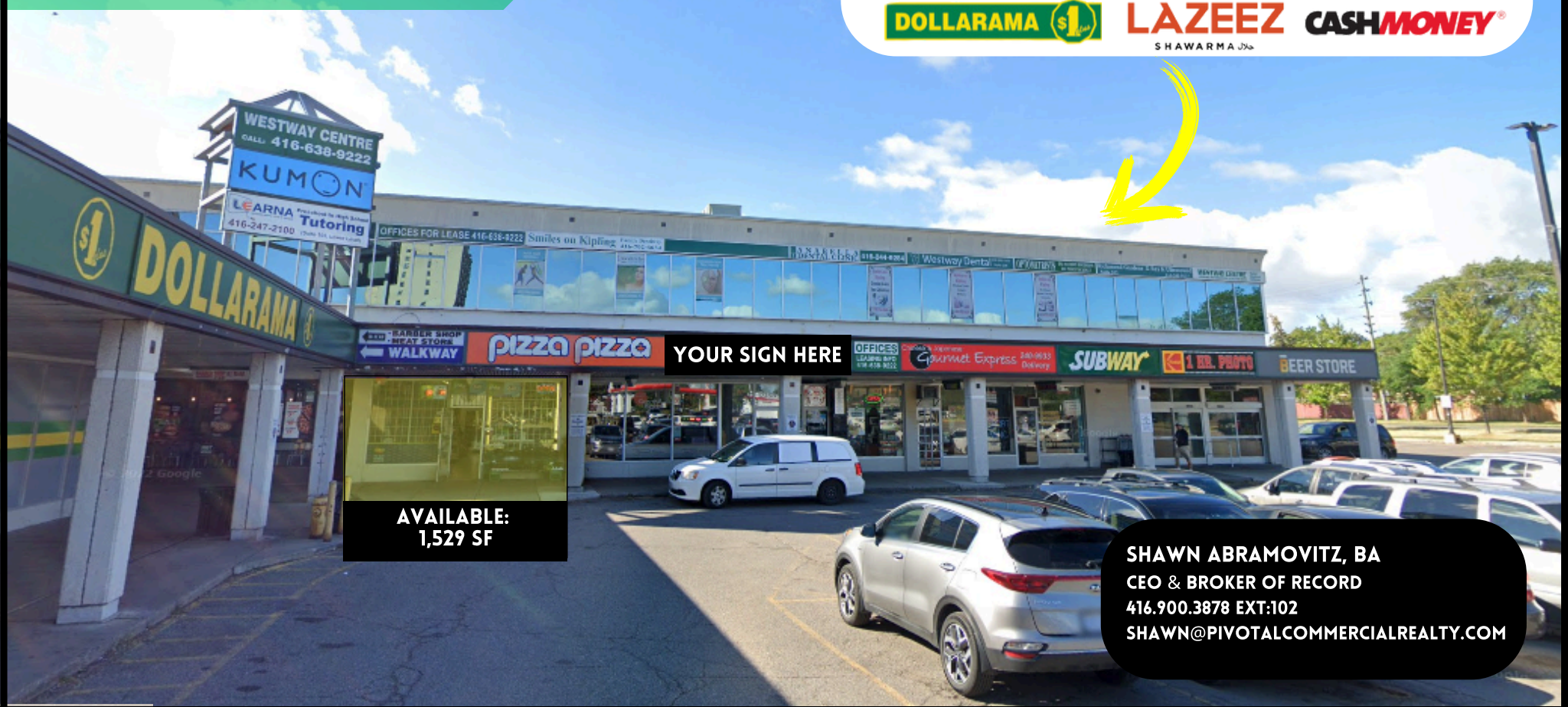
WESTWAY PLAZA

1735 KIPLING AVENUE

UNIT #9, TORONTO, ON



KIPLING AVE. & DIXON RD



AVAILABLE:
1,529 SF

SHAWN ABRAMOVITZ, BA
CEO & BROKER OF RECORD
416.900.3878 EXT:102
SHAWN@PIVOTALCOMMERCIALREALTY.COM